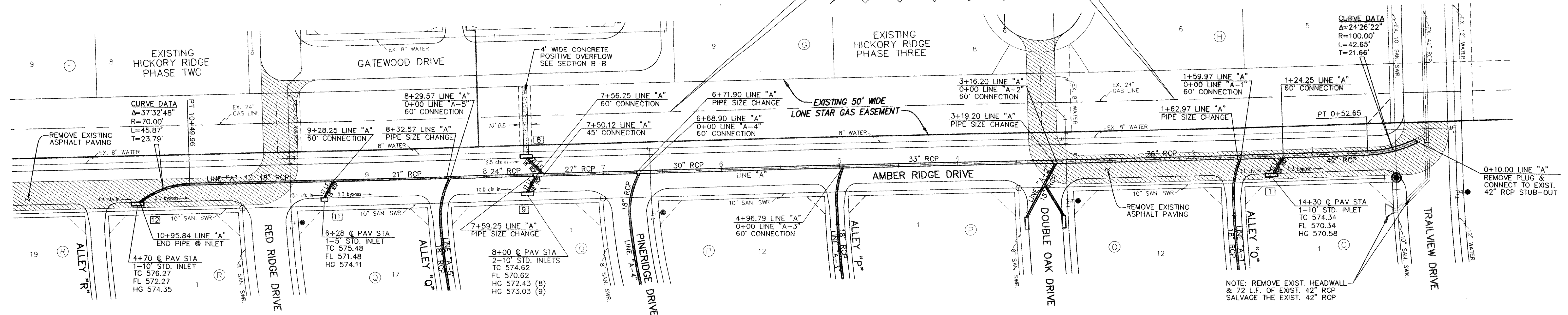


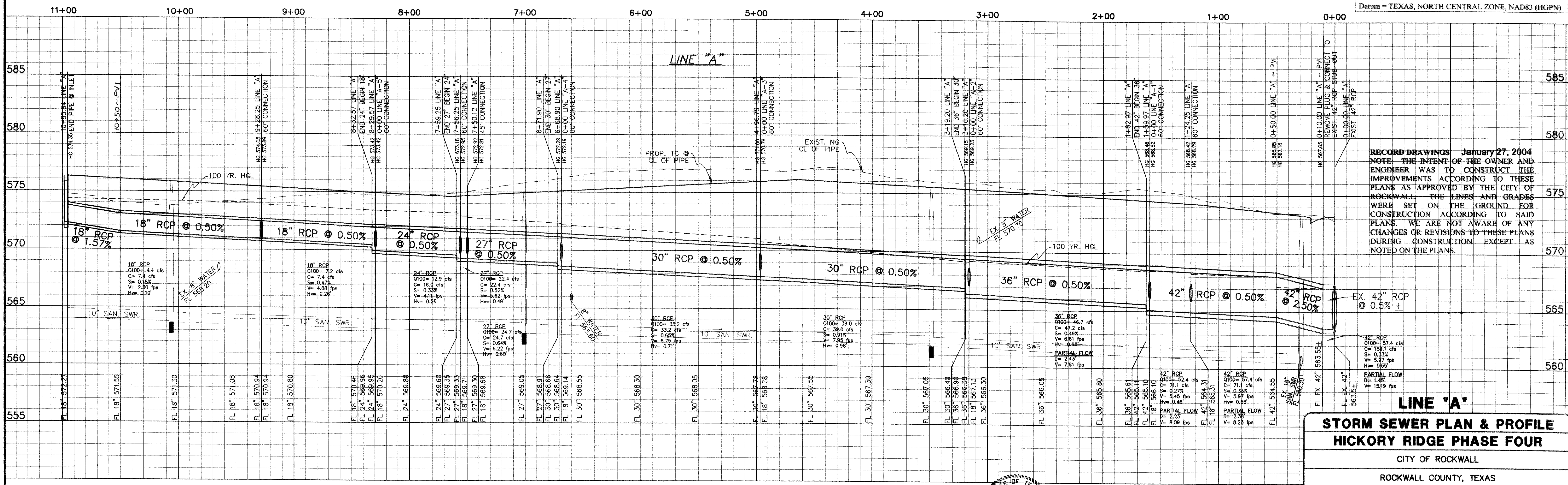
**CAUTION!**  
EXISTING GAS LINE IN THIS AREA. CONTRACTOR TO CALL TXU PIPELINE SERVICES AT 972-679-7219 AT LEAST 72 HOURS PRIOR TO CONSTRUCTION TO VERIFY LOCATION & ELEVATION.



**CURVE DATA**  
Δ=24°26'22"  
R=100.00'  
L=42.65'  
T=21.66'

NOTE: REMOVE EXIST. HEADWALL & 72 LF. OF EXIST. 42" RCP SALVAGE THE EXIST. 42" RCP

**CITY OF ROCKWALL MONUMENT**  
Paving Station 14 + 30 - East Side of Amber Ridge Drive  
3" Brass Disk on Southwest Corner of Curb Inlet  
State Plane Coordinates:  
Northing = 7,016,362.410  
Easting = 2,602,623.350  
Elevation = 574.80'  
Datum = TEXAS, NORTH CENTRAL ZONE, NAD83 (HGPN)



**RECORD DRAWINGS** January 27, 2004  
NOTE: THE INTENT OF THE OWNER AND ENGINEER WAS TO CONSTRUCT THE IMPROVEMENTS ACCORDING TO THESE PLANS AS APPROVED BY THE CITY OF ROCKWALL. THE LINES AND GRADES WERE SET ON THE GROUND FOR CONSTRUCTION ACCORDING TO SAID PLANS. WE ARE NOT AWARE OF ANY CHANGES OR REVISIONS TO THESE PLANS DURING CONSTRUCTION EXCEPT AS NOTED ON THE PLANS.

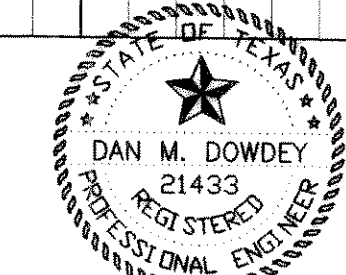
**STORM SEWER PLAN & PROFILE**  
**HICKORY RIDGE PHASE FOUR**  
CITY OF ROCKWALL  
ROCKWALL COUNTY, TEXAS

BENCHMARK:  
SQUARE CUT ON TOP OF HEADWALL AT THE MOST NORTHERLY CORNER OF BRIDGE, NORTHEASTERLY SIDE OF FM 205. 1680' NORTHWEST OF CL OF MIMS ROAD. ELEV = 529.11

BENCHMARK:  
CITY OF ROCKWALL, TEXAS CONTROL MONUMENT #929. TOP OF HEADWALL IN NORTHWEST CORNER OF BRIDGE OVER SQUABBLE CREEK. SOUTHWESTERLY SIDE OF FM 205. ELEV = 524.55

These construction plans were prepared under the responsible supervision of Dan M. Dowdey, Registered Professional Engineer No. 21433

*Dan M. Dowdey* 12/3/03



NO.	DATE	BY	REVISION
1	3-3-03	JDS	CITY MARKUPS
2	3-14-03	JDS	CITY MARKUPS

**DOWDEY, ANDERSON & ASSOCIATES, INC.**  
5225 VILLAGE CREEK DR., STE. 200 (972) 931-0694 PLANO, TEXAS

DESIGN	DRAWN	CHECKED	DATE	SCALE	JOB	SHEET
JDS	JDS	MSD	DEC. 2001	H: 1"=40' V: 1"=4'	99-066	1/12