

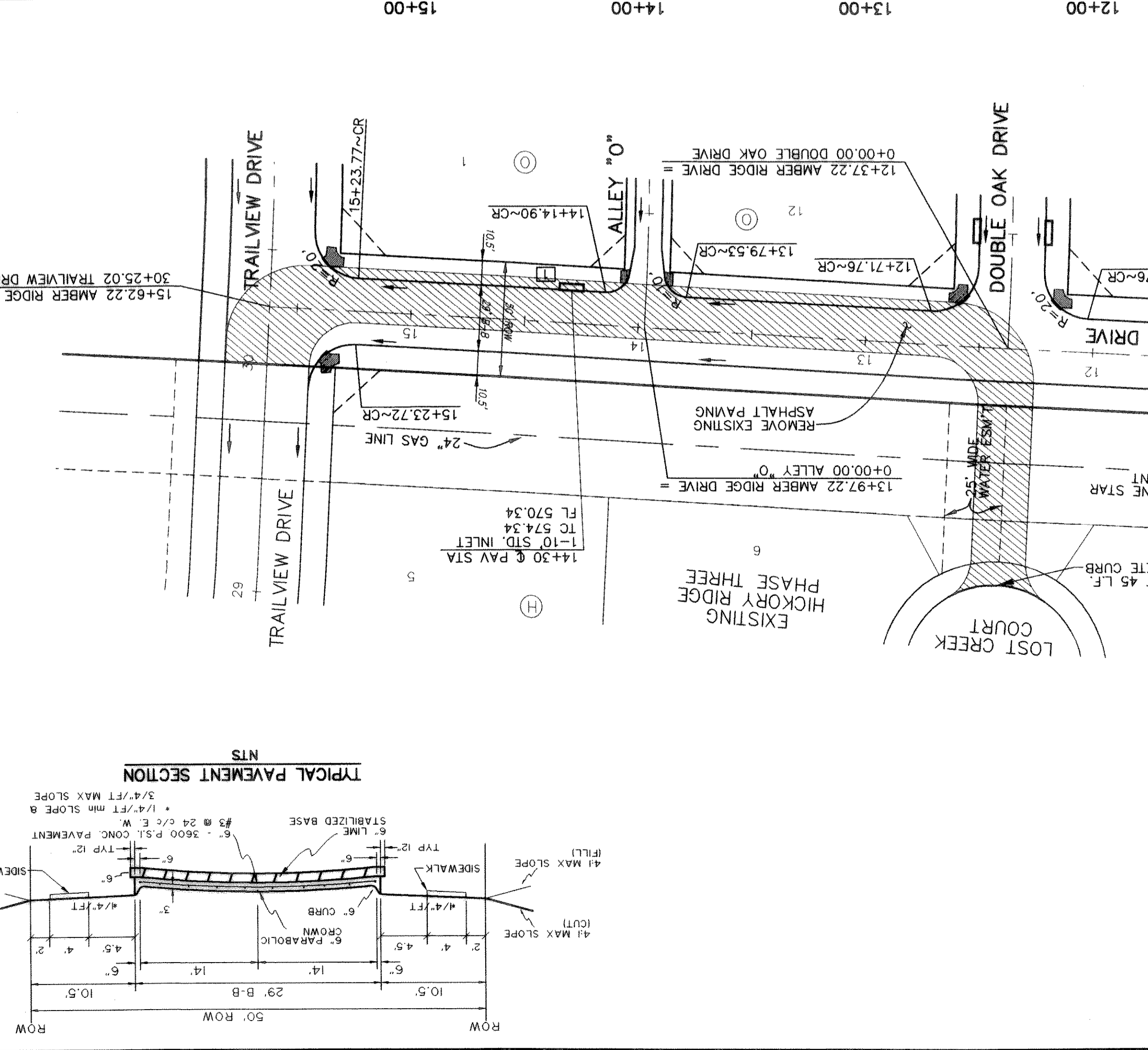
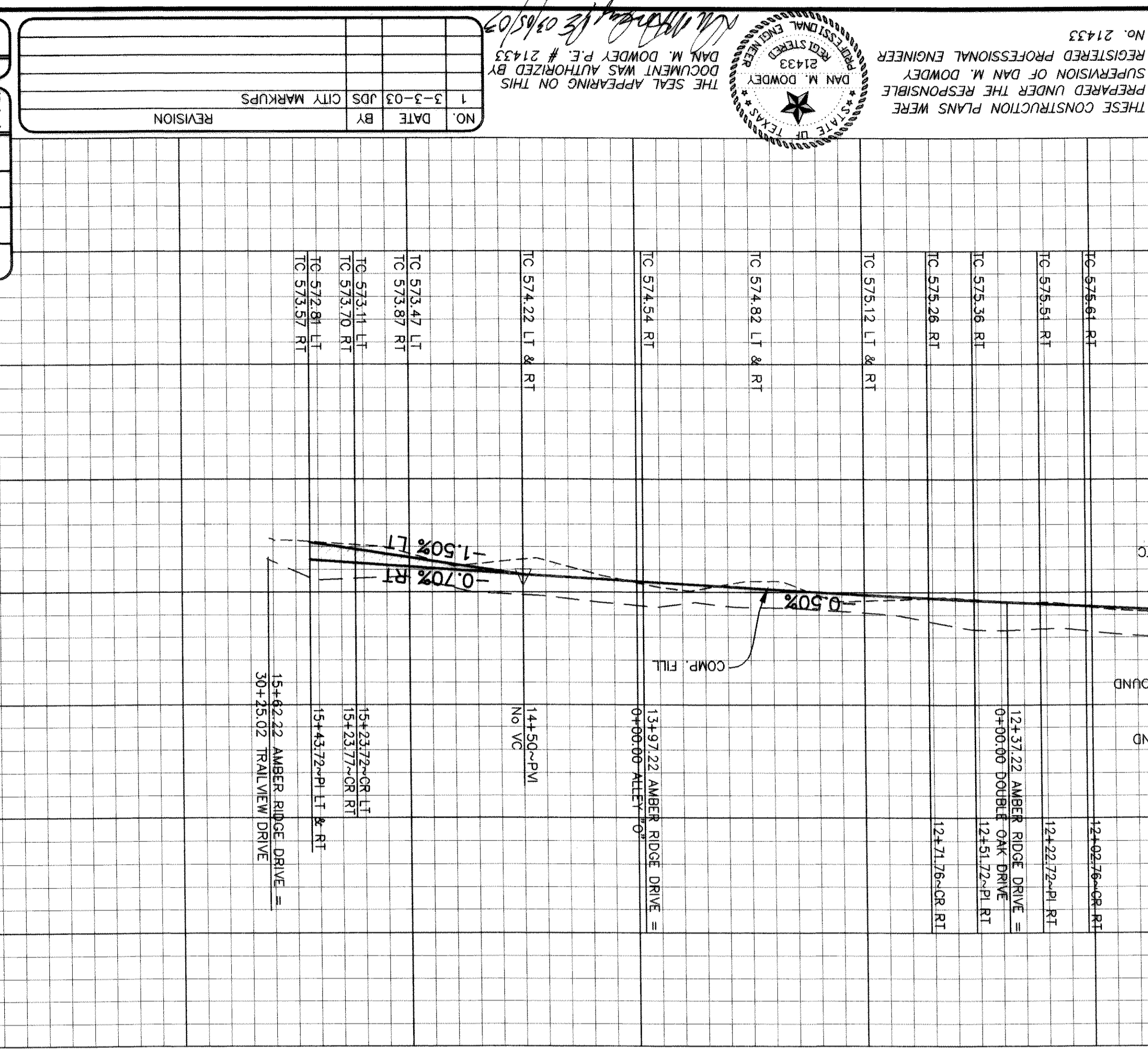
DESIGN	DRAWN	CHECKED	DATE	SCALE	JOB	SHEET
JDS	JDS	MSD	OCT 2002	1"=40'	99-066	9
DOMDEY, ANDERSON & ASSOCIATES, INC. 5225 VILLAGE CREEK DR., STE. 200 (972) 931-0884 PLANO, TEXAS						

ROCKWALL COUNTY, TEXAS
 CITY OF ROCKWALL
HICKORY RIDGE PHASE FOUR
PAVING PLAN & PROFILE
AMBER RIDGE DRIVE
STA 8+50 TO END

NO.	DATE	BY	JOS	CITY MARKUPS	REVISION
1	3-3-03	JDS			

RECORD DRAWINGS January 27, 2004
 NOTE: THE INTENT OF THE OWNER AND ENGINEER WAS TO CONSTRUCT THE IMPROVEMENTS ACCORDING TO THESE PLANS AS APPROVED BY THE CITY OF ROCKWALL. THE LINES AND GRADES WERE SET ON THE GROUND FOR CONSTRUCTION ACCORDING TO SAID PLANS. WE ARE NOT AWARE OF ANY CHANGES OR REVISION TO THESE PLANS DURING CONSTRUCTION EXCEPT AS NOTED ON THE PLANS.

TC 574.88 RT	TC 574.97 RT	TC 575.12 RT	TC 575.22 RT	TC 575.37 LT & RT	TC 575.42 RT	TC 575.47 LT	TC 575.51 RT	TC 575.56 RT	TC 575.61 RT	TC 575.62 LT & RT	TC 575.67 LT & RT	TC 575.72 RT	TC 575.77 RT	TC 575.82 LT & RT	TC 575.87 LT & RT	TC 575.92 LT	TC 575.97 RT
--------------	--------------	--------------	--------------	-------------------	--------------	--------------	--------------	--------------	--------------	-------------------	-------------------	--------------	--------------	-------------------	-------------------	--------------	--------------



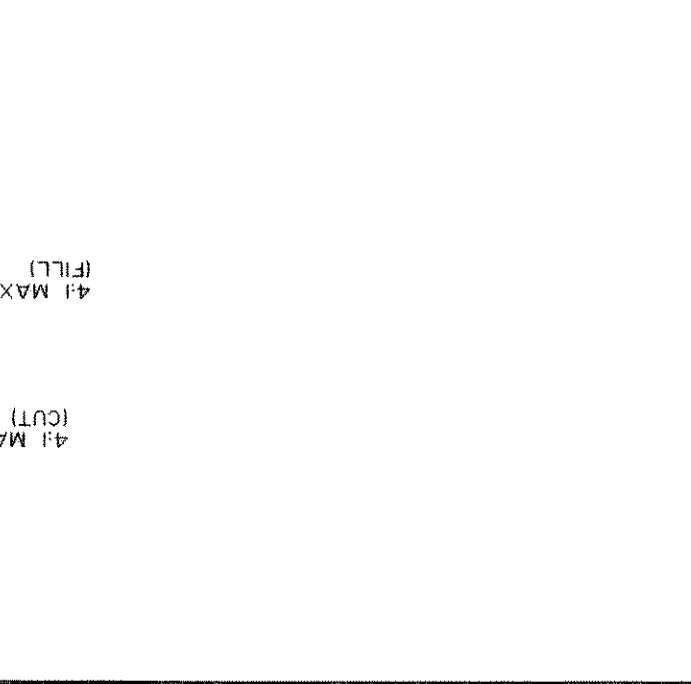
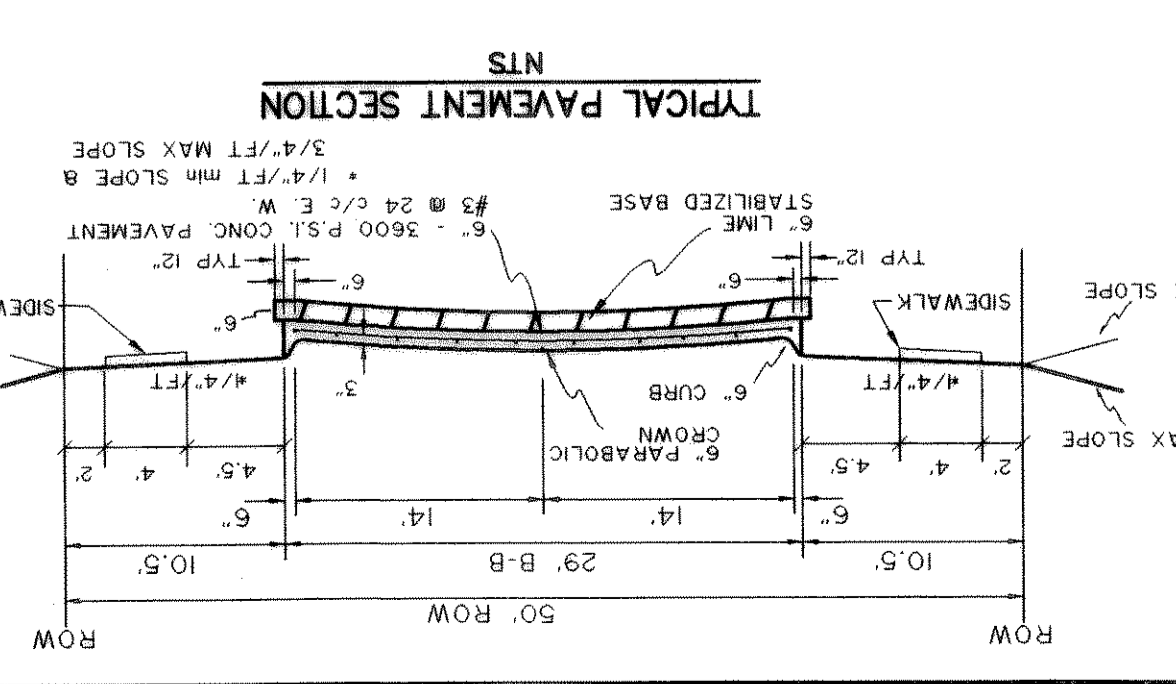
THESE CONSTRUCTION PLANS WERE PREPARED UNDER THE RESPONSIBLE SUPERVISION OF DAN M. DOWDEY, REGISTERED PROFESSIONAL ENGINEER, NO. 21433. DAN M. DOWDEY DOCUMENT WAS AUTHORIZED BY THE SEAL APPEARING ON THIS DOCUMENT.

STATE OF TEXAS
 PROFESSIONAL ENGINEER
 REGISTRATION NO. 21433
 DAN M. DOWDEY

CAUTION!
 EXISTING GAS LINE IN THIS AREA. CONTRACTOR TO CALL TXU PIPELINE SERVICES AT 972-679-7219 AT LEAST 72 HOURS PRIOR TO CONSTRUCTION TO VERIFY LOCATION & ELEVATION.

PAVING GENERAL NOTES

- Street construction shall conform to the "Standard Specifications for Public Works Construction North Central Texas" and the Standard Construction Details as modified by City of Rockwall.
- All street pavement shall be Class "S" concrete (minimum 3600 psi). 6 sock min, 6.5 sock min for hand pour and all alley pavement shall be Class "T" concrete (minimum 4000 psi). 6.5 sock min, 7 sock min for hand pour per item 7.4.5 P.W.C.N.C.T. Both methods reinforced with #3 or #4 bars shown, both spaced 24" O.C.E.W. hand finishing will be as per item 5.8.2. (h)(2) with 6.5 sock minimum or machine finishing will be as per item 5.8.2. (h)(1) with 6 sock minimum for 3600 psi.
- All pavements shall slope a minimum of 1/4" per foot up from the curb to the right-of-way line, then at a 4:1 slope to match existing grade.
- Swiming and sealing of all longitudinal and transverse pavement joints shall be considered subsidiary to all paving items.
- For classes of concrete pavement, refer to item 7.4.5 of "Standard Specifications for Public Works Construction North Central Texas".
- For placing of concrete pavement refer to item 7.6.9 of "Standard Specifications for Public Works Construction North Central Texas".
- For maximum slump of concrete for pavement refer to item 7.4.5 of "Standard Specifications for Public Works Construction North Central Texas".
- Contractor responsible for all lay down curbs at B.R.'s (Typ), and Central Texas".
- Contractor responsible for the protection of all public utilities during the paving construction.
- All fill shall be compacted to 95% standard proctor density in a maximum of 6" lifts or per geotechnical engineers report.
- Use sheep's foot roller in areas of fill.
- Homebuilder is responsible for construction of interior barrier free ramps.



BENCHMARK: SQUARE CUT ON TOP OF HEADWALL AT THE MOST NORTHERLY CORNER OF BRIDGE. NORTHWESTERLY SIDE OF FM 205. CITY OF ROCKWALL, TEXAS CONTROL MONUMENT #929. TOP OF HEADWALL IN NORTHWEST CORNER OF BRIDGE OVER SOUABBLE CREEK. SOUTHWESTERLY SIDE OF FM 205. ELEV = 524.55