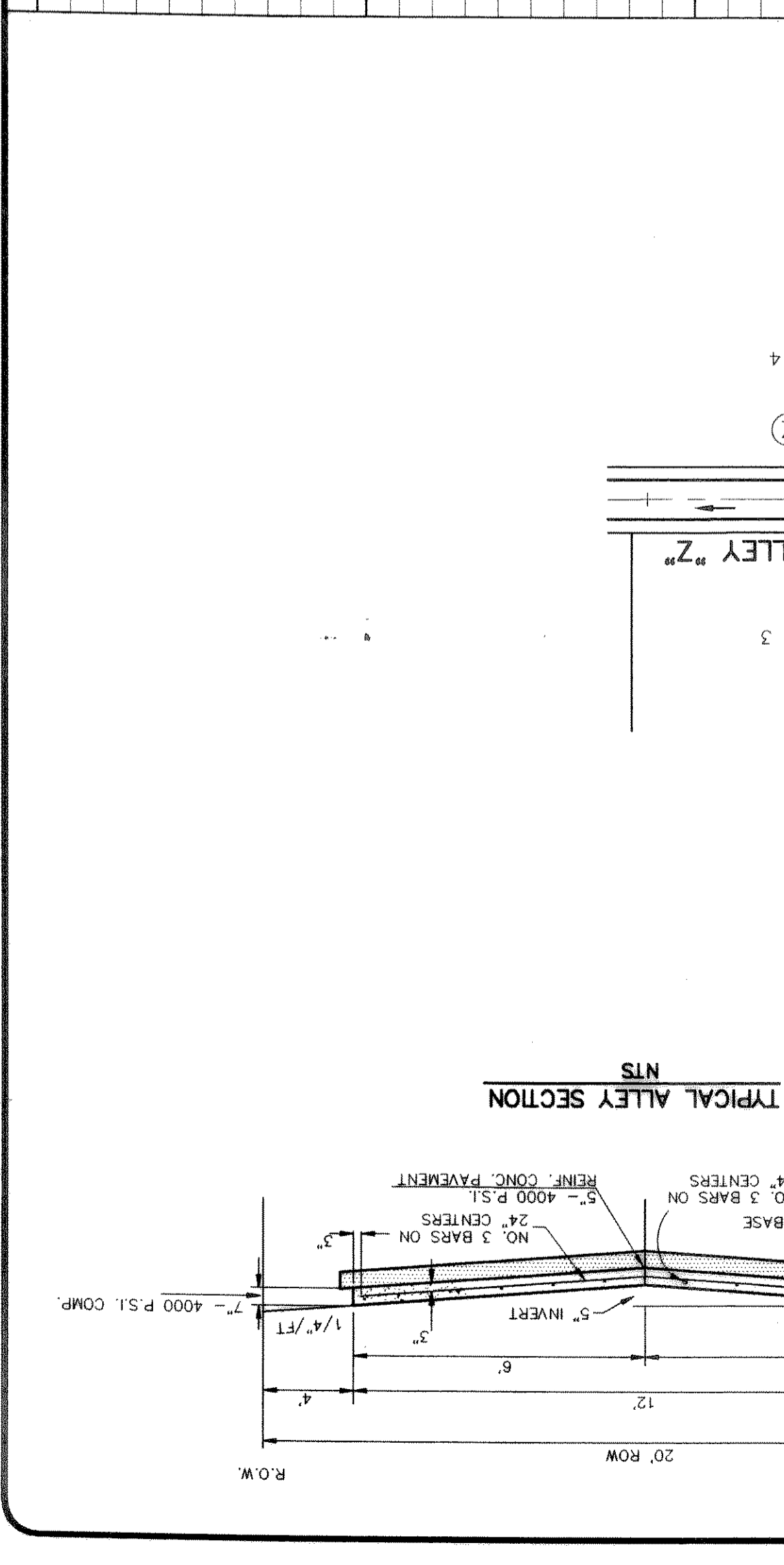
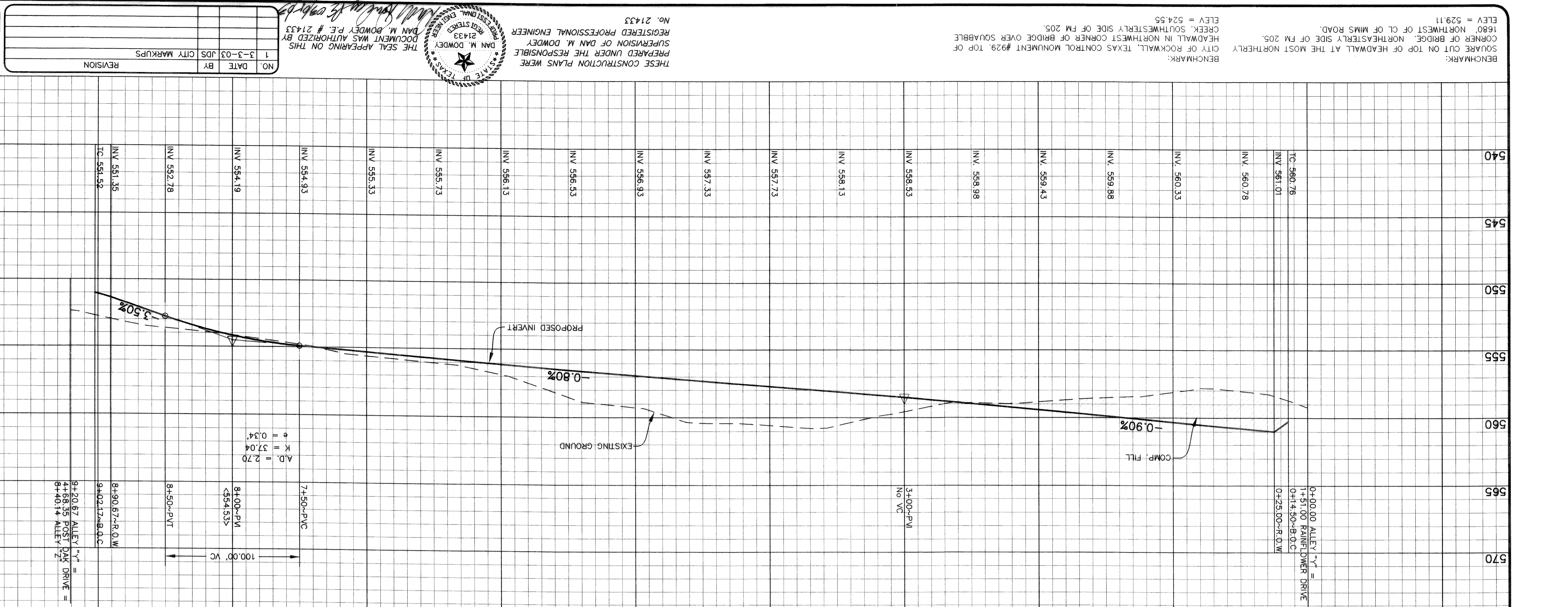


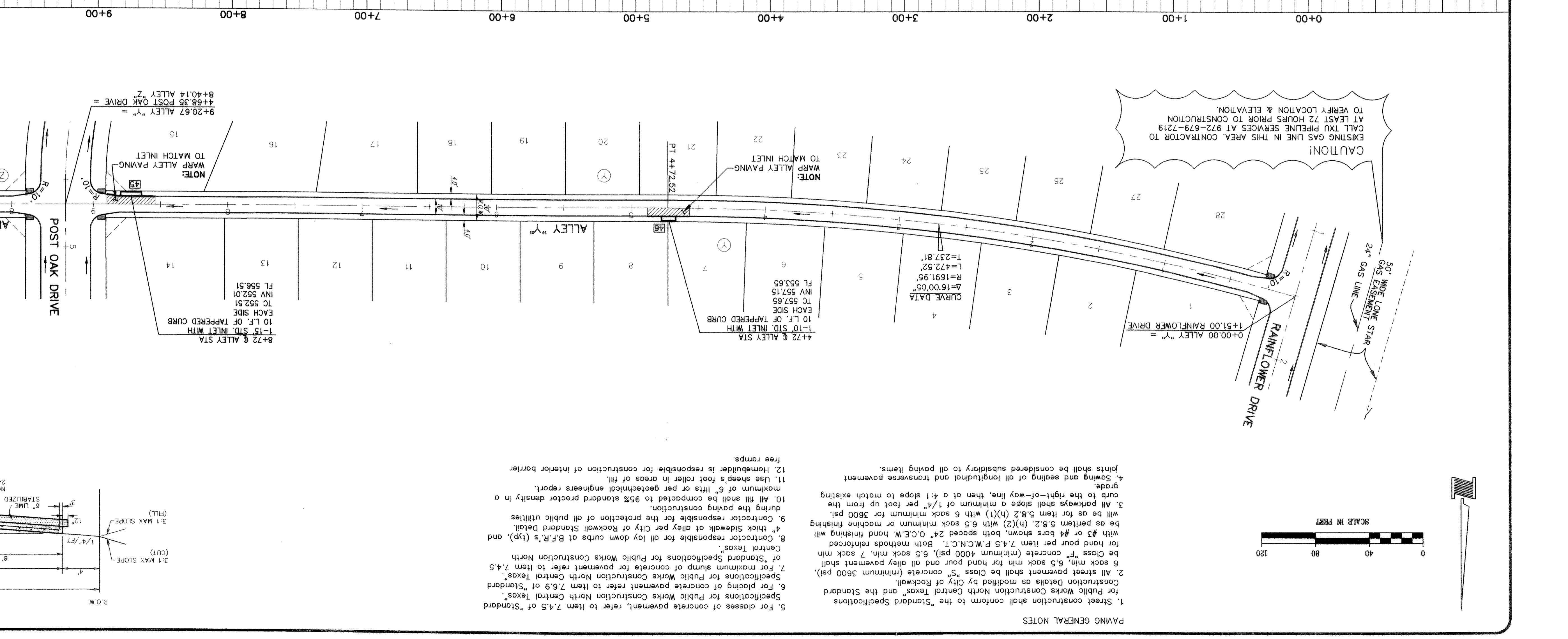
ALLEY "Y"
PAVING PLAN & PROFILE
HICKORY RIDGE PHASE FOUR
CITY OF ROCKWALL
ROCKWALL COUNTY, TEXAS

NO.	DATE	BY	CITY	MARKUPS	REVISION
1	3-3-03	JDS			

RECORD DRAWINGS January 27, 2004
 NOTE: THE INTENT OF THE OWNER AND ENGINEER WAS TO CONSTRUCT THE IMPROVEMENTS ACCORDING TO THESE PLANS AS APPROVED BY THE CITY OF ROCKWALL. THE LINES AND GRADES WERE SET ON THE GROUND FOR CONSTRUCTION ACCORDING TO SAID PLANS. WE ARE NOT AWARE OF ANY CHANGES OR REVISIONS TO THESE PLANS DURING CONSTRUCTION EXCEPT AS NOTED ON THE PLANS.



TYPICAL ALLEY SECTION
 NTS



PAVING GENERAL NOTES
 1. Street construction shall conform to the "Standard Specifications for Public Works Construction North Central Texas" and the Standard Construction Details as modified by City of Rockwall.
 2. All street pavement shall be Class "S" concrete (minimum 3500 psi).
 3. All street pavement shall be Class "S" concrete (minimum 3500 psi).
 4. All street pavement shall be Class "S" concrete (minimum 3500 psi).
 5. For classes of concrete pavement, refer to Item 7.4.5 of "Standard Construction North Central Texas".
 6. For placing of concrete pavement refer to Item 7.6.9 of "Standard Construction North Central Texas".
 7. For maximum slump of concrete for pavement refer to Item 7.4.5 of "Standard Specifications for Public Works Construction North Central Texas".
 8. Contractor responsible for all lay down curbs at B.F.R.'s (typ.) and 4" thick sidewalk at alley per City of Rockwall Standard Detail.
 9. Contractor responsible for the protection of all public utilities during the paving construction.
 10. All fill shall be compacted to 95% standard proctor density in a maximum of 6" lifts or per geotechnical engineers report.
 11. Use sheep's foot roller in areas of fill.
 12. Homebuilder is responsible for construction of interior barrier free ramps.

THESE CONSTRUCTION PLANS WERE PREPARED UNDER THE RESPONSIBLE SUPERVISION OF DAN M. DOWDEY REGISTERED PROFESSIONAL ENGINEER NO. 21433
 DAN M. DOWDEY P.E. # 21433
 DOCUMENT WAS AUTHORIZED BY THE SEAL APPEARING ON THIS PAGE
 STATE OF TEXAS
 REGISTERED PROFESSIONAL ENGINEER
 21433
 DAN M. DOWDEY P.E. # 21433
 BENCHMARK: SQUARE CUT ON TOP OF HEADWALL AT THE MOST NORTHERLY CORNER OF BRIDGE. NORTHEASTERN SIDE OF FM 205. ELEV = 529.11
 BENCHMARK: HEADWALL IN NORTHWEST CORNER OF BRIDGE OVER SQUABBLE CREEK. SOUTHWESTERN SIDE OF FM 205. ELEV = 524.55