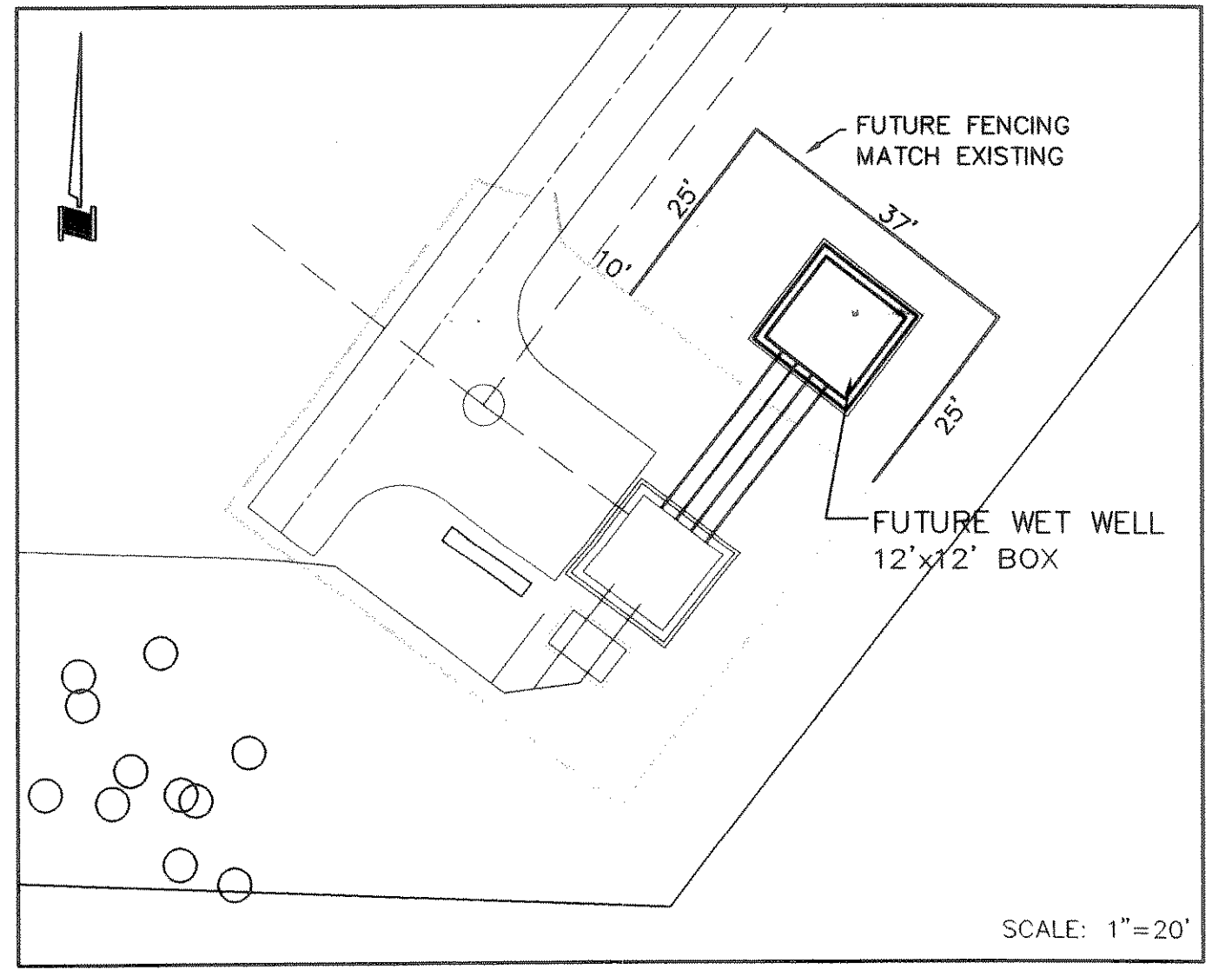


FUTURE VERTICAL SECTION  
SCALE: 1"=2'



FUTURE HORIZONTAL SECTION  
SCALE: 1"=3'

BENCHMARK:  
SQUARE CUT ON TOP OF HEADWALL AT THE MOST NORTHERLY CORNER OF BRIDGE. NORTHEASTERLY SIDE OF FM 205. 1680' NORTHWEST OF CL OF MIMS ROAD. ELEV = 529.11

BENCHMARK:  
CITY OF ROCKWALL, TEXAS CONTROL MONUMENT #929. TOP OF HEADWALL IN NORTHWEST CORNER OF BRIDGE OVER SQUABBLE CREEK. SOUTHWESTERLY SIDE OF FM 205. ELEV = 524.55

12" (MIN.) CEMENT TREATED SAND  
WHEN FOUND IN CLAY: IF ROCK IS PRESENT, POUR CONCRETE DIRECTLY ON ROCK.

THESE CONSTRUCTION PLANS WERE PREPARED UNDER THE RESPONSIBLE SUPERVISION OF DAN M. DOWDEY, REGISTERED PROFESSIONAL ENGINEER NO. 21433.  
*Dan M. Dowdey* 3/21/03



**RECORD DRAWINGS** January 27, 2004  
NOTE: THE INTENT OF THE OWNER AND ENGINEER WAS TO CONSTRUCT THE IMPROVEMENTS ACCORDING TO THESE PLANS AS APPROVED BY THE CITY OF ROCKWALL. THE LINES AND GRADES WERE SET ON THE GROUND FOR CONSTRUCTION ACCORDING TO SAID PLANS. WE ARE NOT AWARE OF ANY CHANGES OR REVISIONS TO THESE PLANS DURING CONSTRUCTION EXCEPT AS NOTED ON THE PLANS.

**FUTURE WET WELL STORAGE**

**LIFT STATION DETAILS**  
**HICKORY RIDGE PHASE FOUR**  
CITY OF ROCKWALL  
ROCKWALL COUNTY, TEXAS

**DOWDEY, ANDERSON & ASSOCIATES, INC.**  
5225 VILLAGE CREEK DR., STE. 200 (972) 931-0694 PLANO, TEXAS

NO.	DATE	BY	REVISION
1	3-3-03	DLH	CITY MARKUPS

DESIGN	DRAWN	CHECKED	DATE	SCALE	JOB	SHEET
DLH	DLH	DMD	MAR 2003	NOTED	99-066	5/6