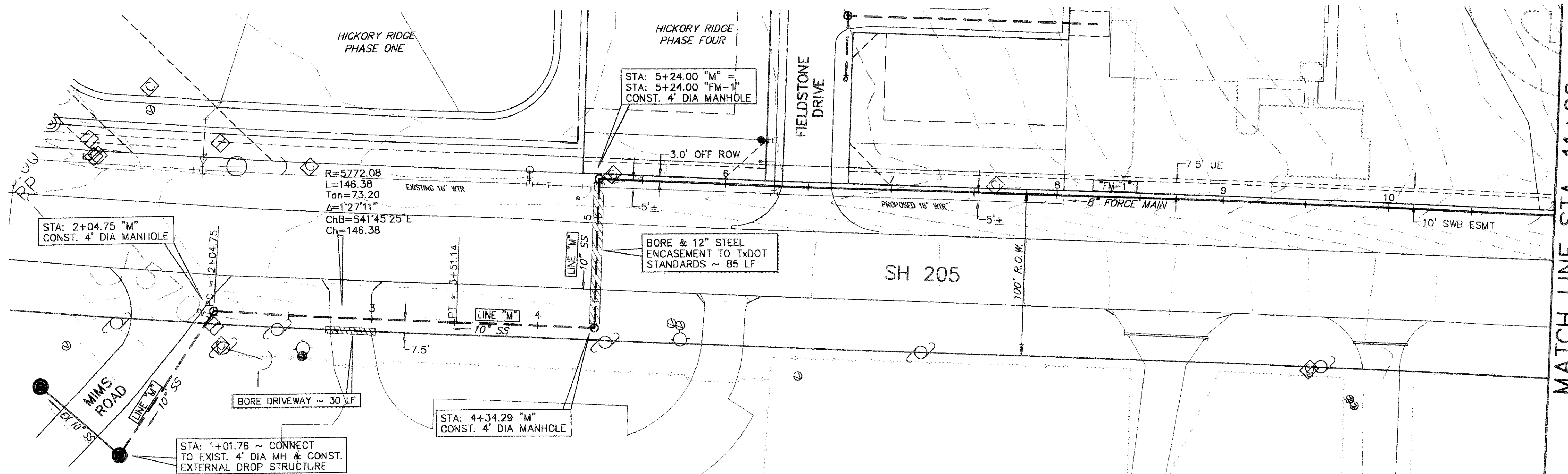
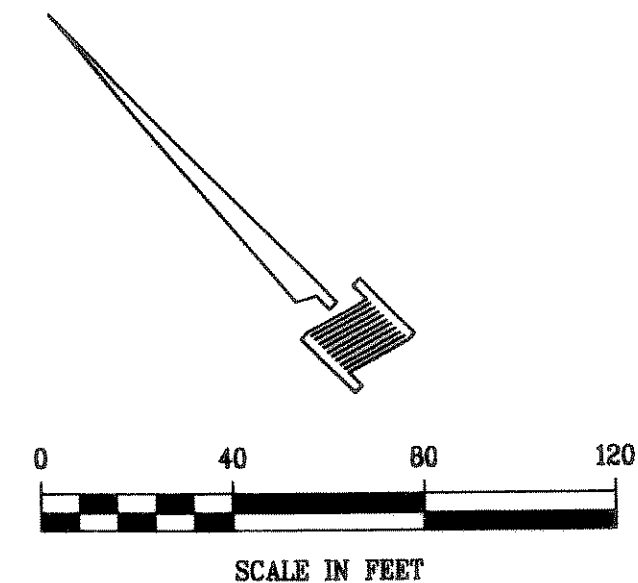


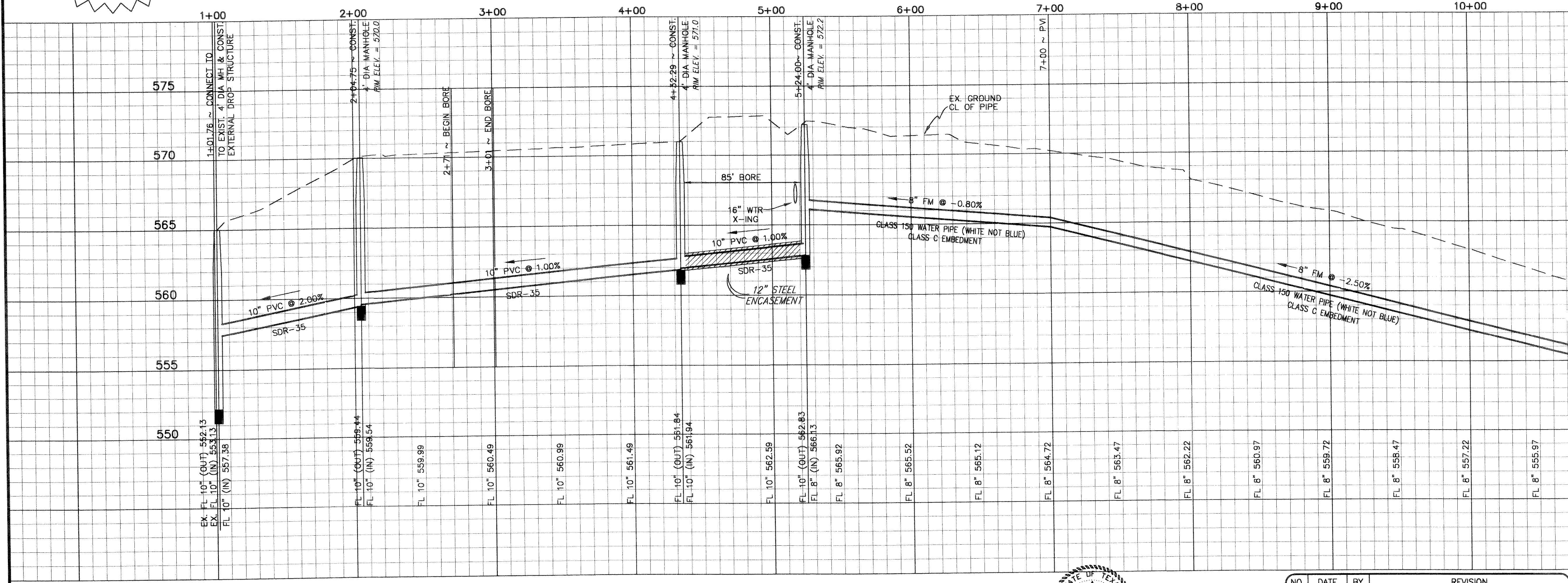
- UNLESS OTHERWISE NOTED, ALL MATERIAL AND CONSTRUCTION SHALL CONFORM TO THE CURRENT CITY OF ROCKWALL "STANDARD OF DESIGN, STANDARD SPECIFICATIONS FOR CONSTRUCTION, STANDARD DETAILS FOR THE CITY OF ROCKWALL" MANUAL.
- WHENEVER SANITARY SEWER MAINS ARE LOCATED INSIDE THE STREET R.O.W., THEY SHALL BE PLACED 3.5 FEET FROM R.O.W., UNLESS OTHERWISE SHOWN ON PLANS. ALL WATER AND SANITARY SEWER MAINS SHALL HAVE A 10.0 FEET MINIMUM LATERAL SEPARATION.
- SEWER PIPE AND SERVICES SHALL BE SDR35 P.V.C. GRAVITY PIPE OR SDR26 P.V.C. PIPE FOR MAINS DEEPER THAN 12' UNLESS SHOWN OTHERWISE ON THESE PLANS.
- IN THE EVENT AN ITEM IS NOT COVERED IN THE CITY OF ROCKWALL "STANDARD SPECIFICATIONS FOR CONSTRUCTION", THE CITY ENGINEER'S DECISION SHALL APPLY.
- AT WATER AND SEWER MAIN CROSSINGS, SEWER PIPE JOINTS SHALL NOT BE LOCATED CLOSER THAN TEN HORIZONTAL FEET FROM THE WATER MAIN. IF THIS CONDITION CANNOT BE ADHERED TO, THE SEWER PIPE JOINTS SHALL BE PRESSURE TYPE. (150 P.S.I. MINIMUM)
- TRENCH WALLS SHALL BE CONSTRUCTED IN STRICT ACCORDANCE WITH THE LATEST OCCUPATIONAL SAFETY AND HEALTH ADMINISTRATION STANDARDS AND MAY BE SLOPED OR VERTICAL ABOVE THE PIPE EMBEDMENT AT THE CONTRACTOR'S OPTION. IN SOME LOCATIONS, THE AVAILABLE WORKING AREA MAY BE INADEQUATE TO ALLOW FOR FULLY SLOPED TRENCH WALLS. IN THESE AREAS, THE CONTRACTOR SHALL PROVIDE TEMPORARY SHEETING, SHORING OR BRACING OF TRENCH WALLS, AS NECESSARY, IN STRICT ACCORDANCE WITH O.S.H.A. STANDARDS, TO PREVENT SLIDES, CAVE-INS, SETTLEMENT OR MOVEMENT OF THE BANKS AND TO PROVIDE SAFE WORKING CONDITIONS FOR WORKMEN. PAYMENT FOR SLOPED OR SHEETED, SHORED OR BRACED TRENCH WALLS CONSTRUCTED IN ACCORDANCE WITH O.S.H.A. STANDARDS SHALL BE LIMITED TO THE BID ITEMS IN THE PROPOSAL FOR TRENCH SAFETY SYSTEMS. TRENCH CONSTRUCTION SHALL BE LIMITED TO THE STREET RIGHT-OF-WAY, PERMANENT EASEMENTS AND AREAS DELINEATED AS LIMITS OF CONSTRUCTION AS SHOWN ON THE PLANS.

CAUTION!!!
UNDERGROUND UTILITIES

EXISTING UTILITIES AND UNDERGROUND FACILITIES INDICATED ON THESE PLANS HAVE BEEN LOCATED FROM REFERENCE INFORMATION SUPPLIED BY VARIOUS OWNERS OF THE FACILITIES. THE ENGINEER DOES NOT ACCEPT THE RESPONSIBILITY FOR THE UTILITY LOCATIONS SHOWN. IT SHALL BE THE RESPONSIBILITY OF THE CONTRACTOR TO VERIFY BOTH HORIZONTALLY AND VERTICALLY THE LOCATION OF ALL EXISTING UTILITIES AND UNDERGROUND FACILITIES PRIOR TO CONSTRUCTION, TO TAKE NECESSARY PRECAUTIONS IN ORDER TO PROTECT ALL FACILITIES ENCOUNTERED, AND TO NOTIFY THE ENGINEER PROMPTLY OF ALL CONFLICTS OF THE WORK WITH EXISTING FACILITIES. THE CONTRACTOR SHALL PRESERVE AND PROTECT ALL EXISTING UTILITIES FROM DAMAGE DURING CONSTRUCTION. ANY DAMAGE BY THE CONTRACTOR TO EXISTING UTILITIES SHALL BE REPAIRED BY THE CONTRACTOR AT HIS EXPENSE. CONTACT ALL POSSIBLE UTILITY AND UNDERGROUND FACILITY OWNERS.



WARNING!!!
EXISTING UNDERGROUND UTILITIES FIELD VERIFY LOCATION PRIOR TO CONSTRUCTION OR EXCAVATION



MATCH LINE STA. 11+00

RECORD DRAWINGS January 27, 2004
NOTE: THE INTENT OF THE OWNER AND ENGINEER WAS TO CONSTRUCT THE IMPROVEMENTS ACCORDING TO THESE PLANS AS APPROVED BY THE CITY OF ROCKWALL. THE LINES AND GRADES WERE SET ON THE GROUND FOR CONSTRUCTION ACCORDING TO SAID PLANS. WE ARE NOT AWARE OF ANY CHANGES OR REVISION TO THESE PLANS DURING CONSTRUCTION EXCEPT AS NOTED ON THE PLANS.

STA 1+01.76 TO 11+00
FORCE MAIN PLAN & PROFILE
HICKORY RIDGE PHASE FOUR
CITY OF ROCKWALL
ROCKWALL COUNTY, TEXAS

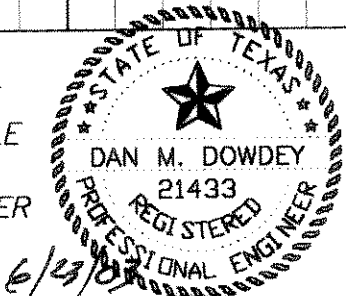
DESIGN		DRAWN		CHECKED		DATE		SCALE		JOB		SHEET	
DLH	DLH	MSD	MAR 2003	H: 1"=40'	V: 1"=4'	99-086	1	2					

BENCHMARK: SQUARE CUT ON TOP OF HEADWALL AT THE MOST NORTHERLY CORNER OF BRIDGE. NORTHEASTERLY SIDE OF FM 205. 1680' NORTHWEST OF CL OF MIMS ROAD. ELEV = 529.11

BENCHMARK: CITY OF ROCKWALL, TEXAS CONTROL MONUMENT #929. TOP OF HEADWALL IN NORTHWEST CORNER OF BRIDGE OVER SQUABBLE CREEK. SOUTH-WESTERLY SIDE OF FM 205. ELEV = 524.55

THESE CONSTRUCTION PLANS WERE PREPARED UNDER THE RESPONSIBLE SUPERVISION OF DAN M. DOWDEY REGISTERED PROFESSIONAL ENGINEER No. 21433

THE SEAL APPEARING ON THIS DOCUMENT WAS AUTHORIZED BY DAN M. DOWDEY P.E. # 21433



NO.	DATE	BY	REVISION
1	2/3/03	DLH	CHANGED SECTION OF FORCE MAIN TO GRAVITY LINE
2	3-3-03	DLH	CITY MARKUPS
3	6-23-03	JDS	MOVED FORCE MAIN 3' OFF ROW PER TXDOT MARKUPS