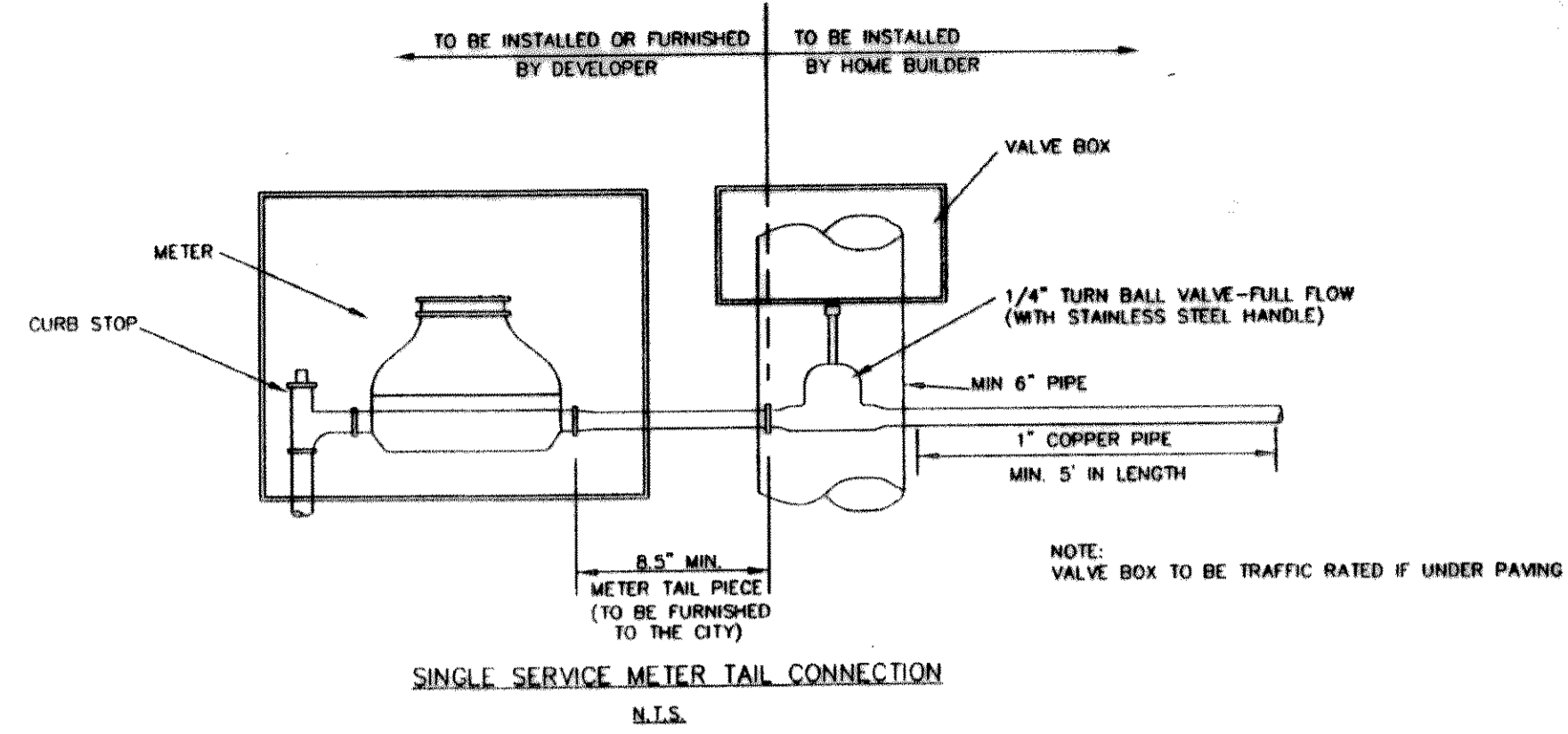


**WARNING!!!**  
EXISTING UNDERGROUND UTILITIES FIELD VERIFY LOCATION PRIOR TO CONSTRUCTION OR EXCAVATION

**CAUTION!**  
EXISTING GAS LINE IN THIS AREA. CONTRACTOR TO CALL TXU PIPELINE SERVICES AT 972-679-7219 AT LEAST 72 HOURS PRIOR TO CONSTRUCTION TO VERIFY LOCATION & ELEVATION.



**RECORD DRAWINGS** January 27, 2004  
NOTE: THE INTENT OF THE OWNER AND ENGINEER WAS TO CONSTRUCT THE IMPROVEMENTS ACCORDING TO THESE PLANS AS APPROVED BY THE CITY OF ROCKWALL. THE LINES AND GRADES WERE SET ON THE GROUND FOR CONSTRUCTION ACCORDING TO SAID PLANS. WE ARE NOT AWARE OF ANY CHANGES OR REVISIONS TO THESE PLANS DURING CONSTRUCTION EXCEPT AS NOTED ON THE PLANS.

THESE CONSTRUCTION PLANS WERE PREPARED UNDER THE RESPONSIBLE SUPERVISION OF DAN M. DOWDEY, REGISTERED PROFESSIONAL ENGINEER NO. 21433.



**WATER & SANITARY SEWER PLAN**  
**HICKORY RIDGE - PHASE FOUR**

CITY OF ROCKWALL  
ROCKWALL COUNTY, TEXAS

**DOWDEY, ANDERSON & ASSOCIATES, INC.**  
5225 VILLAGE CREEK DR., STE. 200 (972) 931-0694 PLANO, TEXAS

| DESIGN | DRAWN | CHECKED | DATE      | SCALE   | JOB    | SHEET |
|--------|-------|---------|-----------|---------|--------|-------|
| JDS    | LAC   | MSD     | DEC. 2002 | 1"=100' | 99-066 | 1/2   |

| NO. | DATE    | BY  | REVISION     |
|-----|---------|-----|--------------|
| 1   | 3-3-03  | JDS | CITY MARKUPS |
| 2   | 3-14-03 | JDS | CITY MARKUPS |