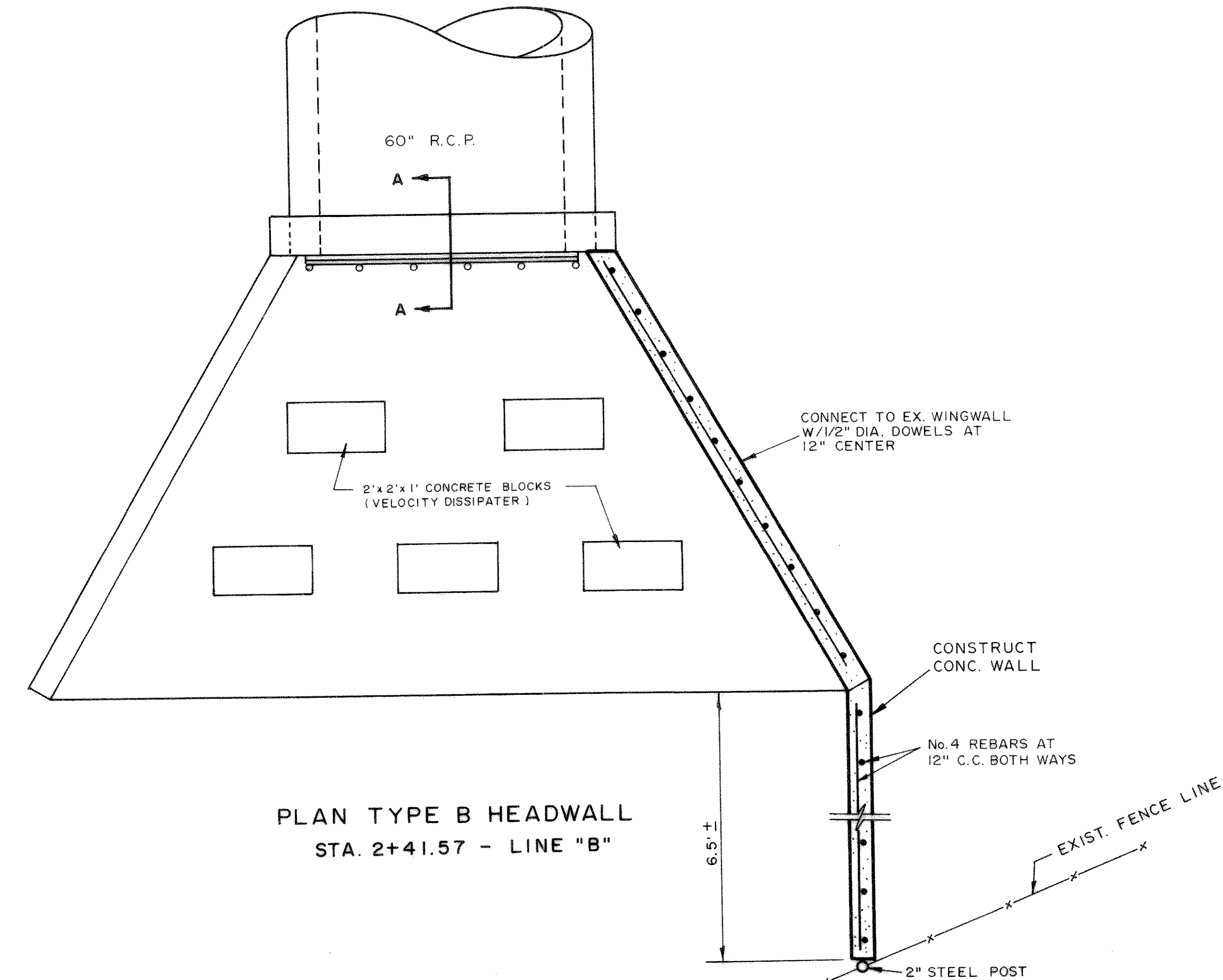


DETAIL A-A  
STA. 2+41.57 - LINE "B"

ELEVATION TYPE B HEADWALL  
STA. 2+41.57 - LINE "B"



PLAN TYPE B HEADWALL  
STA. 2+41.57 - LINE "B"

**RECORD DRAWINGS** January 27, 2004  
NOTE: THE INTENT OF THE OWNER AND ENGINEER WAS TO CONSTRUCT THE IMPROVEMENTS ACCORDING TO THESE PLANS AS APPROVED BY THE CITY OF ROCKWALL. THE LINES AND GRADES WERE SET ON THE GROUND FOR CONSTRUCTION ACCORDING TO SAID PLANS. WE ARE NOT AWARE OF ANY CHANGES OR REVISION TO THESE PLANS DURING CONSTRUCTION EXCEPT AS NOTED ON THE PLANS.



These construction plans were prepared under the responsible supervision of Dan M. Dowdey, Registered Professional Engineer No. 21433.

*Dan M. Dowdey* PE 8/19/03

NO.	DATE	BY	REVISION
1	12/16/03	R.E.	WINGWALL MODIFICATION

<b>STORM SEWER DETAIL</b>			
<b>HICKORY RIDGE PHASE FOUR</b>			
CITY OF ROCKWALL			
ROCKWALL COUNTY, TEXAS			
<b>DOWDEY, ANDERSON &amp; ASSOCIATES, INC.</b>			
5225 VILLAGE CREEK DRIVE		SUITE 200	
(972) 931-0694		PLANO, TEXAS 75093	
DESIGN	DRAWN	CHECKED	DATE
D.M.D.	R.E.	D.M.D.	AUG. 2003
SCALE	JOB	SHEET	
	99-066	3A / 12	