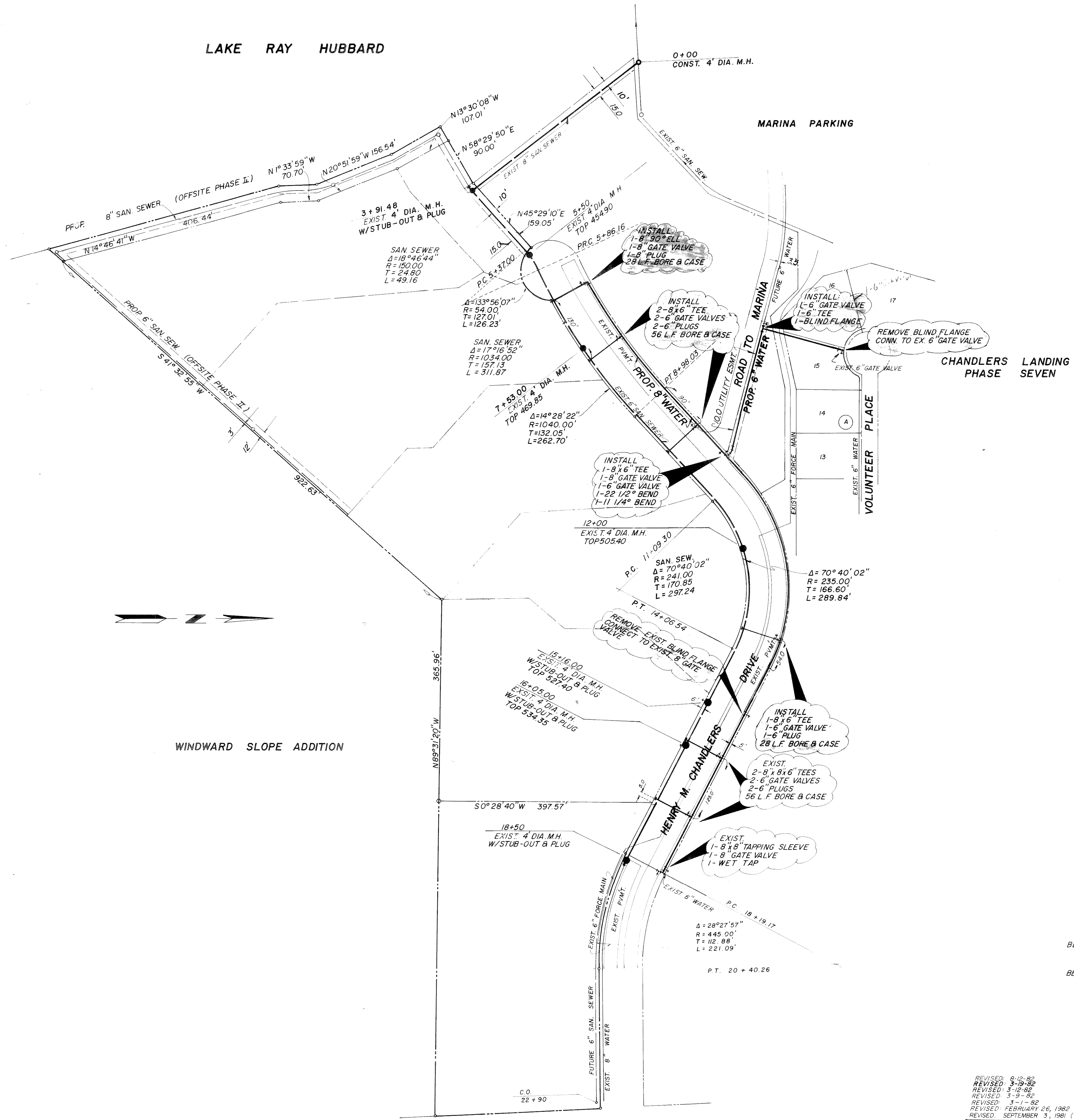


LAKE RAY HUBBARD



BENCH MARK # I:
IRON ROD IN 42" PECAN IN ISLAND AT NORTHWEST
END OF MARINA PARKING. ELEV. 443.76

BENCH MARK # II:
R.R. SPIKE IN 10" PECAN AT P.I. OF BULKHEAD. ELEV. 440.76

AS BUILT

REVISED: 6-12-82
REVISED: 3-19-82
REVISED: 3-18-82
REVISED: 3-9-82
REVISED: 3-1-82
REVISED: FEBRUARY 26, 1982
REVISED: SEPTEMBER 3, 1981 (BLARINGS & DIS)

EXHIBIT "B-1"

WATER & SEW. PLAN				CHANDLERS LANDING			
CONDOMINIUMS							
DESIGN:	DRAWN:	SCALE:	DATE:	328-8133	HAROLD L. EVANS - CONSULTING ENGINEER DALLAS		
D.E.O.	D.M.A.	1" = 100'	DEC. 1979				