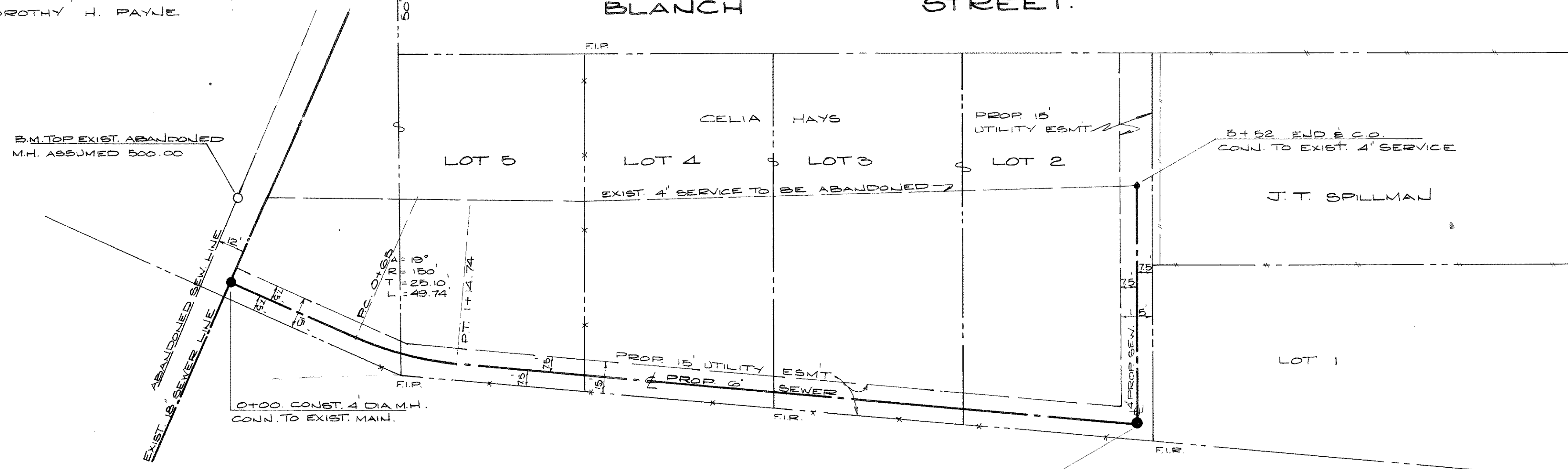


ALFRED E. PAYNE
DOROTHY H. PAYNE

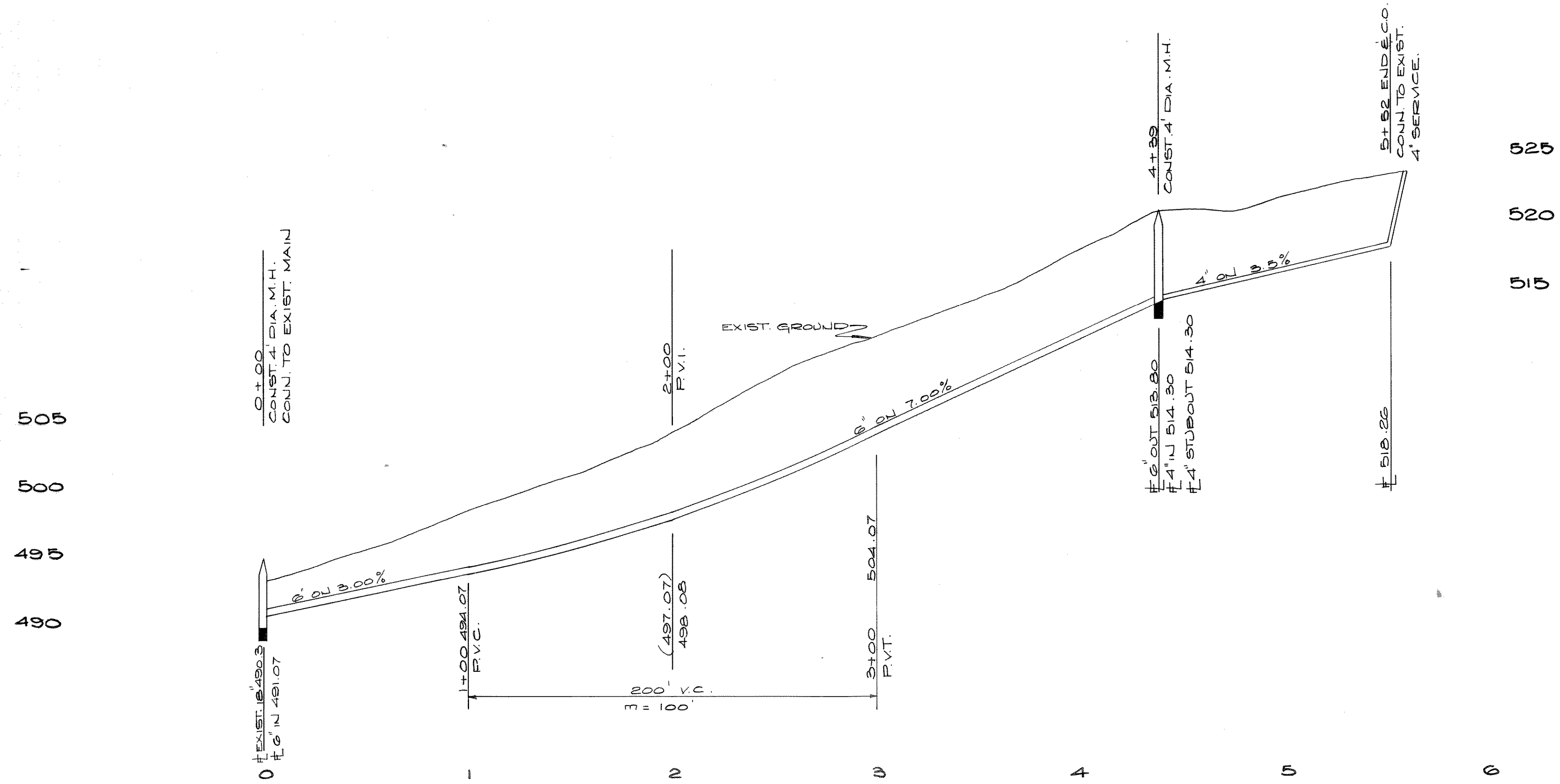
BLANCH STREET



NOTE TO CONTRACTOR:
CONTRACTOR TO VERIFY LOCATION OF
EXISTING 4" SERVICE AT 5+52

NASH STREET

U.S. HIGHWAY
Vp 66



AS BUILT

HAYS SUBDIVISION AN UNRECORDED SUBDIVISION					
SANITARY SEWER IMPROVEMENTS					
CITY OF ROCKWALL ROCKWALL, TEXAS.					
HAROLD L. EVANS CONSULTING ENGINEER					
DESIGN	DRAWN	DATE	SCALE	NOTES	FILE NO.
G.C.W.	H.E.M. D.M.	1-30-78	1" = 40'H 1" = 2'V		7908