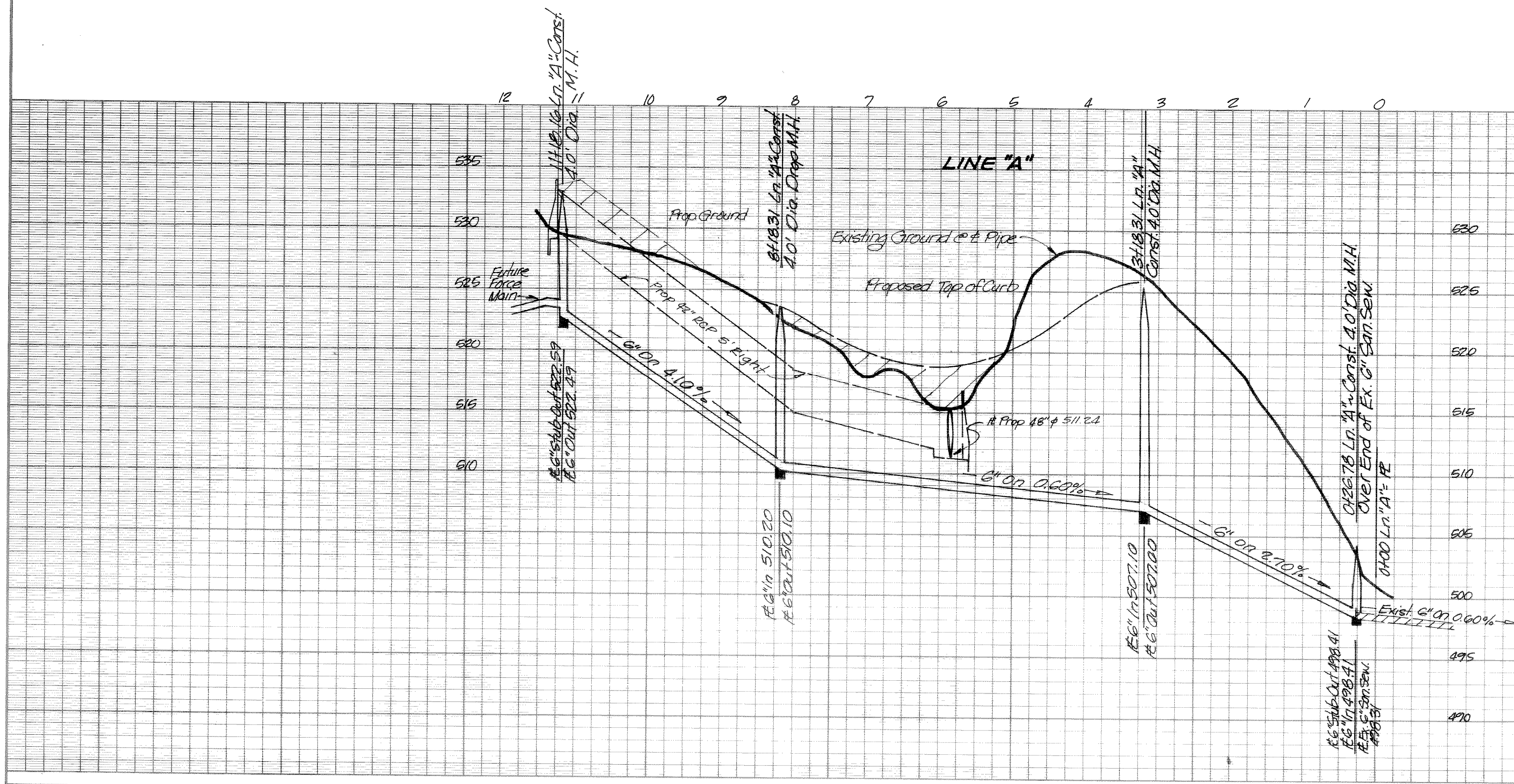


NOTE 8 - All Sanitary Sewer Mains To Be SDR 35.
 - Water Mains To Have 4.0' Depth Typically.



AS BUILT

WATER & SANITARY SEWER
HARRIS HEIGHTS ADDITION PHASE TWO
CITY OF ROCKWALL
ROCKWALL COUNTY, TEXAS
HAROLD L. EVANS - CONSULTING ENGINEER

DESIGN	DRAWN	DATE	SCALE	NOTES	FILE	JES
TVA	TVA	3-8-84	1"=100'H, 1"=6'V.			88235