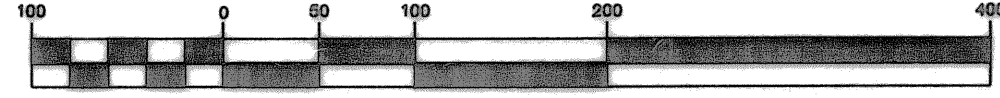
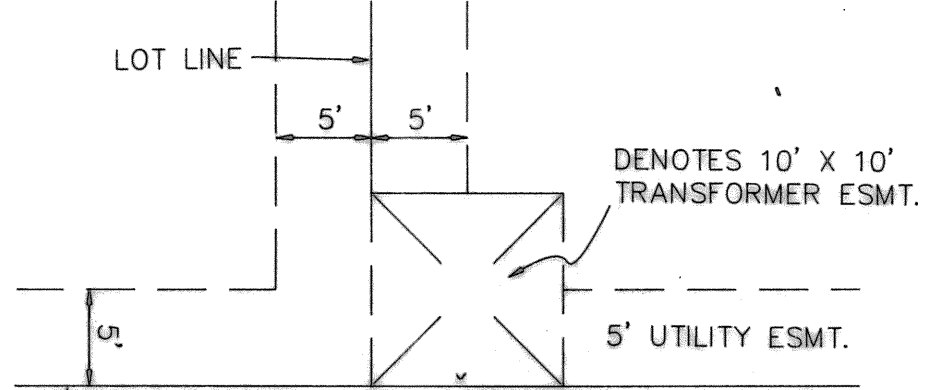


GRAPHIC SCALE



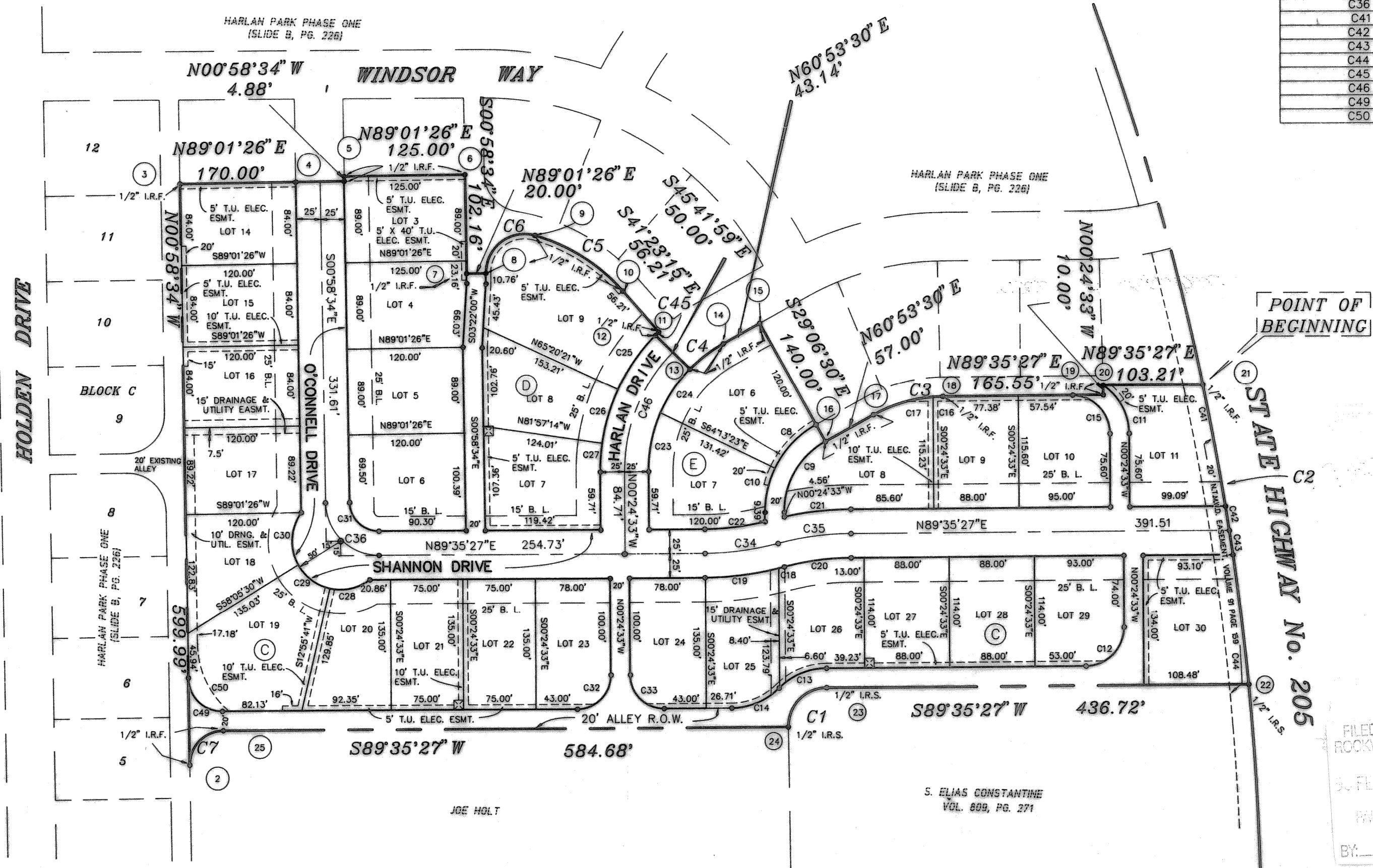
(IN FEET)
1 inch = 100 ft.



TYPICAL T.U. ELECTRIC EASEMENT LOCATION

CURVE	RADIUS	LENGTH	TANGENT	CHORD	BEARING	DELTA
C1	40.00'	63.23'	40.40'	56.85'	S44°18'27"W	90°34'0"
C2	2815.03'	313.09'	156.71'	312.93'	S08°46'18"E	06°22'2"
C3	150.00'	75.13'	38.37'	74.35'	N75°14'29"E	28°41'5"
C4	150.00'	43.44'	21.87'	43.28'	N52°35'46"E	16°35'2"
C5	190.00'	108.92'	56.00'	107.43'	S57°48'34"E	32°50'3"
C6	40.00'	74.52'	53.81'	64.20'	N52°23'46"E	106°44'4"
C7	35.00'	55.32'	35.35'	49.74'	S44°18'27"W	90°34'0"
C8	102.80'	63.00'	32.52'	62.02'	S43°20'04"W	35°06'5"
C9	82.80'	88.58'	49.06'	84.42'	S30°14'29"W	61°18'0"
C10	102.80'	46.98'	23.91'	46.57'	S12°41'02"W	26°11'1"
C11	60.00'	59.11'	32.20'	56.75'	N28°37'50"W	56°26'34"
C12	40.00'	62.83'	40.00'	56.57'	N44°35'27"E	90°00'0"
C13	70.00'	54.55'	28.74'	53.18'	S67°16'04"W	44°38'46"
C14	70.00'	54.55'	28.74'	53.18'	N67°16'04"E	44°38'46"
C15	40.00'	62.83'	40.00'	56.57'	N-5°24'33"W	90°00'0"
C16	150.00'	10.63'	5.32'	10.63'	S87°33'39"W	04°03'35"
C17	150.00'	64.51'	32.76'	64.01'	S73°12'41"W	24°38'22"
C18	325.00'	6.26'	3.13'	6.26'	N75°32'02"E	01°06'11"
C19	325.00'	76.61'	38.48'	76.43'	N82°50'17"E	13°30'19"
C20	275.00'	70.11'	35.25'	69.92'	S82°17'13"W	14°36'27"
C21	325.00'	69.38'	34.82'	69.24'	S83°28'32"W	12°13'50"
C22	275.00'	63.02'	31.65'	62.89'	N83°01'31"E	13°07'51"
C23	150.00'	61.97'	31.43'	61.53'	S11°25'32"W	23°40'11"
C24	150.00'	55.08'	27.85'	54.77'	S33°46'49"W	21°02'24"
C25	200.00'	73.60'	37.22'	73.19'	S35°12'13"W	21°05'08"
C26	200.00'	58.00'	29.20'	57.79'	S16°21'12"W	16°36'53"
C27	200.00'	29.51'	14.78'	29.49'	S03°49'06"W	08°27'19"
C28	50.00'	43.81'	23.43'	42.43'	N77°49'28"E	50°12'26"
C29	50.00'	42.03'	22.35'	40.80'	S52°59'24"E	48°09'51"
C30	50.00'	56.55'	31.73'	53.58'	S03°29'35"W	64°48'06"
C31	30.00'	46.83'	29.70'	42.22'	S45°41'33"E	89°25'59"
C32	35.00'	54.98'	35.00'	49.50'	N44°35'27"E	90°00'0"
C33	35.00'	54.98'	35.00'	49.50'	S45°24'33"E	90°00'0"
C34	300.00'	76.49'	38.45'	76.28'	N82°17'13"W	14°36'29"
C35	300.00'	76.49'	38.45'	76.28'	S82°17'13"W	14°36'29"
C36	55.00'	85.85'	54.46'	77.40'	S45°41'33"E	89°25'59"
C41	2815.03'	127.65'	63.84'	127.64'	N10°39'32"W	02°35'53"
C42	2815.03'	25.29'	12.65'	25.29'	N09°06'08"W	00°30'53"
C43	2815.03'	25.26'	12.63'	25.26'	N08°35'17"W	00°30'51"
C44	2815.03'	134.89'	67.46'	134.88'	N06°57'29"W	02°44'44"
C45	200.00'	5.05'	2.52'	5.05'	S45°01'24"W	01°26'46"
C46	175.00'	136.56'	71.97'	133.12'	S21°56'44"W	44°42'34"
C49	35.00'	54.63'	34.66'	49.25'	S45°41'33"E	89°25'59"
C50	93.00'	78.96'	42.04'	76.61'	S25°17'15"E	48°38'54"

Harlan Park 2



SURFACE, ADJUSTED COORDINATES

2	7042315.50483601	2591922.75958860
3	7042915.41030077	2591912.53947918
4	7042918.30603445	2592082.51481465
5	7042923.19195762	2592082.43157710
6	7042925.32117357	2592207.41344169
7	7042823.17599540	2592209.15360727
8	7042823.51666995	2592229.15070563
9	7042862.69275249	2592280.01483802
10	7042805.46090658	2592370.93117387
11	7042763.28756943	2592408.09573916
12	7042759.71990548	2592404.52516834
13	7042724.79894542	2592440.30961381
14	7042751.09144928	2592474.69387343
15	7042772.07620674	2592512.38333885
16	7042649.75784775	2592580.48781009
17	7042677.48609688	2592630.28885622
18	7042696.42688735	2592702.18674618
19	7042697.60909746	2592867.72931247
20	7042707.60884245	2592867.65790052
21	7042708.34588340	2592970.86440294
22	7042399.07518508	2593018.58517178
23	7042395.95581387	2592581.88063209
24	7042355.27548417	2592542.17201305
25	7042351.10012463	2591957.50456695

FILED FOR RECORD
ROCKWALL CO., TEXAS
30 FEB 22 AM 9:41
PUBLIC CLERK
BY: JK DEPUTY

FINAL PLAT

HAROLD L. EVANS
CONSULTING ENGINEER
P.O. BOX 28365
2331 GUS THOMASSON ROAD, SUITE 102
DALLAS, TEXAS 75228, (214) 328-8133

HARLAN PARK - PHASE TWO

T.R. BAILEY SURVEY, ABSTRACT NO. 30
CITY OF ROCKWALL, ROCKWALL COUNTY, TEXAS
HOMAC ~ OWNER
P.O. BOX 536 - ROCKWALL, TEXAS 75089 (214) 384-5517

SCALE	DATE	JOB No.
1" = 100'	1/3/95	93144