

DRAINAGE CALCULATIONS

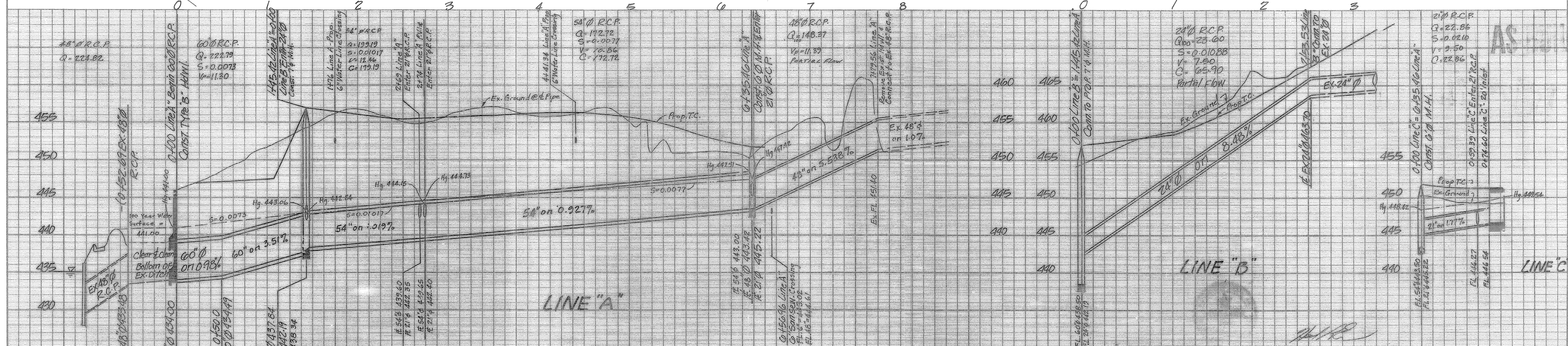
NO.	ACRES	T _c	C	I ₂₅	Q ₂₅	Q ₂₅ ACC.	I:100	Q ₁₀₀	Q ₁₀₀ ACC.	
01-011	21.46	1370	0.50				9.30	127.69	127.69	
5	3.64	10	"				9.8	17.84		
6	0.58	"	"				"	2.84	142.37	
10	2.50	"	"				"	12.25		
11	1.28	"	"				"	6.27		
12	1.19	"	"				"	5.83	172.72	
8	1.15	"	"				"	5.64		
Off Site								5.70		
9	1.05	10	0.50				9.8	5.15	189.21	
Off Site								6.50		
7	0.71	10	0.50				9.8	3.48	199.19	
Line B									23.60	222.79

RAY

STORM DRAINAGE CURVE DATA

NO.	DELTA	RADIUS	TANGENT	CHORD	LENGTH
D1	16° 05' 43"	800'	106'	210.16'	210.77'
D2	09° 41' 20"	83'	51.89'	94.96'	101.10'
D3	37° 02' 11"	83'	27.80'	52.72'	53.05'
D4	41° 02' 57"	77'	27.47'	55.04'	56.29'
D5	61° 54' 14"	70'	41.98'	72.00'	75.63'
D6	7° 06' 13"	123'	7.63'	15.24'	15.25'

B.M. Top Nut of F.H. at Intersection of Yacht Club Drive & Harbor Landing Drive
Elev. 514.57



REVISION DESCRIPTION	DATE	SCALE	DESIGN	DRAWN
1. Revisions	10-02-98			
2. Revisions	12-01-98			
3. Revisions	12-24-98			
4. Revisions	12-29-98			
	4-14-87	1" = 50' H. 1" = 6' V.	D.M.H.	

HAROLD L. EVANS & ASSOCIATES
Consulting Engineers
P. O. Box 28355
2331 Gus Thomasson Road, Suite 102
Dallas, Texas 75228 (214) 328-8133

STORM SEWER PLANS
HARBOR LANDING PHASE TWO
CITY OF ROCKWALL
ROCKWALL COUNTY, TEXAS

SHEET NO. **6** / 10
JOB NO. **8755**
9873