

7/21/99
BY ANPH INC.

ANPH, Inc. Architects and Planners 5489 Glen Lakes Drive Dallas, Texas 75231 (214)955-9086

anph

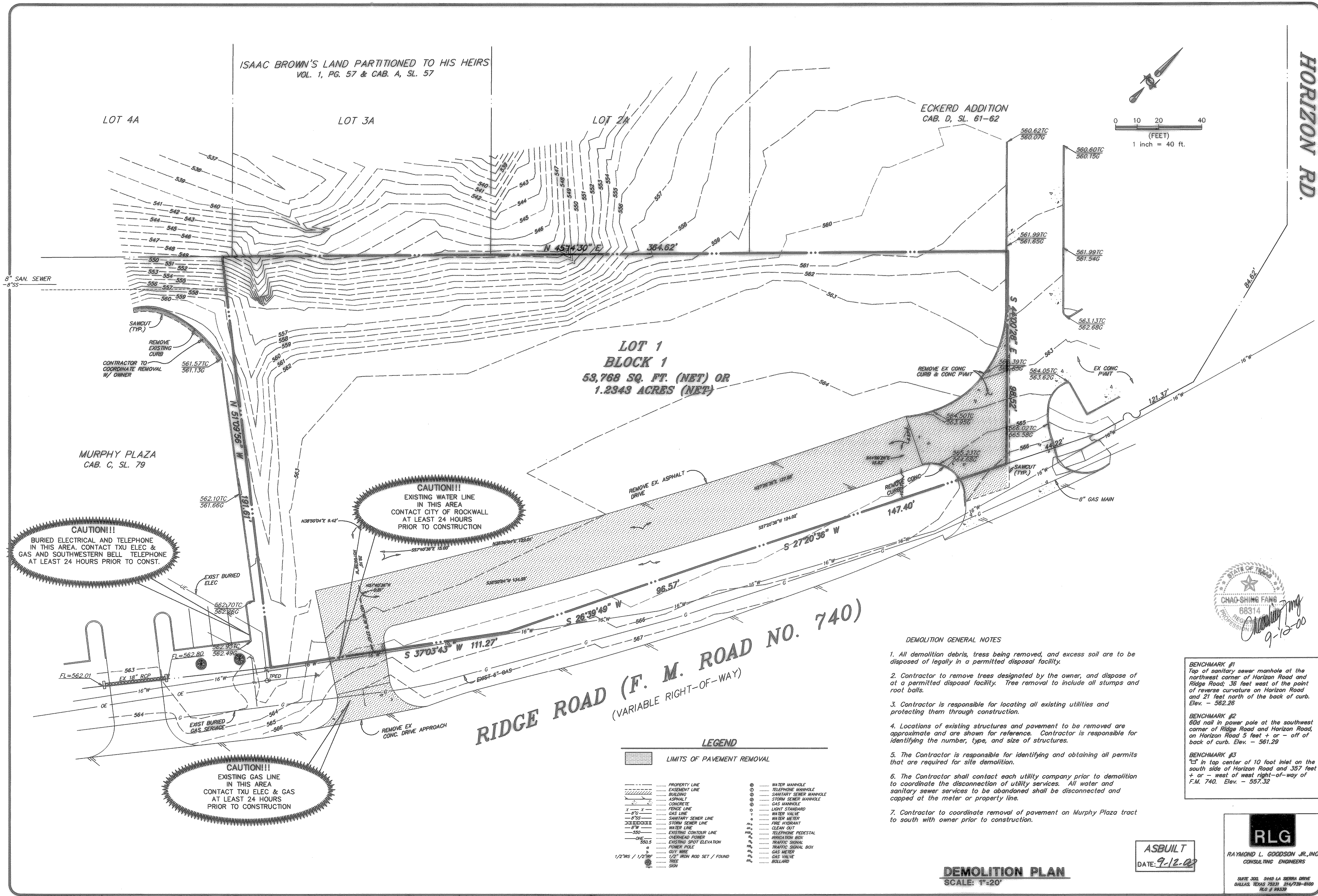
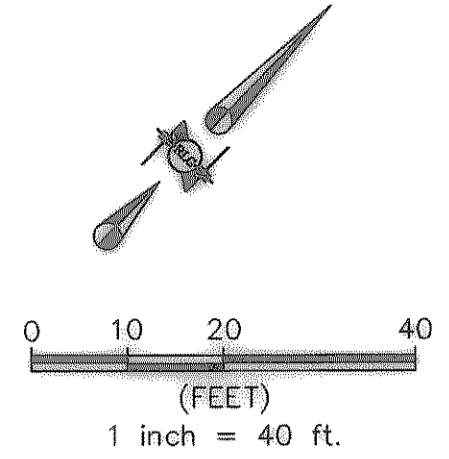
ROCKWALL OFFICE/RETAIL
CITY OF ROCKWALL, TEXAS

JOB NO. 99-339
DRAWN BY _____
CHECKED BY _____
ISSUE DATE 10-25-99
REVISIONS _____

SHEET NUMBER
C1
SHEET OF _____

STATE OF TEXAS
CHAO-SHING FANG
68314
REGISTERED PROFESSIONAL ENGINEER
9-12-00

RLG
RAYMOND L. GOODSON JR., INC.
CONSULTING ENGINEERS
SUITE 300, 5445 LA SIERRA DRIVE
DALLAS, TEXAS 75241 214/739-8100
P.L.C. # 94339



- DEMOLITION GENERAL NOTES**
1. All demolition debris, trees being removed, and excess soil are to be disposed of legally in a permitted disposal facility.
 2. Contractor to remove trees designated by the owner, and dispose of at a permitted disposal facility. Tree removal to include all stumps and root balls.
 3. Contractor is responsible for locating all existing utilities and protecting them through construction.
 4. Locations of existing structures and pavement to be removed are approximate and are shown for reference. Contractor is responsible for identifying the number, type, and size of structures.
 5. The Contractor is responsible for identifying and obtaining all permits that are required for site demolition.
 6. The Contractor shall contact each utility company prior to demolition to coordinate the disconnection of utility services. All water and sanitary sewer services to be abandoned shall be disconnected and capped at the meter or property line.
 7. Contractor to coordinate removal of pavement on Murphy Plaza tract to south with owner prior to construction.

BENCHMARK #1
Top of sanitary sewer manhole at the northwest corner of Horizon Road and Ridge Road; 36 feet west of the point of reverse curvature on Horizon Road and 21 feet north of the back of curb. Elev. - 562.26

BENCHMARK #2
1" in top center of 10 foot inlet on the south side of Horizon Road and 357 feet + or - west of west right-of-way of F.M. 740. Elev. - 561.29

BENCHMARK #3
1" in top center of 10 foot inlet on the south side of Horizon Road and 357 feet + or - west of west right-of-way of F.M. 740. Elev. - 557.32

LEGEND

	PROPERTY LINE		WATER MANHOLE
	EASEMENT LINE		TELEPHONE MANHOLE
	BUILDING		SANITARY SEWER MANHOLE
	ASPHALT		STORM SEWER MANHOLE
	CONCRETE		GAS MANHOLE
	FENCE LINE		LIGHT STANDARD
	8" GAS LINE		WATER VALVE
	SANITARY SEWER LINE		WATER METER
	8" WATER LINE		FIRE HYDRANT
	STORM SEWER LINE		CLEAN OUT
	4" WATER LINE		TELEPHONE PEDESTAL
	EXISTING CONTOUR LINE		IRRIGATION BOX
	OVERHEAD POWER		TRAFFIC SIGNAL
	EXISTING SPOT ELEVATION		GAS METER
	POWER POLE		GAS VALVE
	1/2" W/S / 1/2" W/F		TRAFFIC SIGNAL BOX
	1/2" IRON ROD SET / FOUND		TREE
	TREE		BOLLARD
	SNOW		

DEMOLITION PLAN
SCALE: 1"=20'

ASBUILT
DATE: 9-12-00

P:\CIVIL\990339\990339D1117.dwg Tue Sep 12 13:55:24 2000 R. KIDD