

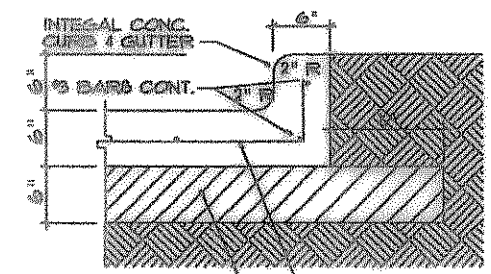
LEGEND

- CJ = CONSTRUCTION JOINT
- EJ = EXPANSION JOINT
- CONC. = CONCRETE
- O.C.E.W. = ON CENTER EACH WAY
- [Symbol] = NEW PAVING
- [Symbol] = EXISTING PAVING
- BFR = BARRIER FREE RAMP
- W = WITH
- STD = STANDARD
- LS = POUNDS
- SY = SQUARE YARDS
- [Symbol] = EXISTING PAVING

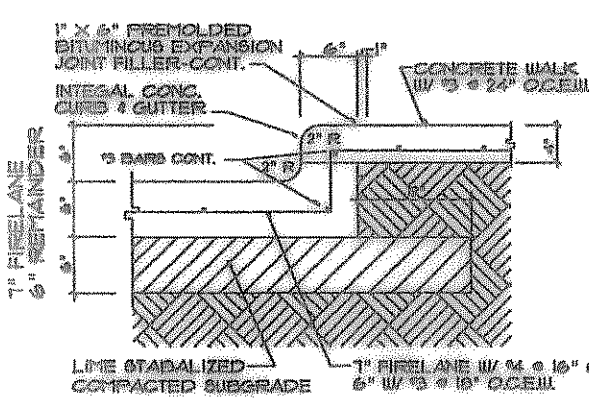
NOTES: STREETS, ALLEYS, SIDEWALKS, DRIVEWAYS, AND STORM DRAINAGE FACILITIES, IN PUBLIC R.O.W. SHALL BE CONSTRUCTED IN CONFORMANCE W/ TXDOT STANDARD CONSTRUCTION DETAILS OR CITY OF ROCKWALL STANDARD CONSTRUCTION DETAILS.

SPECIFICATIONS

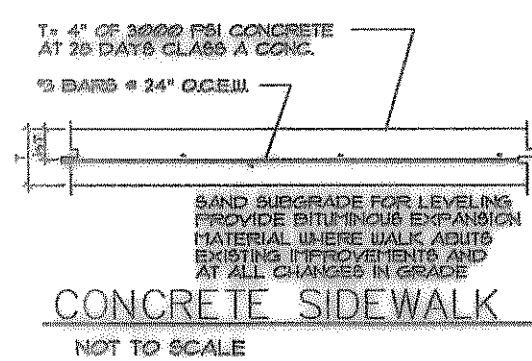
- SITE CONCRETE**
- SIDEWALKS: ALL CONCRETE TO BE 3600 PSI CONCRETE @ 28 DAYS MINIMUM COMPRESSIVE STRENGTH. MINIMUM THICKNESS TO BE 5 INCHES, REINFORCING TO BE A MIN. OF #3 BARS @ 18 INCHES ON CENTER EACH WAY. (FIRST STREET 3600 PSI, SACK MACHINE, 6 @ 1/2" SACK BY HAND ON 6% LIME SUBGRADE.)
 - A MINIMUM 4 INCH SAND CUSHION SHALL BE PLACED ON A SUBGRADE COMPACTED TO 95% STANDARD PROCTOR DENSITY.
 - FORMS SHALL BE SET TRUE TO LINE AND GRADE SHALL BE A MIN. OF 6-12 INCHES DEEP.
 - FORMS TO BE SET SO THAT NO CONCRETE SHALL FLOW UNDER THEM.
 - ASPHALT COAT OR DOUVE SLEEVE THROUGH SECOND POUR.
 - SET EXPANSION JOINTS AT 25'-0" MAX. SPACING. REDWOOD EXPANSION MATERIAL (1/2" MIN).
 - SAW CONSTRUCTION JOINTS (1/8" X 1") OR TOOLED JOINTS AT 5'-0" ON CENTER MAXIMUM.
- PAVING**
- ALL PAVING TO BE 3600 PSI CONCRETE @ 28 DAYS MIN. COMPRESSIVE STRENGTH. THICKNESS TO BE 6" INCH.
 - REINFORCING TO BE #3 BARS AT 18 INCH CENTERS MINIMUM. BARS TO BE AT GRADE 6" @.
 - SUBGRADE TO BE ADEQUATELY COMPACTED PER SOIL REPORT AND ALL GRADES TO CREATE POSITIVE DRAINAGE.
 - EXPANSION JOINT MATERIAL SHALL BE A MIN. OF 3/4" X THICKNESS OF PAVING. SLIP DOUELS AT ALL EXPANSION JOINTS OF A DIAMETER OF 1/2" EXPANSION JOINTS AT A MAX DISTANCE OF 40 FEET. CONSTRUCTION JOINTS OR SAUED JOINTS AT 20 FEET ON CENTER.



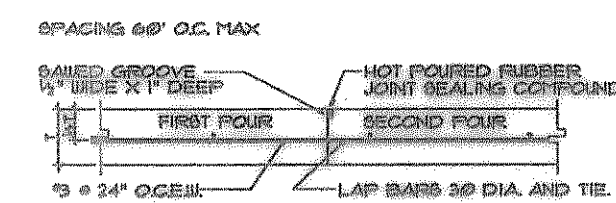
INTEGRAL CURB
NOT TO SCALE



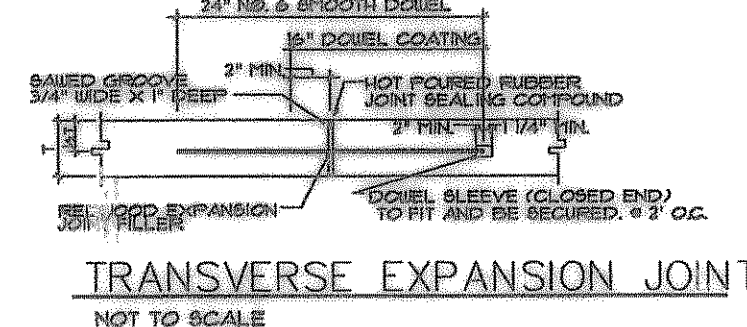
CURB DETAIL W/WALK (ON SITE)
NOT TO SCALE



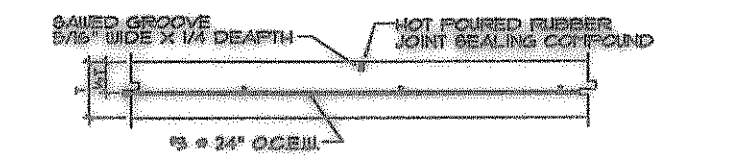
CONCRETE SIDEWALK
NOT TO SCALE



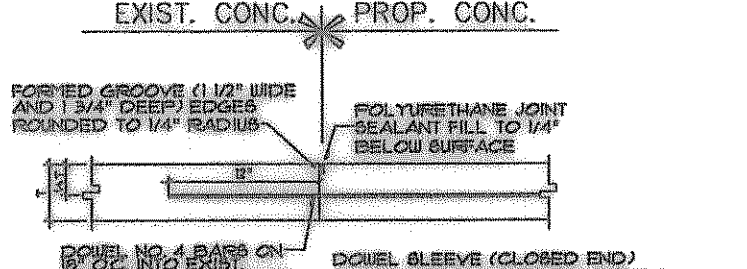
CONSTRUCTION JOINT
NOT TO SCALE



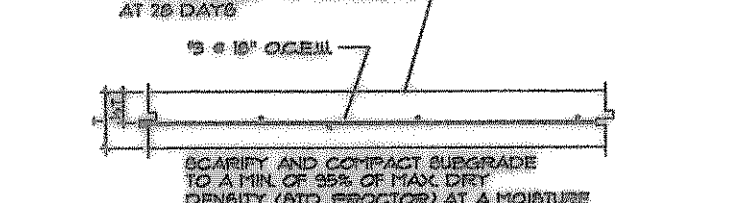
TRANSVERSE EXPANSION JOINT
NOT TO SCALE



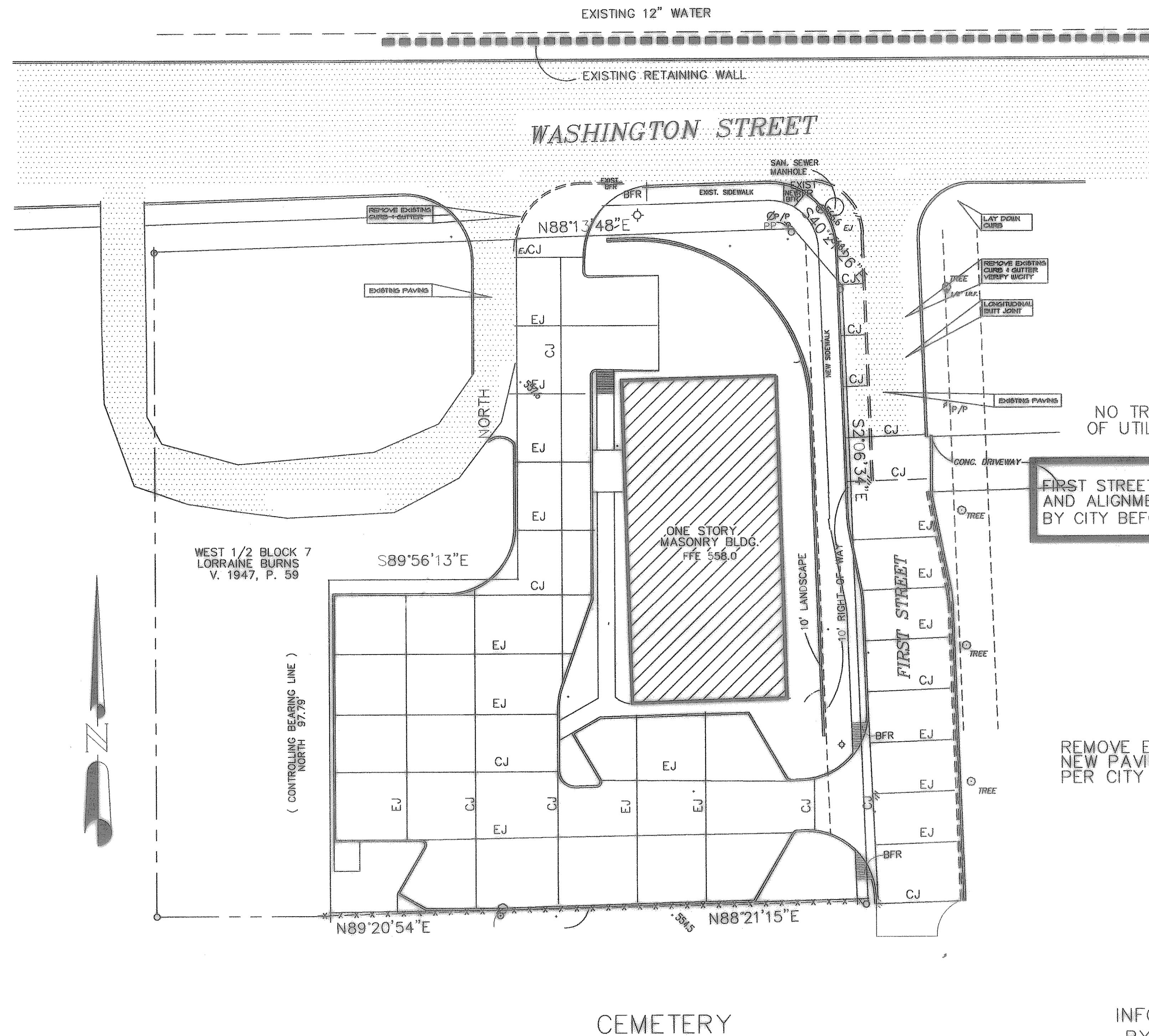
SAWED DUMMY JOINT
NOT TO SCALE



CONCRETE PAVEMENT CONNECTION
NOT TO SCALE



PAVEMENT SECTION
NOT TO SCALE



PAVING PLAN
SCALE 1" = 20'-0"

BOYDSTUN

INFORMATION PROVIDED BY PCC ENGINEERING VERIFY IN FIELD ANY DISCREPANCY NOTIFY ENGINEER/ARCHITECT

HAIR MOTION
SH 66 & FIRST STREET
ROCKWALL, TEXAS
TRACT 1
B.F. BOYDSTUN SURVEY
ABSTRACT NO.14
LOWE & ALLEN ADDITION
ROCKWALL, TEXAS
PREPARED BY
GERALD MONK
CONSULTING ENGINEER
972-864-8028

11-20-03 CITY COMMENTS
 6-2-03 CITY COMMENTS
 8-2-03 CITY COMMENTS
 7-15-03 REVISED DRIVE
 7-28-03 REVISED DRIVE
 12-18-03 CITY MEETING
 12-30-03 CONTRACTOR MEETING
 1-27-04 FIRST STREET WIDTH
 3-17-04 RECORD PAVING WIDTH
 8-08-03 CITY COMMENTS
 10-20-03 ROUTING
 10-28-03 CITY COMMENTS

GERALD E. MONK
CONSULTING ENGINEER

HAIR MOTION SALON
SH 66 & FIRST STREET
ROCKWALL, TEXAS

AS BUILT
 STATE OF TEXAS
 GERALD E. MONK
 44563
 9/05

Date Issued 5-16-03
 Project No. 2003-15
 Sheet Title PAVING PLAN
 Sheet Number C102
 Sequence of