

ADA COMPLIANCE: The ADA routes from buildings to sidewalks within public rights-of-way are designed to meet ADA requirements. Contractor shall ensure all grades along the ADA-required routes meet said requirements. The length of the barrier-free ramps (BFR) will need to be adjusted to meet grade requirements. In general, maximum grades are as follows:

Max. Longitudinal Grade Along ADA Routes: 5%
 Max. Longitudinal Grade on BFR: 12:1
 Max. Cross Slope Along Route: 2%
 Max. Grade in HC Spaces (All Directions): 2%
 Minimum Width of ADA Travelway: 36 in.

10" THICK 4,200 PSI CONCRETE (6.5 SACKS/CY).
 STA 0+00 - BEGIN GROVER LANE SAWCUT, REMOVE & REPLACE 92 L.F. EX. CONCRETE PAVEMENT CONST. DRIVE APPROACH PER C.O.R. STDS. CONN TO EX PAVEMENT WITH LONGITUDINAL BUTT JOINT PER C.O.R. STDS.

TEMPORARY ESMT (PARCEL 15E3) VOL. 5951, PG. 84 O.P.R.R.C.T.

10' TRAIL SEE SIDEWALK PLAN

20' UTILITY ESMT BY PLAT

CONSTRUCT 40 L.F. 5' WIDE CONC. SIDEWALK PER C.O.R. STDS.

CONSTRUCT 80 L.F. 5' WIDE CONC. SIDEWALK PER C.O.R. STDS.

CONSTRUCT 40 L.F. 5' WIDE CONC. SIDEWALK PER C.O.R. STDS.

CONSTRUCT 80 L.F. 5' WIDE CONC. SIDEWALK PER C.O.R. STDS.

CONSTRUCT 40 L.F. 5' WIDE CONC. SIDEWALK PER C.O.R. STDS.

CONSTRUCT 80 L.F. 5' WIDE CONC. SIDEWALK PER C.O.R. STDS.

CONSTRUCT 40 L.F. 5' WIDE CONC. SIDEWALK PER C.O.R. STDS.

CONSTRUCT 80 L.F. 5' WIDE CONC. SIDEWALK PER C.O.R. STDS.

CONSTRUCT 40 L.F. 5' WIDE CONC. SIDEWALK PER C.O.R. STDS.

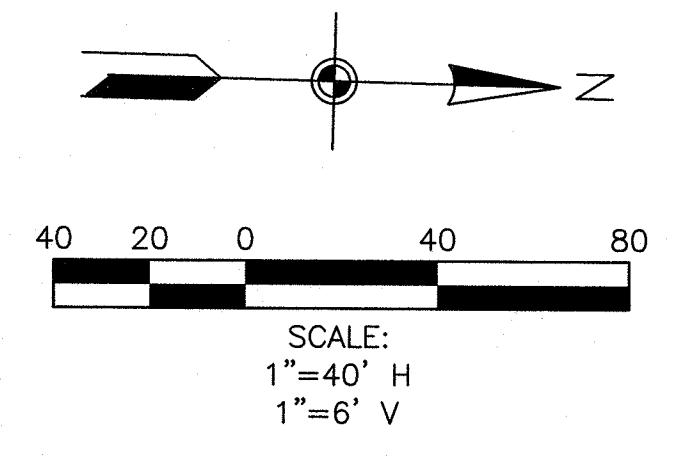
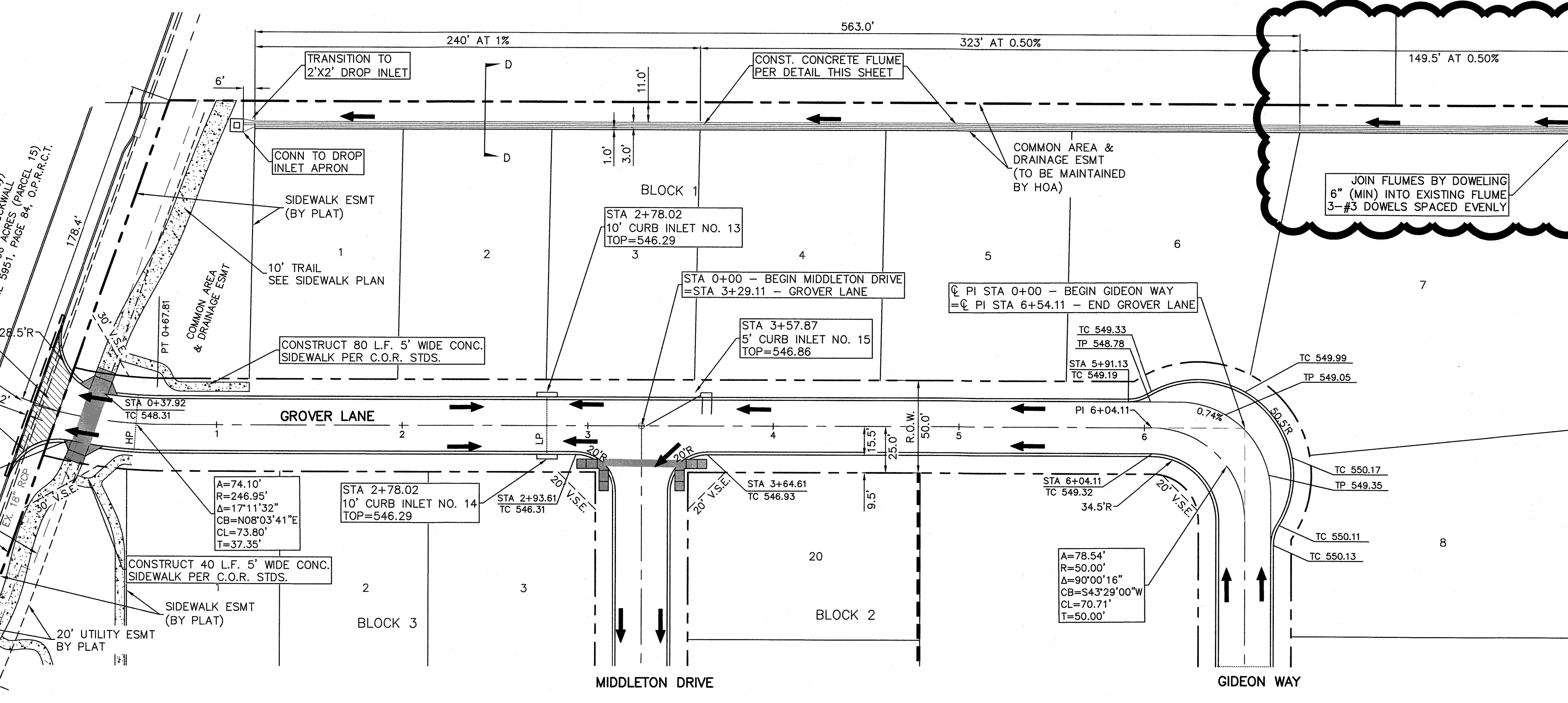
CONSTRUCT 80 L.F. 5' WIDE CONC. SIDEWALK PER C.O.R. STDS.

CONSTRUCT 40 L.F. 5' WIDE CONC. SIDEWALK PER C.O.R. STDS.

CONSTRUCT 80 L.F. 5' WIDE CONC. SIDEWALK PER C.O.R. STDS.

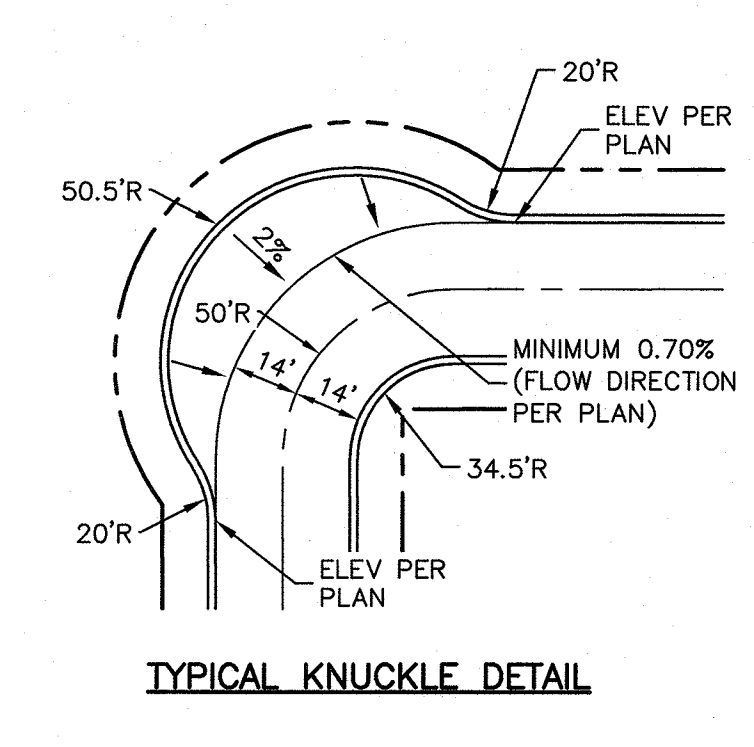
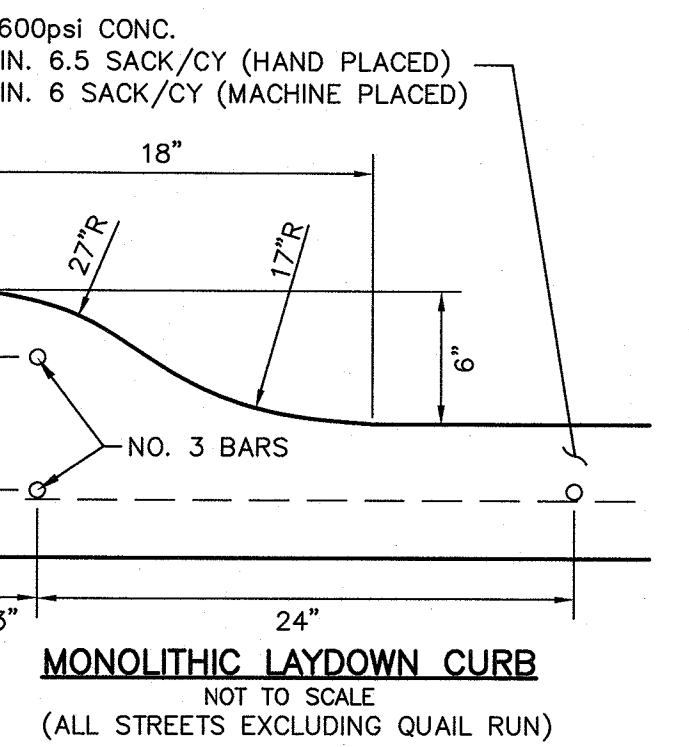
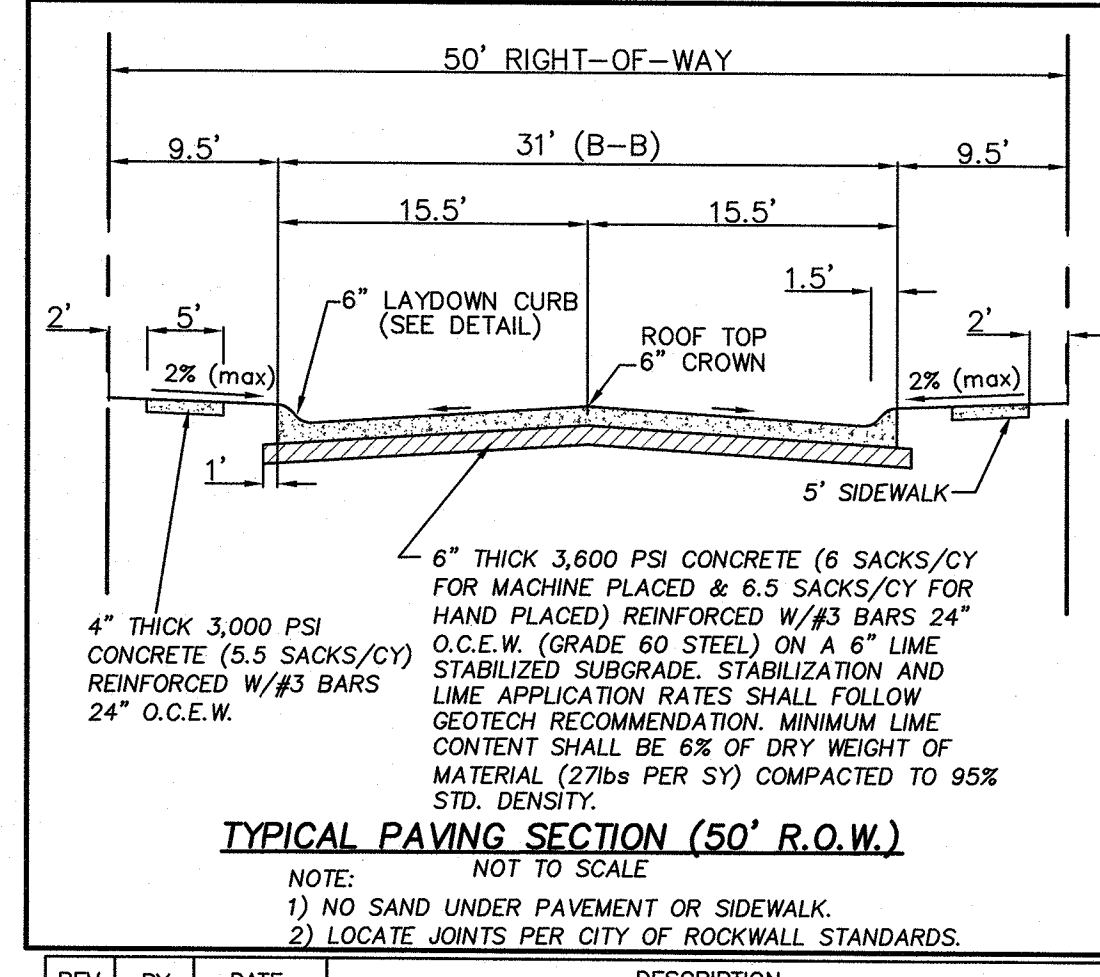
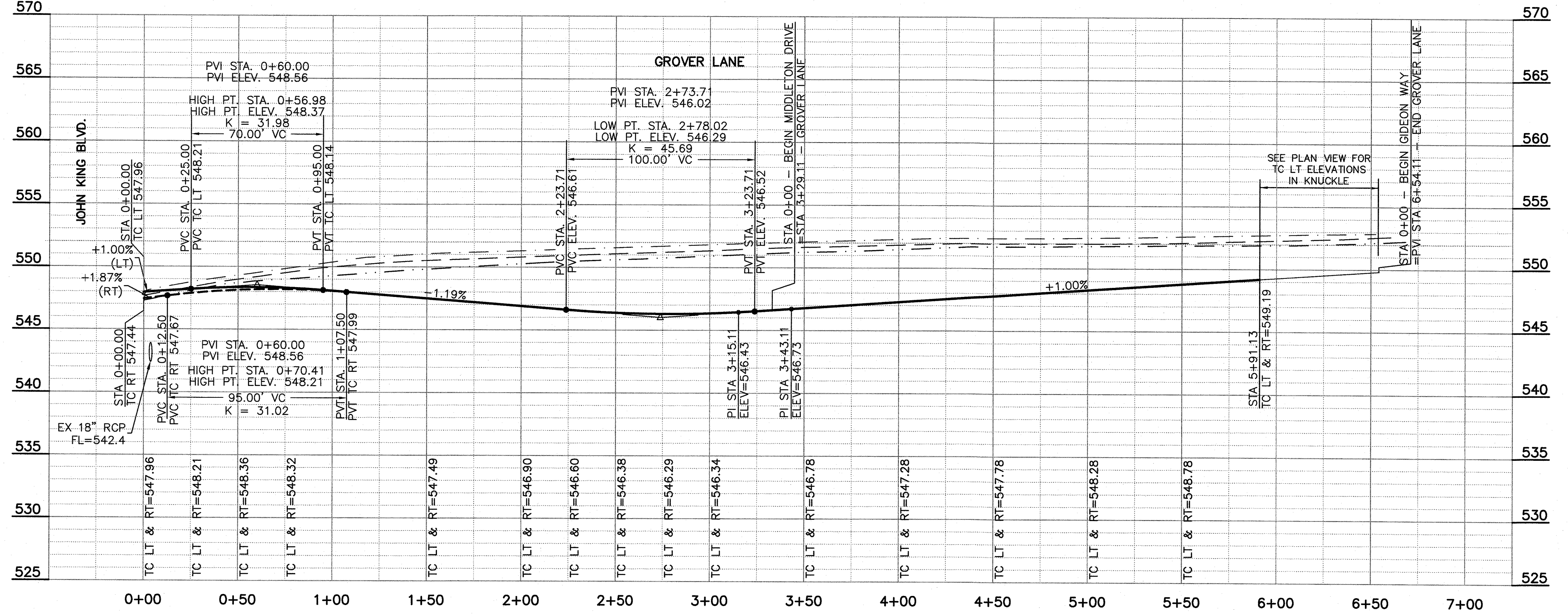
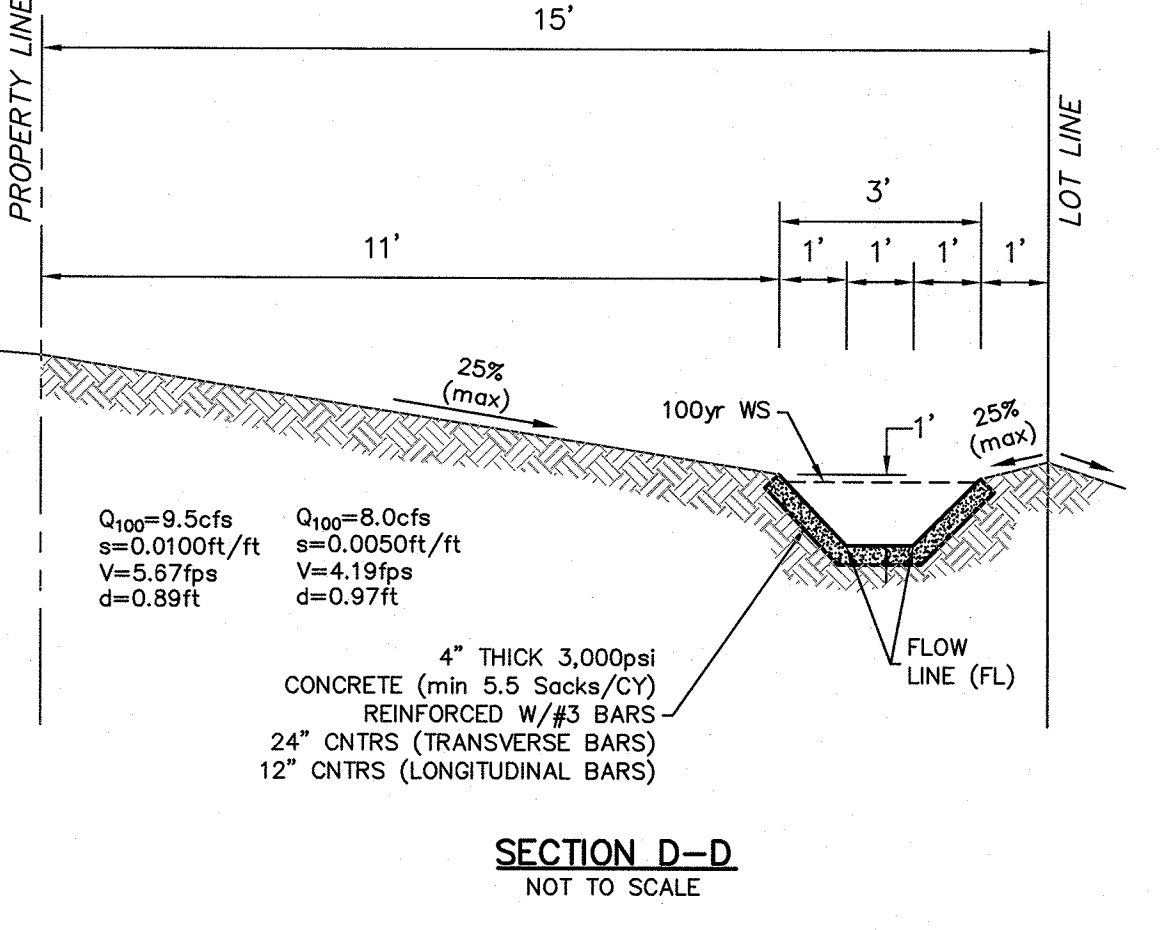
CONSTRUCT 40 L.F. 5' WIDE CONC. SIDEWALK PER C.O.R. STDS.

CONSTRUCT 80 L.F. 5' WIDE CONC. SIDEWALK PER C.O.R. STDS.



- GENERAL NOTES:
- 1) ALL CONSTRUCTION SHALL BE IN ACCORDANCE WITH THE CITY OF ROCKWALL STANDARDS.
 - 2) THE CONTRACTOR SHALL VERIFY THE HORIZONTAL AND VERTICAL LOCATIONS OF ALL EXISTING UTILITIES IN THE AREA OF CONSTRUCTION PRIOR TO BEGINNING CONSTRUCTION.
 - 3) THE CONTRACTOR SHALL NOTIFY ENGINEER OF RECORD OF ANY DISCREPANCIES BETWEEN THESE PLANS AND ACTUAL FIELD CONDITIONS.
 - 4) DIMENSIONS ARE TO BACK OF CURB, UNLESS OTHERWISE NOTED.

LEGEND		
C.O.R.	CITY OF ROCKWALL	TP TOP OF PAVEMENT
V.S.E.	VISIBILITY & SIDEWALK EASEMENT	VALLEY GUTTER
TC	TOP OF CURB	← DIRECTION OF FLOW
LP	LOW POINT	— CENTERLINE
HP	HIGH POINT	— ADA CROSSING (SEE ADA COMPLIANCE NOTE)
BFR	BARRIER FREE RAMP	— PROPOSED SIDEWALK (BY DEVELOPER, SEE SIDEWALK PLAN)
24.5'R	RADIUS	— BFR PER CITY OF ROCKWALL STD DETAIL R-2125A-D
PT	POINT OF CURVATURE	
PI	POINT OF TANGENCY	
PVI	POINT OF INTERSECTION	
CONST.	POINT OF VERTICAL INTERSECTION	
RT	RIGHT CENTERLINE	
LT	LEFT CENTERLINE	
GND	GROUND	
	PERPENDICULAR CURB RAMP PER STD DETAIL	
	PED-18	



PROFILE LEGEND	
---	EX. GND AT LT R.O.W.
---	EX. GND AT C.R.O.W.
---	EX. GND AT RT R.O.W.
---	PROP LT & RT TC
▨	COMPACTED FILL PER GEOTECH RECOMMENDATIONS, (MIN 95% STD. DENSITY)

ALL RESPONSIBILITY FOR ADEQUACY OF DESIGN REMAINS WITH THE DESIGN ENGINEER. THE CITY OF ROCKWALL, IN REVIEWING AND RELEASING PLANS FOR CONSTRUCTION, ASSUMES NO RESPONSIBILITY FOR ADEQUACY OR ACCURACY OF DESIGN.

DAYTON C. MACATEE
 REGISTERED PROFESSIONAL ENGINEER
 65028
 10/19/2020
 DAYTON MACATEE ENGINEERING, LLC
 TX. REG. NO. F-456

REV.	BY	DATE	DESCRIPTION
1	PJF	10/19/20	EXTENDED FLUME

BENCHMARKS

CITY OF ROCKWALL MONUMENT "COR-2"
 ALUMINUM DISK STAMPED "CITY OF ROCKWALL SURVEY MONUMENT" +/- .866' EAST OF INTERSECTION OF WILLIAMS STREET AND CARUTH LANE, AND 50' SOUTH OF CL OF WILLIAMS STREET. N: 7029731.124, E: 2598589.314, ELEV=529.10

CITY OF ROCKWALL MONUMENT "COR-4"
 ALUMINUM DISK STAMPED "CITY OF ROCKWALL SURVEY MONUMENT" ON NORTH SIDE OF DALTON ROAD +/- .210' WEST OF INTERSECTION OF SH 205 AND DALTON ROAD, AND 10' NORTH OF CURB LINE. N: 7040336.992, E: 2592422.633, ELEV=541.67

PAVING PLAN & PROFILE
GIDEON GROVE - NORTH
 CITY OF ROCKWALL, ROCKWALL COUNTY, TEXAS

MACATEE ENGINEERING
 DAYTON MACATEE ENGINEERING, LLC
 (Tex. Reg. No. F-456)
 3519 MILES STREET
 DALLAS, TEXAS 75209
 TEL 214-373-1180 • FAX 214-373-6580
 E-MAIL: daytonm@macatee-engineering.com

DESIGNED	CHECKED	DATE	DWG FILE	PROJECT #	SHEET NO.
PJF	DCM	10/19/2020	GG_PAV	SKR_GG	4 OF 29