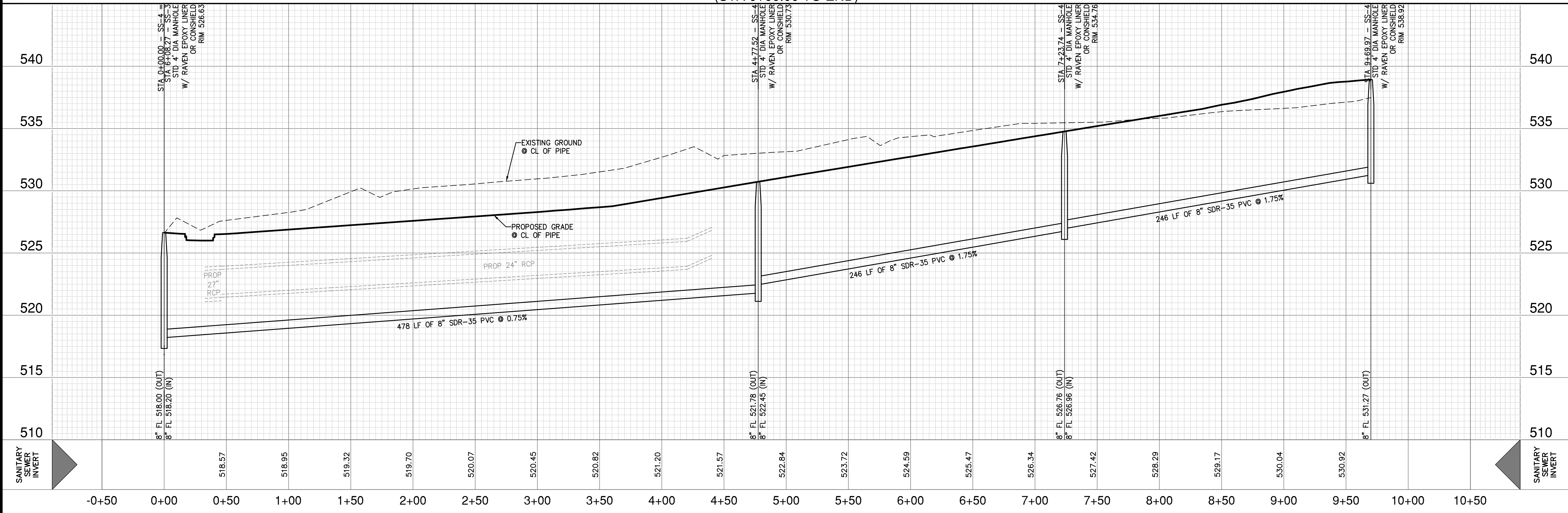


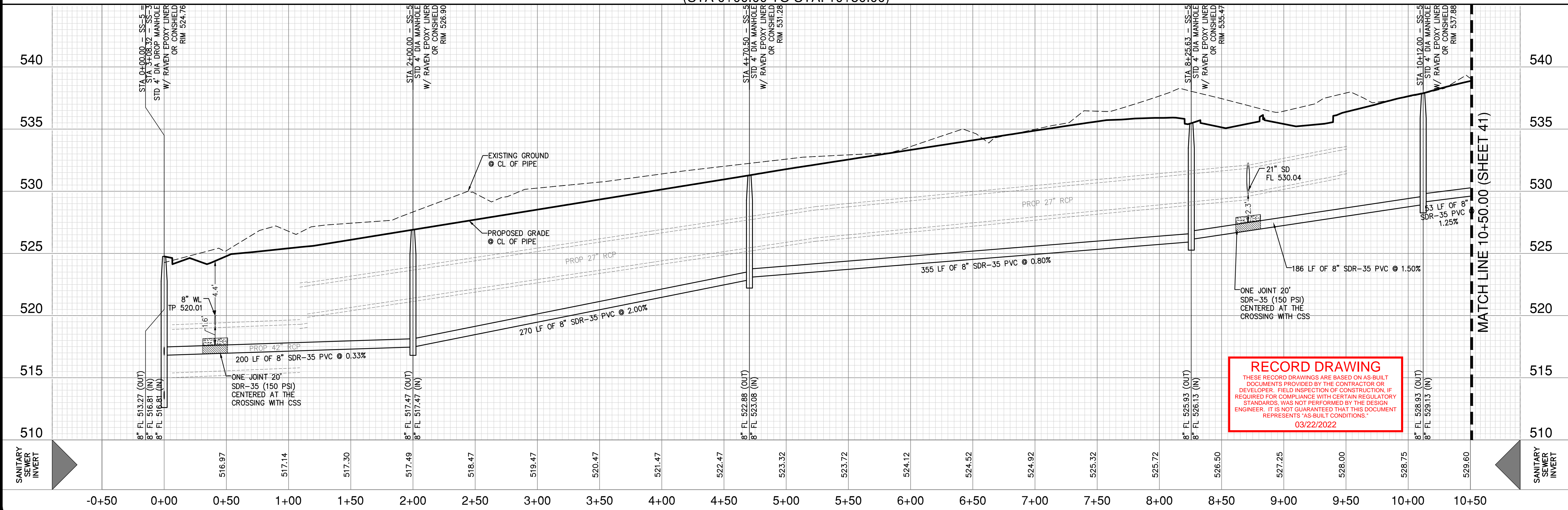
SANITARY SEWER LINE SS-4
(STA 0+00.00 TO END)

HORIZ. SCALE: 1" = 40'
VERT. SCALE: 1" = 4'



SANITARY SEWER LINE SS-5
(STA 0+00.00 TO STA. 10+50.00)

HORIZ. SCALE: 1" = 40'
VERT. SCALE: 1" = 4'



RECORD DRAWING
 THESE RECORD DRAWINGS ARE BASED ON AS-BUILT DOCUMENTS PROVIDED BY THE CONTRACTOR OR DEVELOPER. FIELD INSPECTION OF CONSTRUCTION OR REQUIRED FOR COMPLIANCE WITH CERTAIN REGULATORY STANDARDS WAS NOT PERFORMED BY THE DESIGN ENGINEER. IT IS NOT GUARANTEED THAT THIS DOCUMENT REPRESENTS AS-BUILT CONDITIONS.
 03/22/2022

DATE: _____

NO. _____

REVISION _____

STATE OF TEXAS
 ADAM S. REEVES
 98410
 LICENSED PROFESSIONAL ENGINEER
 6.8.2021

PAPE-DAWSON ENGINEERS
 FORT WORTH | SAN ANTONIO | AUSTIN | HOUSTON | DALLAS
 6500 W HWY. STE 700 | FT. WORTH, TX 76102 | 817.870.8668
 TEXAS BOARD OF PROFESSIONAL ENGINEERS: FIRM REGISTRATION #470

GIDEON GROVE - PHASE 2
 CITY OF ROCKWALL, ROCKWALL COUNTY, TEXAS

SANITARY SEWER PROFILES
 SS-4 & SS-5

PLAT NO.	#
JOB NO.	6126300
DATE	June 21
DESIGNER	
CHECKED	DRAWN
SHEET	40

Date: Jun 09, 2021, 5:59pm User: P.D. Lefebvre
 File: S:\projects\6126300\03\03\03\20_Rough\24_3_Raw_Sheets\SSPP-6126300.dwg

THIS DOCUMENT HAS BEEN PRODUCED FROM MATERIAL THAT WAS STORED AND/OR TRANSMITTED ELECTRONICALLY AND MAY HAVE BEEN INADVERTENTLY ALTERED. RELY ONLY ON FINAL HARD COPY MATERIALS BEARING THE CONSULTANT'S ORIGINAL SIGNATURE AND SEAL. ALIAS IMAGERY PROVIDED BY GOOGLE/© UNLESS OTHERWISE NOTED. Imagery © 2016, CAROL Digital Globe, Texas Orthology Program, USDA Farm Service Agency.