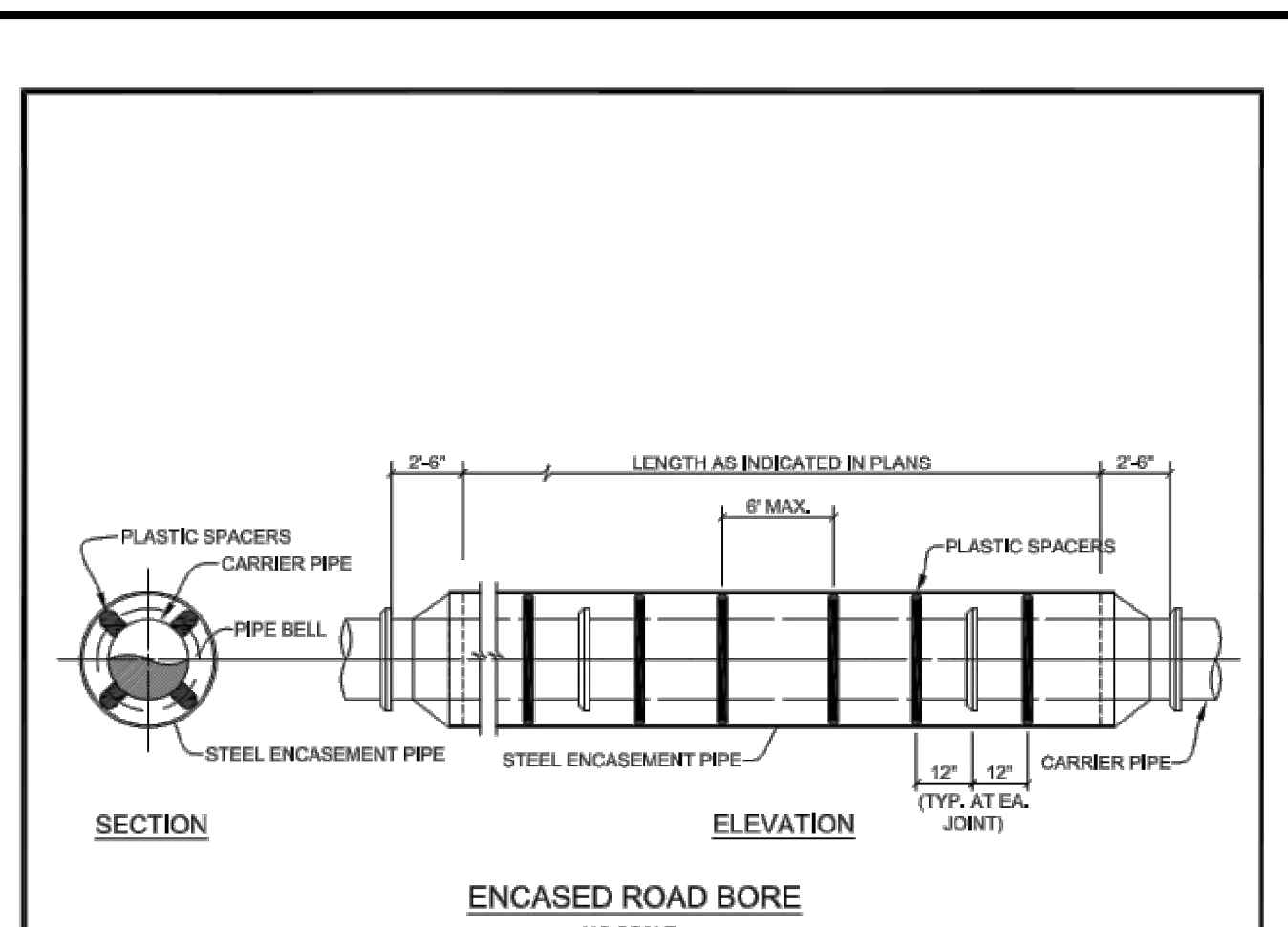


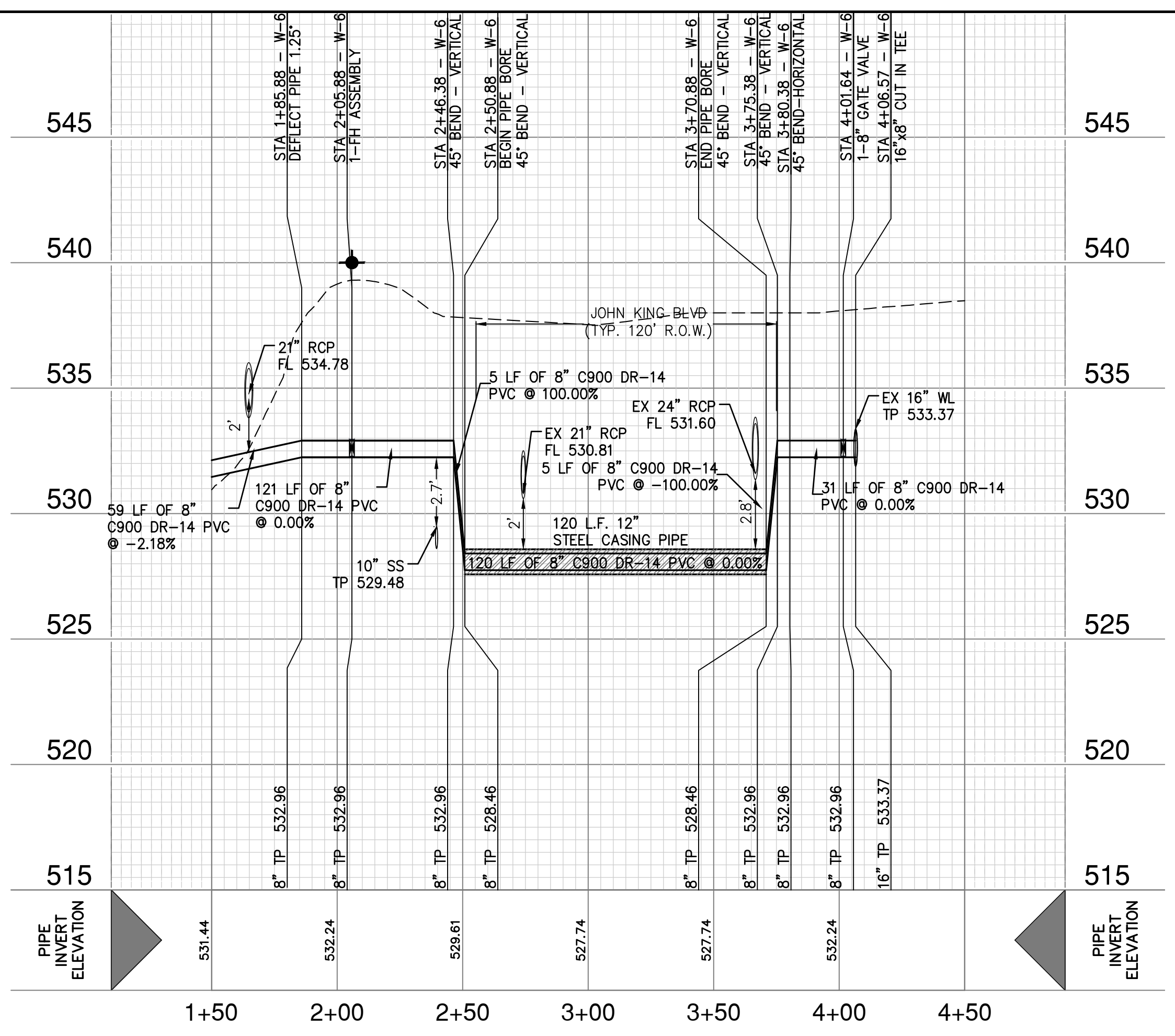
WATER LINE W-6
(STA 7+00.00 TO STA END)

HORIZ. SCALE: 1" = 40'
VERT. SCALE: 1" = 4'



- NOTES:**
- 1) ALL BORES BY CONTRACTOR SHALL BE DRY BORES.
 - 2) PREFABRICATED PLASTIC SPACERS SHALL BE RACI NORTH AMERICA OR APPROVED EQUAL, FOR THE SPECIFIC APPLICATION AS RECOMMENDED BY THE MANUFACTURER.
 - 3) CONTRACTOR SHALL PROVIDE SUPPORT UNDER CARRIER PIPE TO HAVE A MIN. 1" CLEARANCE BETWEEN PIPE BELL AND ENCASUREMENT PIPE.
 - 4) ENDS OF ENCASUREMENT PIPE SHALL HAVE END SEALS INSTALLED PER MANUFACTURER'S REQUIREMENTS. END SEALS SHALL BE CCI MODEL ESW WRAP-AROUND BY CCI PIPELINE SYSTEMS OR APPROVED EQUAL.
 - 5) THE DESIGN ENGINEER SHALL DESIGN THE MINIMUM THICKNESS OF THE ENCASUREMENT PIPE. DESIGN WILL NEED TO INCLUDE DEAD LOADING BASED ON THE HEIGHT OF COVER AND HS-20 LOADINGS FOR ROADWAY CROSSINGS AND E-90 LOADINGS FOR RAILROAD CROSSINGS.
 - 6) STEEL ENCASUREMENT PIPE SHALL CONFORM TO AWWA C200. PIPE SHALL BE FABRICATED IN ACCORDANCE WITH ASTM A670 FROM STEEL PLATES HAVING MINIMUM YIELD STRENGTH 36,300 PSI.
 - 7) STEEL ENCASUREMENT PIPE SHALL BE PAINTED INSIDE AND OUTSIDE WITH TWO COATS OF TMECOL, 110 TMECOL, SERIES 46-495 COAL TAR, OR CITY APPROVED EQUIVALENT PRIOR TO DELIVERY TO THE JOB SITE. MINIMUM COATING THICKNESS SHALL BE 12 MILS DRY FILM THICKNESS (DFT) PER EACH COAT.
 - 8) ENCASUREMENT PIPE SHALL BE FIELD WELDED IN ACCORDANCE WITH AWWA C200. WELDED JOINTS SHALL BE WIRE BRUSHED AND PAINTED WITH ONE COAT OF TMECOL, COMBIMANE SERIES 690, 22-418.5 DRY FILM THICKNESS (DFT) OR CITY APPROVED EQUIVALENT.

| | |
|---------------------|------------------|
| UNDERGROUND CONDUIT | CITY OF ROCKWALL |
| STEEL ENCASED BORE | |
| DATE | DRAWING NO. |
| OCT. '17 | R-3090 |



RECORD DRAWING
THESE RECORD DRAWINGS ARE BASED ON AS-BUILT DOCUMENTS PROVIDED BY THE CONTRACTOR OR DEVELOPER. FIELD INSPECTION OF CONSTRUCTION, IF REQUIRED FOR COMPLIANCE WITH CERTAIN REGULATORY STANDARDS, WAS NOT PERFORMED BY THE DESIGN ENGINEER. IT IS NOT GUARANTEED THAT THIS DOCUMENT REPRESENTS "AS-BUILT" CONDITIONS.
03/22/2022

- NOTES**
1. CONTRACTOR SHALL PROTECT ALL EXISTING TREES, FENCES, RETAINING WALLS AND STRUCTURES UNLESS OTHERWISE NOTED.
 2. FIRE HYDRANT ASSEMBLY TO INCLUDE 1-8"x6" TEE, 1-6" 90° HORIZONTAL BEND, 1-6" VALVE, AND 1-FIRE HYDRANT.
- UTILITY NOTE**
- THE EXISTING UTILITIES SHOWN ON THESE PLANS WERE COMPILED FROM VARIOUS SOURCES AND ARE INTENDED TO SHOW THE GENERAL EXISTENCE AND LOCATION OF THE UTILITY INFORMATION ON THE PLANS. THE CONTRACTOR SHALL CONTACT A UTILITY LOCATING SERVICE 48 HOURS PRIOR TO ANY CONSTRUCTION ACTIVITY. THE CONTRACTOR SHALL VERIFY THE EXACT LOCATION AND OF ALL EXISTING UTILITIES AND DETERMINE IF THERE ARE ANY CONFLICTS WITH THE PROPOSED FACILITIES. THE CONTRACTOR SHALL NOTIFY THE ENGINEER IMMEDIATELY WHEN CONFLICTS WITH EXISTING UTILITIES ARE DISCOVERED.
- RESPONSIBILITY NOTE**
- ALL RESPONSIBILITY FOR THE ADEQUACY OF DESIGN REMAINS WITH THE DESIGN ENGINEER. THE CITY OF ROCKWALL, IN REVIEWING AND RELEASING PLANS FOR CONSTRUCTION, ASSUMES NO RESPONSIBILITY FOR THE ADEQUACY OR ACCURACY OF DESIGN.

GIDEON GROVE - PHASE 2
CITY OF ROCKWALL, ROCKWALL COUNTY, TEXAS
WATER LINE W-6
PLAN AND PROFILE

| | |
|----------|---------|
| PLAT NO. | # |
| JOB NO. | 6126300 |
| DATE | June 21 |
| DESIGNER | |
| CHECKED | DRAWN |
| SHEET | 36 |



PAPE-DAWSON ENGINEERS
FORT WORTH | SAN ANTONIO | AUSTIN | HOUSTON | DALLAS
6500 W HWY. STE 700 | FT. WORTH, TX 76102 | 817.870.8868
TEXAS BOARD OF PROFESSIONAL ENGINEERS, FIRM REGISTRATION #470

Date: Jun 08, 2021, 8:57:27am, User: P.D., L:\Projects\2021\210626\Grove\DWG\210626_02.dwg, Plot: S:\projects\2021\210626\Grove\210626_02.dwg, PLOT: 2.4.3, Plot Sheets: W:\P\210626_02.dwg

THIS DOCUMENT HAS BEEN PRODUCED FROM MATERIAL THAT WAS STORED AND/OR TRANSMITTED ELECTRONICALLY AND MAY HAVE BEEN INADVERTENTLY ALTERED. RELY ONLY ON FINAL HARDCOPY MATERIALS BEARING THE CONSULTANT'S ORIGINAL SIGNATURE AND SEAL. AERIAL IMAGERY PROVIDED BY GOOGLE/UNLESS OTHERWISE NOTED. Imagery © 2016, CAROL/Digital Globe, Texas Orthographic Program, USDA Farm Service Agency.