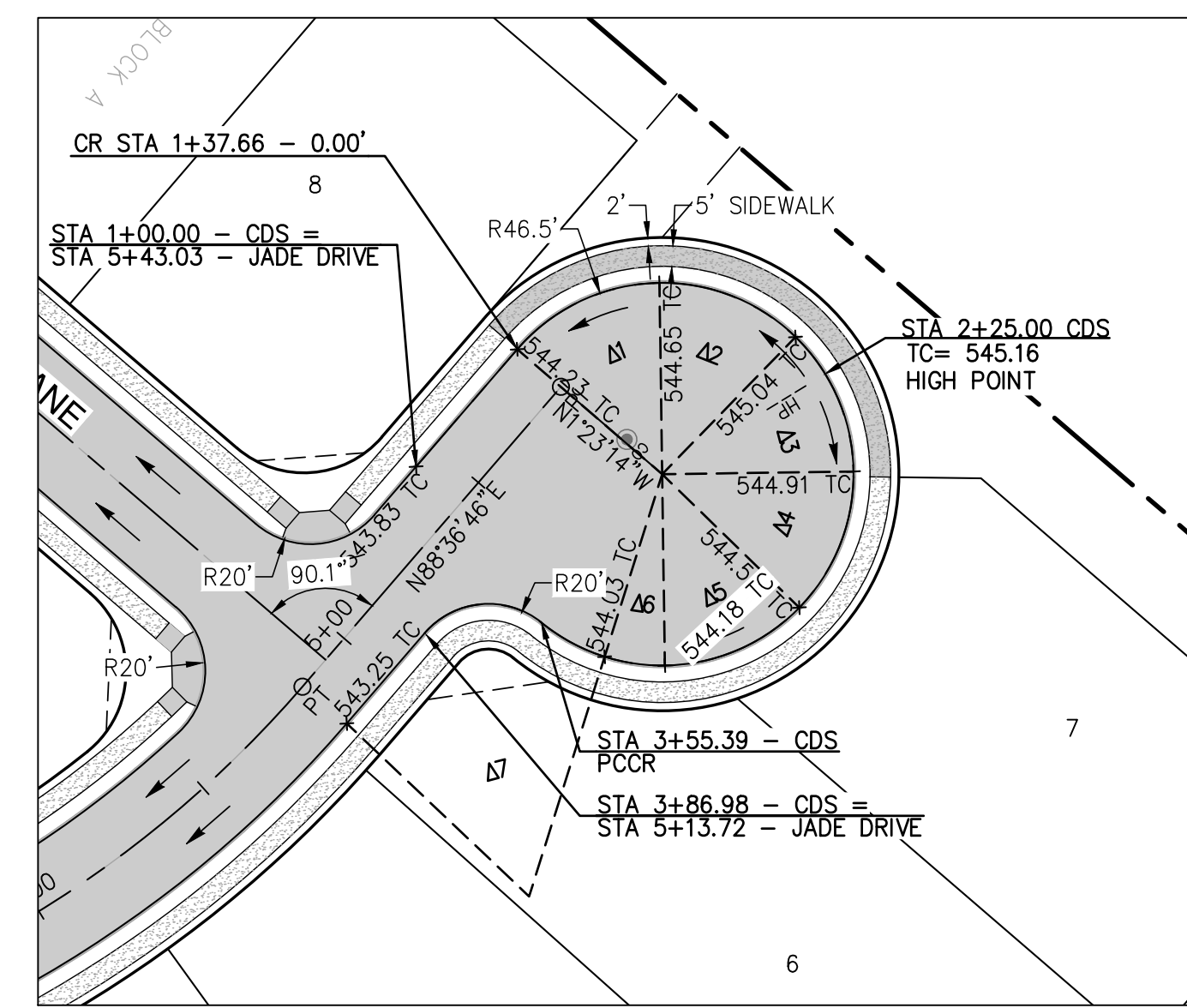
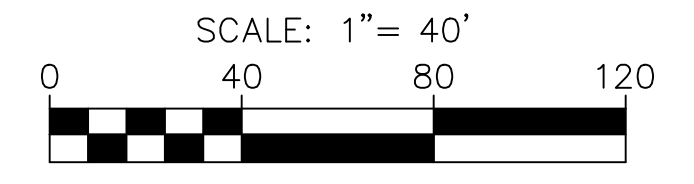


JADE DRIVE
(STA 1+00.00 TO END)



JADE DRIVE CDS
(STA 1+00.00 TO END)

DELTA #	DELTA ANGLE
Δ1	48°25'36"
Δ2	45°00'00"
Δ3	45°00'00"
Δ4	45°00'00"
Δ5	45°00'00"
Δ6	181°7'50"
Δ7	64°00'22"



STREET LEGEND

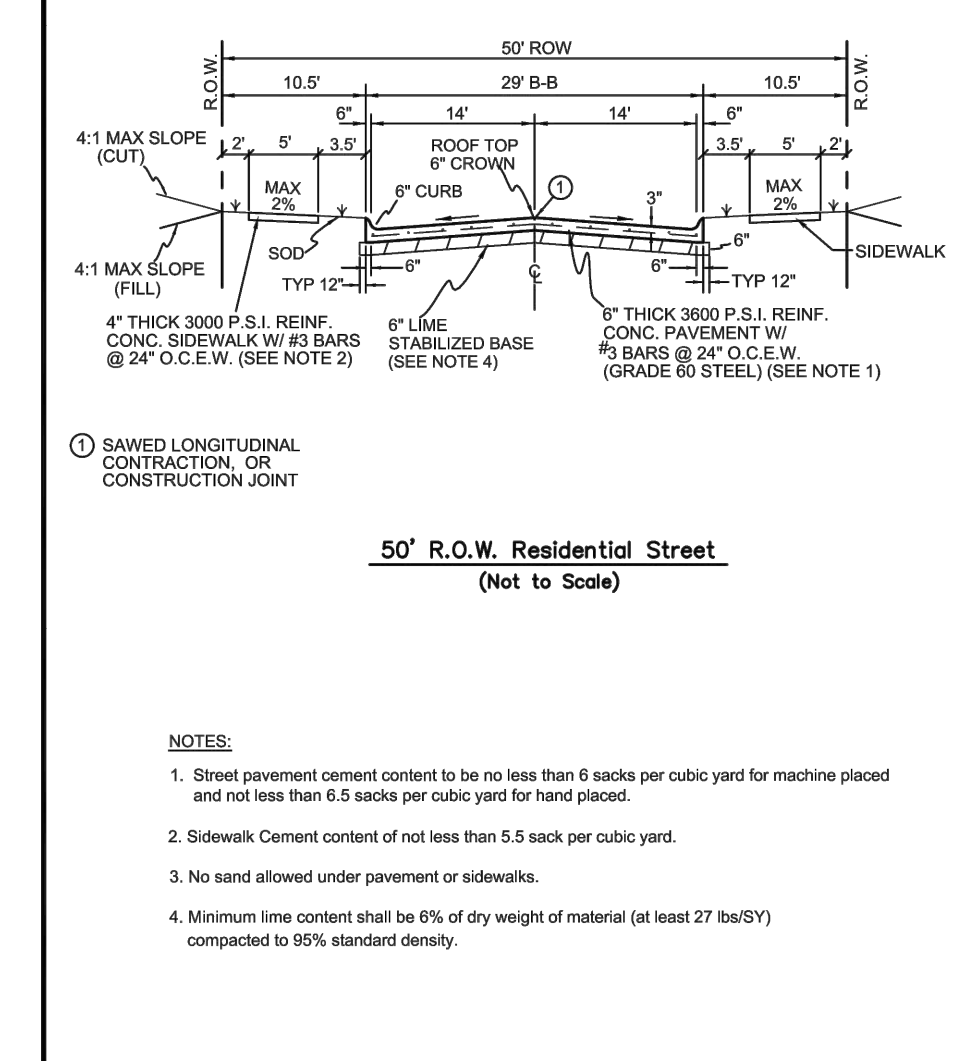
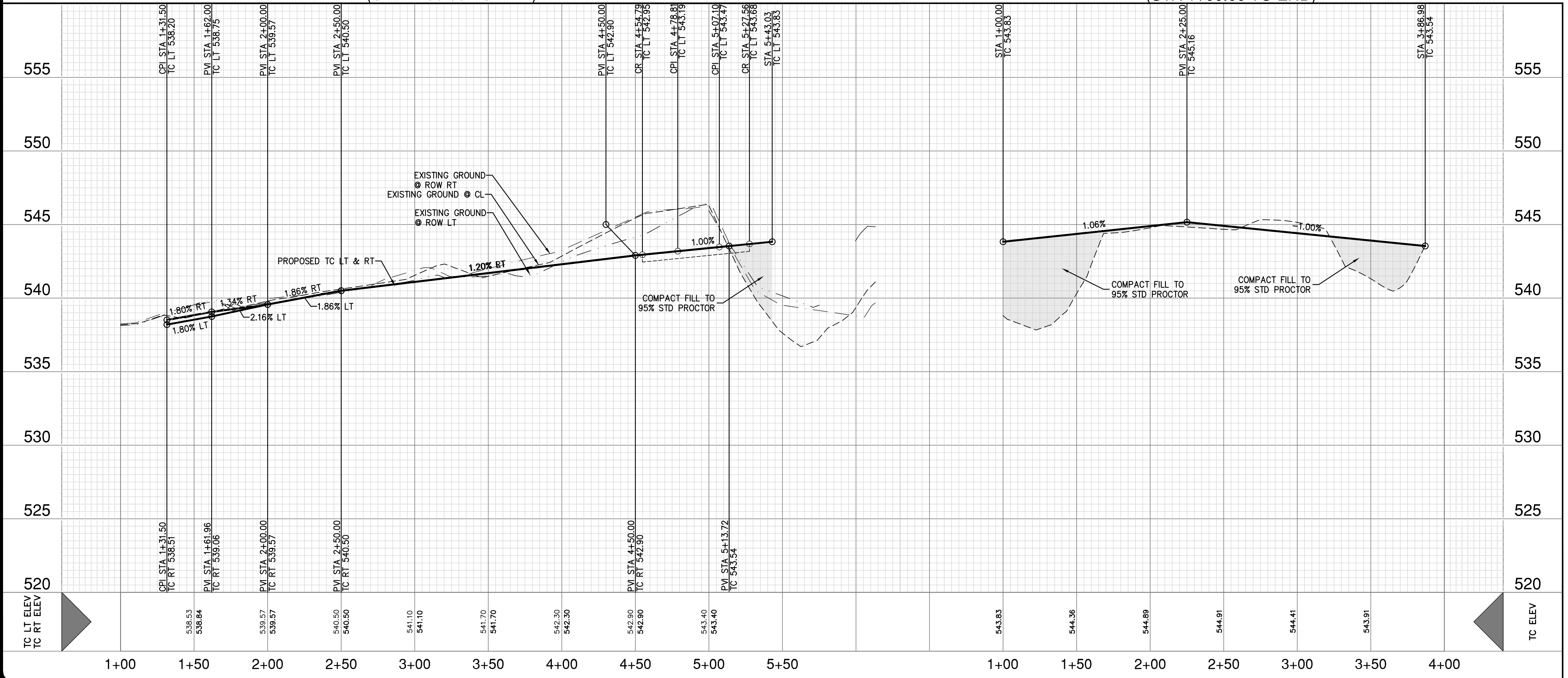
- PROPOSED PAVEMENT (REFERENCE TYPICAL STREET SECTION FOR SPECIFICATION)
6" THICK 3600 PSI (6.5 SACK MIX)
#3 BARS @ 24" O.C.E.W.
- PROPOSED CONCRETE SIDEWALK BY DEVELOPER (THIS CONTRACT)
4" THICK 3000 PSI (5.5 SACK MIX)
#3 BARS @ 24" O.C.E.W.
- PROPOSED CONCRETE SIDEWALK BY HOMEBUILDER (NOT IN THIS CONTRACT)
- DIRECTIONAL CURB RAMP PER CITY OF ROCKWALL DETAIL R-2125A (THIS CONTRACT)

CENTERLINE CURVE DATA								
CURVE	RADIUS	DELTA	TANGENT	LENGTH	CHORD BEARING	CHORD LENGTH	PC	PT
C1	275.00'	49.23'	126.00'	236.31'	N66°46'13.21"W	229.10'	2+48.17	4+84.48

JADE DRIVE CDS
(STA 1+00.00 TO END)

HORIZ. SCALE: 1" = 40'
VERT. SCALE: 1" = 4'

RECORD DRAWING
THESE RECORD DRAWINGS ARE BASED ON AS-BUILT DOCUMENTS PROVIDED BY THE CONTRACTOR OR DEVELOPER. FIELD INSPECTION OF CONSTRUCTION, IF REQUIRED FOR COMPLIANCE WITH CERTAIN REGULATORY STANDARDS, WAS NOT PERFORMED BY THE DESIGN ENGINEER. IT IS NOT GUARANTEED THAT THIS DOCUMENT REPRESENTS AS-BUILT CONDITIONS.
03/22/2022



REINFORCED CONCRETE PAVEMENT	CITY OF ROCKWALL
LOCAL RESIDENTIAL STREET	

- NOTES**
- ALL EXISTING UTILITY LOCATIONS ARE APPROXIMATE AND WILL BE CONFIRMED BY CONTRACTOR PRIOR TO CONSTRUCTION.
 - CONTRACTOR SHALL PROTECT ALL EXISTING TREES, FENCES, RETAINING WALLS AND STRUCTURES UNLESS OTHERWISE NOTED.
 - ALL CURB RADI SHALL BE TO BACK OF CURB AS FOLLOWS:
(UNLESS OTHERWISE NOTED).
E. QUAIL RUN ROAD = 30.5'
INTERIOR INTERSECTIONS = 20.5'
 - DETENTION SYSTEM MUST BE FUNCTIONAL, WITH EROSION PROTECTION ON SIDES AND BOTTOM PRIOR TO ANY PAVING OPERATIONS (INCLUDING SLAB).
 - 10' PAVEMENT FOR ARTERIAL TO GO TO CURB RETURN OF EACH SIDE STREET (GEM DRIVE, JADE DRIVE, SAPPHIRE ROAD AND PEBBLE LANE).
 - END 10' PAVEMENT ON E QUAIL RUN ROAD AND BEGIN 6" PAVEMENT ON RESIDENTIAL STREET.
- UTILITY NOTE**
- THE EXISTING UTILITIES SHOWN ON THESE PLANS WERE COMPILED FROM VARIOUS SOURCES AND ARE INTENDED TO SHOW THE GENERAL EXISTENCE AND LOCATION OF THE UTILITY INFORMATION ON THE PLANS. THE CONTRACTOR SHALL CONTACT A UTILITY LOCATING SERVICE 48 HOURS PRIOR TO ANY CONSTRUCTION ACTIVITY. THE CONTRACTOR SHALL VERIFY THE EXACT LOCATION AND OF ALL EXISTING UTILITIES AND DETERMINE IF THERE ARE ANY CONFLICTS WITH THE PROPOSED FACILITIES. THE CONTRACTOR SHALL NOTIFY THE ENGINEER IMMEDIATELY WHEN CONFLICTS WITH EXISTING UTILITIES ARE DISCOVERED.
- RESPONSIBILITY NOTE**
- ALL RESPONSIBILITY FOR THE ADEQUACY OF DESIGN REMAINS WITH THE DESIGN ENGINEER. THE CITY OF ROCKWALL, IN REVIEWING AND RELEASING PLANS FOR CONSTRUCTION, ASSUMES NO RESPONSIBILITY FOR THE ADEQUACY OR ACCURACY OF DESIGN.

DATE: _____

NO. _____

REVISION _____

PAPE-PAWSON ENGINEERS
FORT WORTH | SAN ANTONIO | AUSTIN | HOUSTON | DALLAS
6500 W HWY. STE 700 | FT. WORTH, TX 76102 | 817.870.8868
TEXAS BOARD OF PROFESSIONAL ENGINEERS, FIRM REGISTRATION #470

GIDEON GROVE - PHASE 2
CITY OF ROCKWALL, ROCKWALL COUNTY, TEXAS

**JADE DRIVE
PLAN & PROFILE**

PLAT NO. _____

JOB NO. 6126300

DATE June 21

DESIGNER RI

CHECKED ASR DRAWN TB

SHEET 29

DATE: JUN 08 2021 8:56am User: P.D. Lefevre
FILE: S:\projects\GIDEON GROVE\2.0 Design\2.4 Civil\2.4.3 Plan Sheets\STEP-2-F-6126300.dwg

THIS DOCUMENT HAS BEEN PRODUCED FROM MATERIAL THAT WAS STORED AND/OR TRANSMITTED ELECTRONICALLY AND MAY HAVE BEEN INADVERTENTLY ALTERED. RELY ONLY ON FINAL HARDCOPY MATERIALS BEARING THE CONSULTANT'S ORIGINAL SIGNATURE AND SEAL. IMAGERY PROVIDED BY GOOGLE/UNLESS OTHERWISE NOTED. Imagery © 2016, CAROL Digital Globe, Texas Orthographic Program, USDA Farm Service Agency.