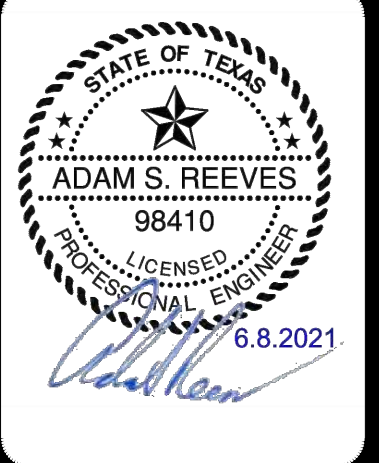


DATE	
NO.	REVISION

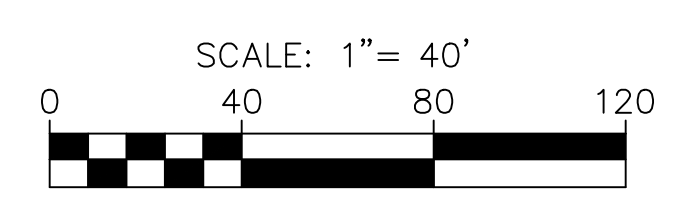
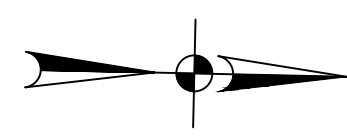


**PAPE-DAWSON ENGINEERS**  
 PORT WORTH | SAN ANTONIO | AUSTIN | HOUSTON | DALLAS  
 6500 W HWY. STE 700 | FT. WORTH, TX 76102 | 817.870.8868  
 TEXAS BOARD OF PROFESSIONAL ENGINEERS, FIRM REGISTRATION #470

**GIDEON GROVE - PHASE 2**  
 CITY OF ROCKWALL, ROCKWALL COUNTY, TEXAS  
**GEM DRIVE**  
 PLAN & PROFILE

PLAT NO.	#
JOB NO.	6126300
DATE	June 21
DESIGNER	Ri
CHECKED	ASR DRAWN ML
SHEET	26

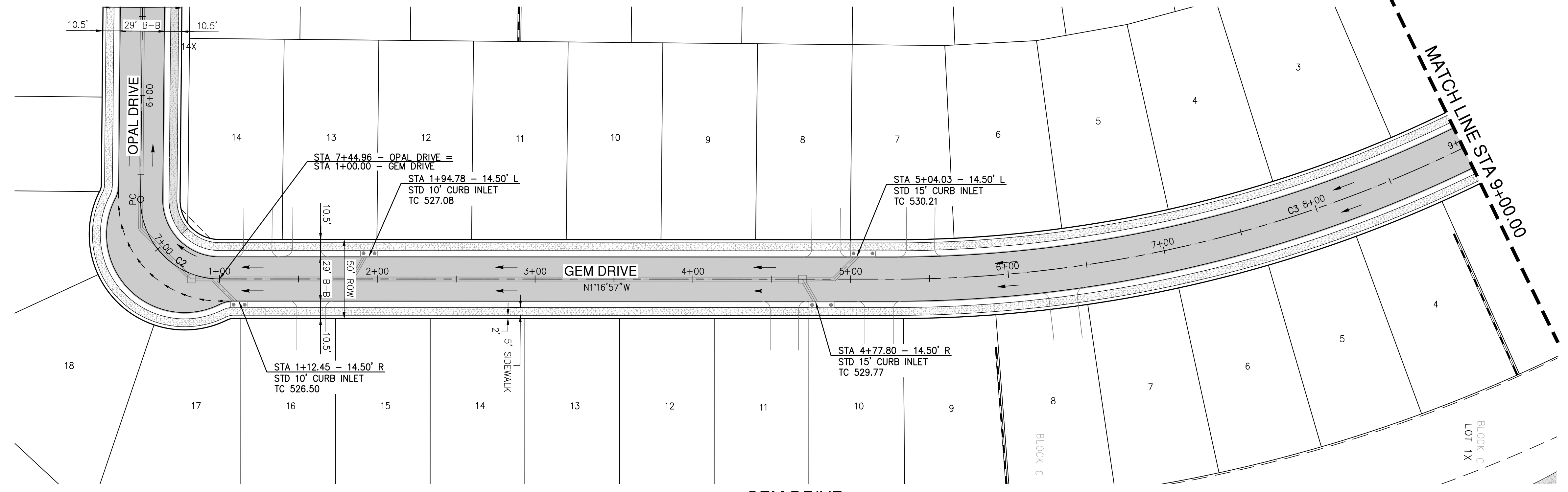
CENTERLINE CURVE DATA								
CURVE	RADIUS	DELTA	TANGENT	LENGTH	CHORD BEARING	CHORD LENGTH	PC	PT
C2	50.00'	90.52'	50.46'	79.00'	N43°58'46.42"E	71.03'	6+65.96	7+44.96
C3	825.00'	40.45'	303.96'	582.46'	N21°30'29.47"W	570.44'	5+26.85	11+09.31



**STREET LEGEND**

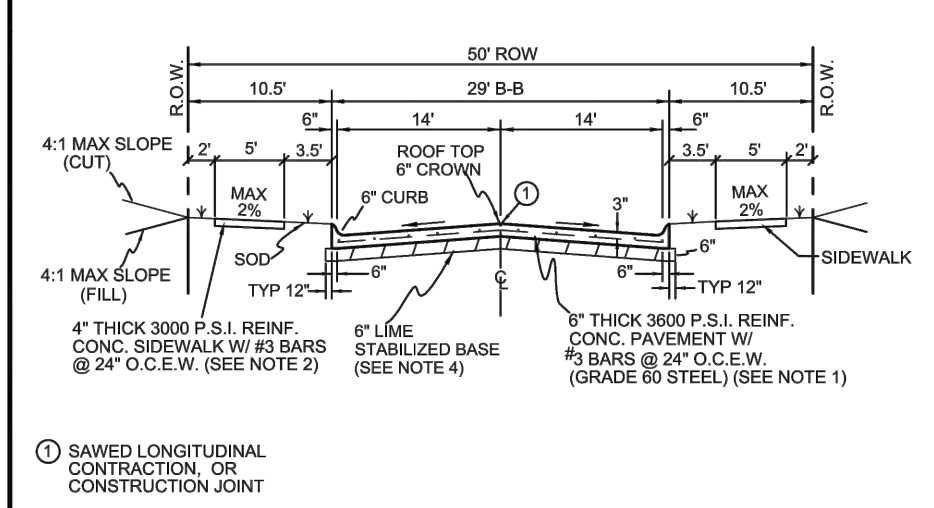
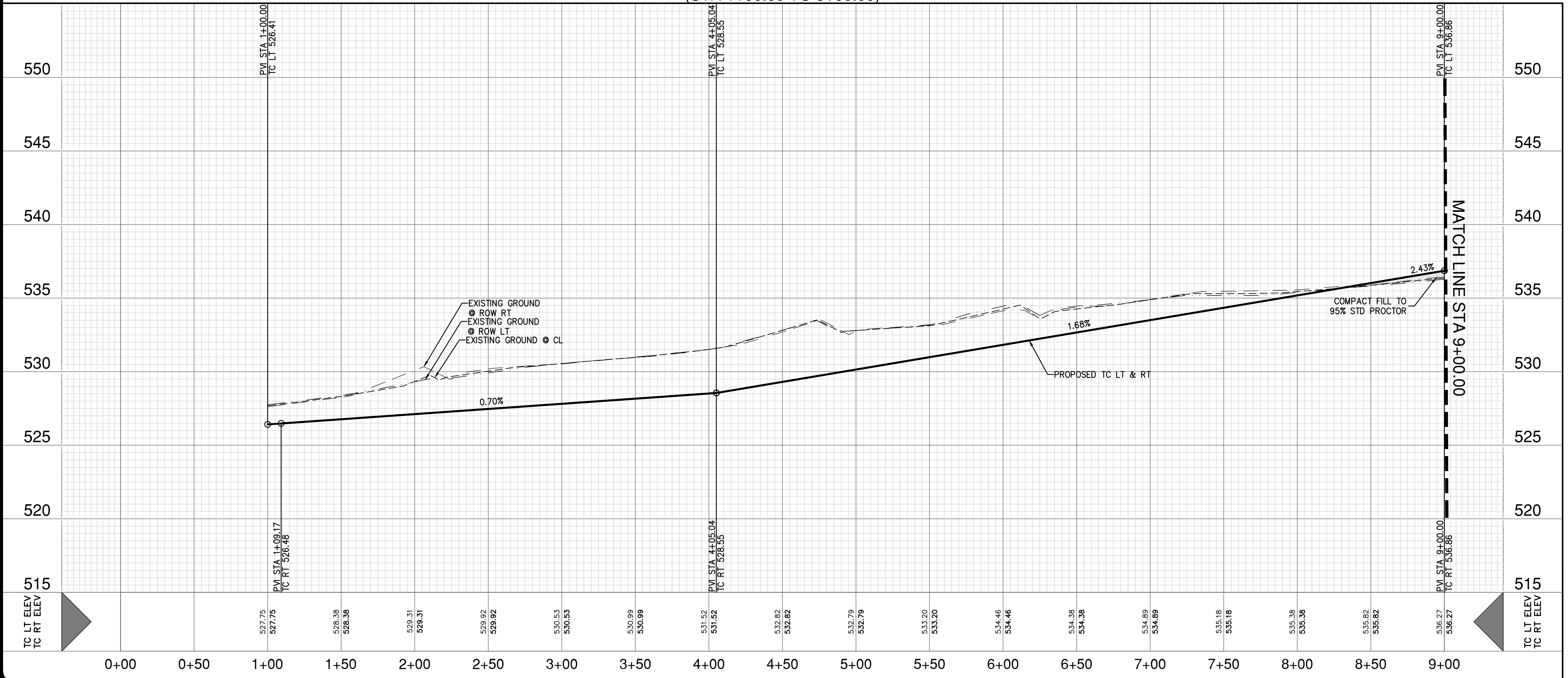
- PROPOSED PAVEMENT (REFERENCE TYPICAL STREET SECTION FOR SPECIFICATION)  
6" THICK 3600 PSI (6.5 SACK MIX) #3 BARS @ 24" O.C.E.W.
- PROPOSED CONCRETE SIDEWALK BY DEVELOPER (THIS CONTRACT)  
4" THICK 3000 PSI (5.5 SACK MIX) #3 BARS @ 24" O.C.E.W.
- PROPOSED CONCRETE SIDEWALK BY HOMEBUILDER (NOT IN THIS CONTRACT)
- DIRECTIONAL CURB RAMP PER CITY OF ROCKWALL DETAIL R-2125A (THIS CONTRACT)

**RECORD DRAWING**  
 THESE RECORD DRAWINGS ARE BASED ON AS-BUILT DOCUMENTS PROVIDED BY THE CONTRACTOR OR DEVELOPER. FIELD INSPECTION OF CONSTRUCTION IS REQUIRED FOR COMPLIANCE WITH CERTAIN REGULATORY STANDARDS. WAS NOT PERFORMED BY THE DESIGN ENGINEER. IT IS NOT GUARANTEED THAT THIS DOCUMENT REPRESENTS 'AS-BUILT CONDITIONS.'  
 03/22/2022



**GEM DRIVE**  
(STA 1+00.00 TO 9+00.00)

HORIZ. SCALE: 1" = 40'  
 VERT. SCALE: 1" = 4'



REINFORCED CONCRETE PAVEMENT	CITY OF ROCKWALL
LOCAL RESIDENTIAL STREET	

DATE: 6/19/19 DRAWING NO: R-20333

- NOTES**
- ALL EXISTING UTILITY LOCATIONS ARE APPROXIMATE AND WILL BE CONFIRMED BY CONTRACTOR PRIOR TO CONSTRUCTION.
  - CONTRACTOR SHALL PROTECT ALL EXISTING TREES, FENCES, RETAINING WALLS AND STRUCTURES UNLESS OTHERWISE NOTED.
  - ALL CURB RADI SHALL BE TO BACK OF CURB AS FOLLOWS:  
 E. QUAIL RUN ROAD = 30.5'  
 INTERIOR INTERSECTIONS = 20.5'  
 DETENTION SYSTEM MUST BE FUNCTIONAL, WITH EROSION PROTECTION ON SIDES AND BOTTOM PRIOR TO ANY PAVING OPERATIONS (INCLUDING SLAB).
- UTILITY NOTE**
- THE EXISTING UTILITIES SHOWN ON THESE PLANS WERE COMPILED FROM VARIOUS SOURCES AND ARE INTENDED TO SHOW THE GENERAL EXISTENCE AND LOCATION OF THE UTILITY INFORMATION ON THE PLANS. THE CONTRACTOR SHALL CONTACT A UTILITY LOCATING SERVICE 48 HOURS PRIOR TO ANY CONSTRUCTION ACTIVITY. THE CONTRACTOR SHALL VERIFY THE EXACT LOCATION AND OF ALL EXISTING UTILITIES AND DETERMINE IF THERE ARE ANY CONFLICTS WITH THE PROPOSED FACILITIES. THE CONTRACTOR SHALL NOTIFY THE ENGINEER IMMEDIATELY WHEN CONFLICTS WITH EXISTING UTILITIES ARE DISCOVERED.
- RESPONSIBILITY NOTE**
- ALL RESPONSIBILITY FOR THE ADEQUACY OF DESIGN REMAINS WITH THE DESIGN ENGINEER. THE CITY OF ROCKWALL, IN REVIEWING AND RELEASING PLANS FOR CONSTRUCTION, ASSUMES NO RESPONSIBILITY FOR THE ADEQUACY OR ACCURACY OF DESIGN.

Date: Jun 09, 2021, 8:56am User: P:\Engineering\Plan Sheets\GEM DRIVE-6126300.dwg  
 Plot: S:\projects\6126300\03\20\Design\21\GEM Drive.dwg  
 This document has been produced from material that was stored and/or transmitted electronically and may have been inadvertently altered. Rely only on final hardcopy materials bearing the consultant's original signature and seal. Aerial imagery provided by Google© unless otherwise noted. Imagery © 2016, CAROL Digital Globe, Texas Orthographic Program, USDA Farm Service Agency.