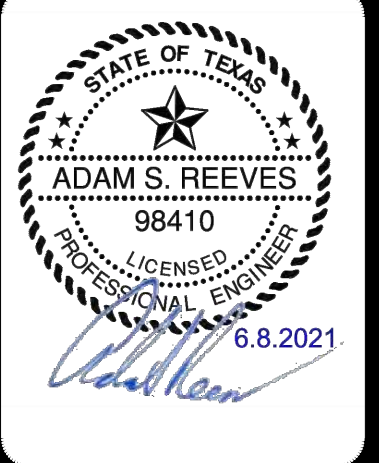


DATE	
NO.	REVISION

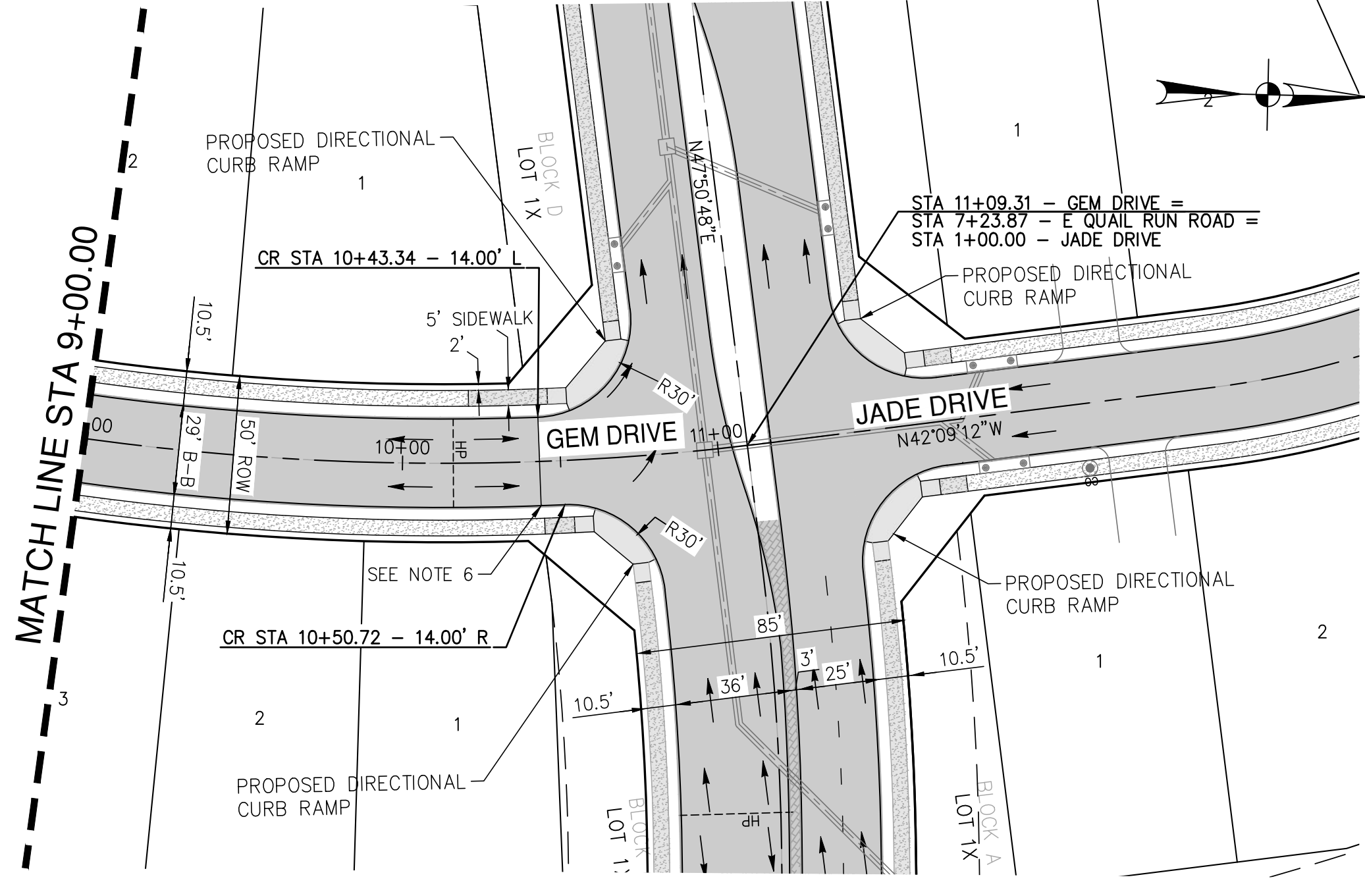


PAPE-DAWSON ENGINEERS
 PORT WORTH | SAN ANTONIO | AUSTIN | HOUSTON | DALLAS
 6500 W HWY. STE 700 | FT. WORTH, TX 76102 | 817.870.8868
 TEXAS BOARD OF PROFESSIONAL ENGINEERS, FIRM REGISTRATION #470

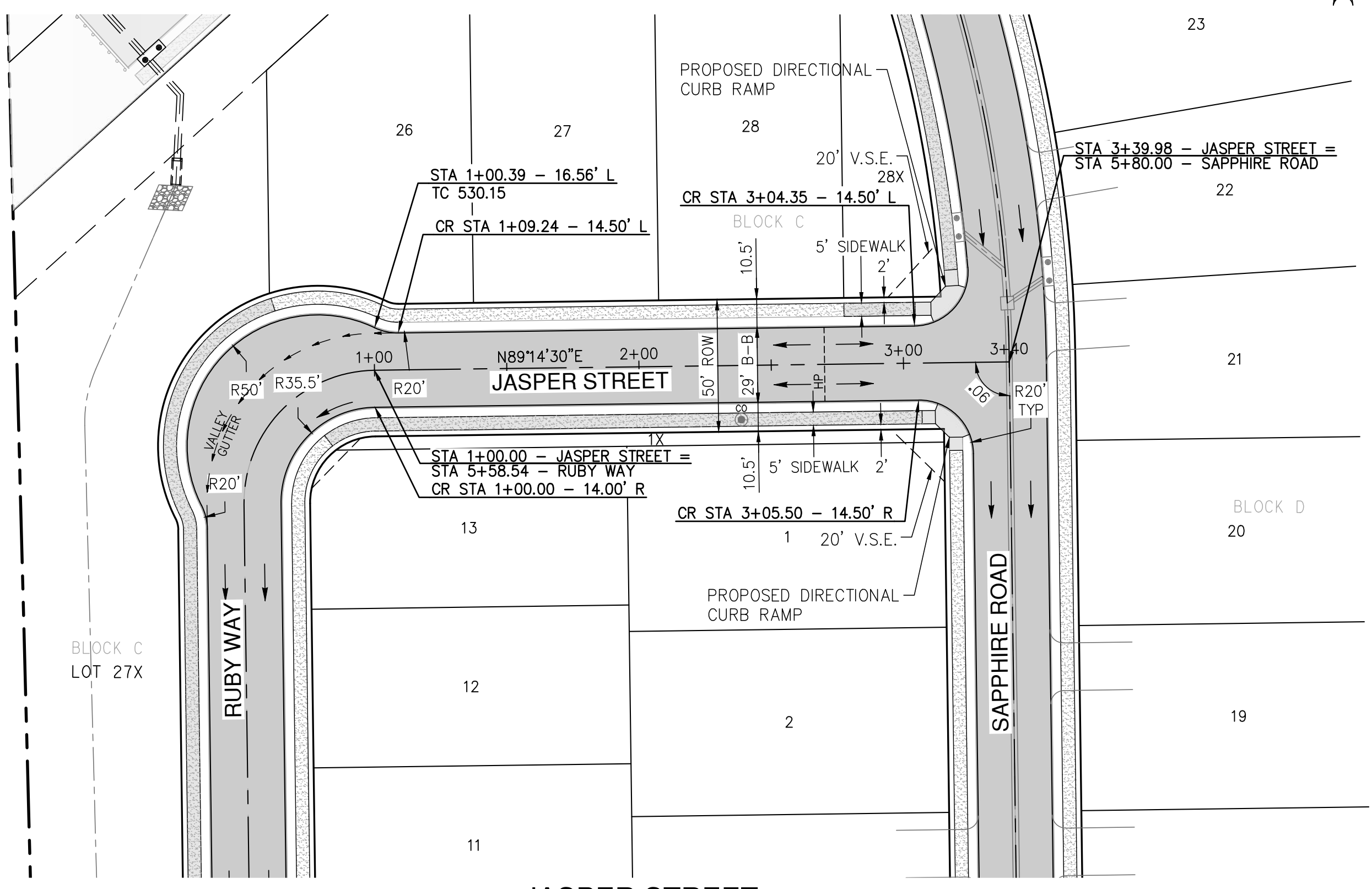
GIDEON GROVE - PHASE 2
 CITY OF ROCKWALL, ROCKWALL COUNTY, TEXAS
 GEM DRIVE & JASPER STREET
 PLAN AND PROFILE

PLAT NO.	#
JOB NO.	6126300
DATE	June 21
DESIGNER	Ri
CHECKED	ASR DRAWN ML
SHEET	27

CURVE	RADIUS	DELTA	TANGENT	LENGTH	CHORD BEARING	CHORD LENGTH	PC	PT
C2	50.00'	90.52'	50.46'	79.00'	N43°58'46.42"E	71.03'	6+65.96	7+44.96
C3	825.00'	40.45'	303.96'	582.46'	N21°30'29.47"W	570.44'	5+26.85	11+09.31

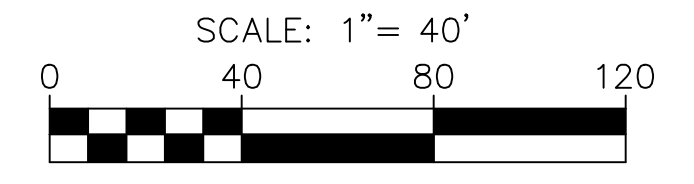


**GEM DRIVE
(STA 9+00.00 TO END)**



**JASPER STREET
(STA 1+00.00 TO END)**

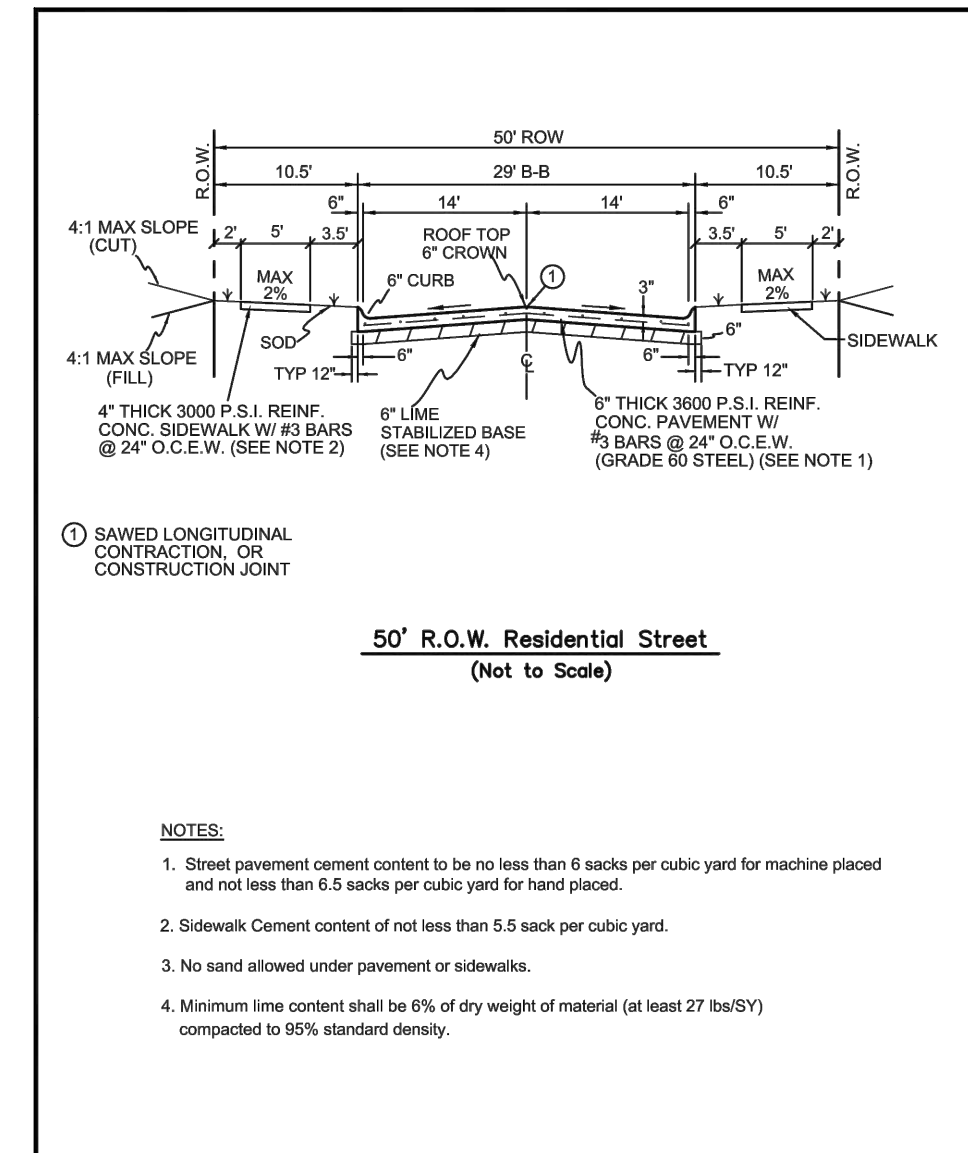
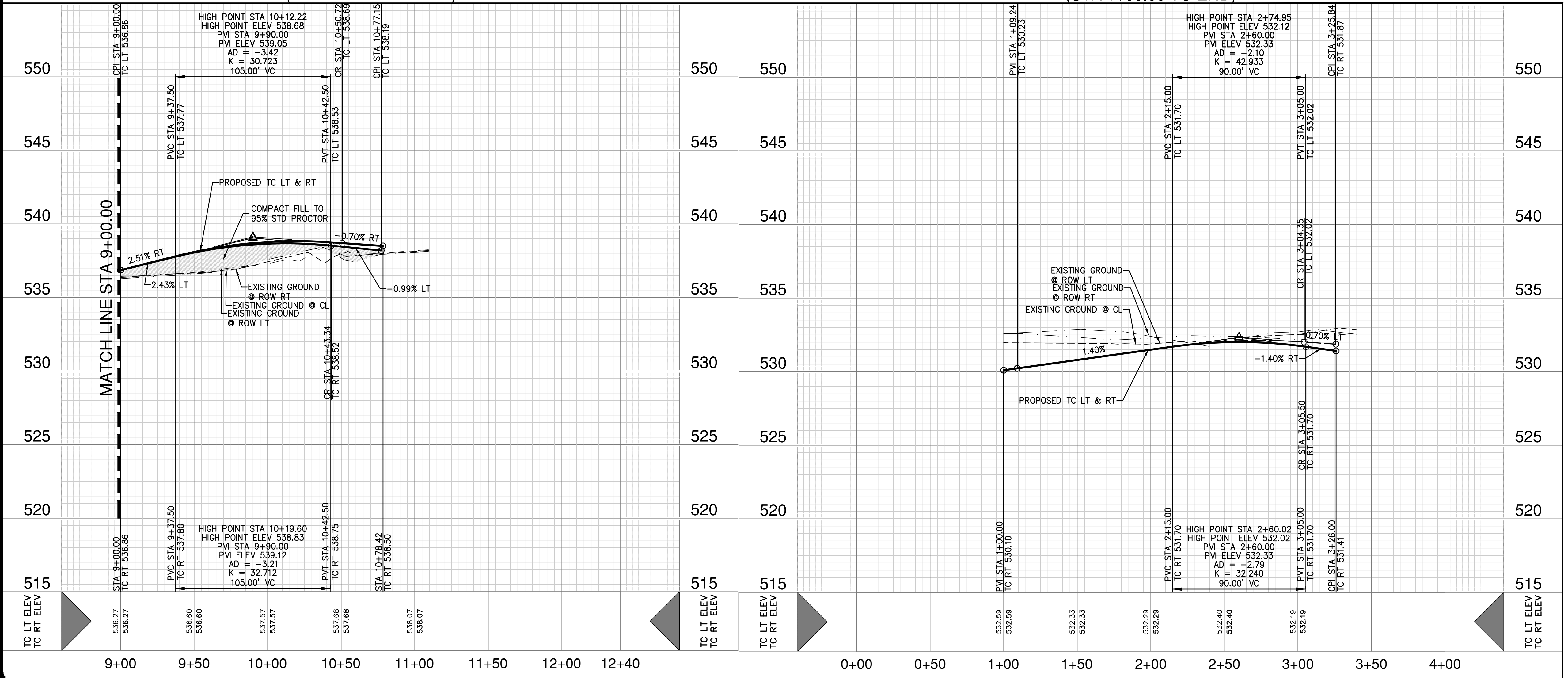
HORIZ. SCALE: 1" = 40'
 VERT. SCALE: 1" = 4'



STREET LEGEND

- PROPOSED PAVEMENT (REFERENCE TYPICAL STREET SECTION FOR SPECIFICATION)
 6" THICK 3600 PSI (6.5 SACK MIX)
 #3 BARS @ 24" O.C.E.W.
- PROPOSED CONCRETE SIDEWALK BY DEVELOPER (THIS CONTRACT)
 4" THICK 3000 PSI (5.5 SACK MIX)
 #3 BARS @ 24" O.C.E.W.
- PROPOSED CONCRETE SIDEWALK BY HOMEOWNER (NOT IN THIS CONTRACT)
- DIRECTIONAL CURB RAMP PER CITY OF ROCKWALL DETAIL R-2125A (THIS CONTRACT)

RECORD DRAWING
 THESE RECORD DRAWINGS ARE BASED ON AS-BUILT DOCUMENTS PROVIDED BY THE CONTRACTOR OR DEVELOPER. FIELD INSPECTION OF CONSTRUCTION, IF REQUIRED FOR COMPLIANCE WITH CERTAIN REGULATORY STANDARDS, WAS NOT PERFORMED BY THE DESIGN ENGINEER. IT IS NOT GUARANTEED THAT THIS DOCUMENT REPRESENTS "AS-BUILT CONDITIONS."
 03/22/2022



REINFORCED CONCRETE PAVEMENT	CITY OF ROCKWALL
LOCAL RESIDENTIAL STREET	

- NOTES**
- ALL EXISTING UTILITY LOCATIONS ARE APPROXIMATE AND WILL BE CONFIRMED BY CONTRACTOR PRIOR TO CONSTRUCTION.
 - CONTRACTOR SHALL PROTECT ALL EXISTING TREES, FENCES, RETAINING WALLS AND STRUCTURES UNLESS OTHERWISE NOTED.
 - ALL CURB RADI SHALL BE TO BACK OF CURB AS FOLLOWS:
 (UNLESS OTHERWISE NOTED):
 E. QUAIL RUN ROAD = 30.5'
 INTERIOR INTERSECTIONS = 20.5'
 - DETENTION SYSTEM MUST BE FUNCTIONAL, WITH EROSION PROTECTION ON SIDES AND BOTTOM PRIOR TO ANY PAVING OPERATIONS (INCLUDING SLAB).
 - 10" PAVEMENT FOR ARTERIAL TO GO TO CURB RETURN OF EACH SIDE STREET (GEM DRIVE, JADE DRIVE, SAPPHIRE ROAD AND PEBBLE LANE).
 - END 6" PAVEMENT ON RESIDENTIAL STREET BEGIN 10" PAVEMENT ON E QUAIL RUN ROAD.

UTILITY NOTE
 THE EXISTING UTILITIES SHOWN ON THESE PLANS WERE COMPILED FROM VARIOUS SOURCES AND ARE INTENDED TO SHOW THE GENERAL EXISTENCE AND LOCATION OF THE UTILITY INFORMATION ON THE PLANS. THE CONTRACTOR SHALL CONTACT A UTILITY LOCATING SERVICE 48 HOURS PRIOR TO ANY CONSTRUCTION ACTIVITY. THE CONTRACTOR SHALL VERIFY THE EXACT LOCATION AND OF ALL EXISTING UTILITIES AND DETERMINE IF THERE ARE ANY CONFLICTS WITH THE PROPOSED FACILITIES. THE CONTRACTOR SHALL NOTIFY THE ENGINEER IMMEDIATELY WHEN CONFLICTS WITH EXISTING UTILITIES ARE DISCOVERED.

RESPONSIBILITY NOTE
 ALL RESPONSIBILITY FOR THE ADEQUACY OF DESIGN REMAINS WITH THE DESIGN ENGINEER. THE CITY OF ROCKWALL, IN REVIEWING AND RELEASING PLANS FOR CONSTRUCTION, ASSUMES NO RESPONSIBILITY FOR THE ADEQUACY OR ACCURACY OF DESIGN.

Plot: Jun 08 09:01:55 AM User: P:\Engineering\Plan Sheets\GEM DRIVE-6126300.dwg
 File: S:\pape-dawson\plan\03\03\20\Design\24.3 Plan Sheets\GEM DRIVE-6126300.dwg

THIS DOCUMENT HAS BEEN PRODUCED FROM MATERIAL THAT WAS STORED AND/OR TRANSMITTED ELECTRONICALLY AND MAY HAVE BEEN INADVERTENTLY ALTERED. RELY ONLY ON FINAL HARD COPY MATERIALS BEARING THE CONSULTANTS ORIGINAL SIGNATURE AND SEAL. AERIAL IMAGERY PROVIDED BY GOOGLE/UNLESS OTHERWISE NOTED. Imagery © 2016, CAROL Digital Globe, Texas Orthology Program, USDA Farm Service Agency.