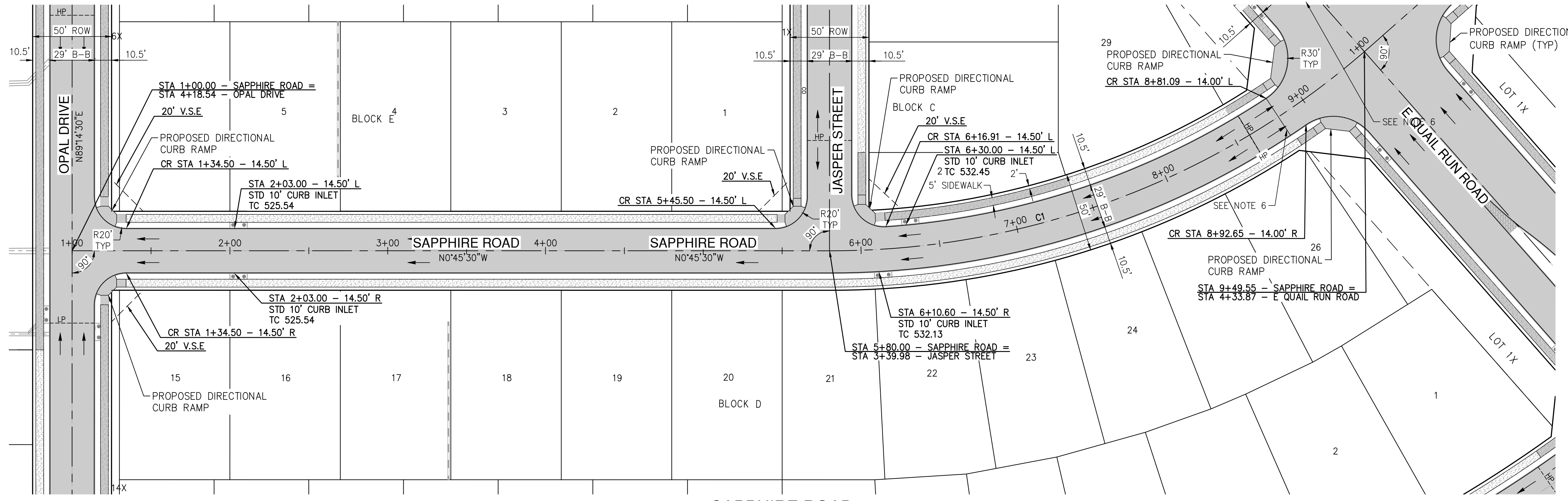
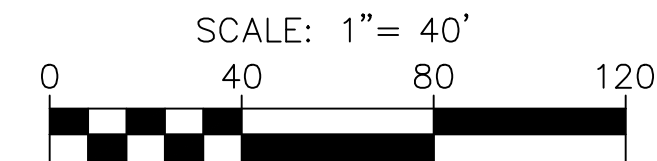
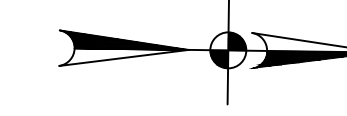


| CENTERLINE CURVE DATA | | | | | | | |
|-----------------------|---------|--------|---------|---------|----------------|--------------|-----------------|
| CURVE | RADIUS | DELTA | TANGENT | LENGTH | CHORD BEARING | CHORD LENGTH | PC PT |
| C1 | 515.00' | 40.97' | 192.38' | 368.22' | N21°14'29.64"W | 360.43' | 5+81.33 9+49.55 |

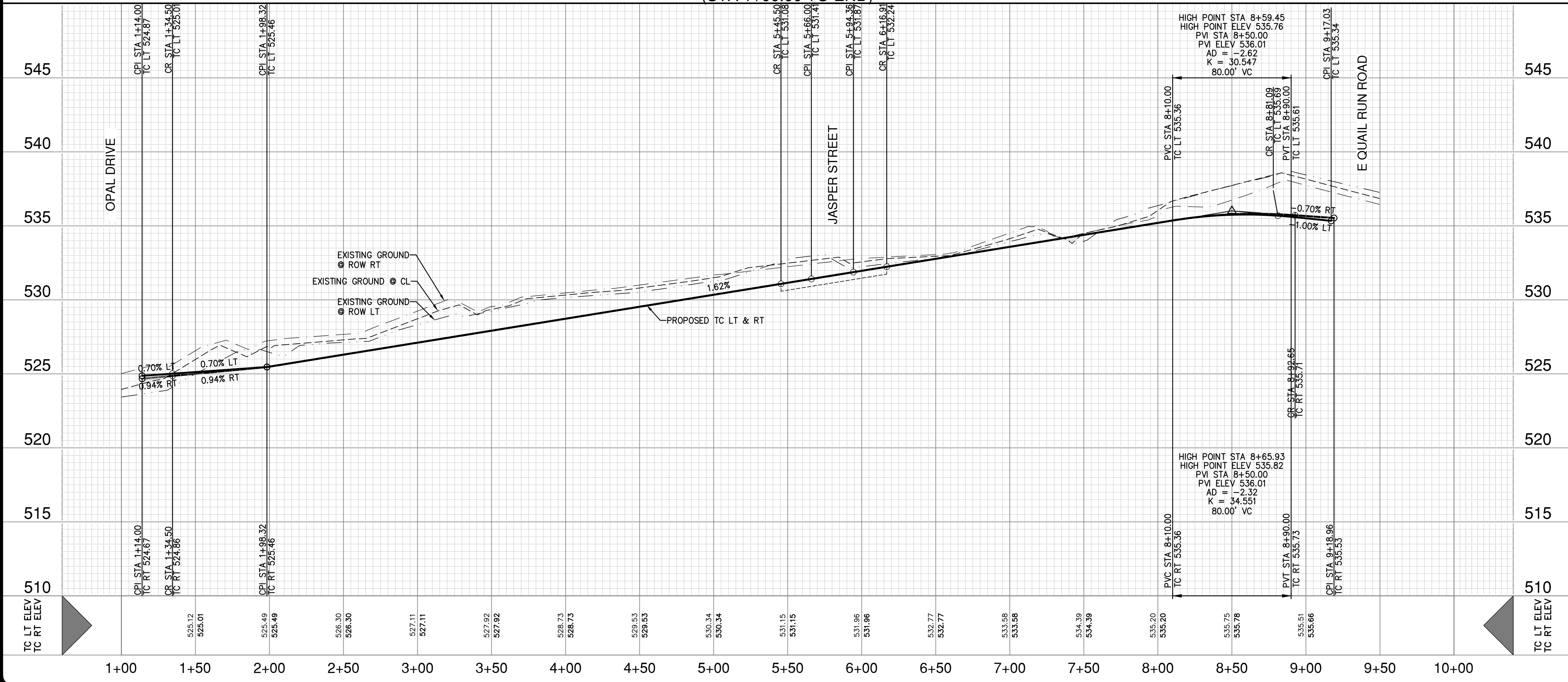


STREET LEGEND

- PROPOSED PAVEMENT (REFERENCE TYPICAL STREET SECTION FOR SPECIFICATION)
6" THICK 3600 PSI (6.5 SACK MIX)
#3 BARS @ 24" O.C.E.W
- PROPOSED CONCRETE SIDEWALK BY DEVELOPER (THIS CONTRACT)
4" THICK 3000 PSI (5.5 SACK MIX)
#3 BARS @ 24" O.C.E.W
- PROPOSED CONCRETE SIDEWALK BY HOMEOWNER (NOT IN THIS CONTRACT)
- DIRECTIONAL CURB RAMP PER CITY OF ROCKWALL DETAIL R-2125A (THIS CONTRACT)

RECORD DRAWING
THESE RECORD DRAWINGS ARE BASED ON AS-BUILT DOCUMENTS PROVIDED BY THE CONTRACTOR OR DEVELOPER. FIELD INSPECTION OF CONSTRUCTION, IF REQUIRED FOR COMPLIANCE WITH CERTAIN REGULATORY STANDARDS, WAS NOT PERFORMED BY THE DESIGN ENGINEER. IT IS NOT GUARANTEED THAT THIS DOCUMENT REPRESENTS 'AS-BUILT CONDITIONS.'
03/22/2022

HORIZ. SCALE: 1" = 40'
VERT. SCALE: 1" = 4'



50' R.O.W. Residential Street (Not to Scale)

NOTES:

- Street pavement content to be no less than 6 sacks per cubic yard for machine placed and not less than 6.5 sacks per cubic yard for hand placed.
- Sidewalk Cement content of not less than 5.5 sack per cubic yard.
- No sand allowed under pavement or sidewalks.
- Minimum lime content shall be 6% of dry weight of material (at least 27 lbs/cy) compacted to 95% standard density.

| | | | |
|------------------------------|------------------|----------|-------------|
| REINFORCED CONCRETE PAVEMENT | CITY OF ROCKWALL | DATE | DRAWING NO. |
| LOCAL RESIDENTIAL STREET | | AUG. '19 | R-2033 |

NOTES

- ALL EXISTING UTILITY LOCATIONS ARE APPROXIMATE AND WILL BE CONFIRMED BY CONTRACTOR PRIOR TO CONSTRUCTION.
- CONTRACTOR SHALL PROTECT ALL EXISTING TREES, FENCES, RETAINING WALLS AND STRUCTURES UNLESS OTHERWISE NOTED.
- ALL CURB RADI SHALL BE TO BACK OF CURB AS FOLLOWS:
(UNLESS OTHERWISE NOTED).
E. QUAIL RUN ROAD = 30.5'
INTERIOR INTERSECTIONS = 20.5'
- DETENTION SYSTEM MUST BE FUNCTIONAL, WITH EROSION PROTECTION ON SIDES AND BOTTOM PRIOR TO ANY PAVING OPERATIONS (INCLUDING SLAB).
- 10" PAVEMENT FOR ARTERIAL TO GO TO CURB RETURN OF EACH SIDE STREET (GEM DRIVE, JADE DRIVE, SAPPHIRE ROAD AND PEBBLE LANE).
- END 6" PAVEMENT ON RESIDENTIAL STREET AND BEGIN 10" PAVEMENT ON E QUAIL RUN ROAD

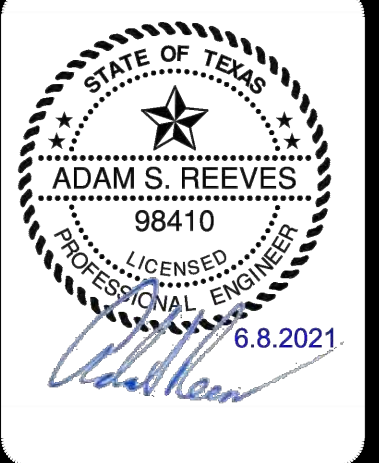
UTILITY NOTE

THE EXISTING UTILITIES SHOWN ON THESE PLANS WERE COMPILED FROM VARIOUS SOURCES AND ARE INTENDED TO SHOW THE GENERAL EXISTENCE AND LOCATION OF THE UTILITY INFORMATION ON THE PLANS. THE CONTRACTOR SHALL CONTACT A UTILITY LOCATING SERVICE 48 HOURS PRIOR TO ANY CONSTRUCTION ACTIVITY. THE CONTRACTOR SHALL VERIFY THE EXACT LOCATION AND OF ALL EXISTING UTILITIES AND DETERMINE IF THERE ARE ANY CONFLICTS WITH THE PROPOSED FACILITIES. THE CONTRACTOR SHALL NOTIFY THE ENGINEER IMMEDIATELY WHEN CONFLICTS WITH EXISTING UTILITIES ARE DISCOVERED.

RESPONSIBILITY NOTE

ALL RESPONSIBILITY FOR THE ADEQUACY OF DESIGN REMAINS WITH THE DESIGN ENGINEER. THE CITY OF ROCKWALL, IN REVIEWING AND RELEASING PLANS FOR CONSTRUCTION, ASSUMES NO RESPONSIBILITY FOR THE ADEQUACY OR ACCURACY OF DESIGN.

| | |
|------|----------|
| DATE | |
| NO. | REVISION |



PAPE-DAWSON ENGINEERS
FORT WORTH | SAN ANTONIO | AUSTIN | HOUSTON | DALLAS
6500 W HWY. STE 700 | FT. WORTH, TX 76102 | 817.870.8868
TEXAS BOARD OF PROFESSIONAL ENGINEERS, FIRM REGISTRATION #470

GIDEON GROVE - PHASE 2
CITY OF ROCKWALL, ROCKWALL COUNTY, TEXAS
SAPPHIRE ROAD
PLAN & PROFILE

| | |
|----------|--------------|
| PLAT NO. | # |
| JOB NO. | 6126300 |
| DATE | June 21 |
| DESIGNER | Ri |
| CHECKED | ASR DRAWN TB |
| SHEET | 24 |

Date: Jun 08, 2021, 8:56am User: P.D. Lefrançois File: S:\Projects\24\GIDEON GROVE\2.0 Design\2.4 Civil\2.4.3 Plan Sheets\SRPP-EP-6126300.dwg

THIS DOCUMENT HAS BEEN PRODUCED FROM MATERIAL THAT WAS STORED AND/OR TRANSMITTED ELECTRONICALLY AND MAY HAVE BEEN INADVERTENTLY ALTERED. RELY ONLY ON FINAL HARDCOPY MATERIALS BEARING THE CONSULTANT'S ORIGINAL SIGNATURE AND SEAL. AERIAL IMAGERY PROVIDED BY GOOGLE UNLESS OTHERWISE NOTED. Imagery © 2016, CAROL Digital Globe, Texas Orthographic Program, USDA Farm Service Agency.