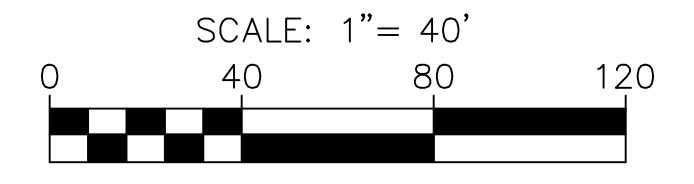
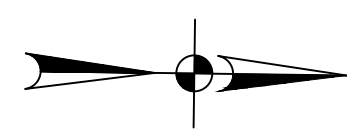
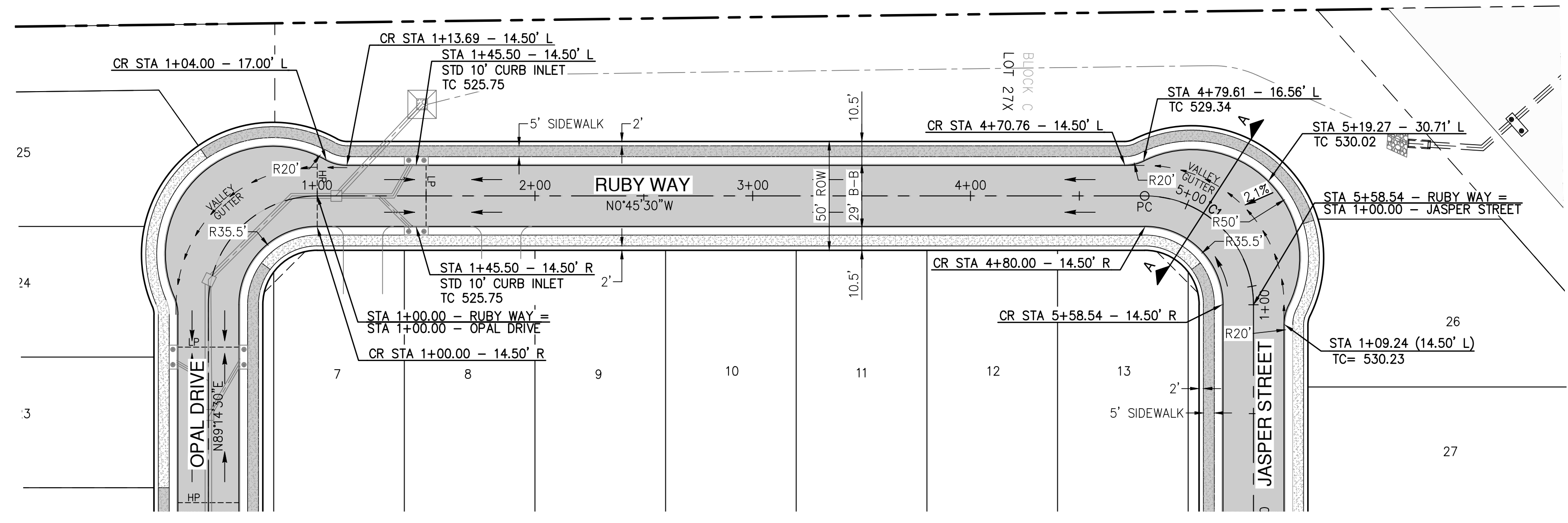
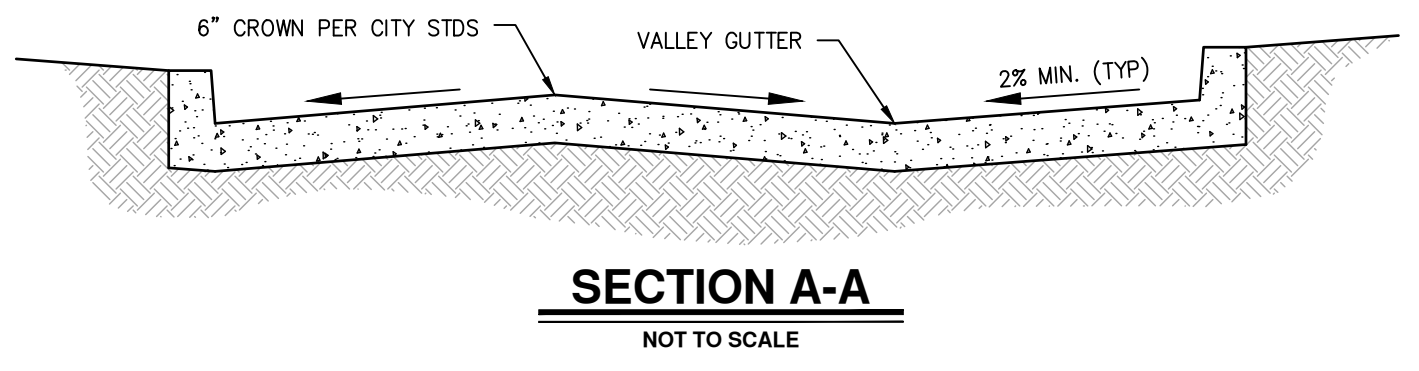


| CENTERLINE CURVE DATA |        |        |         |        |                |              |         |         |
|-----------------------|--------|--------|---------|--------|----------------|--------------|---------|---------|
| CURVE                 | RADIUS | DELTA  | TANGENT | LENGTH | CHORD BEARING  | CHORD LENGTH | PC      | PT      |
| C1                    | 50.00' | 90.00' | 50.00'  | 78.54' | N44°14'29.86"E | 70.71'       | 4+80.00 | 5+58.54 |



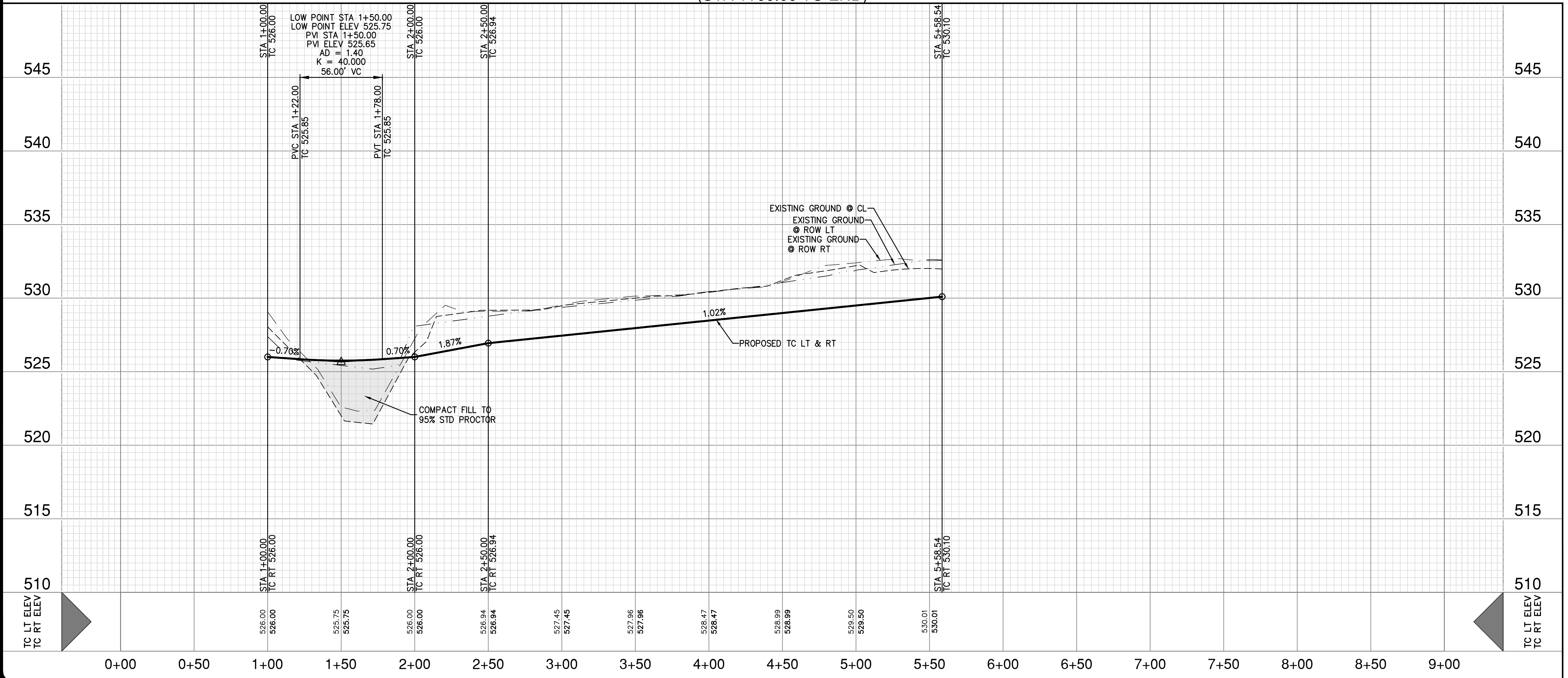
**STREET LEGEND**

- PROPOSED PAVEMENT (REFERENCE TYPICAL STREET SECTION FOR SPECIFICATION)  
6" THICK 3600 PSI (6.5 SACK MIX)  
#3 BARS @ 24" O.C.E.W
- PROPOSED CONCRETE SIDEWALK BY DEVELOPER (THIS CONTRACT)  
4" THICK 3000 PSI (5.5 SACK MIX)  
#3 BARS @ 24" O.C.E.W
- PROPOSED CONCRETE SIDEWALK BY HOMEBUILDER (NOT IN THIS CONTRACT)
- DIRECTIONAL CURB RAMP PER CITY OF ROCKWALL DETAIL R-2125A (THIS CONTRACT)

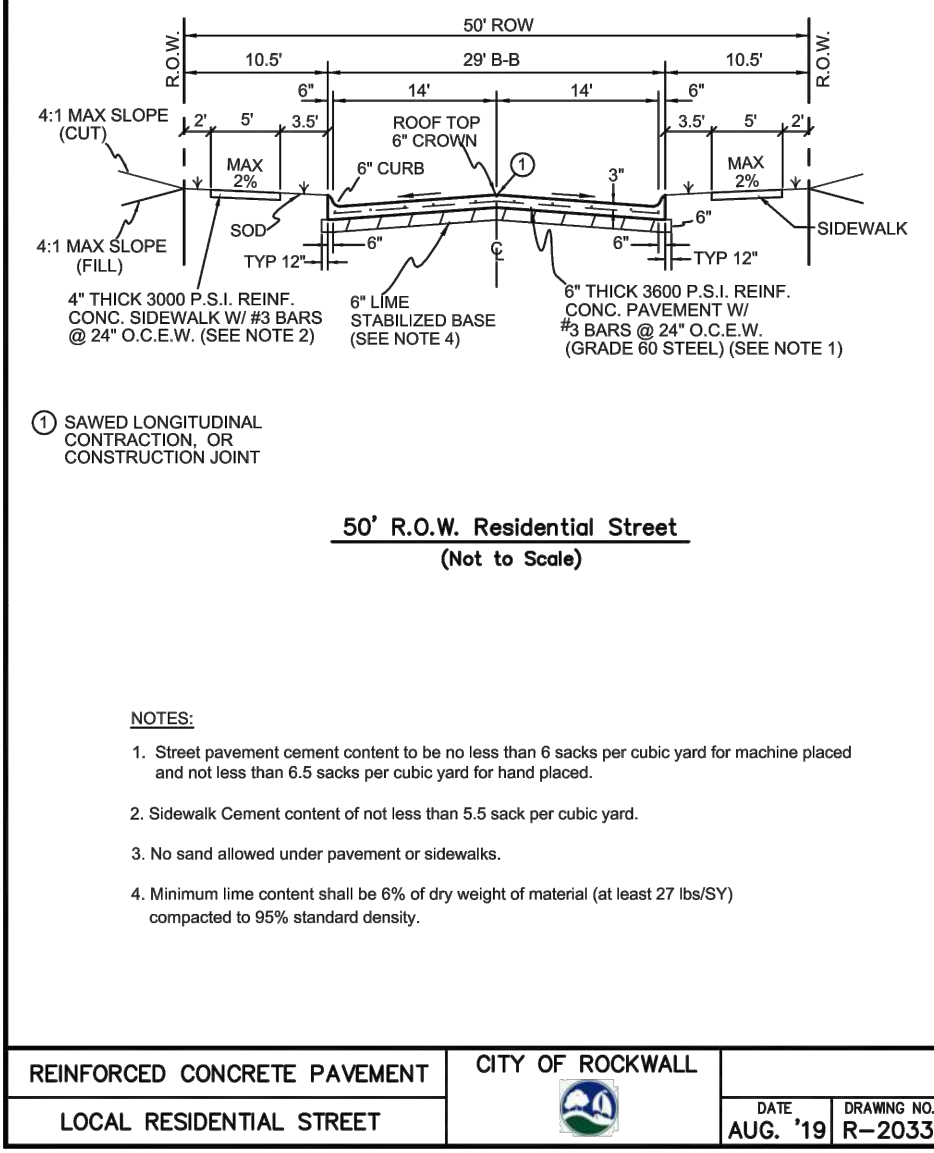


**RUBY WAY  
(STA 1+00.00 TO END)**

HORIZ. SCALE: 1" = 40'  
VERT. SCALE: 1" = 4'



**RECORD DRAWING**  
THESE RECORD DRAWINGS ARE BASED ON AS-BUILT DOCUMENTS PROVIDED BY THE CONTRACTOR OR DEVELOPER. FIELD INSPECTION OF CONSTRUCTION, IF REQUIRED FOR COMPLIANCE WITH CERTAIN REGULATORY STANDARDS, WAS NOT PERFORMED BY THE DESIGN ENGINEER. IT IS NOT GUARANTEED THAT THIS DOCUMENT REPRESENTS AS-BUILT CONDITIONS.  
03/22/2022



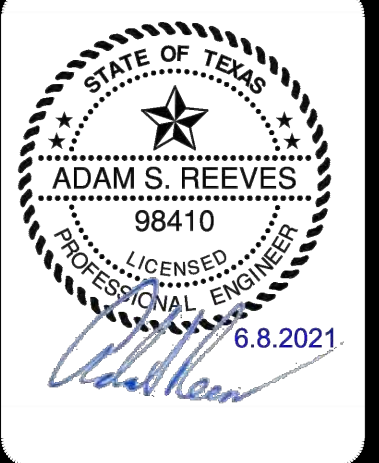
|                              |                  |          |             |
|------------------------------|------------------|----------|-------------|
| REINFORCED CONCRETE PAVEMENT | CITY OF ROCKWALL | DATE     | DRAWING NO. |
| LOCAL RESIDENTIAL STREET     |                  | AUG. '19 | R-2033      |

- NOTES**
- ALL EXISTING UTILITY LOCATIONS ARE APPROXIMATE AND WILL BE CONFIRMED BY CONTRACTOR PRIOR TO CONSTRUCTION.
  - CONTRACTOR SHALL PROTECT ALL EXISTING TREES, FENCES, RETAINING WALLS AND STRUCTURES UNLESS OTHERWISE NOTED.
  - ALL CURB RADI SHALL BE TO BACK OF CURB AS FOLLOWS:  
(UNLESS OTHERWISE NOTED).  
E. QUAIL RUN ROAD = 30.5'  
INTERIOR INTERSECTIONS = 20.5'
  - DETENTION SYSTEM MUST BE FUNCTIONAL, WITH EROSION PROTECTION ON SIDES AND BOTTOM PRIOR TO ANY PAVING OPERATIONS (INCLUDING SLAB).

**UTILITY NOTE**  
THE EXISTING UTILITIES SHOWN ON THESE PLANS WERE COMPILED FROM VARIOUS SOURCES AND ARE INTENDED TO SHOW THE GENERAL EXISTENCE AND LOCATION OF THE UTILITY INFORMATION ON THE PLANS. THE CONTRACTOR SHALL CONTACT A UTILITY LOCATING SERVICE 48 HOURS PRIOR TO ANY CONSTRUCTION ACTIVITY. THE CONTRACTOR SHALL VERIFY THE EXACT LOCATION AND OF ALL EXISTING UTILITIES AND DETERMINE IF THERE ARE ANY CONFLICTS WITH THE PROPOSED FACILITIES. THE CONTRACTOR SHALL NOTIFY THE ENGINEER IMMEDIATELY WHEN CONFLICTS WITH EXISTING UTILITIES ARE DISCOVERED.

**RESPONSIBILITY NOTE**  
ALL RESPONSIBILITY FOR THE ADEQUACY OF DESIGN REMAINS WITH THE DESIGN ENGINEER. THE CITY OF ROCKWALL, IN REVIEWING AND RELEASING PLANS FOR CONSTRUCTION, ASSUMES NO RESPONSIBILITY FOR THE ADEQUACY OR ACCURACY OF DESIGN.

|      |          |
|------|----------|
| DATE |          |
| NO.  | REVISION |



**PAPE-DAWSON ENGINEERS**  
FORT WORTH | SAN ANTONIO | AUSTIN | HOUSTON | DALLAS  
6500 W HWY. STE 700 | FT. WORTH, TX 76102 | 817.870.8868  
TEXAS BOARD OF PROFESSIONAL ENGINEERS, FIRM REGISTRATION #470

**GIDEON GROVE - PHASE 2**  
CITY OF ROCKWALL, ROCKWALL COUNTY, TEXAS  
RUBY WAY  
PLAN AND PROFILE

|          |              |
|----------|--------------|
| PLAT NO. | #            |
| JOB NO.  | 6126300      |
| DATE     | June 21      |
| DESIGNER | Ri           |
| CHECKED  | ASR DRAWN TB |
| SHEET    | 23           |

Date: Jun 09, 2021, 8:56am User: P.D. Lefebvre  
 File: S:\projects\GIDEON GROVE\2.0 Design\2.1 Civil\2.1.3 Plan Sheets\STPP-A-6126300.dwg  
 THIS DOCUMENT HAS BEEN PRODUCED FROM MATERIAL THAT WAS STORED AND/OR TRANSMITTED ELECTRONICALLY AND MAY HAVE BEEN INADVERTENTLY ALTERED. RELY ONLY ON FINAL HARD COPY MATERIALS BEARING THE CONSULTANT'S ORIGINAL SIGNATURE AND SEAL. AERIAL IMAGERY PROVIDED BY GOOGLE/UNLESS OTHERWISE NOTED. Imagery © 2016, CAROL Digital Globe, Texas Orthology Program, USDA Farm Service Agency.