

DEPTH "D"	BILL OF REINFORCING STEEL																																																														
	OPENING LENGTH "L" = 5 ft												OPENING LENGTH "L" = 10 ft												OPENING LENGTH "L" = 15 ft												OPENING LENGTH "L" = 20 ft																										
	Widths "W"			Widths "W"			Widths "W"			Widths "W"			Widths "W"			Widths "W"			Widths "W"			Widths "W"			Widths "W"			Widths "W"			Widths "W"			Widths "W"			Widths "W"			Widths "W"																							
	C	D	E	F	G	H	I	J	K	L	M	C	D	E	F	G	H	I	J	K	L	M	C	D	E	F	G	H	I	J	K	L	M	C	D	E	F	G	H	I	J	K	L	M																			
3'-6"	17	3	2	4	20	24	28	10	10	20	28	32	36	18	18	28	36	40	44	26	26	36	2	2	44	48	52	34	34	44	2	2	2	2	4	20	24	28	10	10	20	28	32	36	18	18	28	36	40	44	26	26	36	2	2	44	48	52	34	34	44	2	2

ALL CONCRETE STRUCTURES SHALL BE CLASS F (4200psi), MIN. 7.0 SACK CEMENT. NO FLY ASH IS ALLOWED IN CONCRETE STRUCTURES.

NOTE:
FOR CONVENIENCE, DEPTHS OF INLETS SHOWN IN ABOVE TABLES ARE IN INCREMENTS OF 3 INCHES BUT ANY DEPTHS OTHER THAN THOSE SHOWN ABOVE MAY BE USED WHEREVER DEEMED NECESSARY. QUANTITIES FOR OTHER DEPTHS FALLING WITHIN THE LIMITS OF THE TABLE MAY BE FOUND BY INTERPOLATION.

R-6020D
BY: [Signature]

CURB INLET
BILL OF REINFORCING STEEL

CITY OF ROCKWALL
STANDARD SPECIFICATION REFERENCE
702
DATE: Mar. 2018
STANDARD DRAWING NO. R-6020D

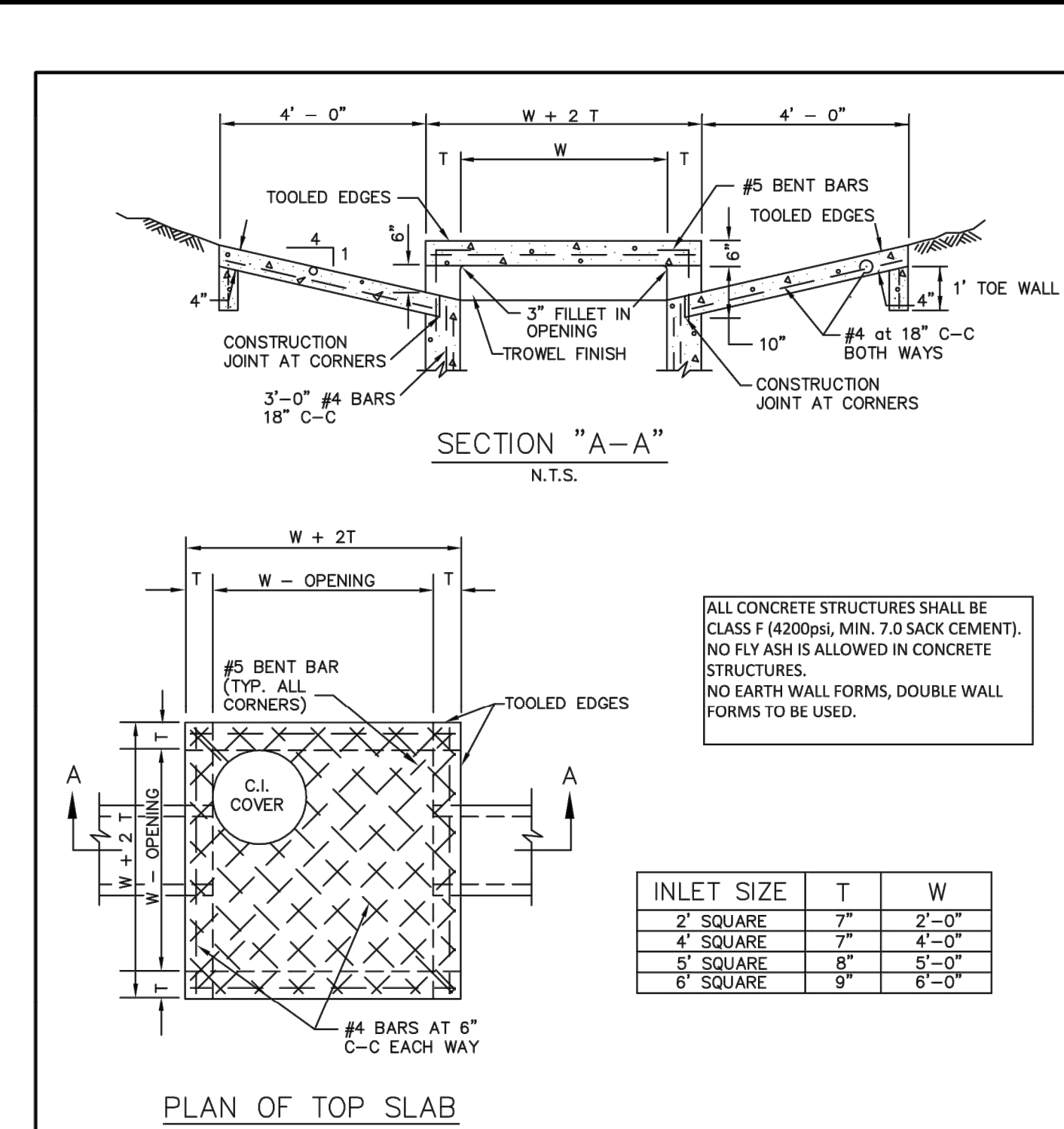
DEPTH "D"	SUMMARY OF QUANTITIES FOR CURB INLETS																																															
	5'-0" OPENING												10'-0" OPENING												15'-0" OPENING												20'-0" OPENING											
	WIDTH 3'-0"			WIDTH 4'-0"			WIDTH 5'-0"			WIDTH 3'-0"			WIDTH 4'-0"			WIDTH 5'-0"			WIDTH 3'-0"			WIDTH 4'-0"			WIDTH 5'-0"			WIDTH 3'-0"			WIDTH 4'-0"			WIDTH 5'-0"														
	CONC.	STEEL.	C.Y.	CONC.	STEEL.	C.Y.	CONC.	STEEL.	C.Y.	CONC.	STEEL.	C.Y.	CONC.	STEEL.	C.Y.	CONC.	STEEL.	C.Y.	CONC.	STEEL.	C.Y.	CONC.	STEEL.	C.Y.	CONC.	STEEL.	C.Y.	CONC.	STEEL.	C.Y.	CONC.	STEEL.	C.Y.	CONC.	STEEL.	C.Y.	CONC.	STEEL.	C.Y.									
3'-6"	2.62	3.06	2.95	3.32	3.28	3.73	4.12	4.79	4.64	5.21	5.20	5.64	5.69	6.67	6.40	7.21	7.10	7.75	7.20	8.46	8.11	9.09	9.03	9.76	3'-9"	2.70	3.09	3.04	3.41	3.39	3.73	4.25	4.94	4.78	5.34	5.79	5.87	6.87	6.58	7.41	7.30	7.96	7.42	8.74	8.34	9.37	9.27	10.10

NOTE:
FOR CONVENIENCE, DEPTHS OF INLETS SHOWN IN ABOVE TABLES ARE IN INCREMENTS OF 3 INCHES BUT ANY DEPTHS OTHER THAN THOSE SHOWN ABOVE MAY BE USED WHEREVER DEEMED NECESSARY. QUANTITIES FOR OTHER DEPTHS FALLING WITHIN THE LIMITS OF THE TABLE MAY BE FOUND BY INTERPOLATION.

R-6020E
BY: [Signature]

CURB INLET
SUMMARY OF QUANTITIES

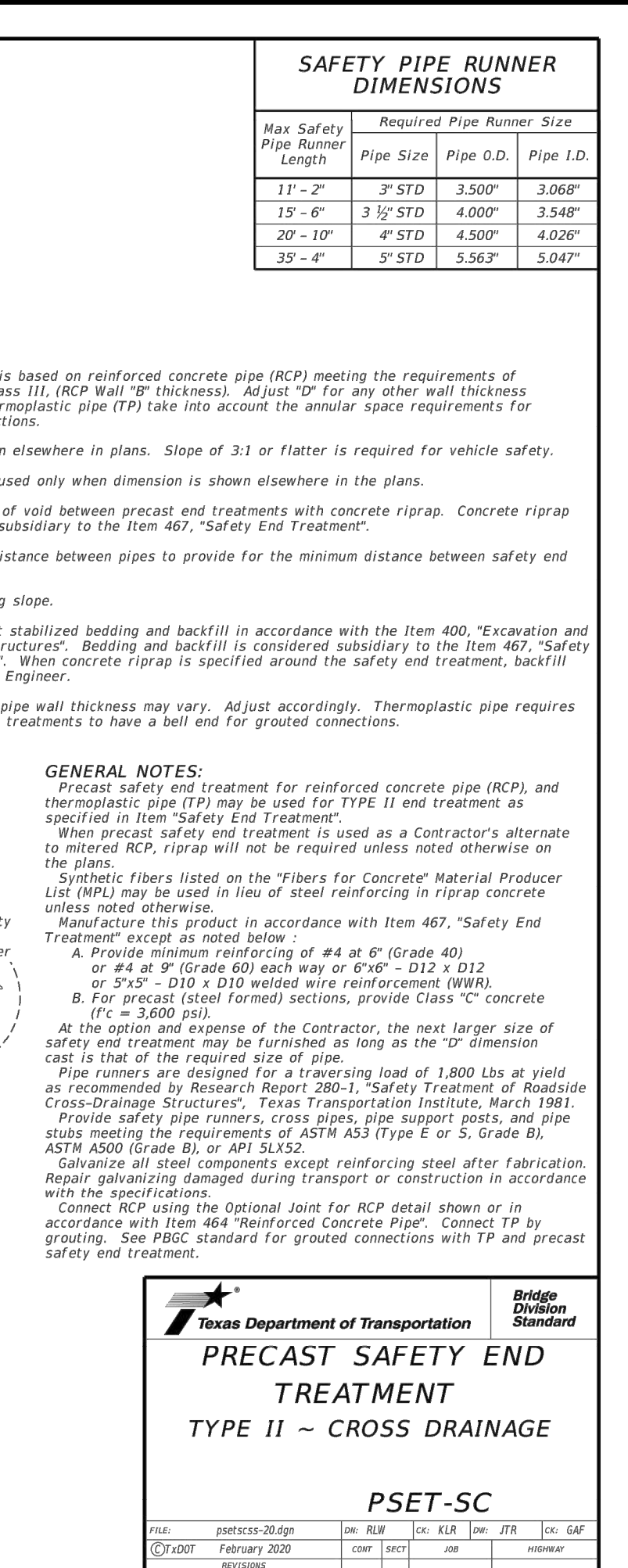
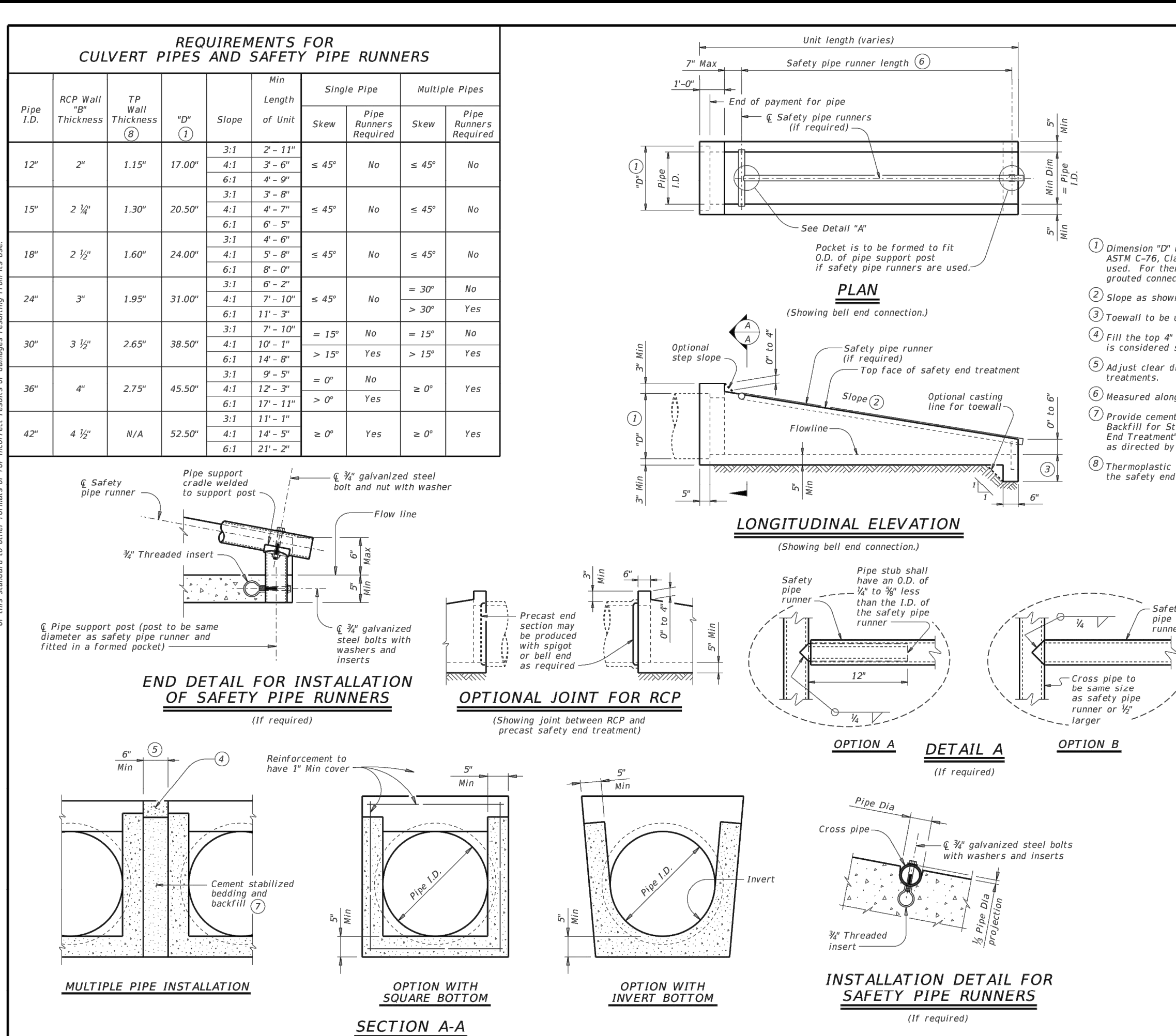
CITY OF ROCKWALL
STANDARD SPECIFICATION REFERENCE
702
DATE: Mar. 2018
STANDARD DRAWING NO. R-6020E



NOTES:

- MATERIAL AND WORKMANSHIP SHALL CONFORM WITH THE REQUIREMENTS OF NCCOG STANDARD SPECIFICATIONS FOR STANDARD CONCRETE MANHOLES. MINIMUM CLASS "A" CONCRETE.
- LAYERS OF REINFORCING STEEL NEAREST THE INTERIOR AND EXTERIOR SURFACES SHALL HAVE A COVER OF 2" TO THE CENTER OF BARS, UNLESS OTHERWISE NOTED.
- FOR DETAILS OF REINFORCING OF LOWER PORTIONS OF INLET SEE APPROPRIATE SQUARE MANHOLE DETAILS.
- DEPTH OF DROP INLET FROM FINISHED GRADE TO FLOW LINE OF INLET IS VARIABLE. APPROXIMATE DEPTH WILL BE SHOWN ON PLANS AT LOCATION OF INLET.
- ALL STANDARD DROP INLETS SHALL HAVE ONE OPENING ON EACH SIDE UNLESS OTHERWISE SHOWN ON PLANS.
- DECK MAY BE REINFORCED SAME AS 4' SQUARE MANHOLE.

DROP INLET
CITY OF ROCKWALL
STANDARD SPECIFICATION REFERENCE
702
DATE: Mar. 2018
STANDARD DRAWING NO. R-6040



RECORD DRAWING
THESE RECORD DRAWINGS ARE BASED ON AS-BUILT DOCUMENTS PROVIDED BY THE CONTRACTOR OR DEVELOPER. FIELD INSPECTION OF CONSTRUCTION IF REQUIRED FOR COMPLIANCE WITH CERTAIN REGULATORY STANDARDS, WAS NOT PERFORMED BY THE DESIGN ENGINEER. IT IS NOT GUARANTEED THAT THIS DOCUMENT REPRESENTS "AS-BUILT CONDITIONS."
03/22/2022

DATE: _____

REVISION: _____

NO. _____

PLAT NO. # _____

JOB NO. 6126300

DATE June 21

DESIGNER CoR

CHECKED CoR DRAWN CoR

SHEET 20

STATE OF TEXAS
ADAM S. REEVES
LICENSED PROFESSIONAL ENGINEER
98410
6.8.2021

PAPE-DAWSON
ENGINEERS
FORT WORTH | SAN ANTONIO | AUSTIN | HOUSTON | DALLAS
6500 W HWY. STE 700 | FT. WORTH, TX 76102 | 817.870.8668
TEXAS BOARD OF PROFESSIONAL ENGINEERS, FIRM REGISTRATION #470

GIDEON GROVE - PHASE 2
CITY OF ROCKWALL, ROCKWALL COUNTY, TEXAS
STORM DRAINAGE DETAILS
SHEET 2

Date: Jun 09, 2021, 6:45:44 AM User: P:\E\Projects\Plan Sets\GIDEON GROVE\03-Storm Drain\03-Storm Drain\03-Storm Drain.dwg
 Plot: S:\Projects\GIDEON GROVE\03-Storm Drain\03-Storm Drain\03-Storm Drain.dwg
 This document has been produced from material that was stored and/or transmitted electronically and may have been inadvertently altered. Rely only on final hardcopy materials bearing the consultant's original signature and seal. Aerial imagery provided by Google/Earth/Mapbox. Texas Orthographic Projection, USDA Farm Service Agency.