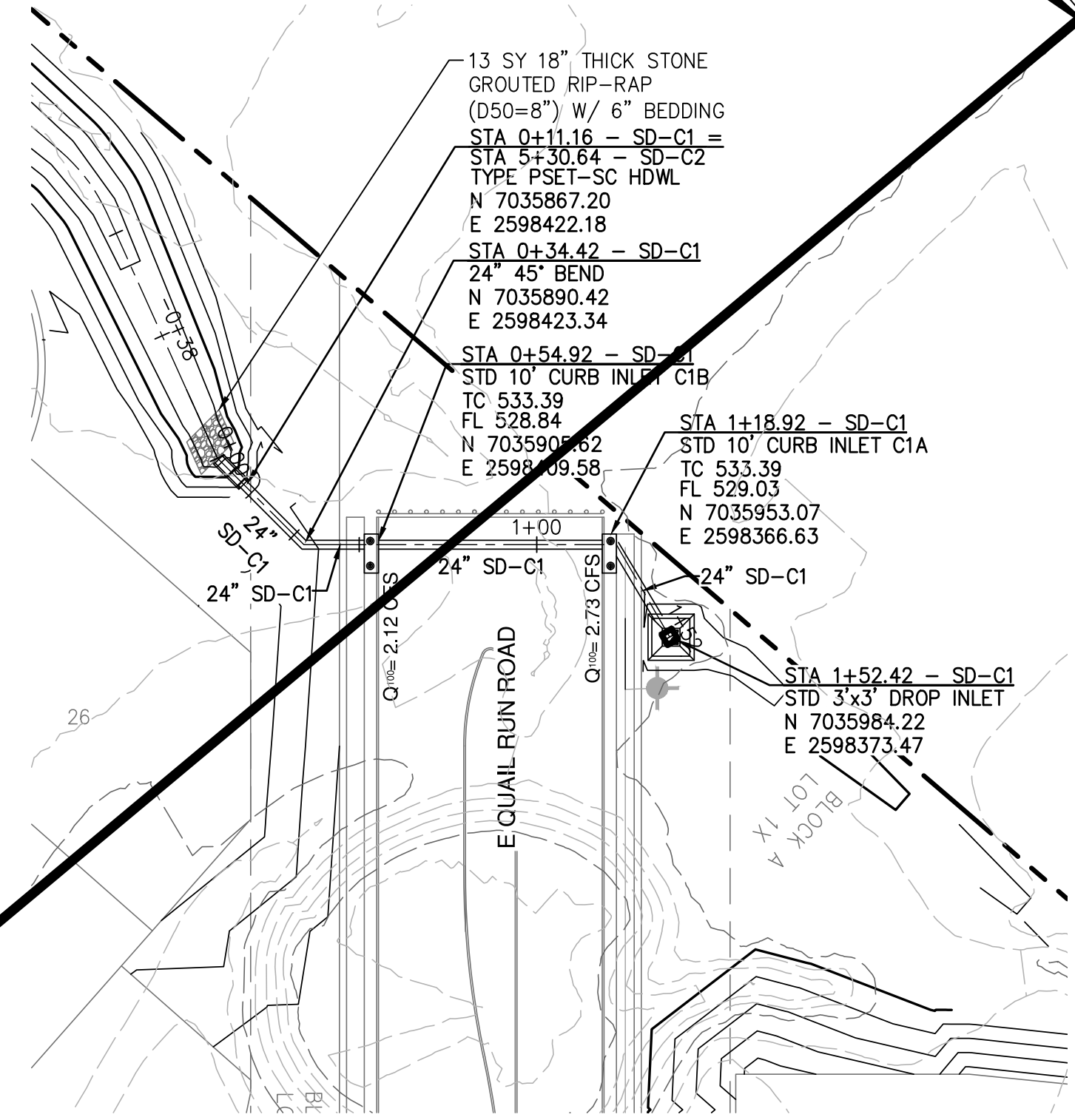
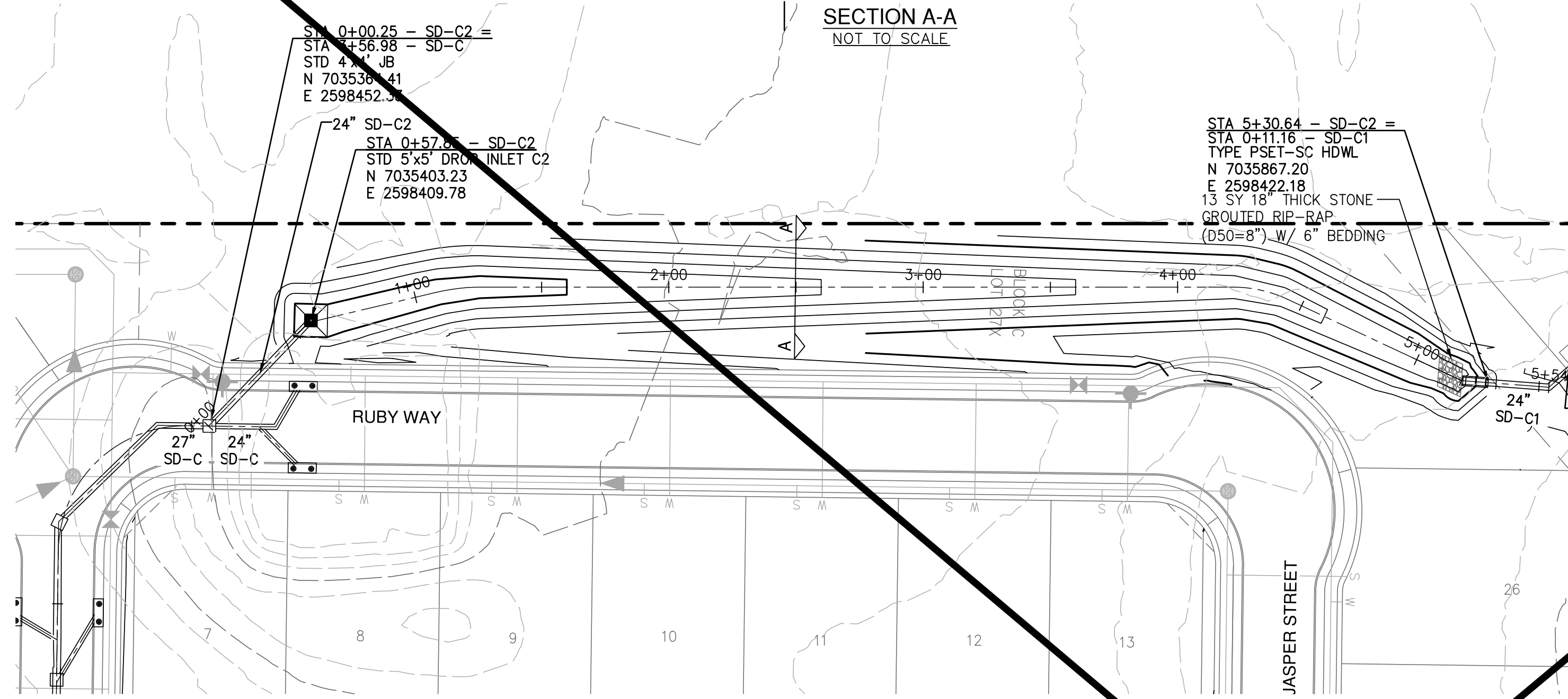
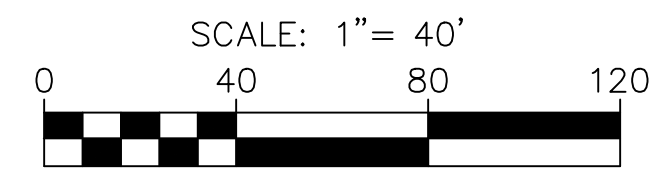
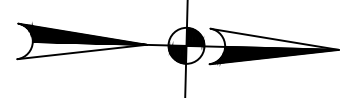
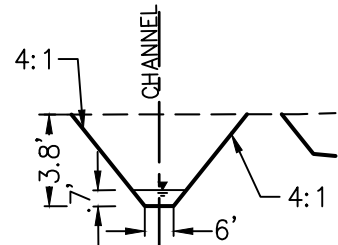


Section	Channel Type	Bottom Width (ft)	Left Side Slope (%)	Right Side Slope (%)	Top Flow Width (ft)	Slope (ft/ft)	Manning's n (Capacity)	Manning's n (Velocity)	Q (cfs)	Flow Depth (ft)	Flow Area (sqft)	Flow Perimeter	Hydraulic Radius R_h	Velocity (fps)	Channel Depth (ft)	Freeboard (ft)	Channel Top Width	Channel Area (sqft)	Channel Perimeter	R_a	Q Capacity cfs
24"	Trapezoidal	6	25%	25%	11.61	0.01	0.05	0.035	11.91	0.70	6.17	11.78	0.52	2.48	3.5	3.80	34.00	70.00	34.86	2.01	331.12

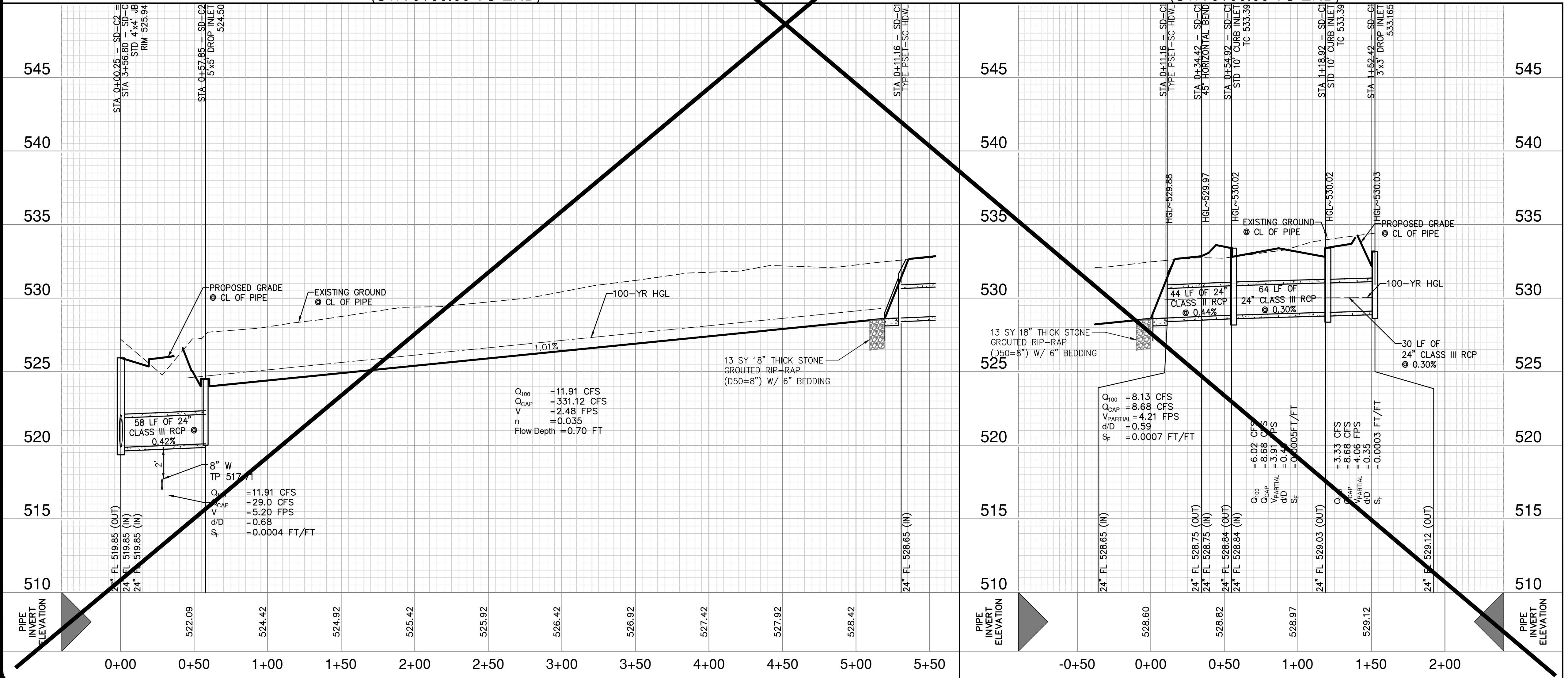


ULTIMATE CONDITIONS (NOT TO BE CONSTRUCTED WITH THIS CONTRACT)

STORM DRAIN C2
(STA 0+00.00 TO END)

STORM DRAIN C1
(STA 0+00.00 TO END)

HORIZ. SCALE: 1" = 40'
VERT. SCALE: 1" = 4'



Gregory Method Riprap Sizing	SD-C1
Vel (fps) =	4.21
g (ft/s ²) =	32.2
s (pcf) =	160
T w (pcf) =	62.4
C =	1.8
D ₅₀ (in) =	5.8
D ₈₀ Used =	8
Riprap Thickness (in) =	12
Bedding Thickness (in) =	6
Total Thickness (in) =	18

RIPRAP GRADATION		BEDDING GRADATION	
PERCENT	PASSING	PERCENT	PASSING
21 INCH	100	3 INCH	100
18 INCH	65-100	1-1/2 INCH	55-100
12 INCH	35-65	3/4 INCH	25-60
8 INCH	15-40	3/8 INCH	5-30
6 INCH	5-25	NO. 4	0-10
4 INCH	0-15		

RECORD DRAWING
THESE RECORD DRAWINGS ARE BASED ON AS-BUILT DOCUMENTS PROVIDED BY THE CONTRACTOR OR DEVELOPER. FIELD INSPECTION OF CONSTRUCTION IF REQUIRED FOR COMPLIANCE WITH CERTAIN REGULATORY STANDARDS, WAS NOT PERFORMED BY THE DESIGN ENGINEER. IT IS NOT GUARANTEED THAT THIS DOCUMENT REPRESENTS AS-BUILT CONDITIONS.
03/22/2022

NOTES

- ALL EXISTING UTILITY LOCATIONS ARE APPROXIMATE AND WILL BE CONFIRMED BY CONTRACTOR PRIOR TO CONSTRUCTION.
- CONTRACTOR SHALL PROTECT ALL EXISTING TREES, FENCES, RETAINING WALLS AND STRUCTURES UNLESS OTHERWISE NOTED.

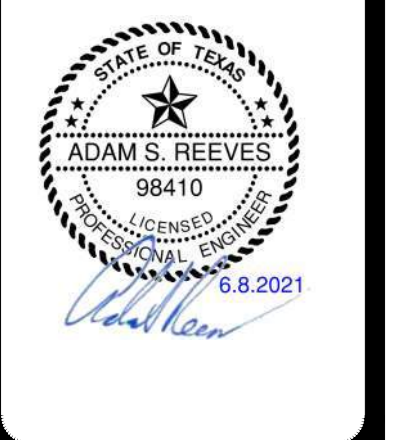
UTILITY NOTE

THE EXISTING UTILITIES SHOWN ON THESE PLANS WERE COMPILED FROM VARIOUS SOURCES AND ARE INTENDED TO SHOW THE GENERAL EXISTENCE AND LOCATION OF THE UTILITY INFORMATION ON THE PLANS. THE CONTRACTOR SHALL CONTACT A UTILITY LOCATING SERVICE 48 HOURS PRIOR TO ANY CONSTRUCTION ACTIVITY. THE CONTRACTOR SHALL VERIFY THE EXACT LOCATION AND OF ALL EXISTING UTILITIES AND DETERMINE IF THERE ARE ANY CONFLICTS WITH THE PROPOSED FACILITIES. THE CONTRACTOR SHALL NOTIFY THE ENGINEER IMMEDIATELY WHEN CONFLICTS WITH EXISTING UTILITIES ARE DISCOVERED.

RESPONSIBILITY NOTE

ALL RESPONSIBILITY FOR THE ADEQUACY OF DESIGN REMAINS WITH THE DESIGN ENGINEER. THE CITY OF ROCKWALL, IN REVIEWING AND RELEASING PLANS FOR CONSTRUCTION, ASSUMES NO RESPONSIBILITY FOR THE ADEQUACY OR ACCURACY OF DESIGN.

DATE	NO.	REVISION



PAPE-DAWSON ENGINEERS
FORT WORTH | SAN ANTONIO | AUSTIN | HOUSTON | DALLAS
6500 W HWY. STE 700 | FT. WORTH, TX 76102 | 817.870.8868
TEXAS BOARD OF PROFESSIONAL ENGINEERS, FIRM REGISTRATION #470

GIDEON GROVE - PHASE 2
CITY OF ROCKWALL, ROCKWALL COUNTY, TEXAS
STORM DRAIN LINE C1
PLAN & PROFILE (ULTIMATE CONDITIONS)

PLAT NO.	#
JOB NO.	6126300
DATE	June 2021
DESIGNER	ML
CHECKED	ASR DRAWN TB
SHEET	16B

Date: Mar 19, 2021, 8:52am User: P:_...
File: S:\projects\1612\1612_03_20_21\Design\2 & 3\Call\2.4.3 Plan Sheets\SD-C-16120300.dwg

THIS DOCUMENT HAS BEEN PRODUCED FROM MATERIAL THAT WAS STORED AND/OR TRANSMITTED ELECTRONICALLY AND MAY HAVE BEEN INADVERTENTLY ALTERED. RELY ONLY ON FINAL HARDCOPY MATERIALS BEARING THE CONSULTANT'S ORIGINAL SIGNATURE AND SEAL. AERIAL IMAGERY PROVIDED BY GOOGLE/© UNLESS OTHERWISE NOTED. Imagery © 2016, CAROL Digital Globe, Texas Orthology Program, USDA Farm Service Agency.