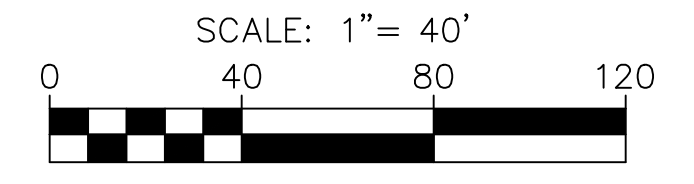
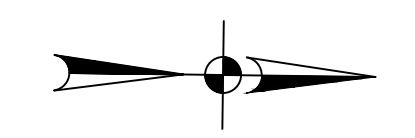


STORM DRAIN B
(STA 9+00.00 TO END)



BENCHMARKS

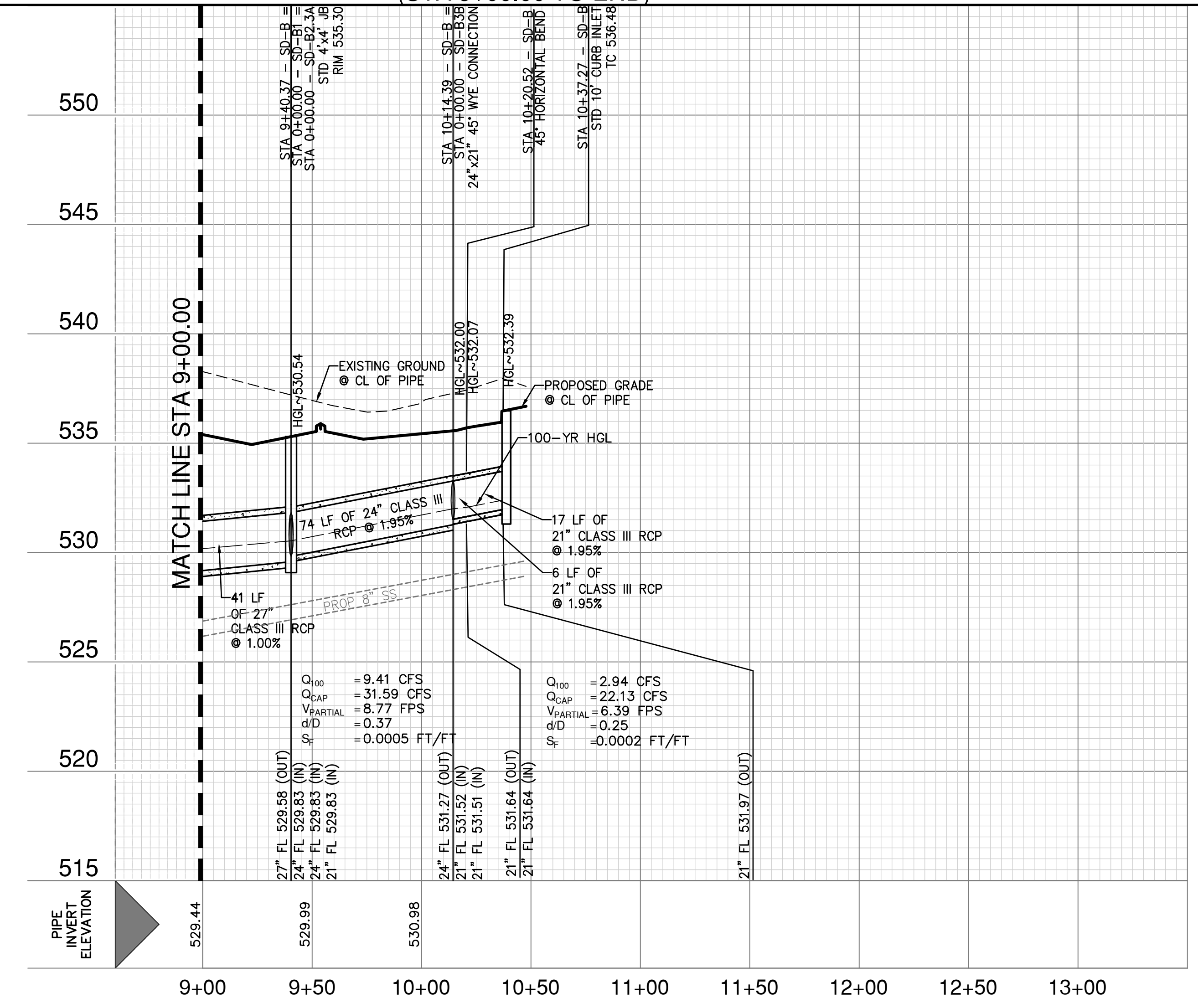
B.M. NO. 1
X-CUT SET IN CONCRETE LOCATED IN THE CENTER OF A CURB INLET IN THE SOUTHWESTERLY CURB LINE OF NORTH JOHN KING BOULEVARD AND BEING +/- 235' SOUTHWEST OF THE NORTHWEST CORNER OF THE SUBJECT TRACT AND +/- 535' NORTHWEST OF THE INTERSECTION OF N. JOHN KING BOULEVARD AND EAST QUAIL RUN ROAD. ELEV. 546.16'

B.M. NO. 2
X-CUT SET IN CONCRETE LOCATED IN THE CENTER OF A CURB INLET IN THE WEST CURB LINE OF NORTH JOHN KING BOULEVARD AND BEING +/- 662' NORTH OF THE INTERSECTION NORTH JOHN KING BOULEVARD AND WEST QUAIL RUN ROAD AND +/- 723' SOUTHEAST OF THE INTERSECTION OF N. JOHN KING BOULEVARD AND EAST QUAIL RUN ROAD. ELEV. 530.38'

DRAIN LEGEND

- W — PROPOSED WATER LINE
- G — PROPOSED GATE VALVE
- F — PROPOSED FIRE HYDRANT ASSEMBLY
- SS — PROPOSED SANITARY SEWER LINE
- S — PROPOSED SANITARY SEWER MANHOLE
- SD — PROPOSED STORM DRAIN
- EX-W — EXISTING WATER LINE
- EX-G — EXISTING GATE VALVE
- EX-F — EXISTING FIRE HYDRANT
- EX-SS — EXISTING SANITARY SEWER LINE
- EX-S — EXISTING SANITARY SEWER MANHOLE
- EX-SD — EXISTING STORM DRAIN

HORIZ. SCALE: 1" = 40'
VERT. SCALE: 1" = 4'



RECORD DRAWING
THESE RECORD DRAWINGS ARE BASED ON AS-BUILT DOCUMENTS PROVIDED BY THE CONTRACTOR OR DEVELOPER. FIELD INSPECTION OF CONSTRUCTION IS REQUIRED FOR COMPLIANCE WITH CERTAIN REGULATORY STANDARDS. WAS NOT PERFORMED BY THE DESIGN ENGINEER. IT IS NOT GUARANTEED THAT THIS DOCUMENT REPRESENTS 'AS-BUILT CONDITIONS.'
03/22/2022

NOTES

- ALL EXISTING UTILITY LOCATIONS ARE APPROXIMATE AND WILL BE CONFIRMED BY CONTRACTOR PRIOR TO CONSTRUCTION.
- CONTRACTOR SHALL PROTECT ALL EXISTING TREES, FENCES, RETAINING WALLS AND STRUCTURES UNLESS OTHERWISE NOTED.

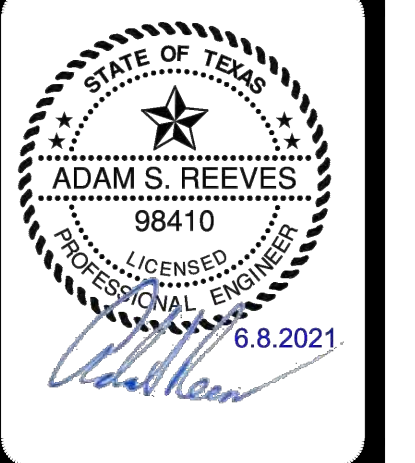
UTILITY NOTE

THE EXISTING UTILITIES SHOWN ON THESE PLANS WERE COMPILED FROM VARIOUS SOURCES AND ARE INTENDED TO SHOW THE GENERAL EXISTENCE AND LOCATION OF THE UTILITY INFORMATION ON THE PLANS. THE CONTRACTOR SHALL CONTACT A UTILITY LOCATING SERVICE 48 HOURS PRIOR TO ANY CONSTRUCTION ACTIVITY. THE CONTRACTOR SHALL VERIFY THE EXACT LOCATION AND OF ALL EXISTING UTILITIES AND DETERMINE IF THERE ARE ANY CONFLICTS WITH THE PROPOSED FACILITIES. THE CONTRACTOR SHALL NOTIFY THE ENGINEER IMMEDIATELY WHEN CONFLICTS WITH EXISTING UTILITIES ARE DISCOVERED.

RESPONSIBILITY NOTE

ALL RESPONSIBILITY FOR THE ADEQUACY OF DESIGN REMAINS WITH THE DESIGN ENGINEER. THE CITY OF ROCKWALL, IN REVIEWING AND RELEASING PLANS FOR CONSTRUCTION, ASSUMES NO RESPONSIBILITY FOR THE ADEQUACY OR ACCURACY OF DESIGN.

DATE	
NO.	
REVISION	



PAPE-DAWSON ENGINEERS

FORT WORTH | SAN ANTONIO | AUSTIN | HOUSTON | DALLAS
6500 W HWY. STE 700 | FT. WORTH, TX 76102 | 817.870.8668
TEXAS BOARD OF PROFESSIONAL ENGINEERS, FIRM REGISTRATION #470

GIDEON GROVE - PHASE 2
CITY OF ROCKWALL, ROCKWALL COUNTY, TEXAS

STORM DRAIN LINE B
PLAN AND PROFILE 2 OF 2

PLAT NO.	#
JOB NO.	6126300
DATE	June 21
DESIGNER	ML
CHECKED	ASR DRAWN TB
SHEET	12

Date: Jun 09, 2021, 5:57:41 AM, User: P. L. Ferguson
File: S:\projects\2021\GIDEON GROVE\2.0 Design\2.4 Civil\2.4.3 Plan Sheets\SD-B-0126300.dwg
THIS DOCUMENT HAS BEEN PRODUCED FROM MATERIAL THAT WAS STORED AND/OR TRANSMITTED ELECTRONICALLY AND MAY HAVE BEEN INADVERTENTLY ALTERED. RELY ONLY ON FINAL HARDCOPY MATERIALS BEARING THE CONSULTANT'S ORIGINAL SIGNATURE AND SEAL. AERIAL IMAGERY PROVIDED BY GOOGLE EARTH UNLESS OTHERWISE NOTED. Imagery © 2016, CAROLINA, Digital Globe, Texas Orthology Program, USDA Farm Service Agency.