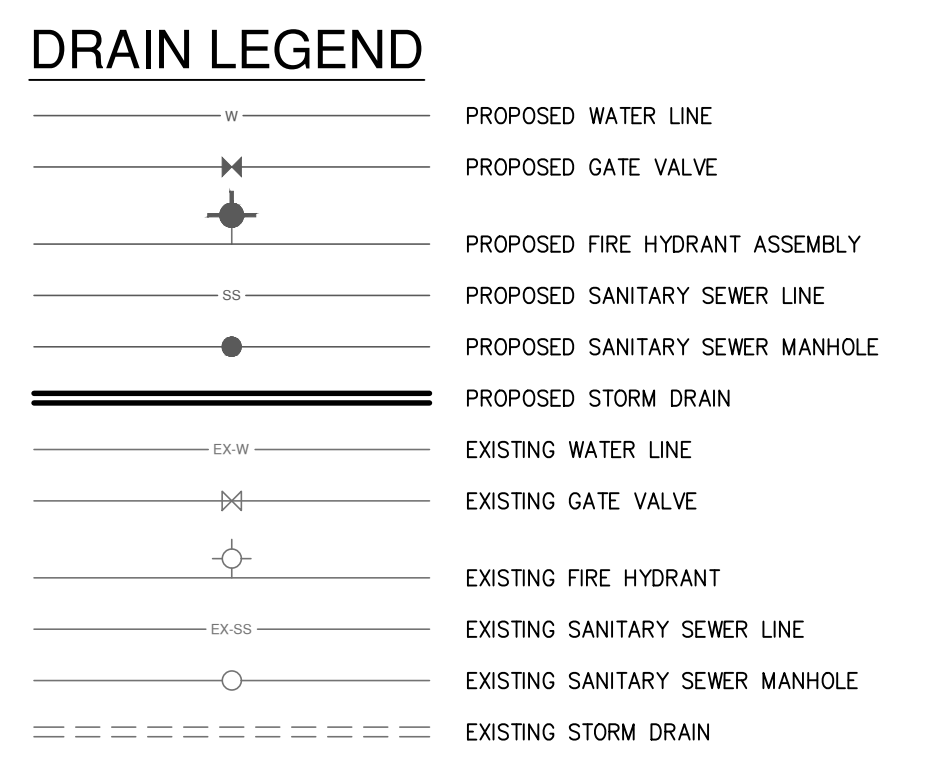


**BENCHMARKS**

**BM No. 1**  
 X-CUT SET IN CONCRETE LOCATED IN THE CENTER OF A CURB INLET IN THE SOUTHWESTERLY CURB LINE OF NORTH JOHN KING BOULEVARD AND BEING +/- 235' SOUTHWEST OF THE NORTHWEST CORNER OF THE SUBJECT TRACT AND +/- 723' NORTHWEST OF THE INTERSECTION OF N. JOHN KING BOULEVARD AND EAST QUAIL RUN ROAD. ELEV. 546.16'

**BM No. 2**  
 X-CUT SET IN CONCRETE LOCATED IN THE CENTER OF A CURB INLET IN THE WEST BOUNDARY OF NORTH JOHN KING BOULEVARD AND BEING +/- 662' NORTH OF THE INTERSECTION NORTH JOHN KING BOULEVARD AND WEST QUAIL RUN ROAD AND +/- 723' SOUTHWEST OF THE INTERSECTION OF N. JOHN KING BOULEVARD AND EAST QUAIL RUN ROAD. ELEV. 530.38'

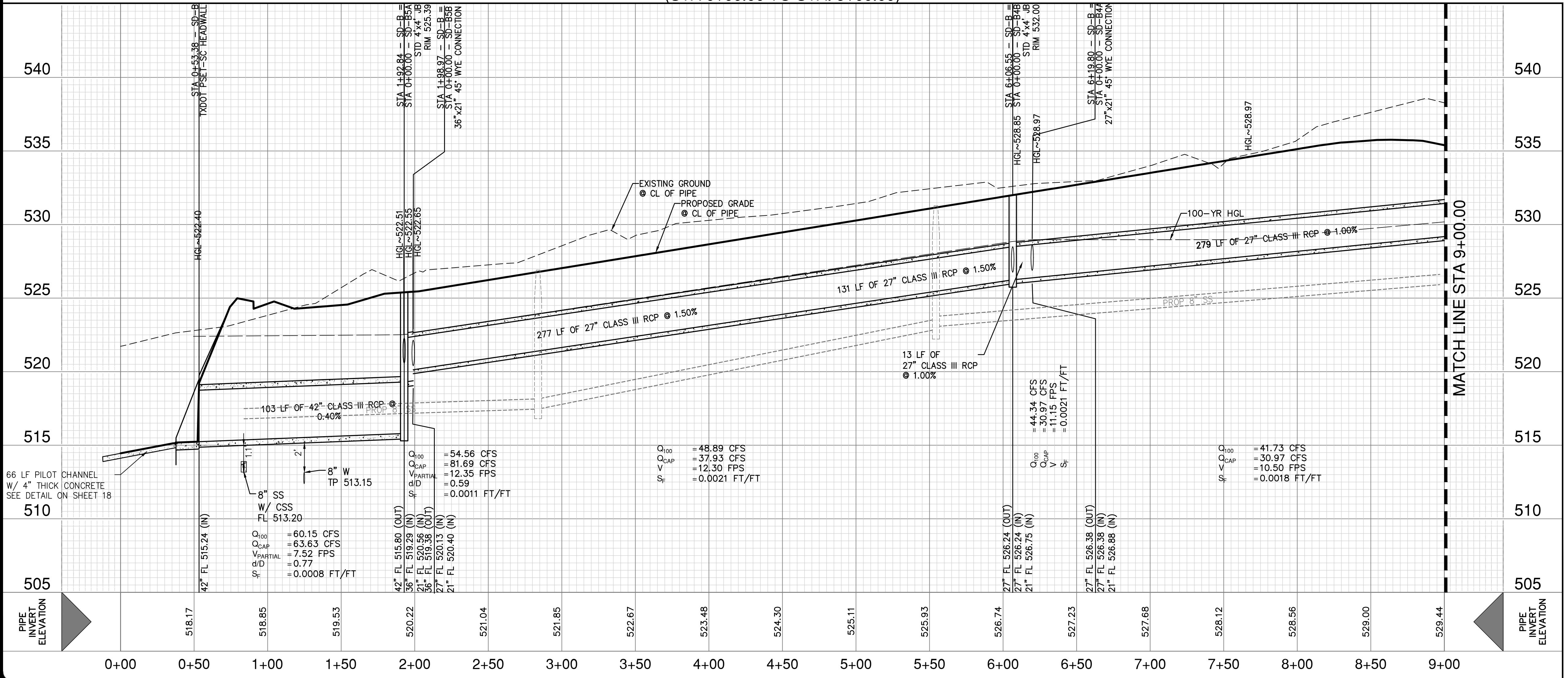


**CENTERLINE CURVE DATA**

CURVE	RADIUS	DELTA	TANGENT	LENGTH	CHORD BEARING	CHORD LENGTH	PC	PT
C1	515.00'	25.85'	118.21'	232.39'	N18°47'34.91"W	230.42'	6+31.58	8+63.97

**STORM DRAIN B  
(STA 0+00.00 TO STA. 9+00.00)**

HORIZ. SCALE: 1" = 40'  
 VERT. SCALE: 1" = 4'



**RECORD DRAWING**  
 THESE RECORD DRAWINGS ARE BASED ON AS-BUILT DOCUMENTS PROVIDED BY THE CONTRACTOR OR DEVELOPER. FIELD INSPECTION OF CONSTRUCTION, IF REQUIRED FOR COMPLIANCE WITH CERTAIN REGULATORY STANDARDS, WAS NOT PERFORMED BY THE DESIGN ENGINEER. IT IS NOT GUARANTEED THAT THIS DOCUMENT REPRESENTS AS-BUILT CONDITIONS.  
 03/22/2022

- NOTES**
- ALL EXISTING UTILITY LOCATIONS ARE APPROXIMATE AND WILL BE CONFIRMED BY CONTRACTOR PRIOR TO CONSTRUCTION.
  - CONTRACTOR SHALL PROTECT ALL EXISTING TREES, FENCES, RETAINING WALLS AND STRUCTURES UNLESS OTHERWISE NOTED.

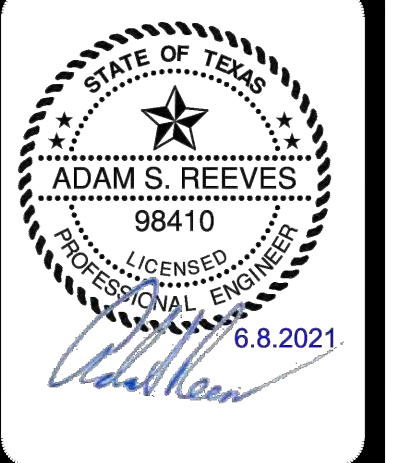
**UTILITY NOTE**

THE EXISTING UTILITIES SHOWN ON THESE PLANS WERE COMPILED FROM VARIOUS SOURCES AND ARE INTENDED TO SHOW THE GENERAL EXISTENCE AND LOCATION OF THE UTILITY INFORMATION ON THE PLANS. THE CONTRACTOR SHALL CONTACT A UTILITY LOCATING SERVICE 48 HOURS PRIOR TO ANY CONSTRUCTION ACTIVITY. THE CONTRACTOR SHALL VERIFY THE EXACT LOCATION AND OF ALL EXISTING UTILITIES AND DETERMINE IF THERE ARE ANY CONFLICTS WITH THE PROPOSED FACILITIES. THE CONTRACTOR SHALL NOTIFY THE ENGINEER IMMEDIATELY WHEN CONFLICTS WITH EXISTING UTILITIES ARE DISCOVERED.

**RESPONSIBILITY NOTE**

ALL RESPONSIBILITY FOR THE ADEQUACY OF DESIGN REMAINS WITH THE DESIGN ENGINEER. THE CITY OF ROCKWALL, IN REVIEWING AND RELEASING PLANS FOR CONSTRUCTION, ASSUMES NO RESPONSIBILITY FOR THE ADEQUACY OR ACCURACY OF DESIGN.

NO.	REVISION	DATE



**PAPE-DAWSON ENGINEERS**  
 PORT WORTH | SAN ANTONIO | AUSTIN | HOUSTON | DALLAS  
 6500 W. HWY. STE 700 | FT. WORTH, TX 76102 | 817.870.8868  
 TEXAS BOARD OF PROFESSIONAL ENGINEERS, FIRM REGISTRATION #470

**GIDEON GROVE - PHASE 2**  
 CITY OF ROCKWALL, ROCKWALL COUNTY, TEXAS  
 STORM DRAIN LINE B  
 PLAN AND PROFILE 1 OF 2

PLAT NO.	#
JOB NO.	6126300
DATE	June 21
DESIGNER	ML
CHECKED	ASR DRAWN TB
SHEET	11

Drawn: Jun 09, 2021, 8:50am User: P.D. L.F. (pape) File: S:\projects\24\GIDEON GROVE\2.0\Design\2.4.3 Plan Sheets\SD-B-126300.dwg

THIS DOCUMENT HAS BEEN PRODUCED FROM MATERIAL THAT WAS STORED AND/OR TRANSMITTED ELECTRONICALLY AND MAY HAVE BEEN INADVERTENTLY ALTERED. RELY ONLY ON FINAL HARD COPY MATERIALS BEARING THE CONSULTANT'S ORIGINAL SIGNATURE AND SEAL. AERIAL IMAGERY PROVIDED BY GOOGLE/UNLESS OTHERWISE NOTED. Imagery © 2016, CAROL Digital Globe, Texas Orthographic Program, USDA Farm Service Agency.