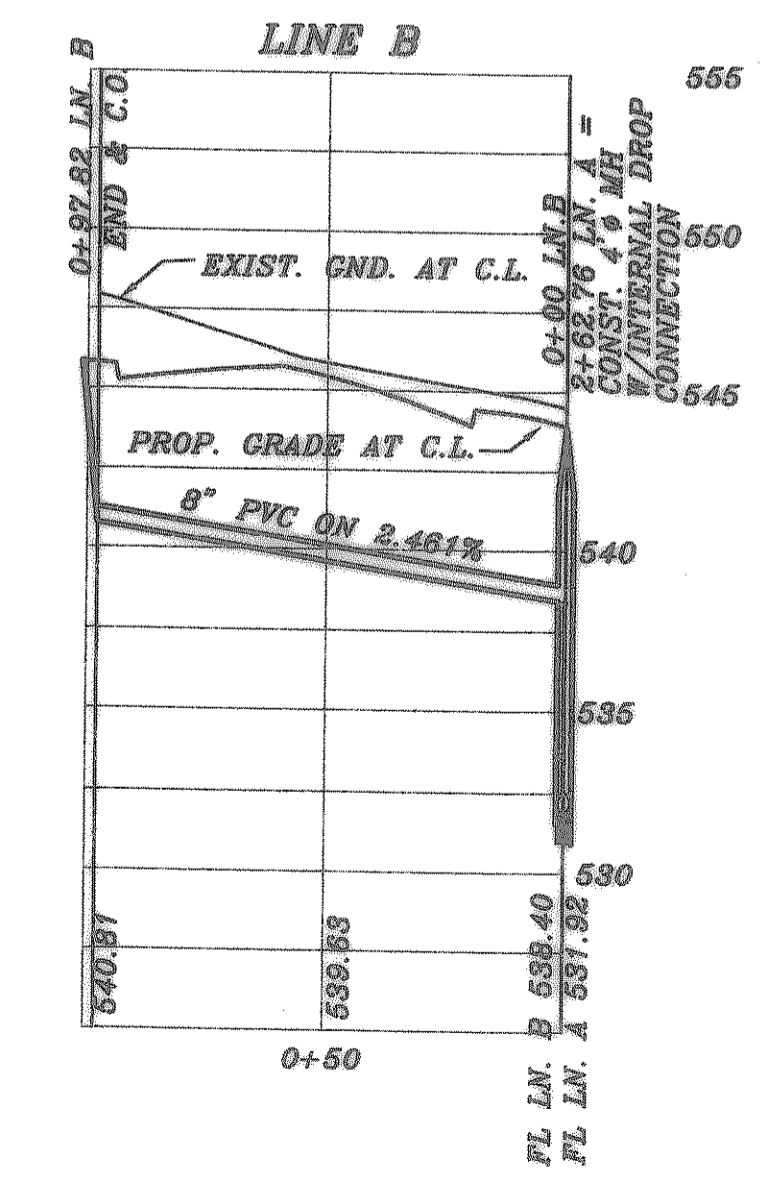
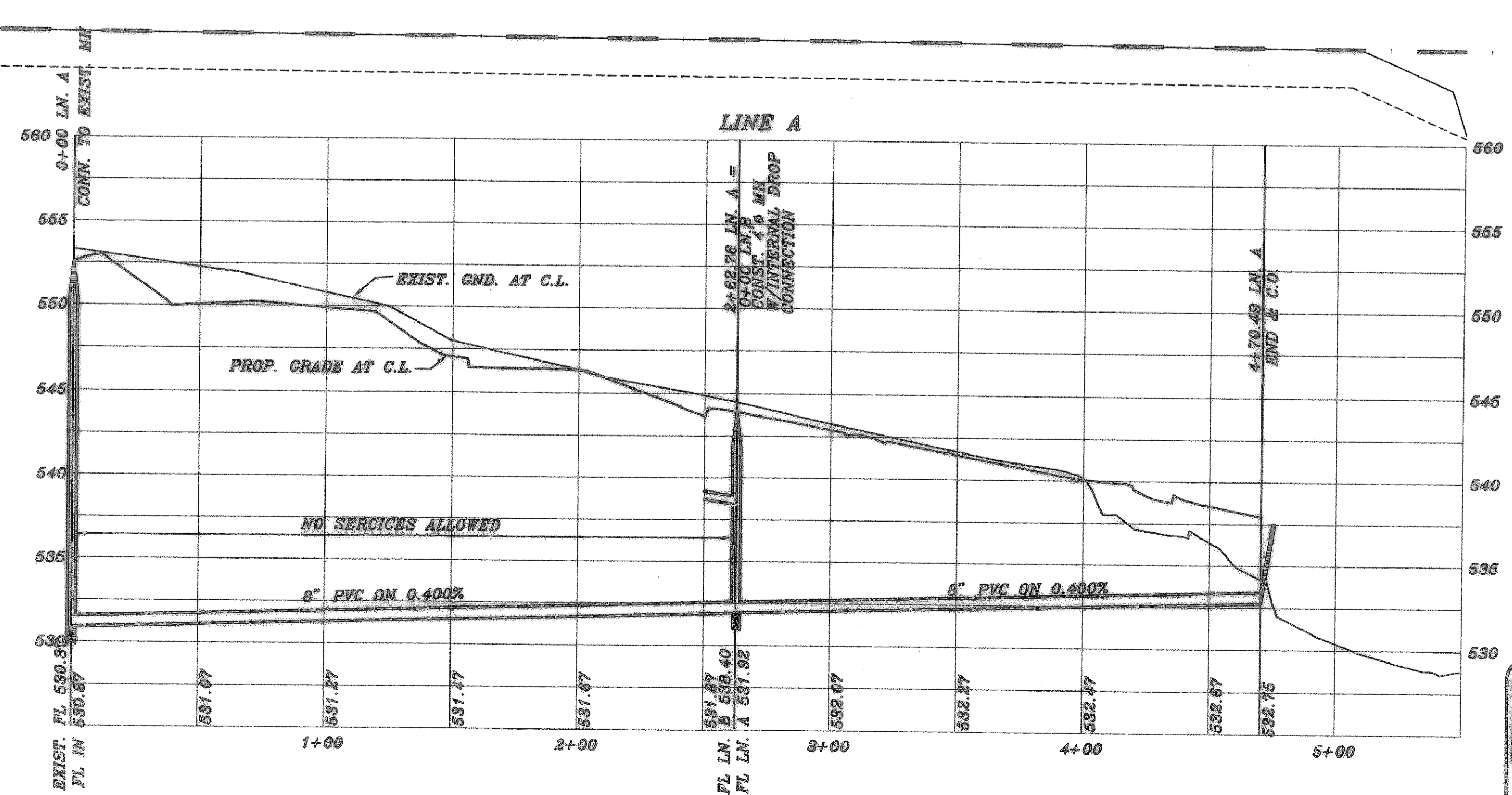
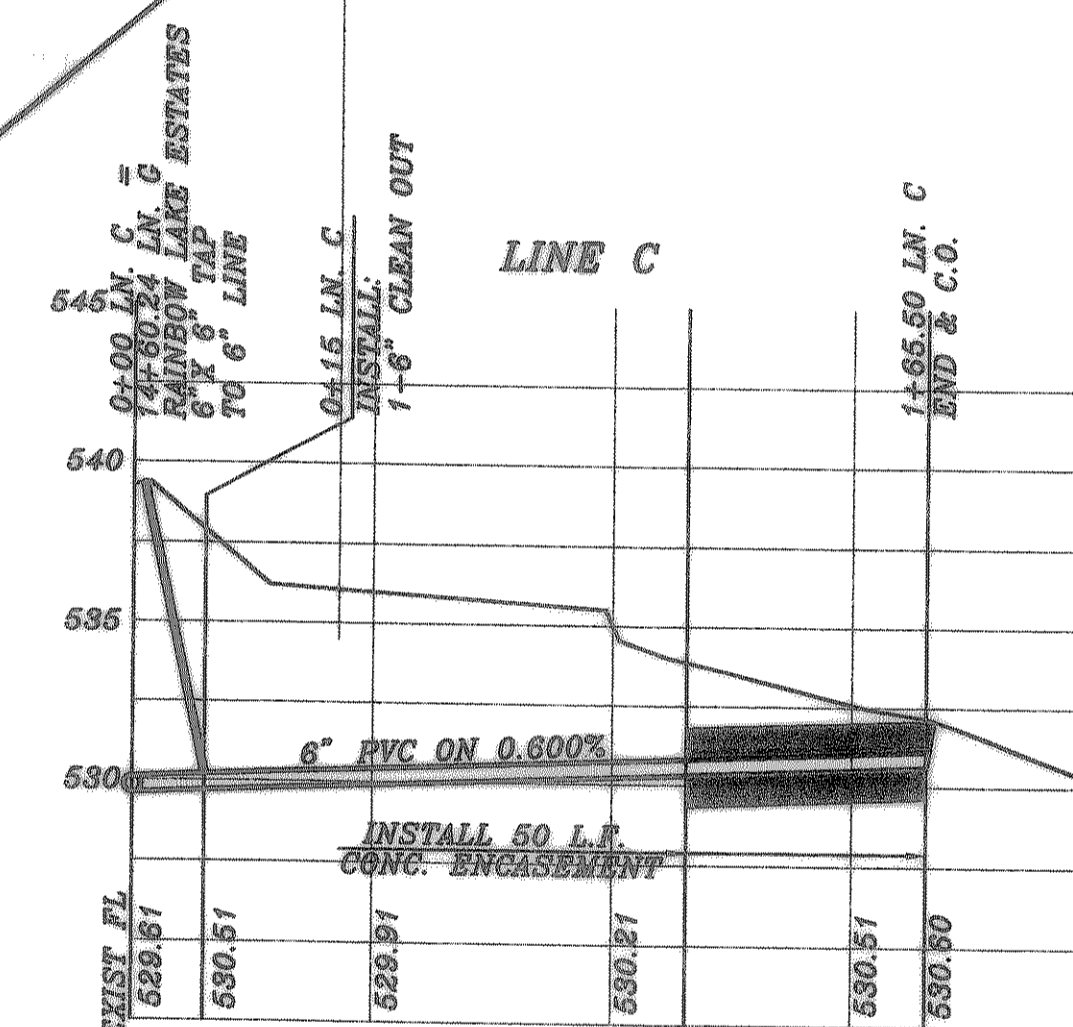
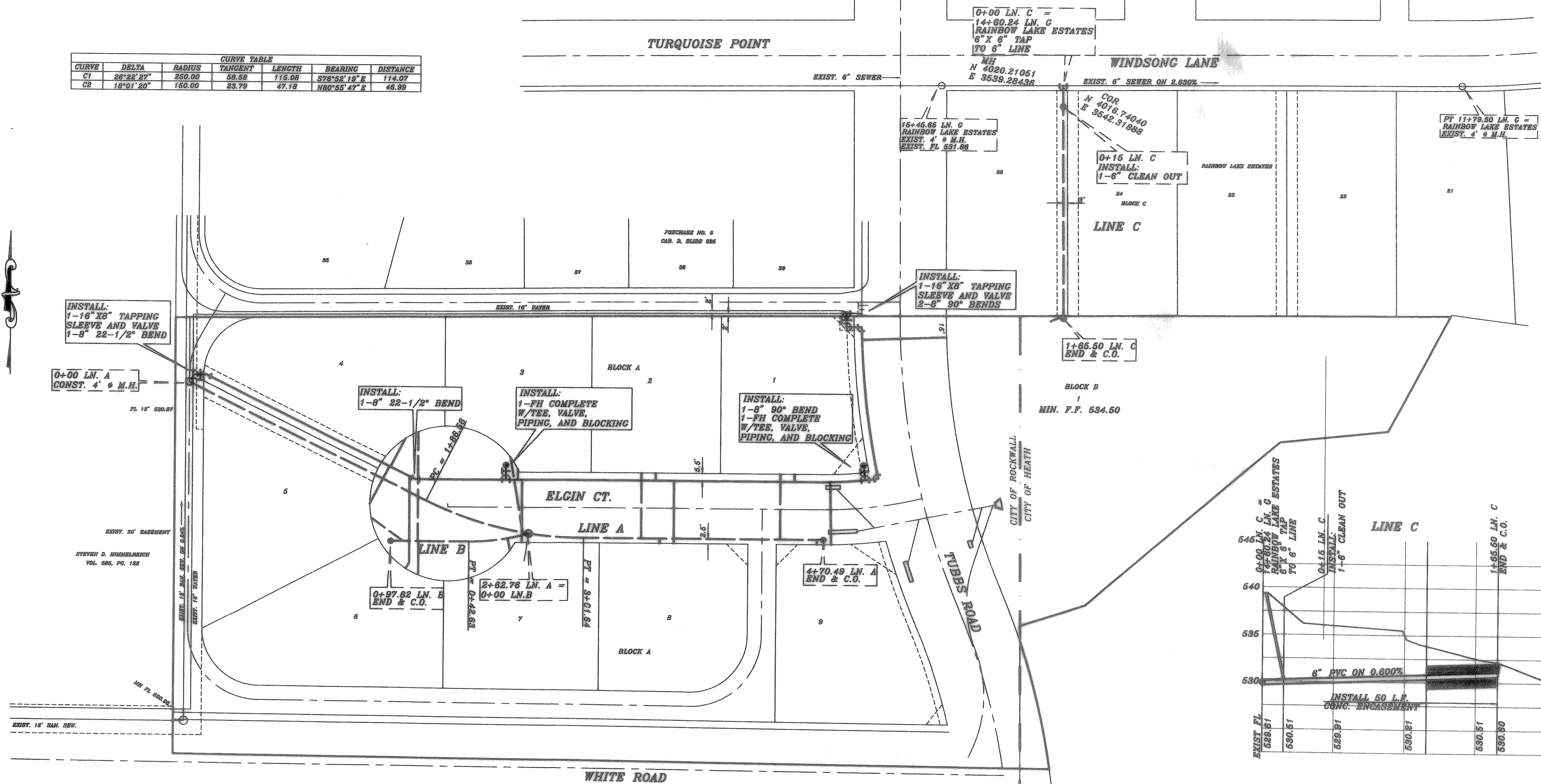
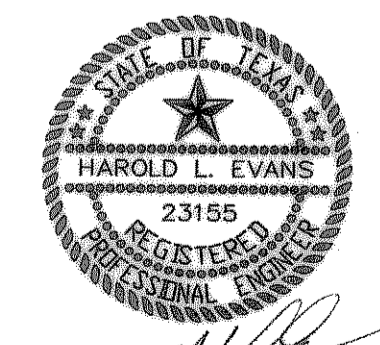


CURVE	CURVE TABLE					
	DELTA	RADIUS	TANGENT	LENGTH	BEARING	DISTANCE
C1	26°22'27"	250.00	59.59	116.06	S76°52'13"E	114.07
C2	18°01'20"	150.00	23.79	47.18	N80°55'47"E	48.99



AS-BUILT



CITY OF ROCKWALL MONUMENT:  
BRASS DISK ON TOP OF 10' CURB  
INLET ON THE NORTH SIDE OF  
ELGIN CT. AT THE NORTHWEST CORNER  
OF THE INTERSECTION OF ELGIN CT. AND  
TUBBS ROAD  
N 7009919.8971  
E 2697478.7812  
ELEV: 537.22

HAROLD L. EVANS CONSULTING ENGINEER P.O. BOX 670366 2331 CUS THOMASSON ROAD, SUITE 102 DALLAS, TEXAS 75270, (214) 320-8133		<b>PROPOSED UTILITIES</b>  <b>FOXCHASE NO. 7</b> <b>CITY OF ROCKWALL</b>		SHEET NO. 8  11  JOB NO. 98111
REV. 3/9/05 REV. 11/4/04	DATE 9/28/03	SCALE 1" = 40' 1" = 6'	DESIGN H.L.E. DRAWN	
REVISION DESCRIPTION FOXT VBS1				

C:\PROJECTS\FOX\FOX 7\FOX VBS1.dwg, 02/02/06 09:10:44 PM, GCY