

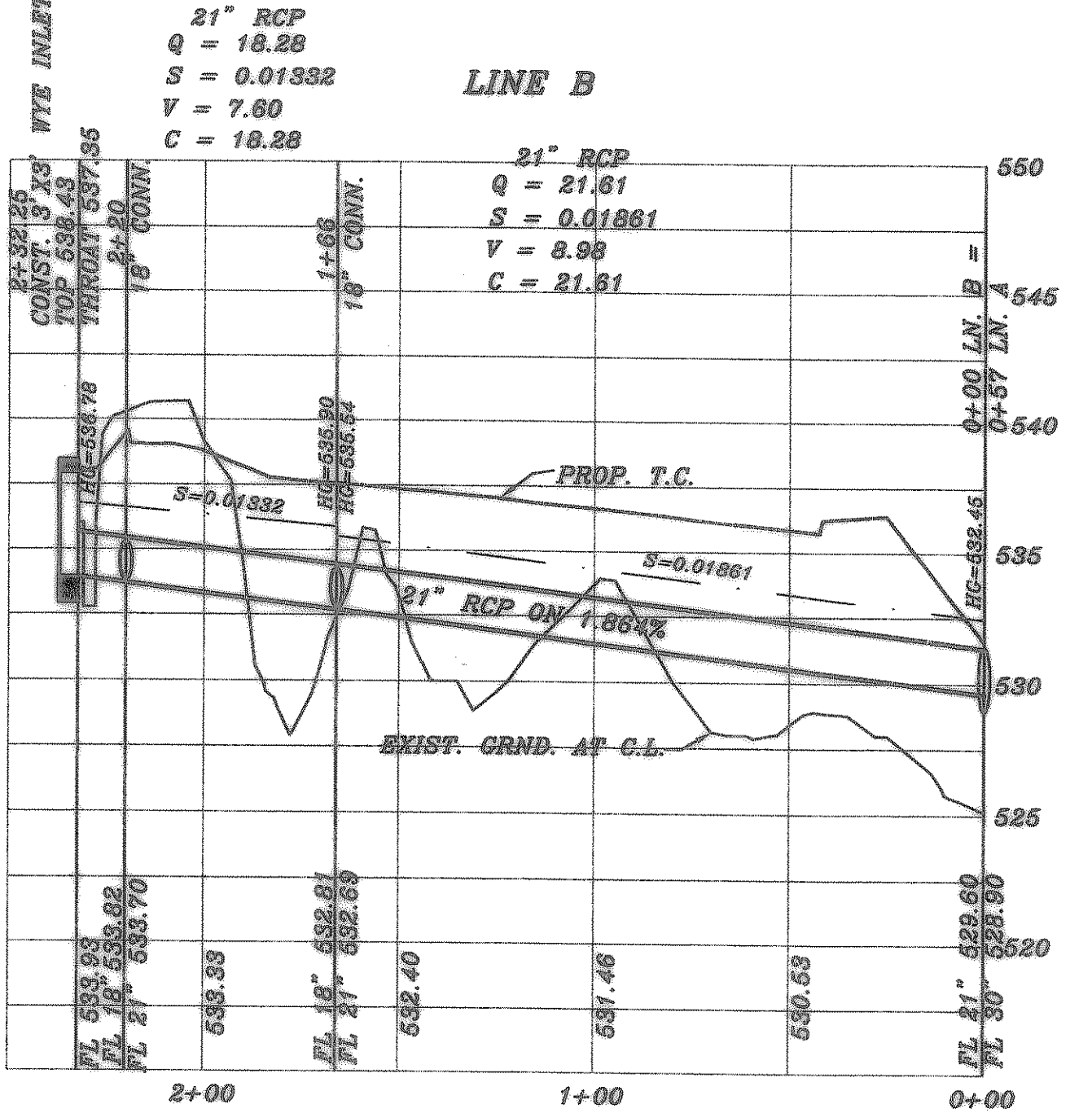
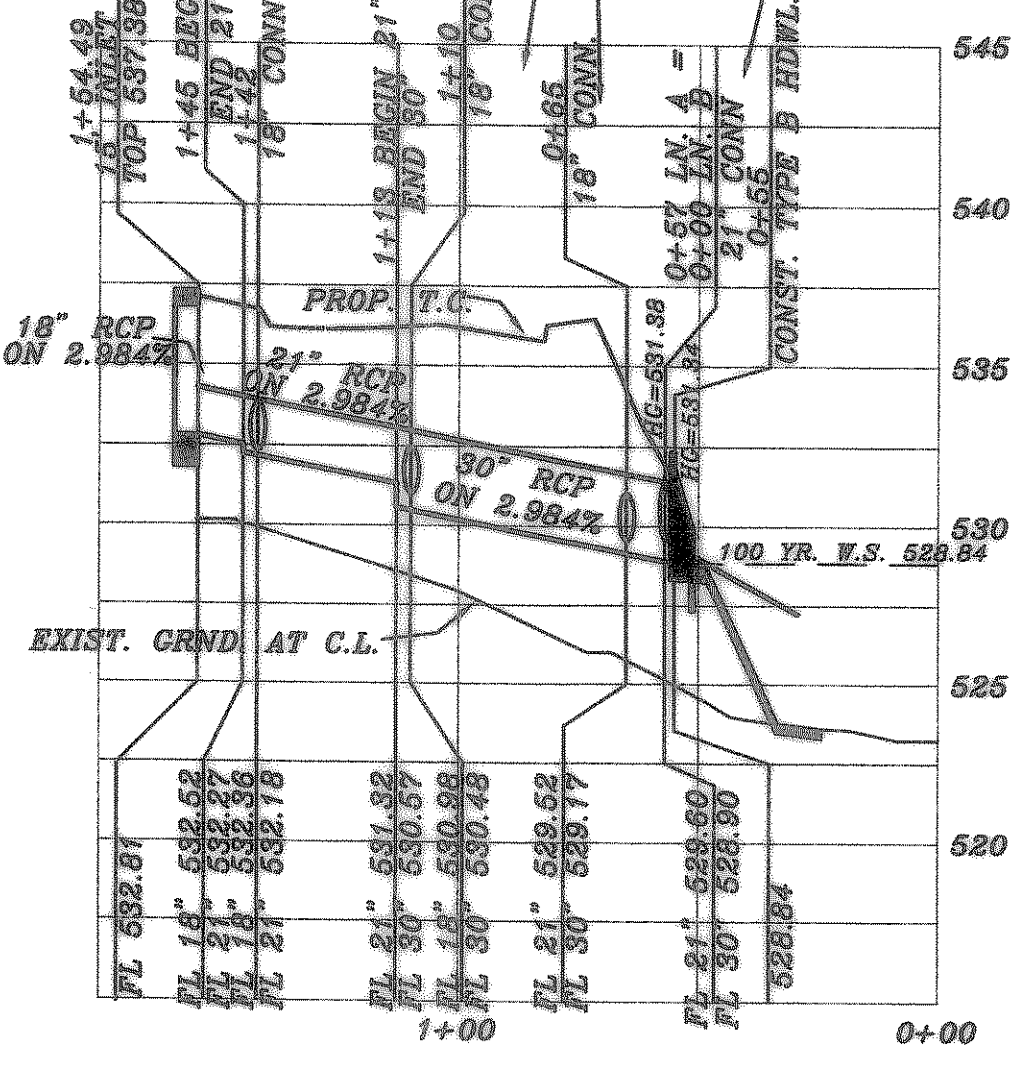
**LINE A**

21" RCP  
 $Q = 17.89$   
 $S = 0.02984$   
 $V_p = 7.88$   
 $d = 12.4"$

30" RCP ULTIMATE  
 $Q = 34.46$   
 $S = 0.02984$   
 $V_p = 7.02$   
 $d = 15"$

30" RCP ULTIMATE  
 $Q = 38.48$   
 $S = 0.02984$   
 $V_p = 7.92$   
 $d = 14.4"$

30" RCP ULTIMATE  
 $Q = 60.09$   
 $S = 0.02147$   
 $V = 12.24$   
 $C = 60.09$



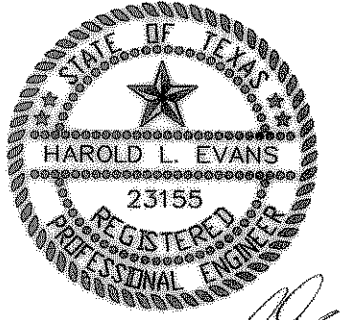
CURVE TABLE						
CURVE	DELTA	RADIUS	TANGENT	LENGTH	BEARING	DISTANCE
C1	39°50'10"	90.00	32.61	62.57	S01°43'42" E	61.32
C2	49°55'16"	90.00	41.94	76.50	N03°20'22" E	76.03

CITY OF ROCKWALL MONUMENT:  
 BRASS DISK ON TOP OF 10' CURB  
 INLET ON THE NORTH SIDE OF ELCIN  
 CT. AT THE NORTHWEST CORNER OF  
 THE INTERSECTION OF ELCIN CT. AND  
 TUBBS ROAD

N 7009919.8971  
 E 2597478.7812

ELEV: 537.22

AS-BUILT



HAROLD L. EVANS CONSULTING ENGINEER P.O. BOX 670555 2331 GUS THOMASSON ROAD, SUITE 102 DALLAS, TEXAS 75370, (214) 328-9133		<b>PROPOSED DRAINAGE</b>		SHEET NO. 7	
REVISION DESCRIPTION 8/9/04 9/22/03		DATE 8/9/04 9/22/03	SCALE 1" = 40' 1" = 6'	DESIGN H.L.E.	DRAWN
FOXCHASE NO. 7 CITY OF ROCKWALL				JOB NO. 98111	

2/06