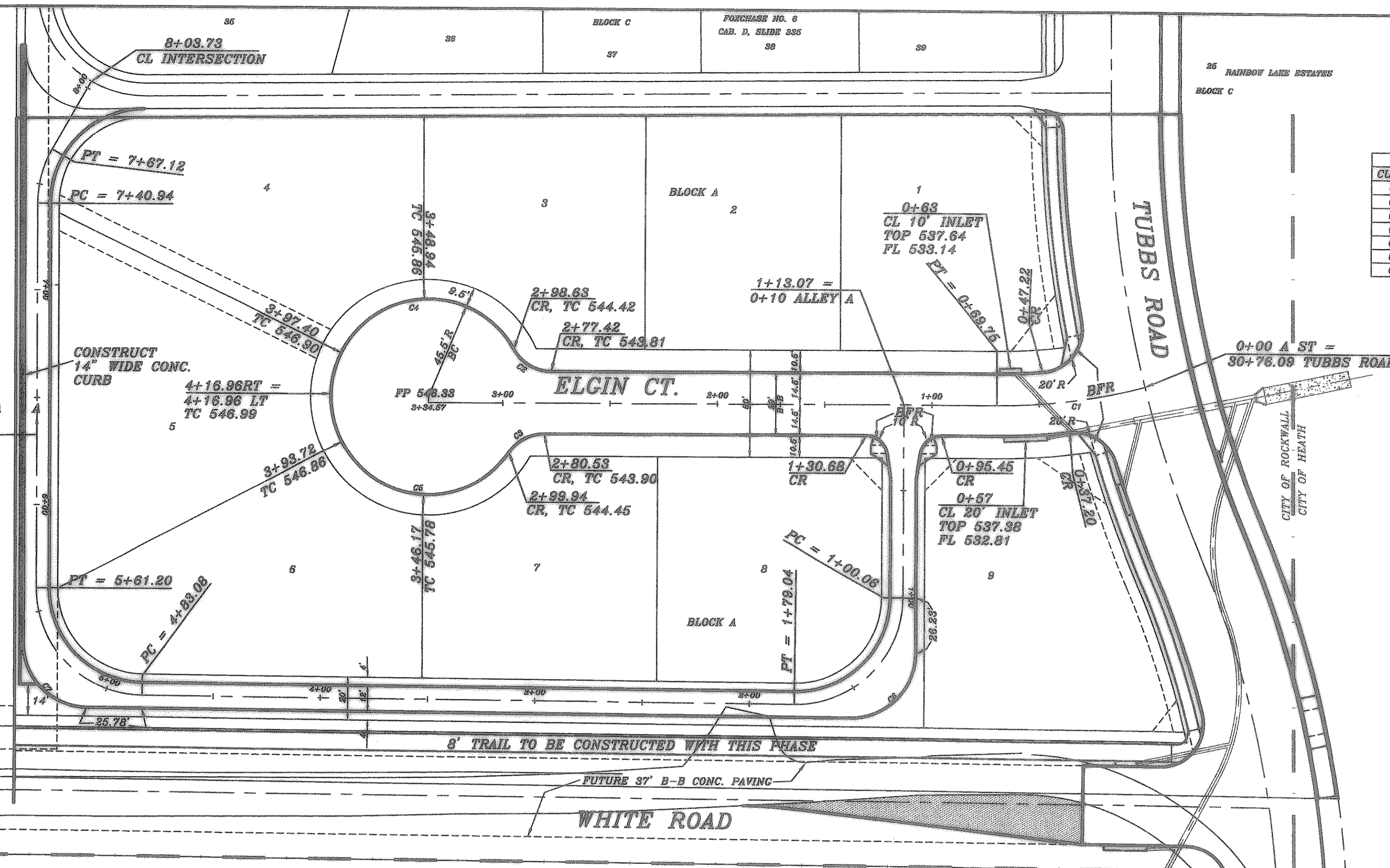
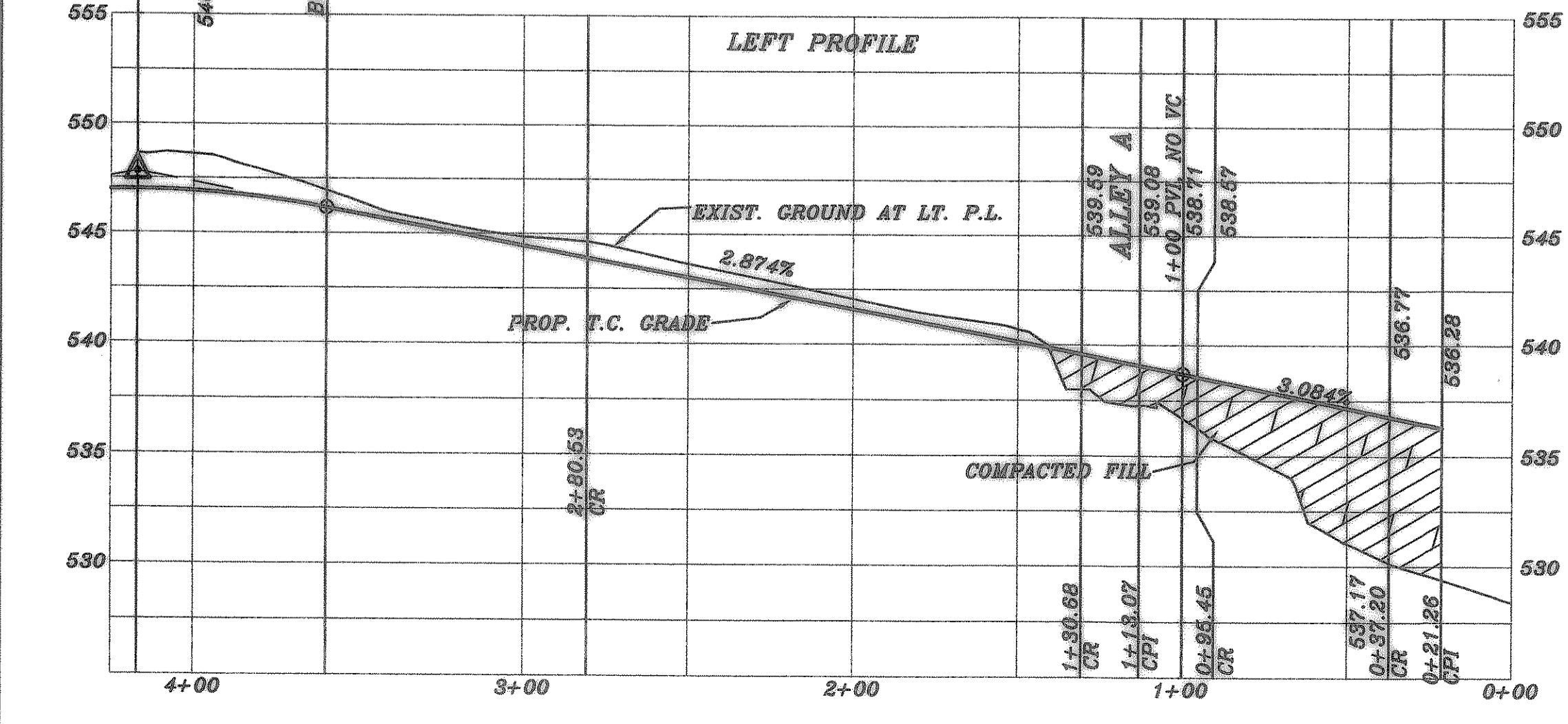
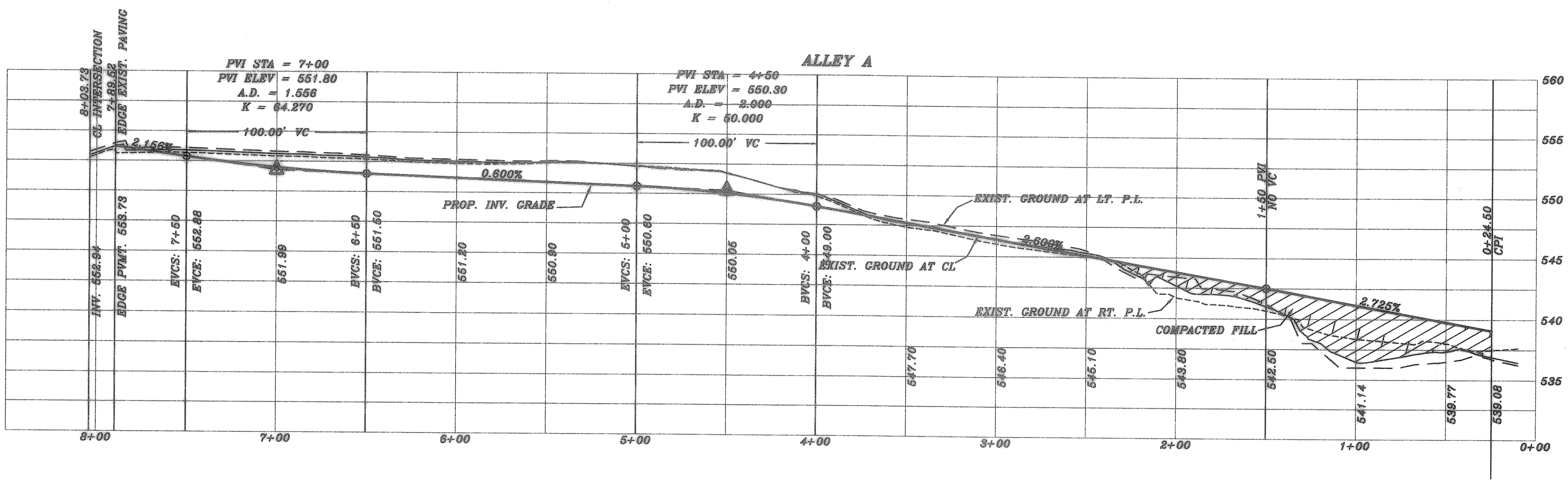
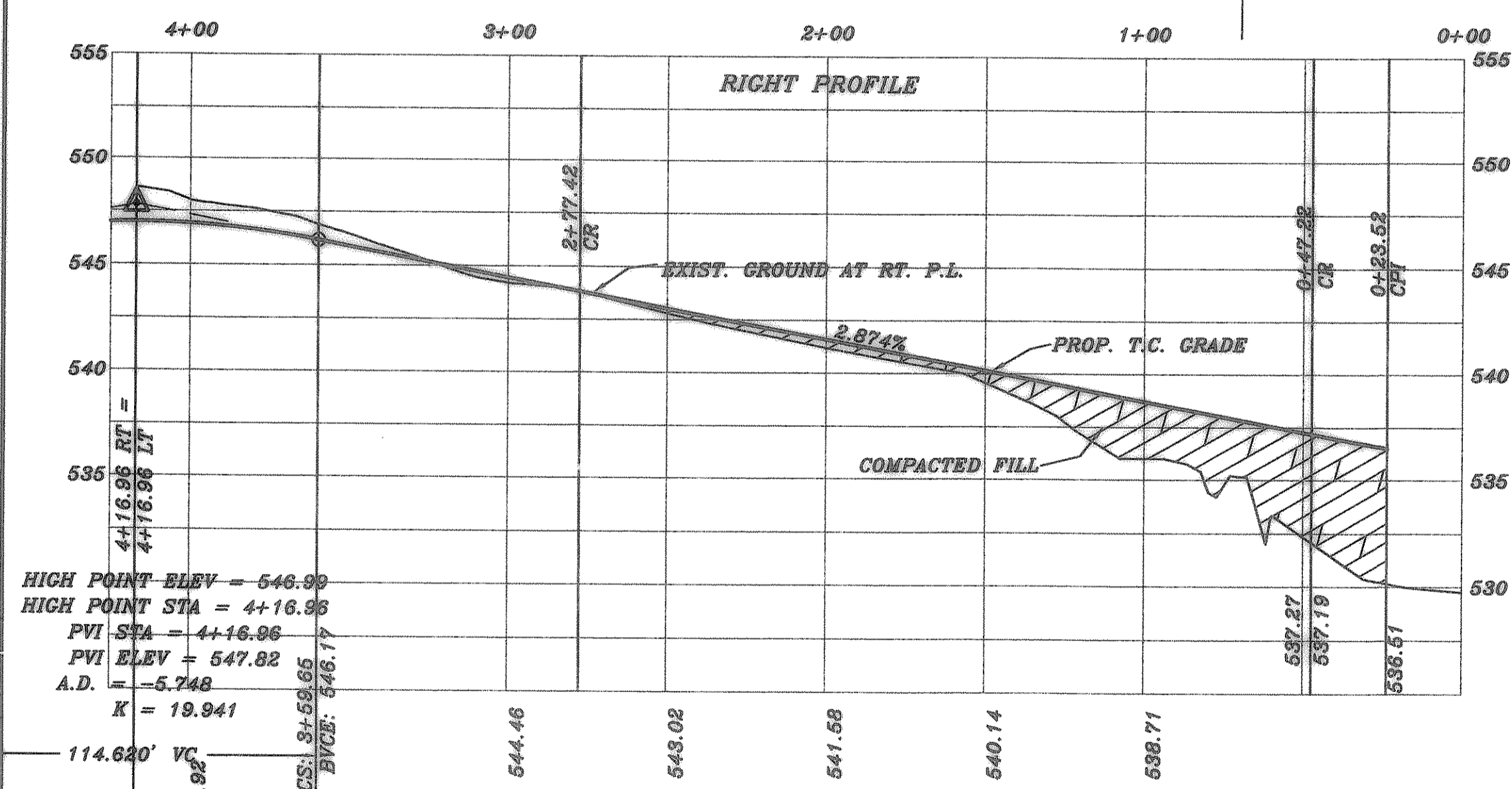


CURVE TABLE						
CURVE	DELTA	RADIUS	TANGENT	LENGTH	BEARING	DISTANCE
C1	14°10'17"	282.02	35.08	89.75	N82°51'19" E	89.58
C2	80°45'17"	20.00	11.72	21.21	S69°40'54" E	20.23
C3	55°38'20"	20.00	10.55	19.41	S62°08'17" W	18.66
C4	149°00'18"	45.50	184.10	118.33	S76°11'36" W	87.89
C5	147°21'19"	45.50	155.37	117.02	S71°59'14" E	87.93
C6	90°30'18"	30.00	30.27	47.39	N45°11'38" E	42.81
C7	89°30'45"	30.00	28.75	46.87	S44°47'58" E	42.25



NOTE:  
BFR = BARRIER FREE RAMP



CITY OF ROCKWALL MONUMENT:  
BRASS DISK ON TOP OF 10' CURB  
INLET ON THE NORTH SIDE OF ELGIN  
CT. AT THE NORTHWEST CORNER OF  
THE INTERSECTION OF ELGIN CT. AND  
TUBBS ROAD  
N 7009919.8971  
E 2597478.7812  
ELEV: 537.22

AS-BUILT



REV.	11/4/04	<b>HAROLD L. EVANS</b> CONSULTING ENGINEER P.O. BOX 570355 2331 GUS THOMASSON ROAD, SUITE 102 DALLAS, TEXAS 75270, (214) 388-8133	<b>PROPOSED PAVING</b> <b>ELGIN CT. AND ALLEY A</b> <b>FOXCHASE NO. 7</b> <b>CITY OF ROCKWALL</b>		SHEET NO.
REV.	9/19/04				4
REV.	8/7/04				JOB NO.
REV.	10/22/03				98111
REVISION DESCRIPTION	DATE	SCALE	DESIGN	DRAWN	
	9/22/03	1" = 40' 1" = 6'	H.L.E.		