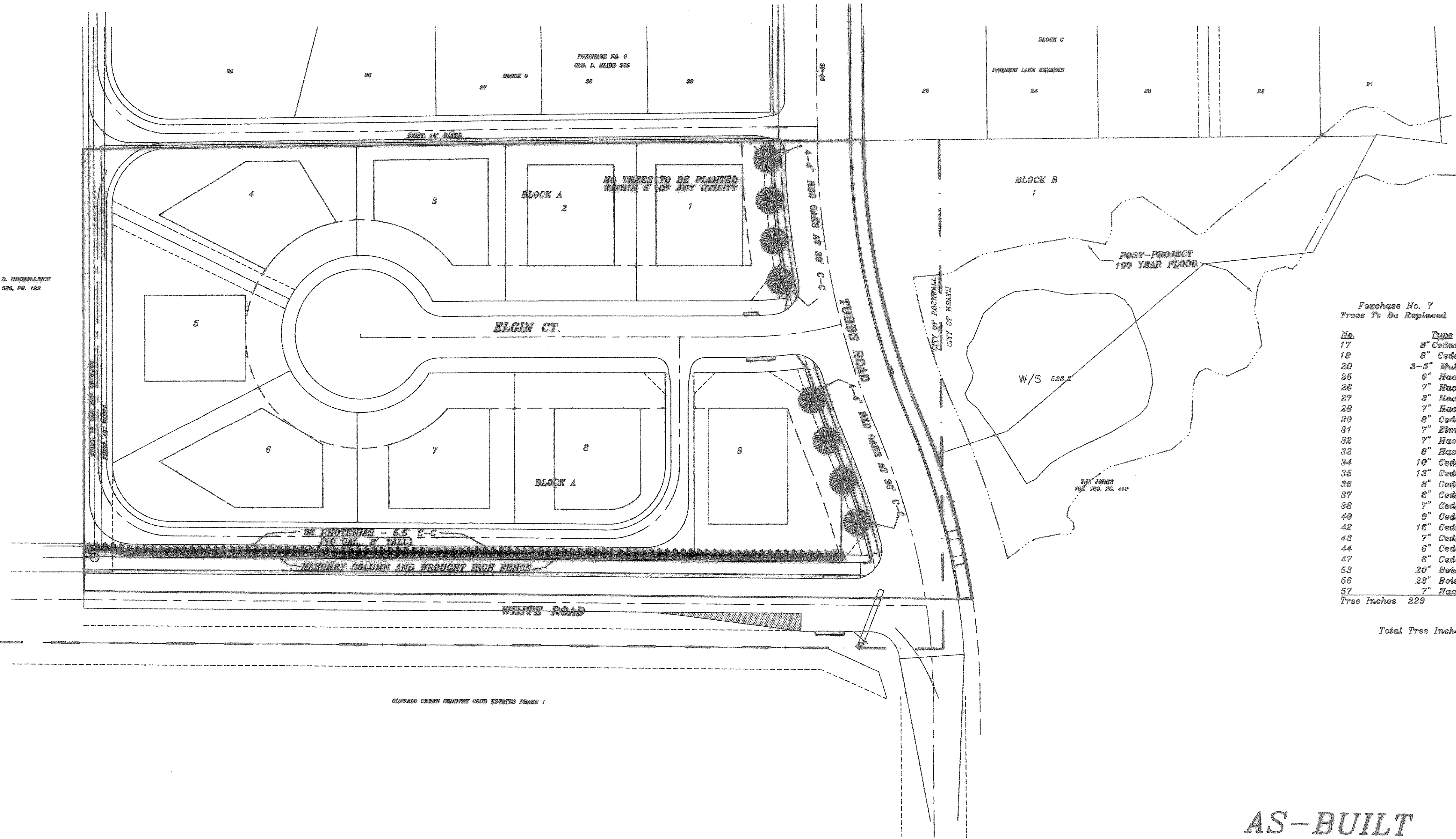




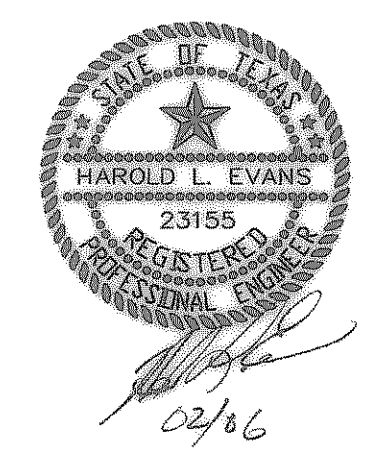
STEVEN D. HINDENBACH
VOL. 086, PG. 182



Foxchase No. 7 Trees To Be Replaced		Foxchase No. 7 Trees To Be Replaced	
No.	Type	No.	Type
17	8" Cedar	60	8" Hackberry
18	8" Cedar	61	8" Cedar
20	3-5" Mulberry	63	10" Cedar
25	6" Hackberry	65	8" Ash
26	7" Hackberry	67	7" Hackberry
27	8" Hackberry	68	7" Hackberry
28	7" Hackberry	70	9" Hackberry
30	8" Cedar	71	9" Hackberry
31	7" Elm	81	18" Cedar
32	7" Hackberry	82	18" Cedar
33	8" Hackberry	83	7" Cedar
34	10" Cedar	84	6" Cedar
35	13" Cedar	85	7" Cedar
36	8" Cedar	86	8" Cedar
37	8" Cedar	87	10" Cedar
38	7" Cedar	88	8" Cedar
40	9" Cedar	89	6" Cedar
42	16" Cedar	90	6" Cedar
43	7" Cedar	91	6" Twin Cedar
44	6" Cedar	92	6" Cedar
47	6" Cedar	93	7" Cedar
53	20" Bois d'Arc	94	6" Cedar
56	23" Bois d'Arc	95	7" Cedar
57	7" Hackberry	99	7" Cedar
Tree Inches 229		Tree Inches 205	

Total Tree Inches To Be Replaced 434

AS-BUILT



HAROLD L. EVANS CONSULTING ENGINEER P.O. BOX 570255 2831 GUS THOMASSON ROAD, SUITE 102 DALLAS, TEXAS 75290, (214) 328-8138		TREESCAPE PLAN TUBBS ROAD FOXCHASE NO. 7 CITY OF ROCKWALL		SHEET NO. 10A 11
REV. 1/5/06	DATE 8/31/04	SCALE 1" = 40' 1" = 6'	DESIGN H.L.E.	JOB NO. 98111