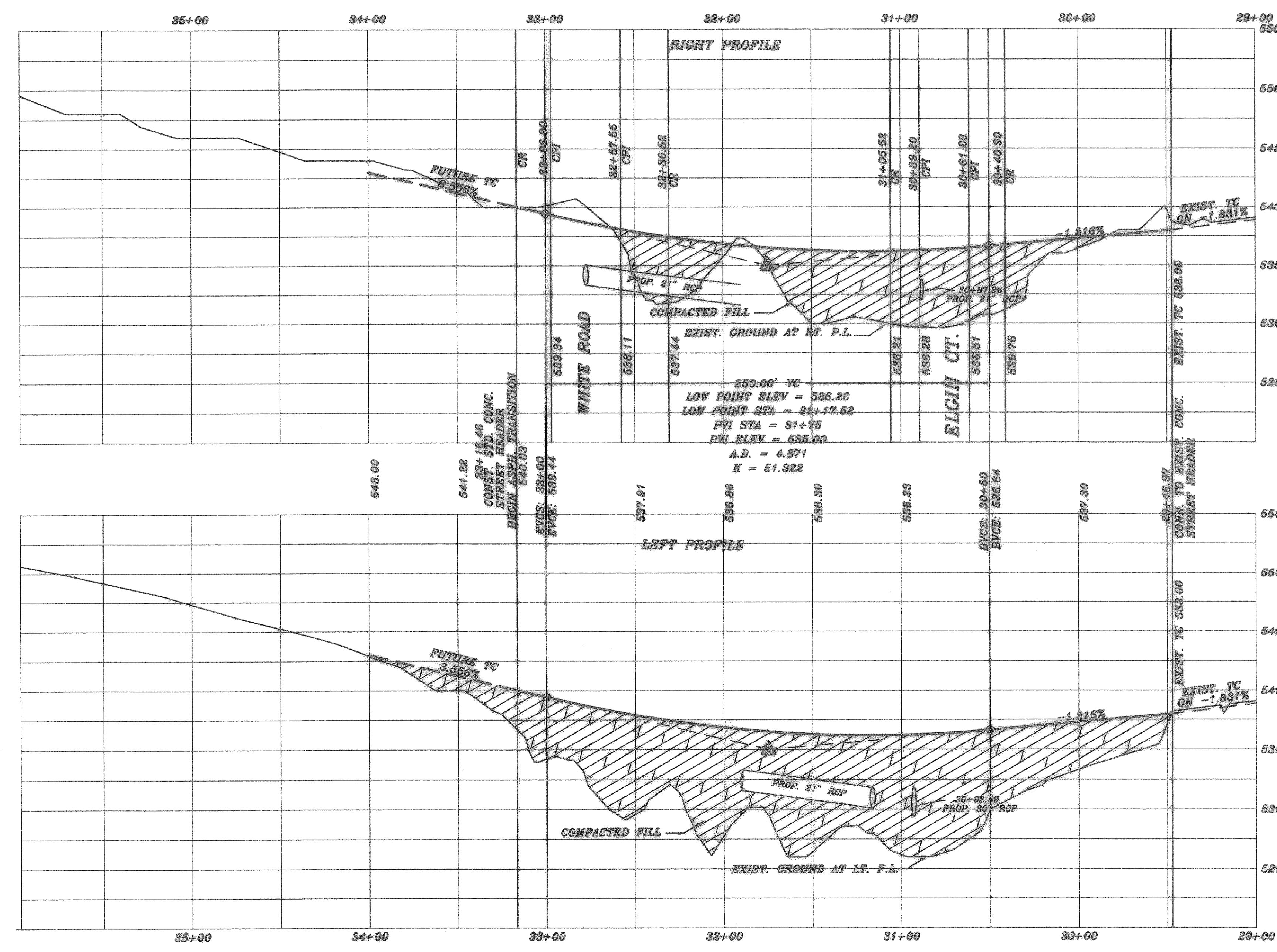
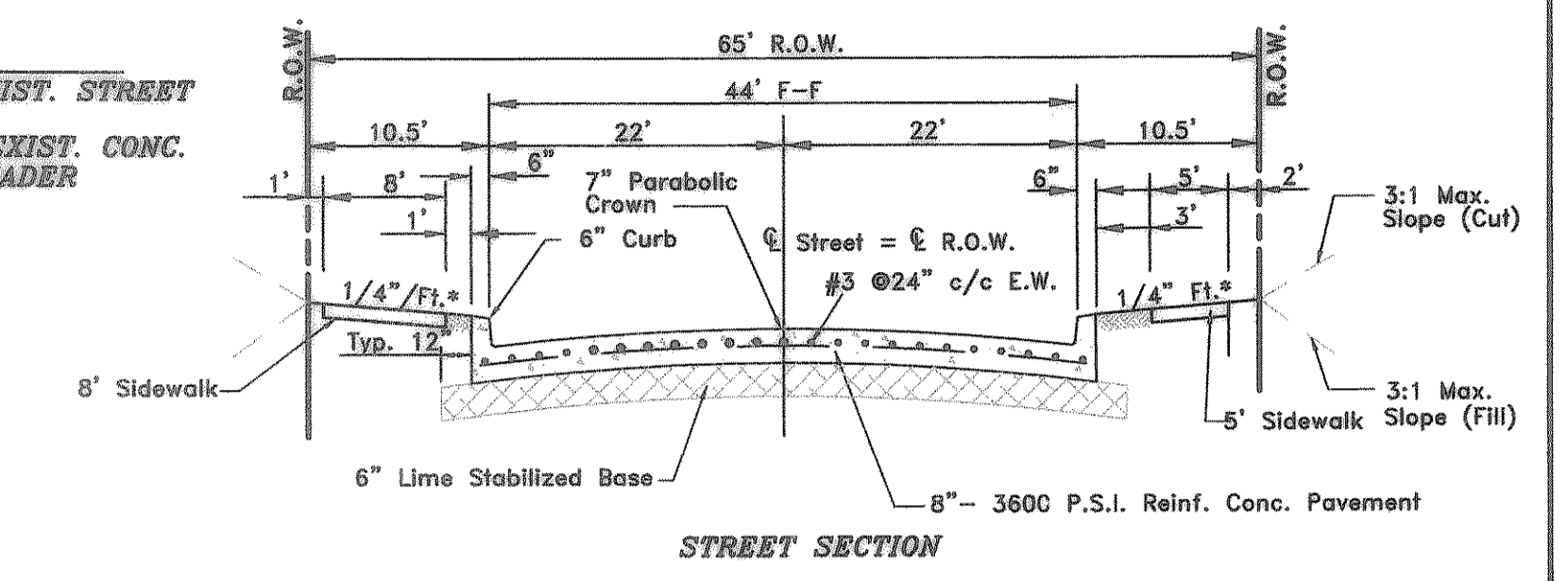
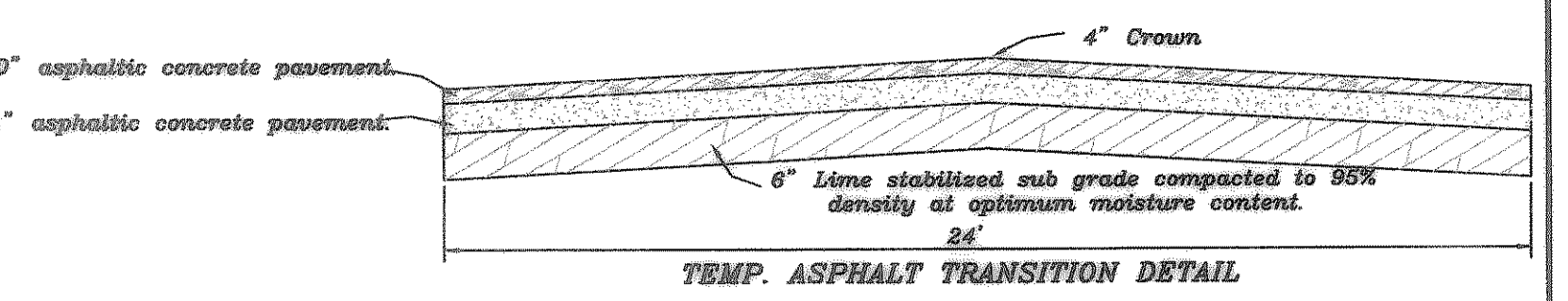
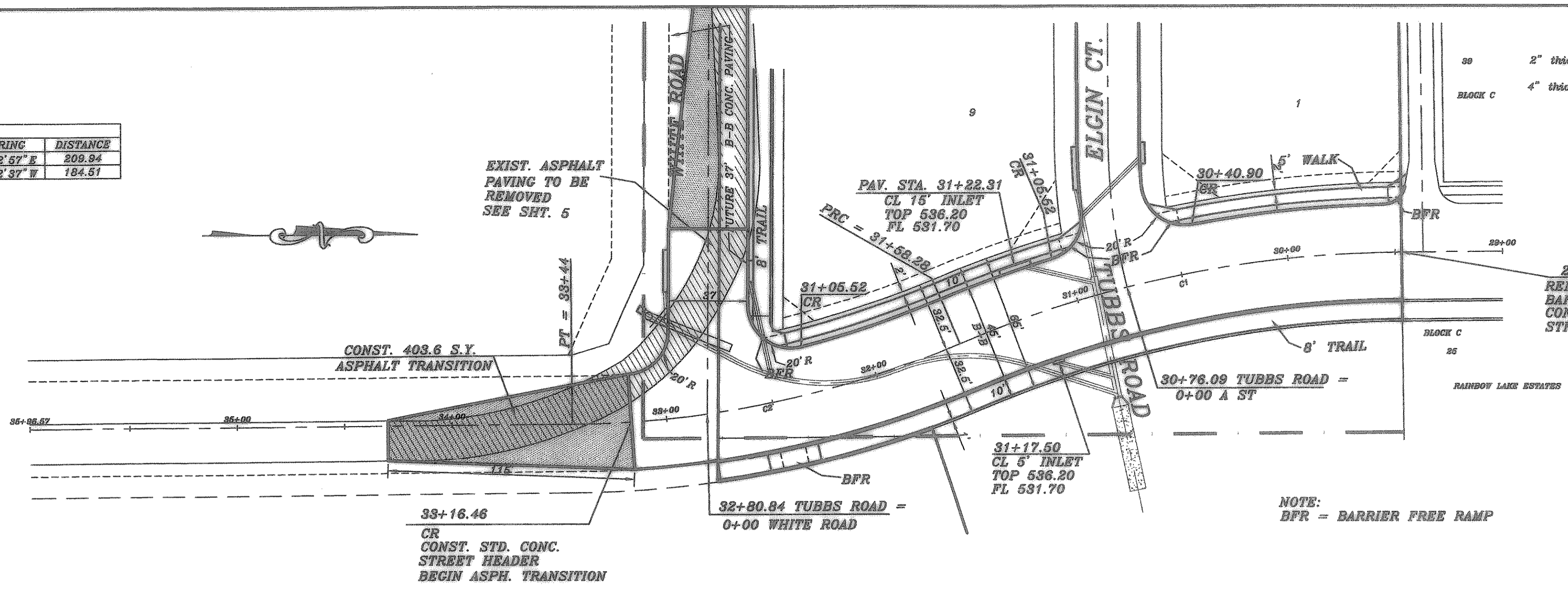
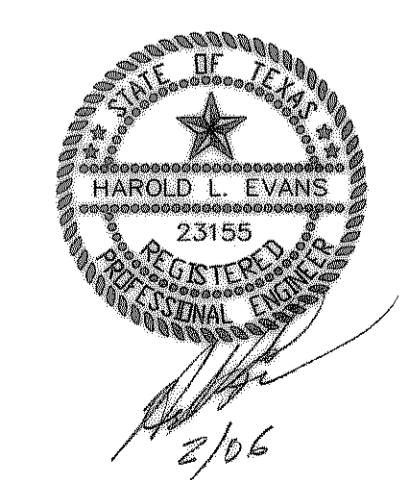


CURVE TABLE						
CURVE	DELTA	RADIUS	TANGENT	LENGTH	BEARING	DISTANCE
C1	22°38'41"	534.87	107.05	211.31	S11°42'57" E	209.84
C2	22°39'21"	469.87	84.09	185.72	N11°42'37" W	184.51



CITY OF ROCKWALL MONUMENT.
BRASS DISK ON TOP OF 10' CURB
INLET ON THE NORTH SIDE OF ELGIN
CT. AT THE NORTHWEST CORNER OF
THE INTERSECTION OF ELGIN CT. AND
TUBBS ROAD
N 7009919.8971
E 2597478.7812
ELEV: 537.22

AS-BUILT



REV.	11/4/04	HAROLD L. EVANS CONSULTING ENGINEER P.O. BOX 670355 2331 CUS THOMASSON ROAD, SUITE 102 DALLAS, TEXAS 75270, (214) 328-8133	PROPOSED PAVING TUBBS ROAD FOXCHASE NO. 7 CITY OF ROCKWALL	SHEET NO.	3		
REV.	9/13/04			JOB NO.	11		
REV.	9/8/04			DATE	9/22/03	SCALE	1" = 40' 1" = 6'
REV.	10/22/03			DESIGN	H.L.E.	DRAWN	
REVISION DESCRIPTION		DATE	SCALE	DESIGN	DRAWN		
FOY P1		9/22/03	1" = 40' 1" = 6'	H.L.E.			