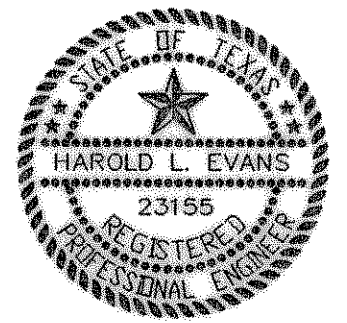
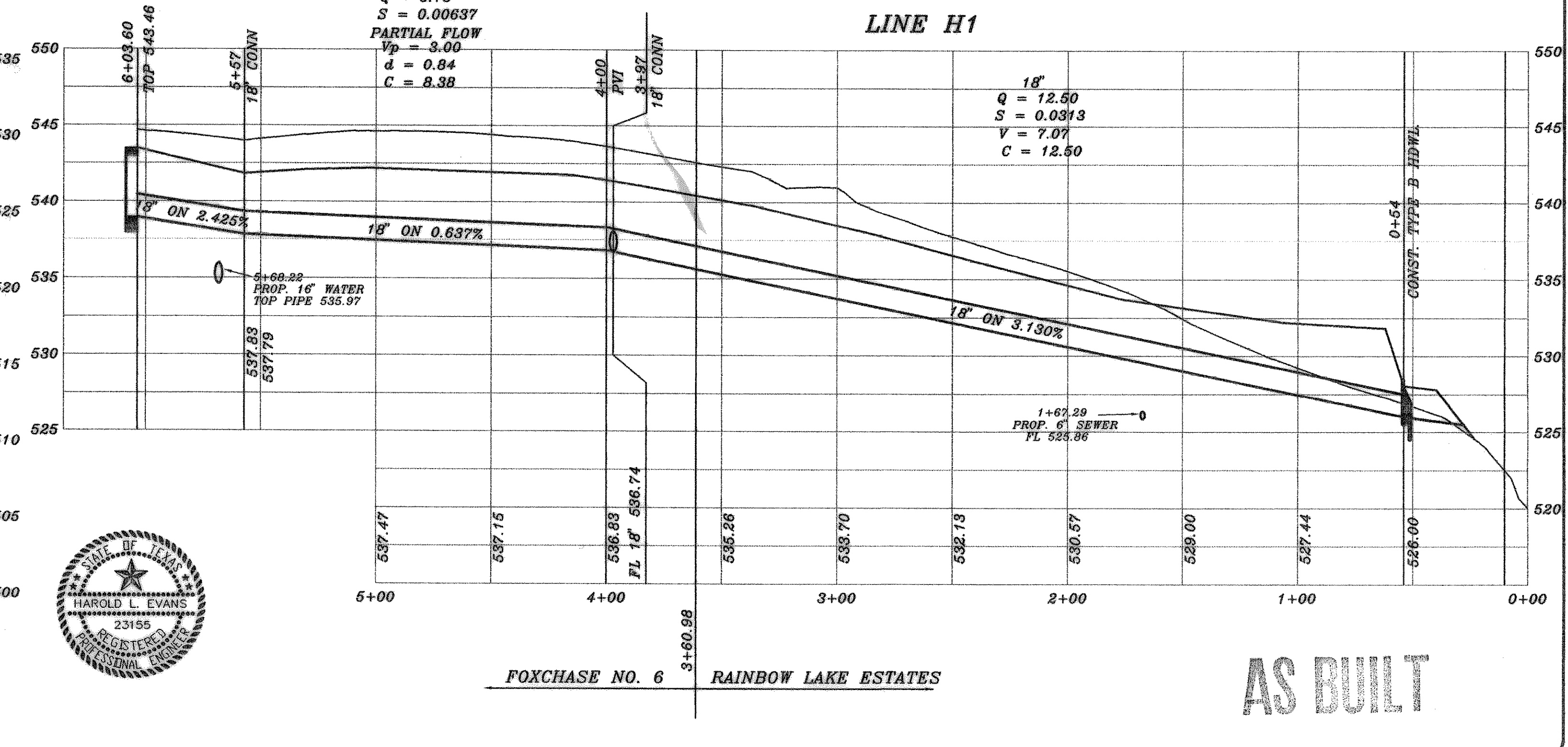
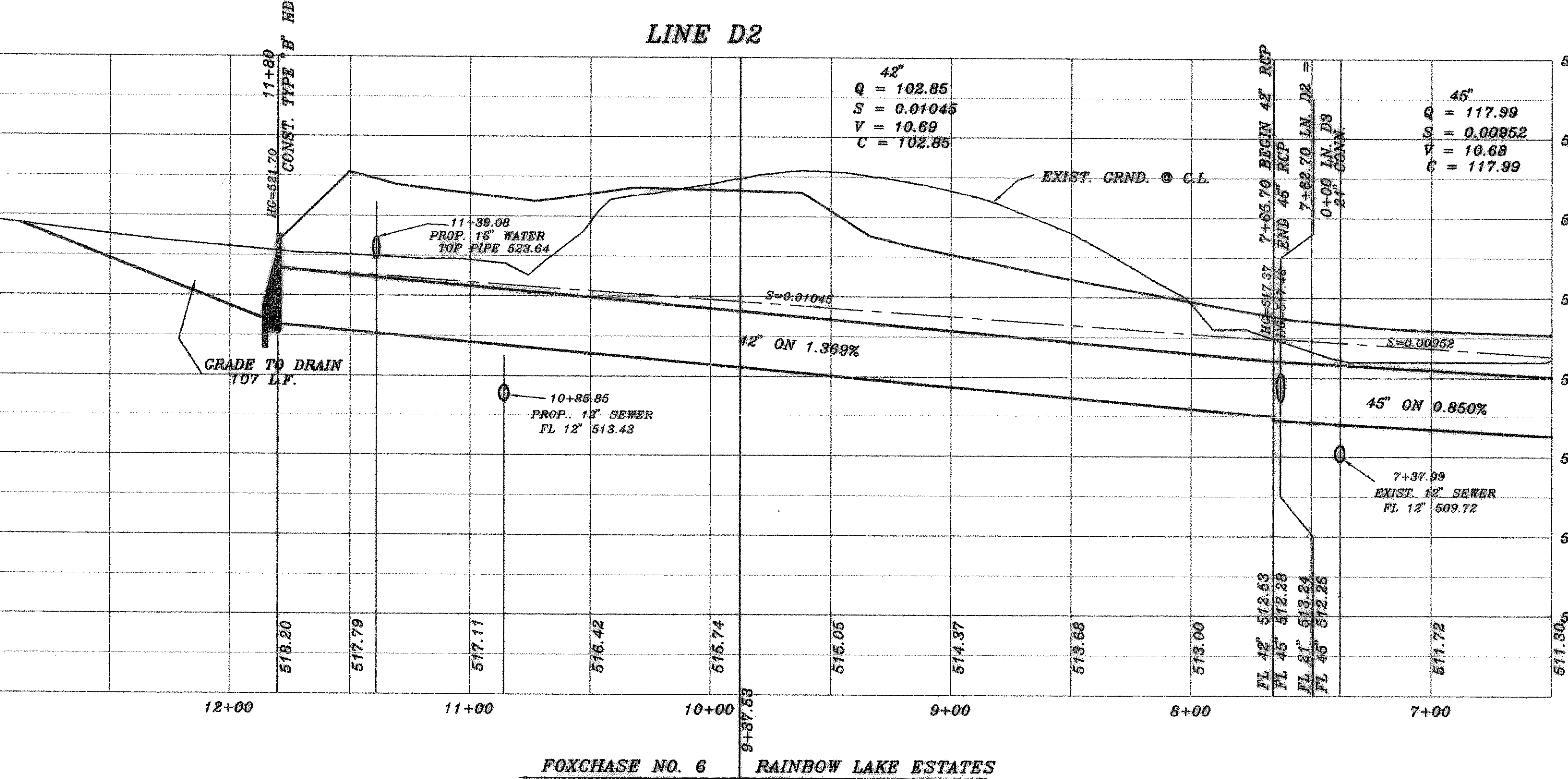
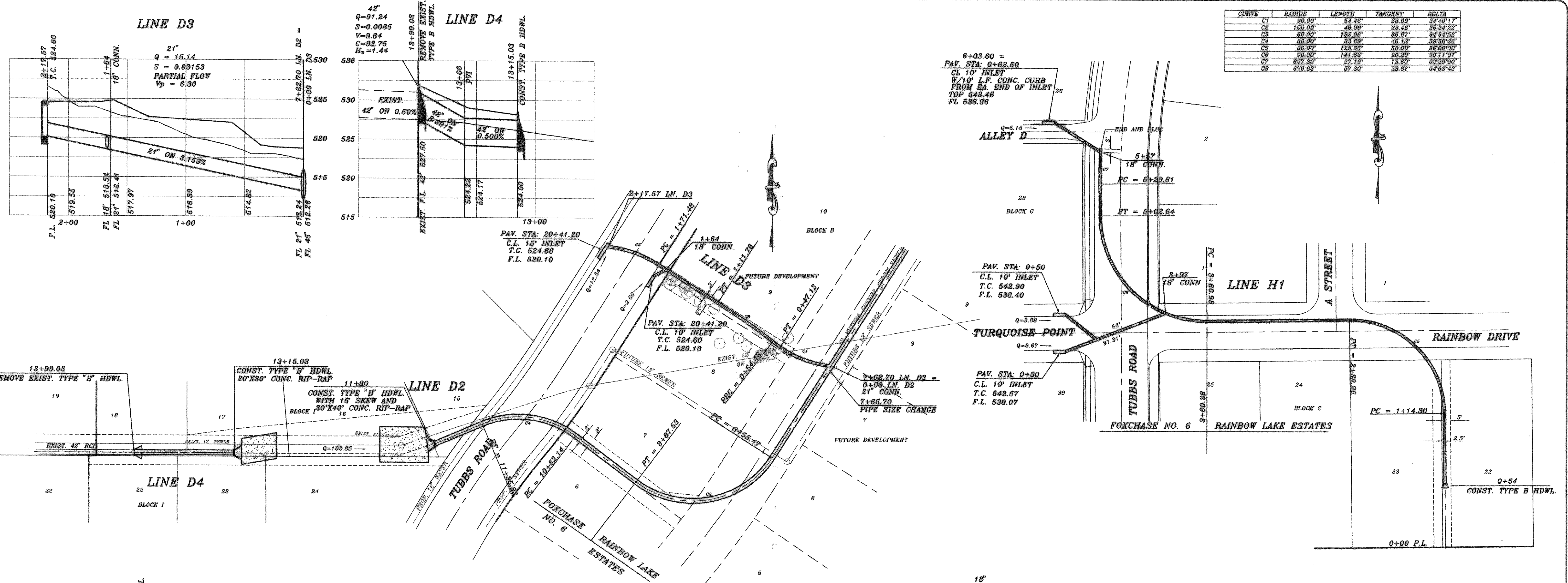


CURVE	RADIUS	LENGTH	TANGENT	DELTA
C1	90.00'	54.46'	28.09'	34°40'17"
C2	100.00'	46.09'	23.46'	26°24'22"
C3	80.00'	132.06'	86.67'	94°34'52"
C4	80.00'	83.63'	46.13'	57°59'25"
C5	80.00'	125.66'	80.00'	90°00'00"
C6	90.00'	141.66'	90.29'	90°11'07"
C7	827.30'	27.19'	13.80'	02°29'00"
C8	670.63'	57.30'	28.67'	04°53'43"



AS BUILT

REV.	DATE	DESCRIPTION
REV. LN. D3	3/10/00	
REV. PER 2nd. CITY REVIEW	12/8/99	
REV.	12/3/99	
REV. PER CITY REVIEW	10/30/99	
REV.	9/8/99	
REV.	8/29/99	

HAROLD L. EVANS
CONSULTING ENGINEER
P.O. BOX 29355
2331 GUS THOMASSON ROAD, SUITE 102
DALLAS, TEXAS 75228, (214) 328-8133

PROPOSED DRAINAGE
LINE D2
FOXCHASE NO. 6
CITY OF ROCKWALL

SHEET NO.	10
JOB NO.	98111