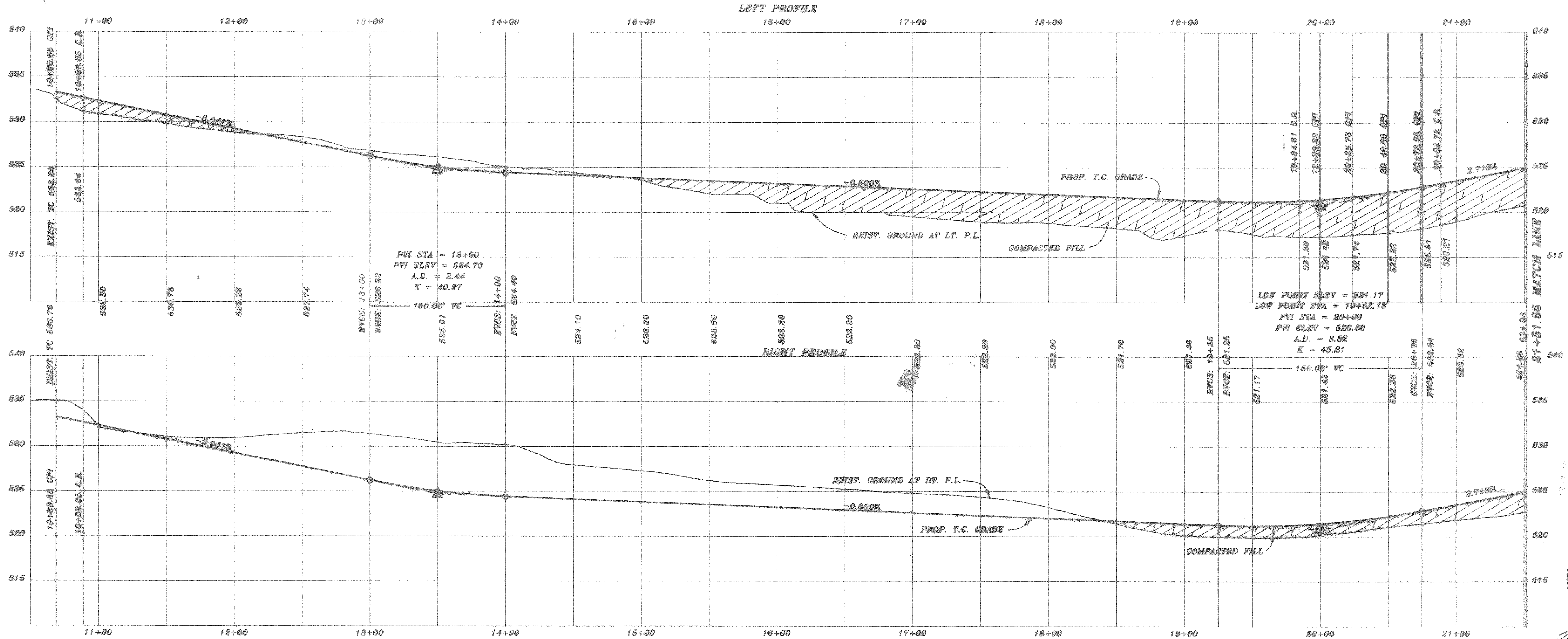
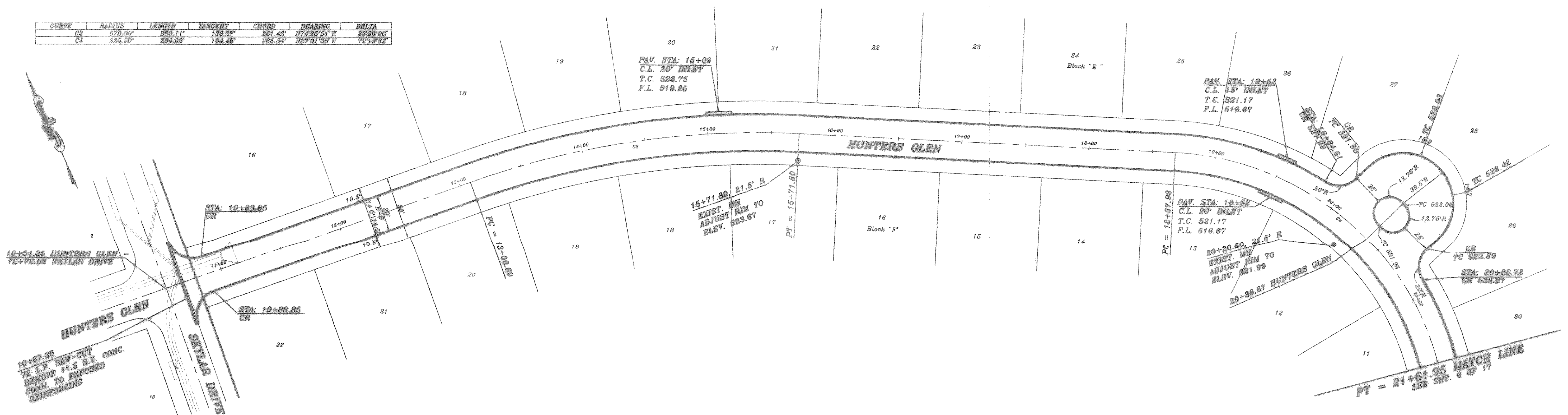


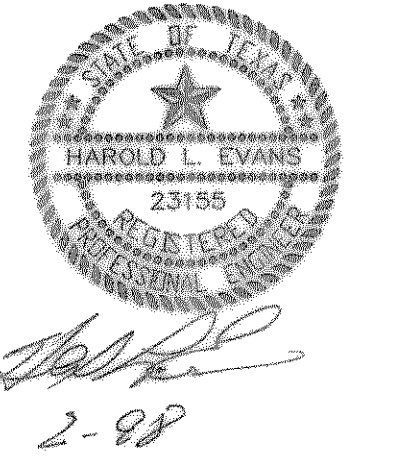
CURVE	RADIUS	LENGTH	TANGENT	CHORD	BEARING	DELTA
C3	573.00'	283.11'	133.27'	281.42'	N74°25'51" W	22°30'00"
C4	225.00'	284.02'	164.45'	265.54'	N27°01'05" W	72°19'32"



B.M.  
CITY OF ROCKWALL BRASS DISK ON  
N.E. CORNER OF 20' INLET ON WEST  
SIDE STERPLE CHASE LANE, 1.04' +/-  
SOUTH OF THE INTERSECTION OF STERPLE  
CHASE LANE AND OAK DRIVE.  
ELEV. 529.50

B.M.  
CITY OF ROCKWALL BRASS DISK ON  
N.W. CORNER OF 20' INLET ON WEST  
SIDE SKYLAR DRIVE, 75' +/- NORTH OF  
THE INTERSECTION OF SKYLAR DRIVE  
AND HUNTERS GLEN.  
ELEV. 522.88

HAROLD L. EVANS CONSULTING ENGINEER P.O. BOX 28585 2831 GUS THOMASSON ROAD, SUITE 102 DALLAS, TEXAS 75228, (214) 328-8133		<b>PROPOSED PAVING</b> <b>HUNTERS GLEN</b> <b>FOXCHASE PHASE 5</b> <b>CITY OF ROCKWALL</b>		SHEET NO. 6 17 JOB NO. 9781
REV. PER CITY REVIEW DATE 12/23/87	DATE 11/10/87 SCALE 1" = 40' 1" = 8' DESIGN H.L.E. DRAWN	REVISION DESCRIPTION		



2-88