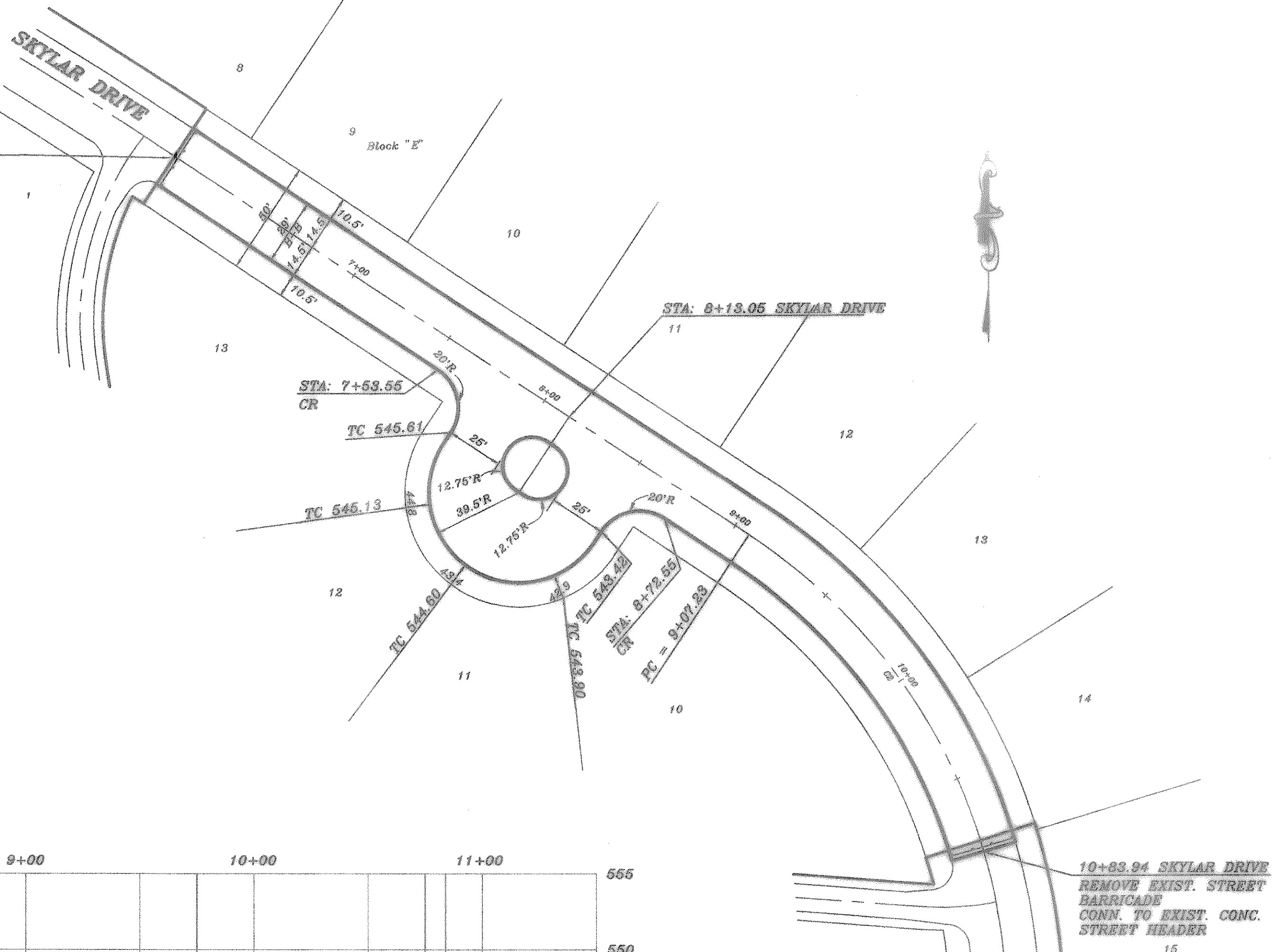
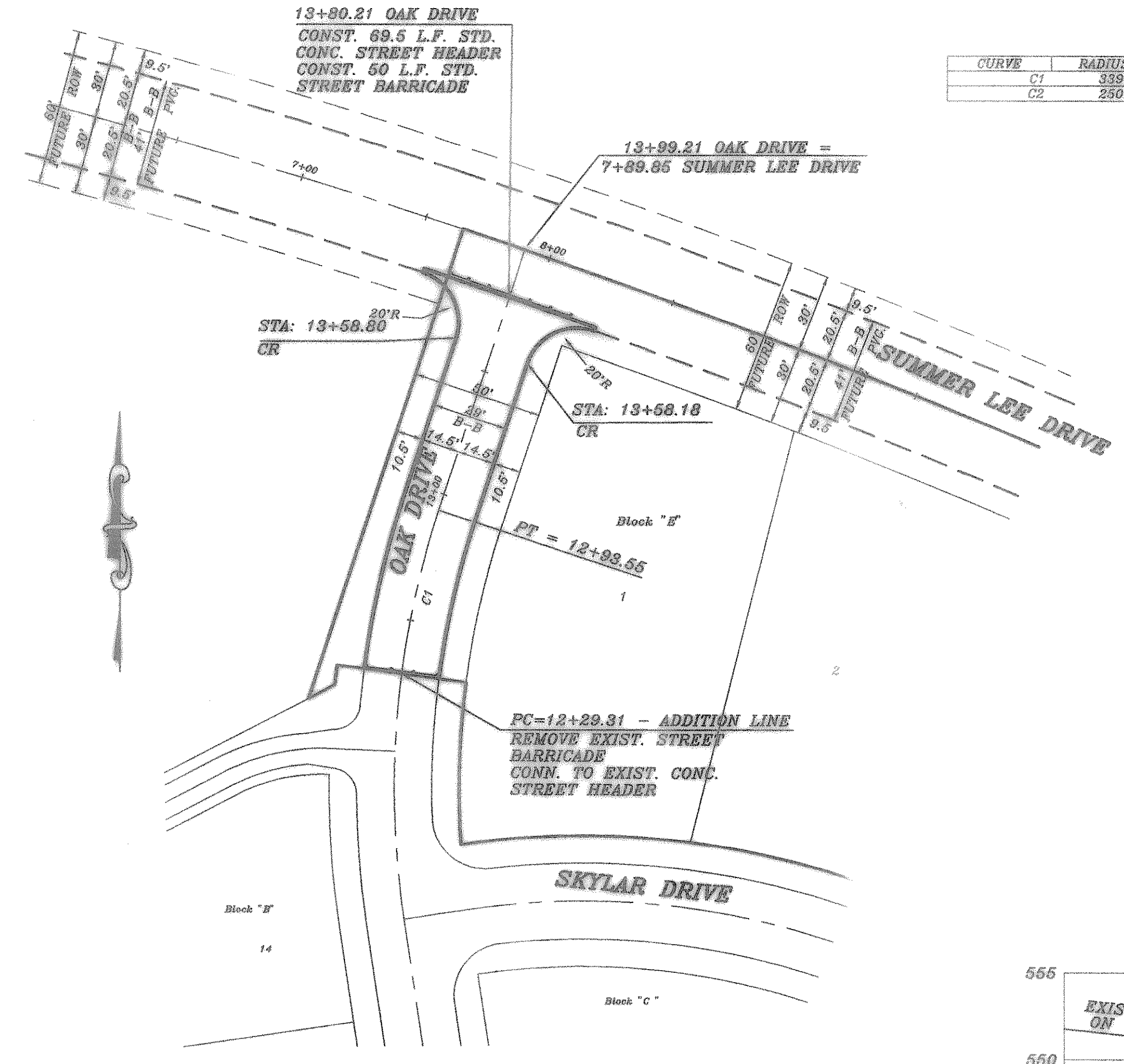
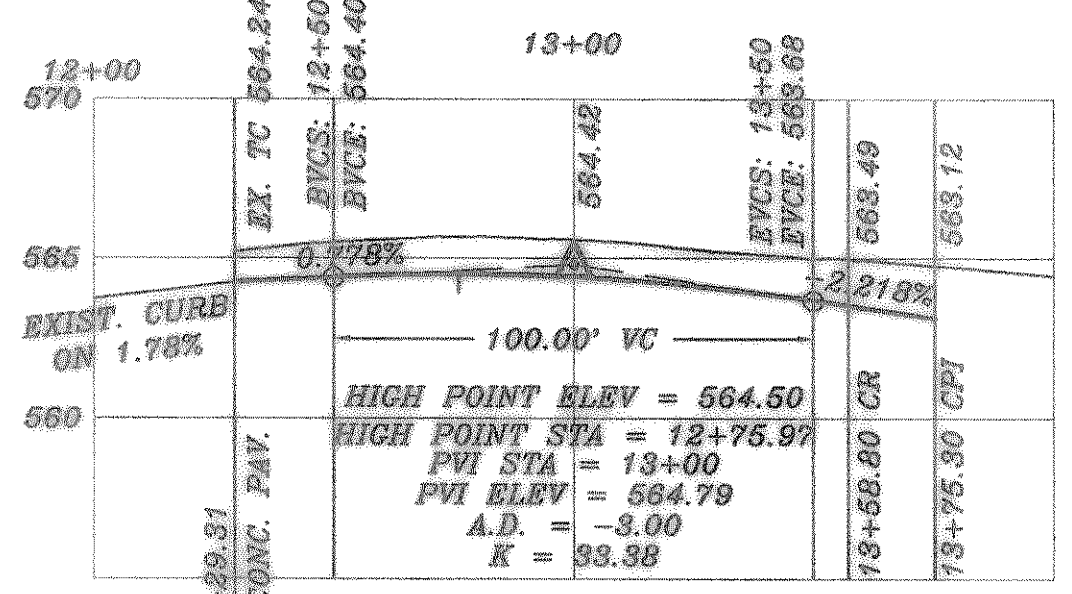


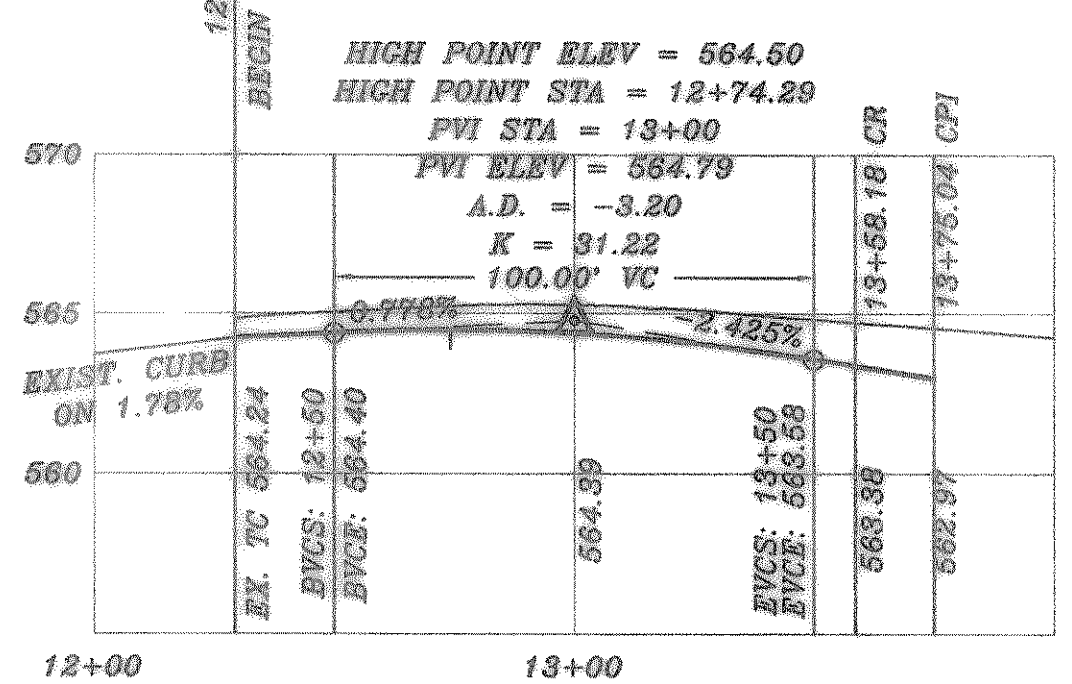
| CURVE | RADIUS | LENGTH | TANGENT | CHORD | BEARING | DELTA |
|-------|---------|---------|---------|---------|--------------|-----------|
| C1 | 339.40' | 64.24' | 32.21' | 64.14' | S12°52'31" W | 10°50'38" |
| C2 | 250.00' | 176.71' | 92.23' | 173.06' | N36°31'08" W | 40°29'57" |



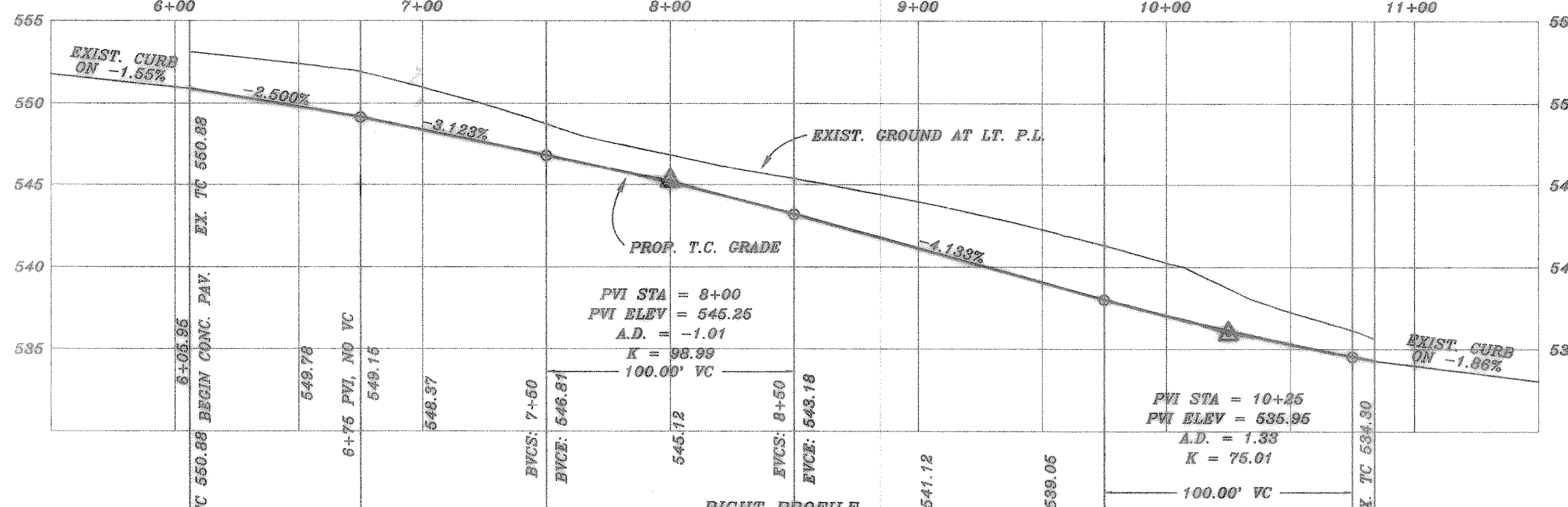
OAK DRIVE LEFT PROFILE



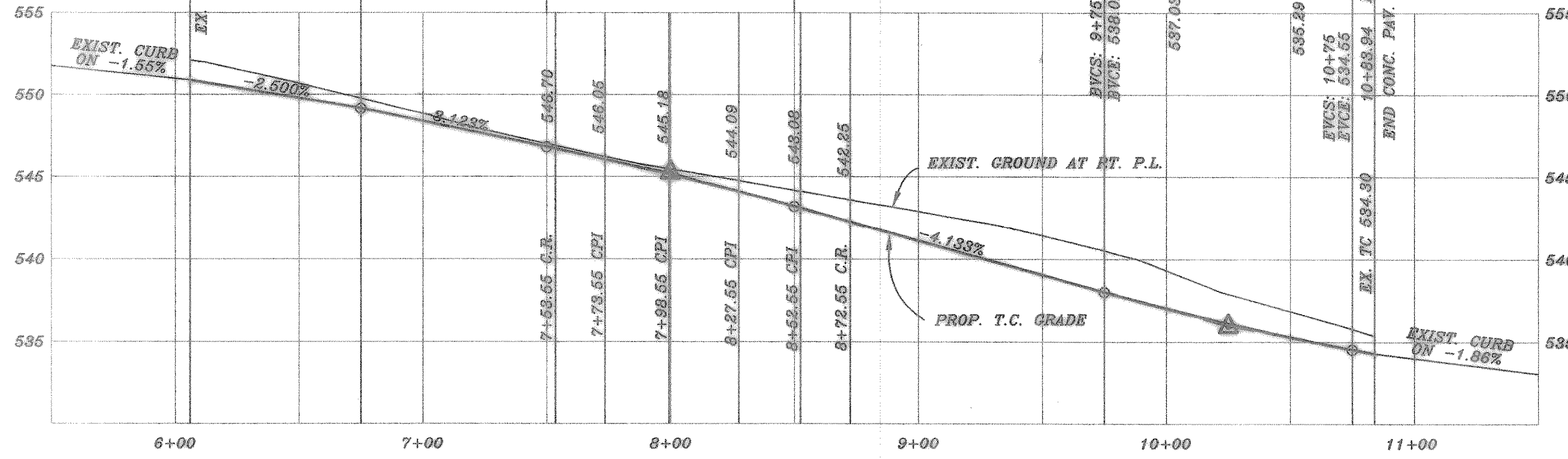
OAK DRIVE RIGHT PROFILE



SKYLAR DRIVE LEFT PROFILE

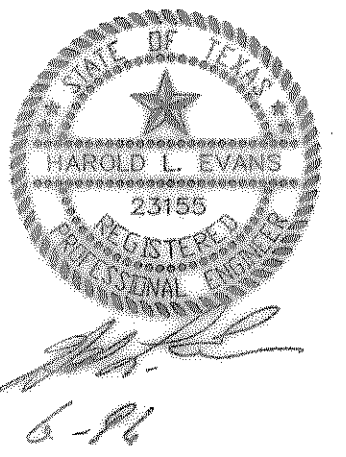


SKYLAR DRIVE RIGHT PROFILE



B.M. CITY OF ROCKWALL BRASS DISK ON N.E. CORNER OF 20" INLET ON WEST SIDE STEEPLE CHASE LANE, 1.040' +/- SOUTH OF THE INTERSECTION OF STEEPLE CHASE LANE AND OAK DRIVE. ELEV.: 540.50

B.M. CITY OF ROCKWALL BRASS DISK ON N.W. CORNER OF 20" INLET ON WEST SIDE SKYLAR DRIVE, 75' +/- NORTH OF THE INTERSECTION OF SKYLAR DRIVE AND HUNTERS CLEN. ELEV.: 532.63



| REVISION | DESCRIPTION | DATE |
|--------------------------|-------------|----------|
| REV. PER 4th CITY REVIEW | | 6/24/98 |
| REV. PER 2nd CITY REVIEW | | 4/29/98 |
| REV. PER CITY REVIEW | | 12/24/97 |

HAROLD L. EVANS
CONSULTING ENGINEER
P.O. BOX 28556
2931 GUS THOMAS ROAD, SUITE 102
DALLAS, TEXAS 75228, (214) 328-8133

PROPOSED PAVING
OAK DRIVE (NORTH) & SKYLAR DRIVE
FOXCHASE PHASE 5
CITY OF ROCKWALL

| | |
|-----------|------|
| SHEET NO. | 4 |
| | 17 |
| JOB NO. | 9781 |