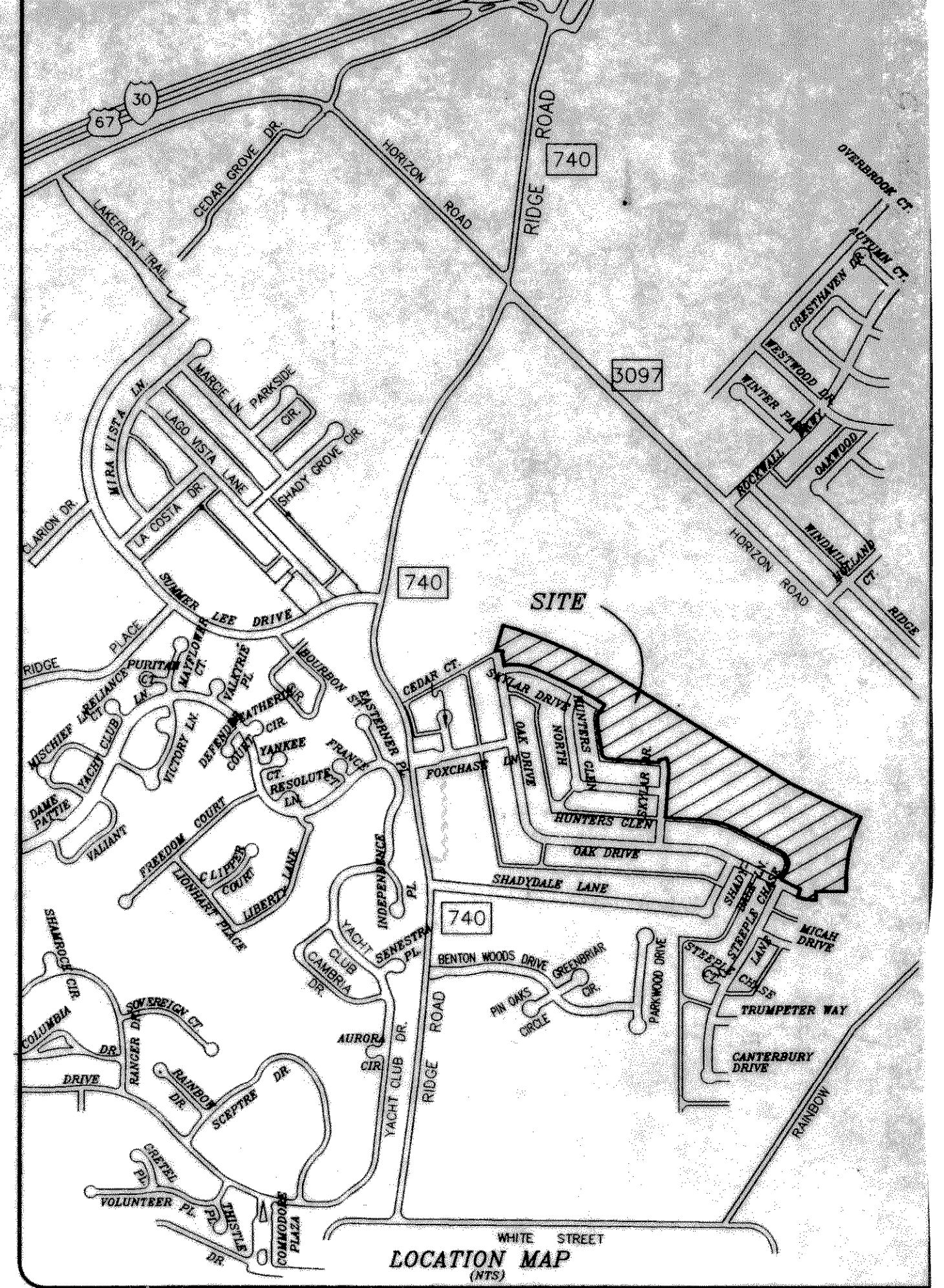
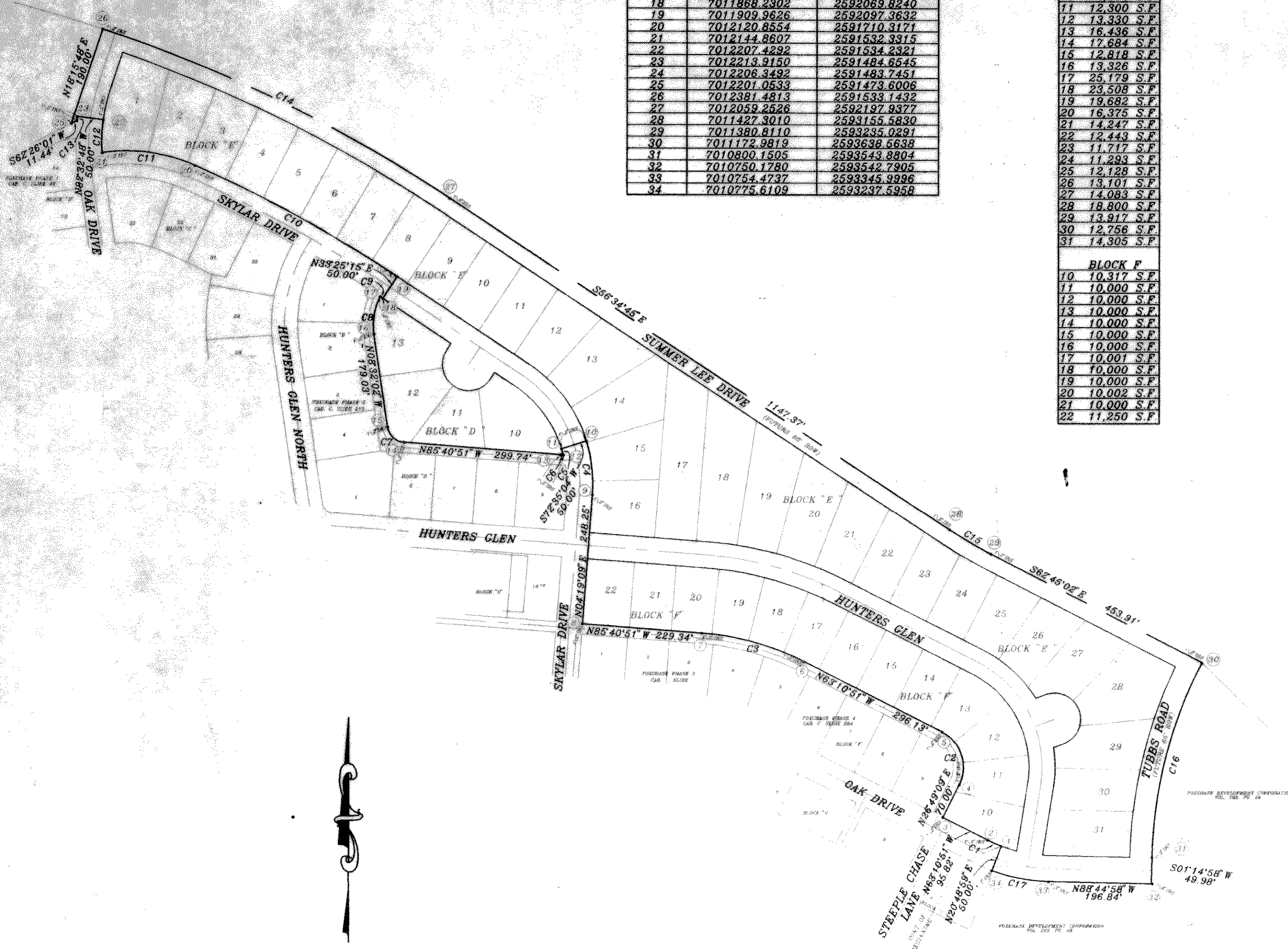


SURFACE ADJUSTED COORDINATES		
NO.	NORTHING	EASTING
1	7010822.3471	2593255.3645
2	7010833.9767	2593229.0187
3	7010877.2105	2593143.5016
4	7010939.6809	2593175.0839
5	7011040.4541	2593141.9849
6	7011174.0581	2592877.7138
7	7011228.5151	2592882.2643
8	7011245.7875	2592453.5711
9	7011493.3295	2592472.2670
10	7011596.3471	2592460.4419
11	7011581.3822	2592412.7339
12	7011569.6515	2592416.0672
13	7011569.9273	2592410.8252
14	7011592.5014	2592111.9350
15	7011622.2082	2592079.9584
16	7011799.2536	2592053.3916
17	7011871.3908	2592065.0228
18	7011868.2302	2592069.8240
19	7011909.9626	2592097.3632
20	7012120.8554	2591710.3171
21	7012144.8607	2591532.3315
22	7012207.4292	2591534.2321
23	7012213.9150	2591484.6545
24	7012206.3492	2591483.7451
25	7012201.0533	2591473.6006
26	7012381.4813	2591533.1432
27	7012059.2526	2592197.9377
28	7011427.3010	2593155.8830
29	7011380.8110	2593235.0291
30	7011172.9919	2593638.6639
31	7010800.1505	2593543.8804
32	7010750.1780	2593542.7905
33	7010754.4737	2593345.9996
34	7010775.6109	2593237.5958

LOT AREAS	
BLOCK D	
10	15,809 S.F.
11	10,900 S.F.
12	12,631 S.F.
13	14,036 S.F.
BLOCK E	
1	17,348 S.F.
2	13,532 S.F.
3	12,702 S.F.
4	12,381 S.F.
5	12,381 S.F.
6	12,381 S.F.
7	12,381 S.F.
8	12,313 S.F.
9	12,300 S.F.
10	12,300 S.F.
11	12,300 S.F.
12	13,330 S.F.
13	16,436 S.F.
14	17,684 S.F.
15	12,818 S.F.
16	13,326 S.F.
17	25,179 S.F.
18	23,508 S.F.
19	19,682 S.F.
20	16,375 S.F.
21	14,247 S.F.
22	12,443 S.F.
23	11,717 S.F.
24	11,293 S.F.
25	12,128 S.F.
26	13,101 S.F.
27	14,083 S.F.
28	18,800 S.F.
29	13,917 S.F.
30	12,756 S.F.
31	14,305 S.F.
BLOCK F	
10	10,317 S.F.
11	10,000 S.F.
12	10,000 S.F.
13	10,000 S.F.
14	10,000 S.F.
15	10,000 S.F.
16	10,000 S.F.
17	10,001 S.F.
18	10,000 S.F.
19	10,000 S.F.
20	10,002 S.F.
21	10,000 S.F.
22	11,250 S.F.



CURVE	RADIUS	LENGTH	TANGENT	CHORD	BEARING	DELTA
C1	275.00'	28.81'	14.42'	28.80'	N66°10'56" W	06°00'10"
C2	75.00'	117.81'	75.01'	106.07'	N18°10'58" W	90°00'14"
C3	520.00'	204.20'	103.43'	202.89'	N74°25'51" W	22°30'00"
C4	275.00'	104.32'	52.79'	103.69'	N06°32'53" W	21°44'04"
C5	225.00'	12.20'	6.10'	12.20'	S15°51'45" E	03°06'21"
C6	115.00'	5.25'	2.63'	5.25'	N86°59'19" W	02°36'56"
C7	35.00'	47.13'	27.91'	43.65'	N47°06'27" W	77°08'49"
C8	120.21'	74.24'	38.35'	73.07'	N09°09'34" E	35°23'11"
C9	2564.27'	5.75'	2.87'	5.75'	S56°38'36" E	00°07'42"
C10	2614.27'	441.30'	221.17'	440.77'	N61°24'54" W	09°40'18"
C11	325.00'	181.96'	93.44'	179.60'	N82°19'08" W	32°04'46"
C12	314.40'	62.70'	31.45'	62.60'	N01°44'24" E	11°25'36"
C13	364.40'	7.62'	3.81'	7.62'	S06°51'15" W	01°11'54"
C14	2794.27'	740.94'	372.66'	738.77'	S64°08'25" E	15°11'34"
C15	855.00'	92.09'	46.09'	92.05'	S59°39'53" E	06°10'17"
C16	855.00'	387.99'	197.39'	384.67'	S14°14'58" W	26°00'00"
C17	325.00'	110.98'	56.04'	110.45'	N78°58'00" W	19°33'57"

48 LOTS  
19.28 ACRES

HAROLD L. EVANS  
CONSULTING ENGINEER  
P.O. BOX 28355  
2331 GUS THOMASSON ROAD, SUITE 102  
DALLAS, TEXAS 75228, (214) 328-8133

**FOXCHASE PHASE 3**  
E. TEAL SURVEY, ABSTRACT NO. 207  
CITY OF ROCKWALL, ROCKWALL COUNTY, TEXAS

SCALE	DATE	JOB No.
1" = 200'	6/24/98	9781

FOXCHASE DEVELOPMENT CORPORATION  
P.O. BOX 369, ROCKWALL, TEXAS 75087 (972) 771-5253