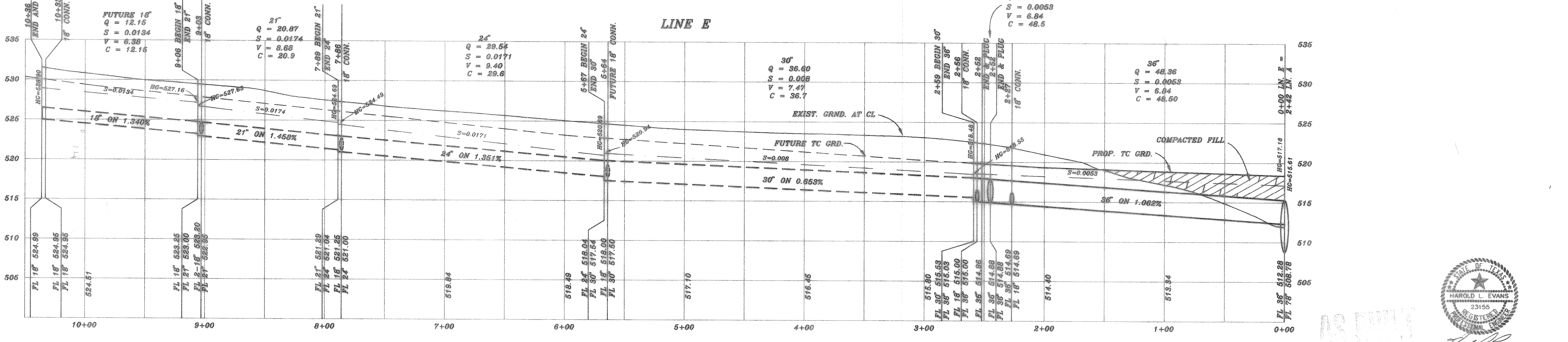
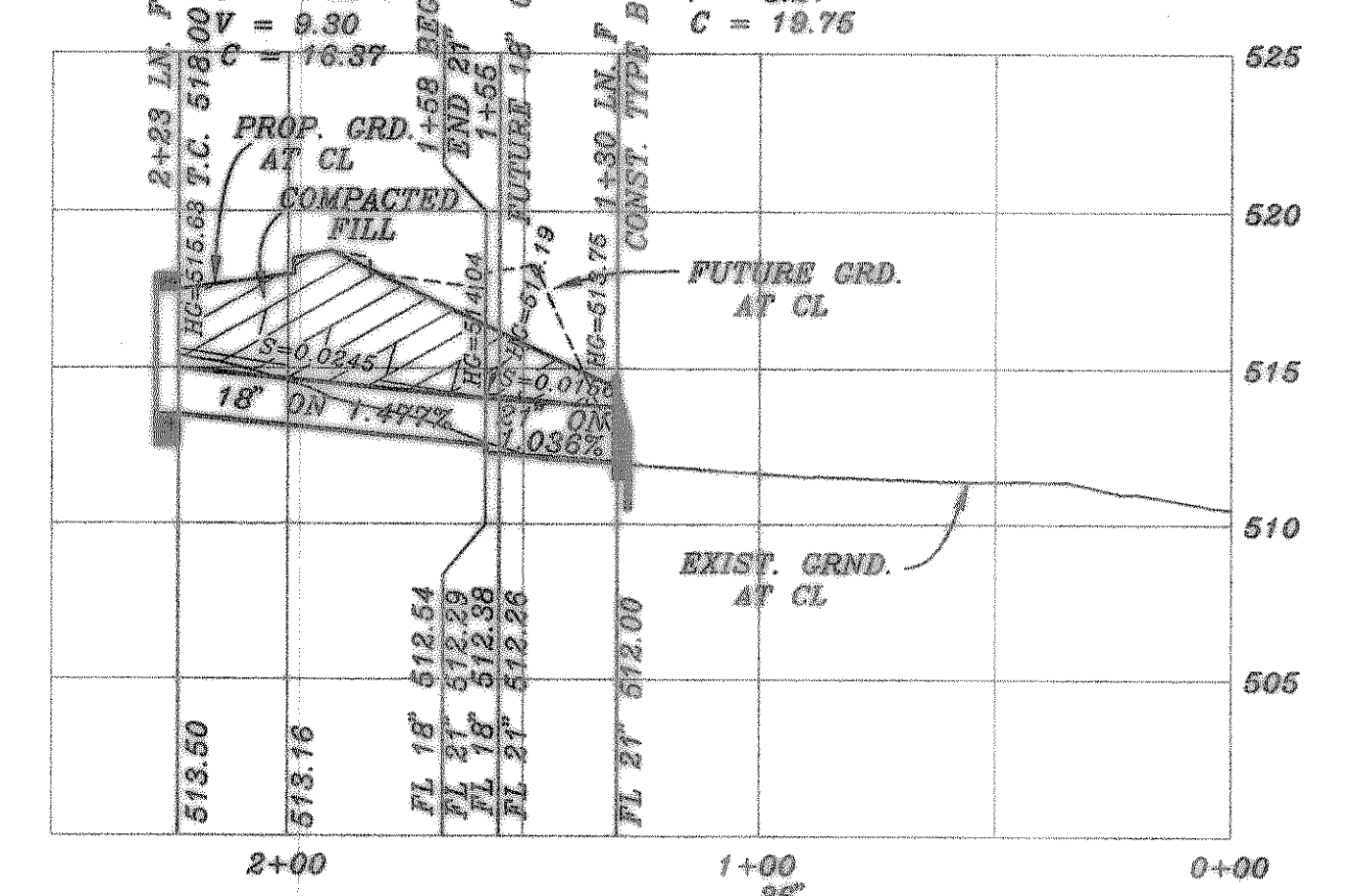
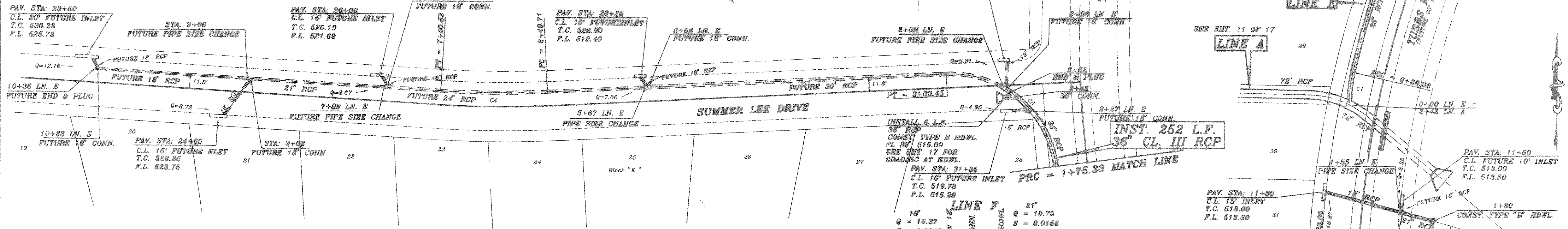


CURVE	RADIUS	LENGTH	TANGENT	CHORD	BEARING	DELTA
C1	100.00'	28.02'	14.10'	27.93'	S85°02'09" W	15°03'12"
C2	881.80'	147.31'	73.88'	147.14'	S17°50'55" W	09°34'12"
C3	30.00'	134.12'	83.03'	122.05'	N20°03'30" W	85°23'04"
C4	843.20'	90.82'	45.46'	90.78'	S89°39'59" E	06°10'17"
C5	100.00'	21.72'	10.88'	21.74'	N66°34'11" W	12°28'47"



B.M. CITY OF ROCKWALL BRASS DISK ON N.E. CORNER OF 20' INLET ON WEST SIDE STEEPLE CHASE LANE, 1.040 +/- SOUTH OF THE INTERSECTION OF STEEPLE CHASE LANE AND OAK DRIVE. ELEV.: 540.50

B.M. CITY OF ROCKWALL BRASS DISK ON N.W. CORNER OF 20' INLET ON WEST SIDE SKYLAR DRIVE, 75' +/- NORTH OF THE INTERSECTION OF SKYLAR DRIVE AND HUNTERS GLEN. ELEV.: 532.63

HAROLD L. EVANS CONSULTING ENGINEER 2331 GUS THOMASSON ROAD, SUITE 102 DALLAS, TEXAS 75228, (214) 328-8133		PROPOSED STORM SEWER LINE E AND F FOXCHASE PHASE 5 CITY OF ROCKWALL	SHEET NO.		
REVISION DESCRIPTION REVISION PER 4th CITY REVIEW REVISION PER 2nd CITY REVIEW CREATED PER CITY REVIEW	DATE 1/26/98		SCALE 1" = 40' 1" = 8'	DESIGN H.L.E.	DRAWN

