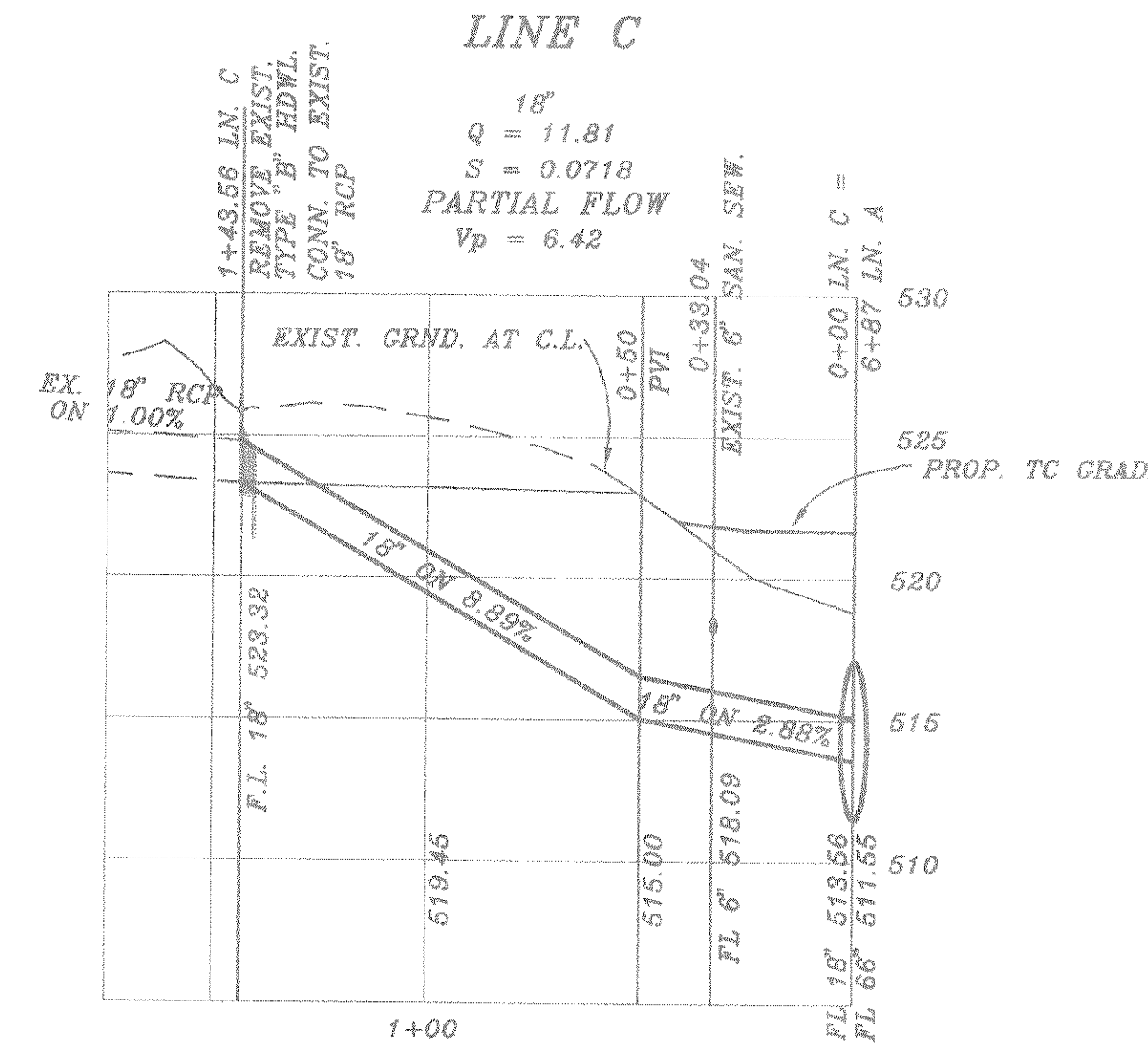
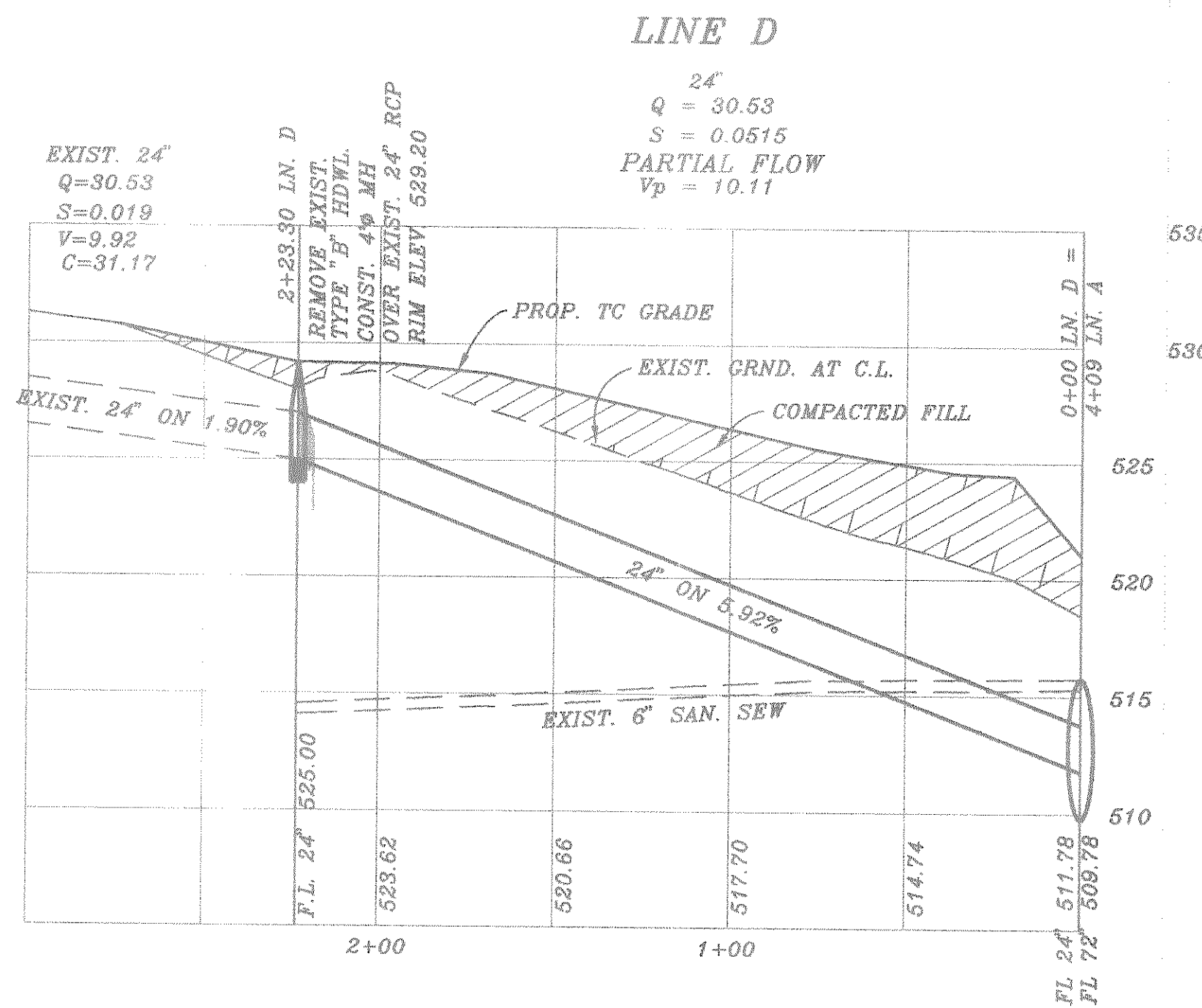
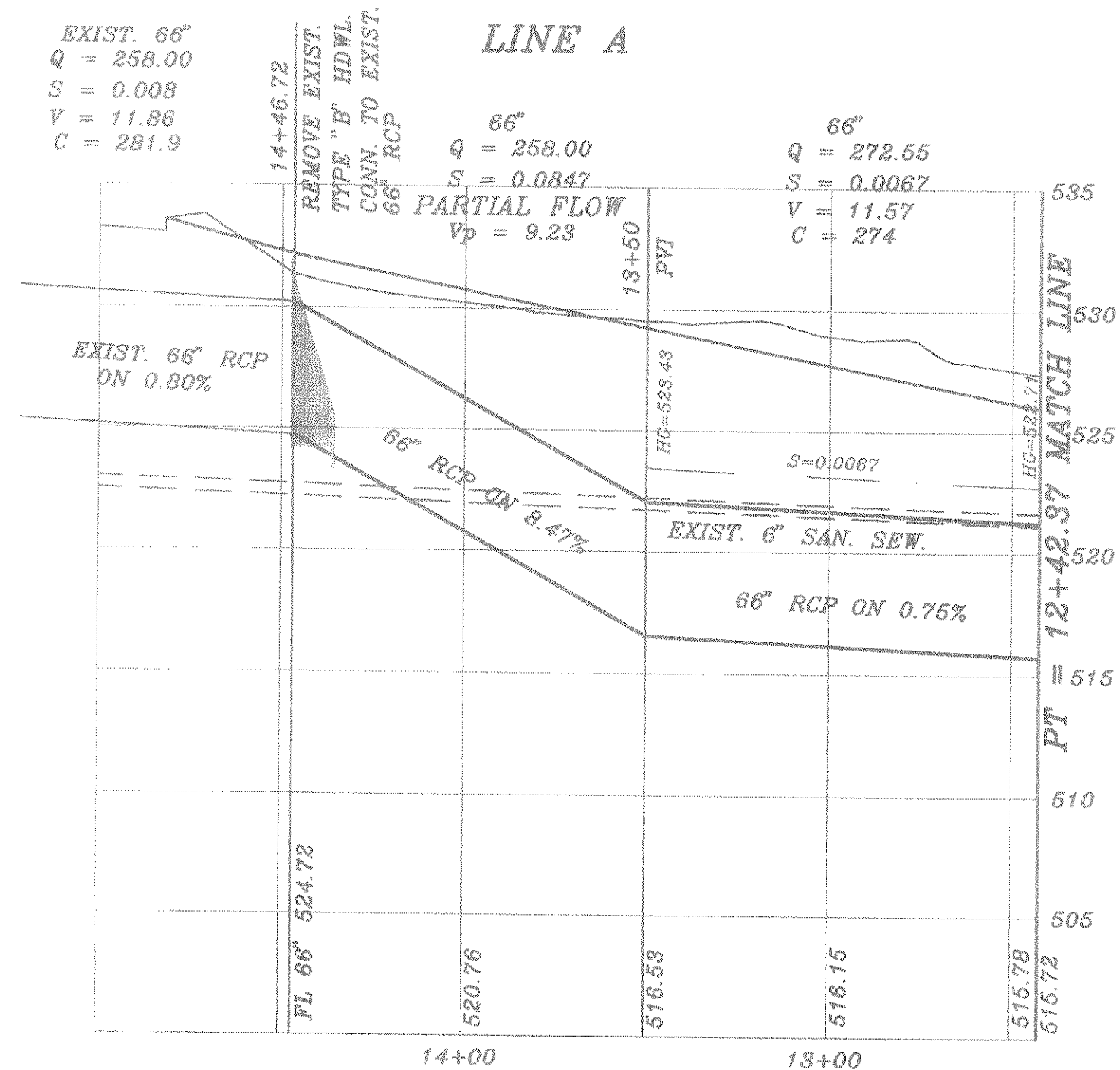
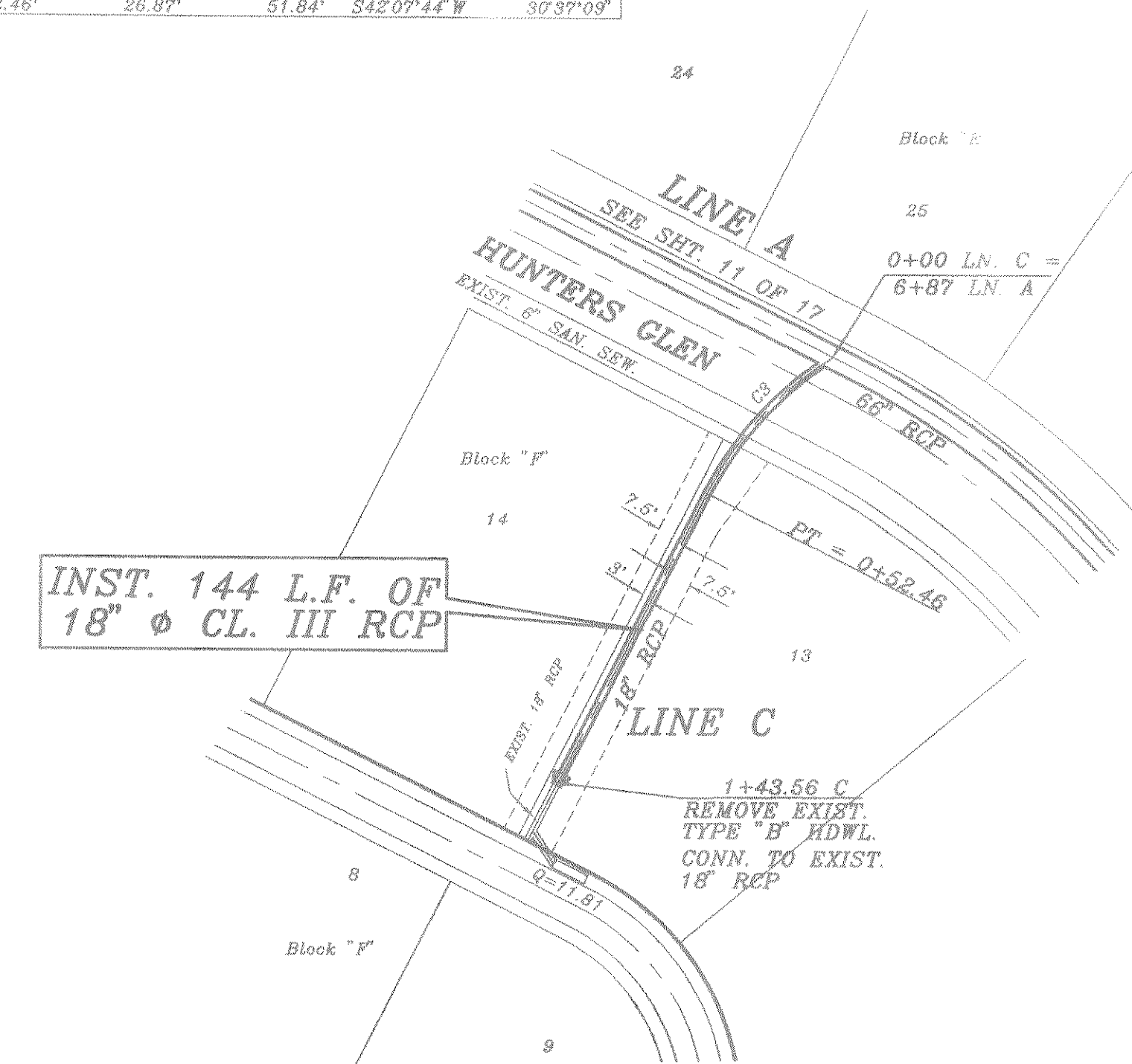
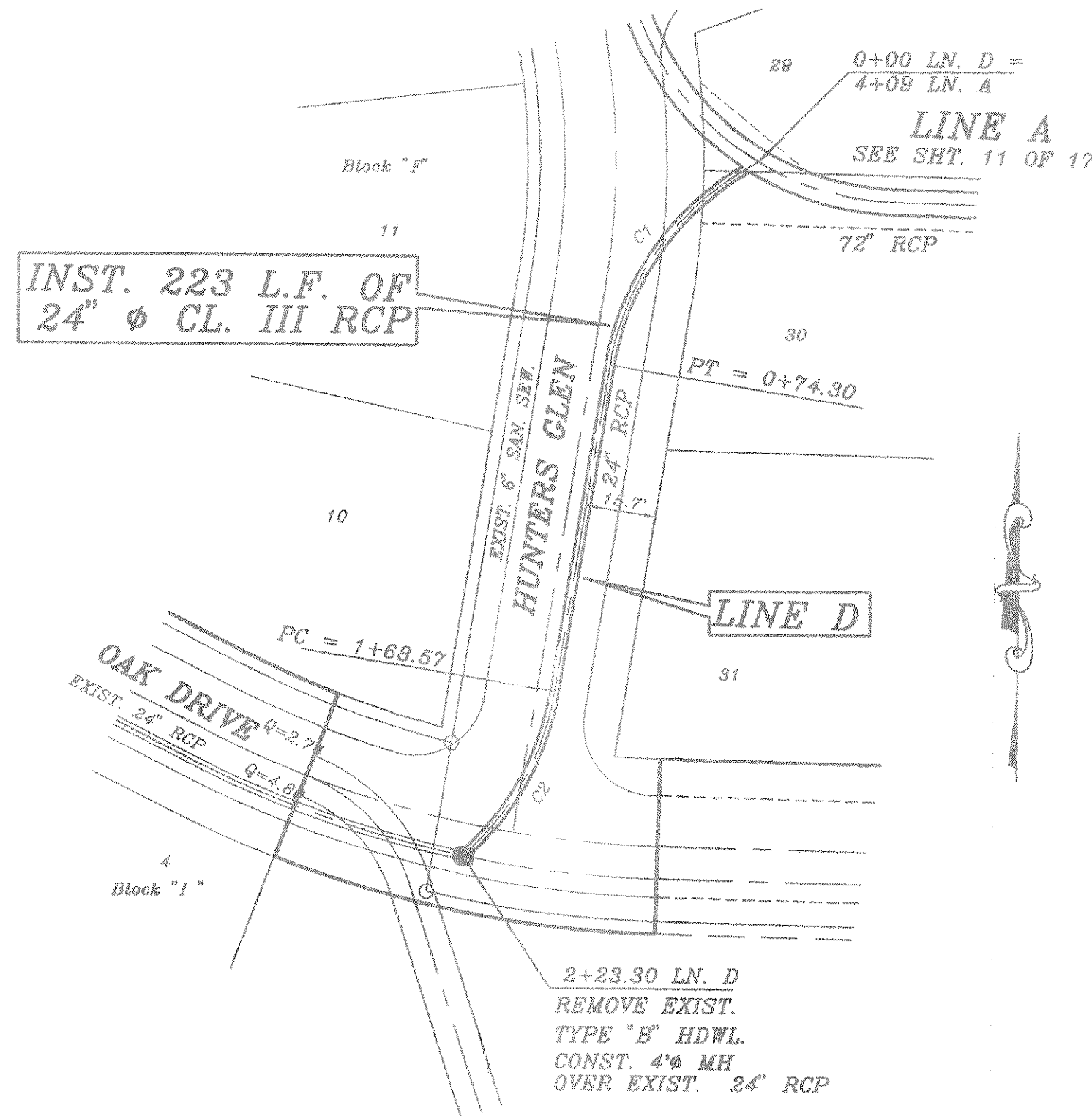
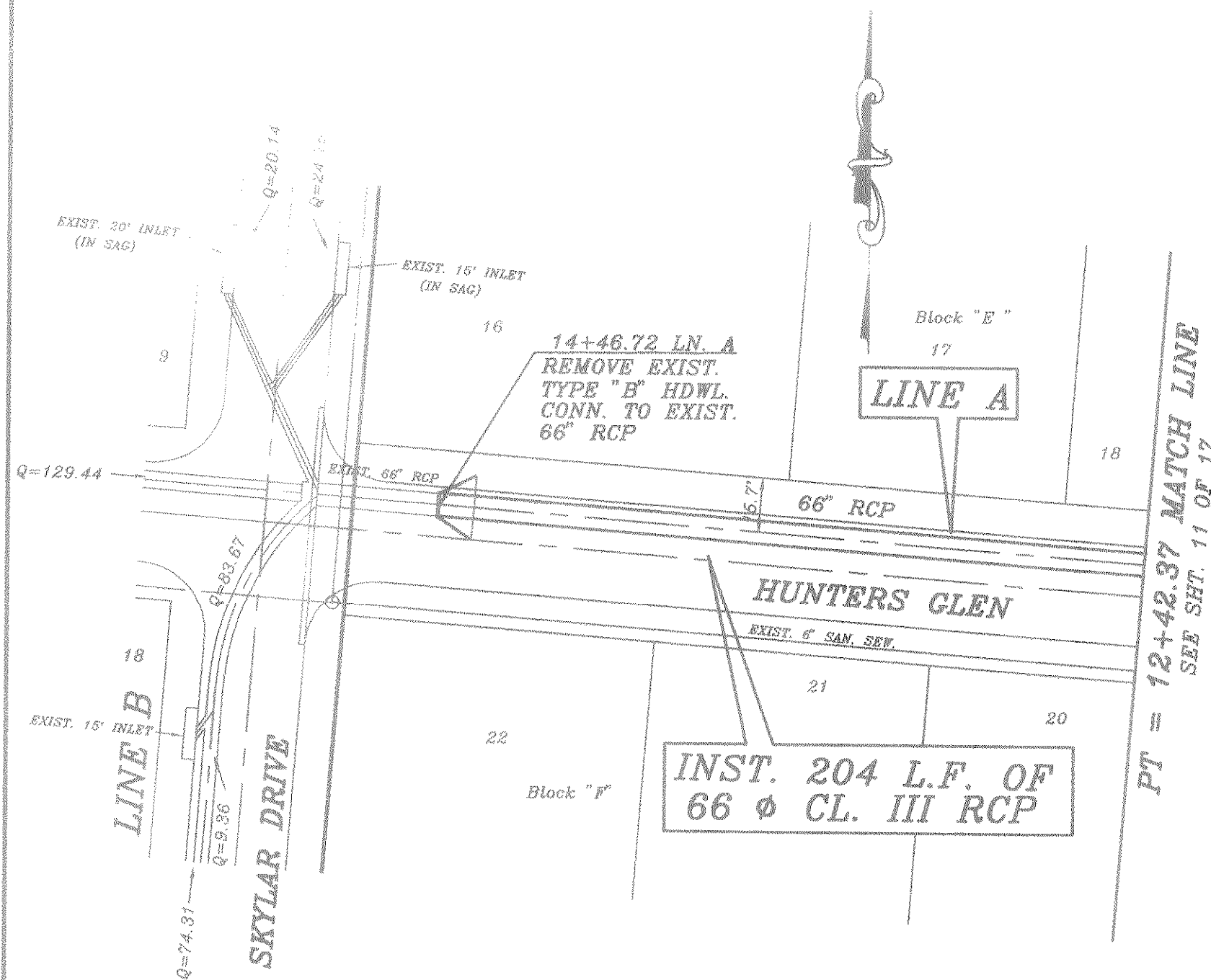


CURVE	RADIUS	LENGTH	TANGENT	CHORD	BRACING	DELTA
C1	30.43'	74.30'	40.03'	71.89'	S36°36'22" W	62°53'21"
C2	30.00'	54.73'	28.48'	53.87'	N28°43'37" E	35°11'52"
C3	98.17'	52.46'	26.87'	51.84'	S42°07'44" W	37°37'09"



B.M.
CITY OF ROCKWALL BRASS DISK ON
N.E. CORNER OF 20' INLET ON WEST
SIDE STEEPLE CHASE LANE, 1,040' +/-
SOUTH OF THE INTERSECTION OF STEEPLE
CHASE LANE AND OAK DRIVE.
ELEV.: 540.50

B.M.
CITY OF ROCKWALL BRASS DISK ON
N.W. CORNER OF 20' INLET ON WEST
SIDE SKYLAR DRIVE, 75' +/- NORTH OF
THE INTERSECTION OF SKYLAR DRIVE
AND HUNTERS GLEN.
ELEV.: 532.63

REVISION DESCRIPTION	DATE	SCALE	DESIGN	DRAWN
REV. PER 4th CITY REVIEW	6/24/98	1" = 40'		
REV. PER 2nd CITY REVIEW	3/24/98	1" = 6"	H.L.E.	
REV. PER CITY REVIEW	1/18/99			

HAROLD L. EVANS
CONSULTING ENGINEER
P.O. BOX 28365
2331 GUS THOMASSON ROAD, SUITE 102
DALLAS, TEXAS 75228, (214) 328-8133

PROPOSED STORM SEWER		SHEET NO.
LINE A, C, AND D		12
FOXCHASE PHASE 5		17
CITY OF ROCKWALL		JOB NO.
		9781

