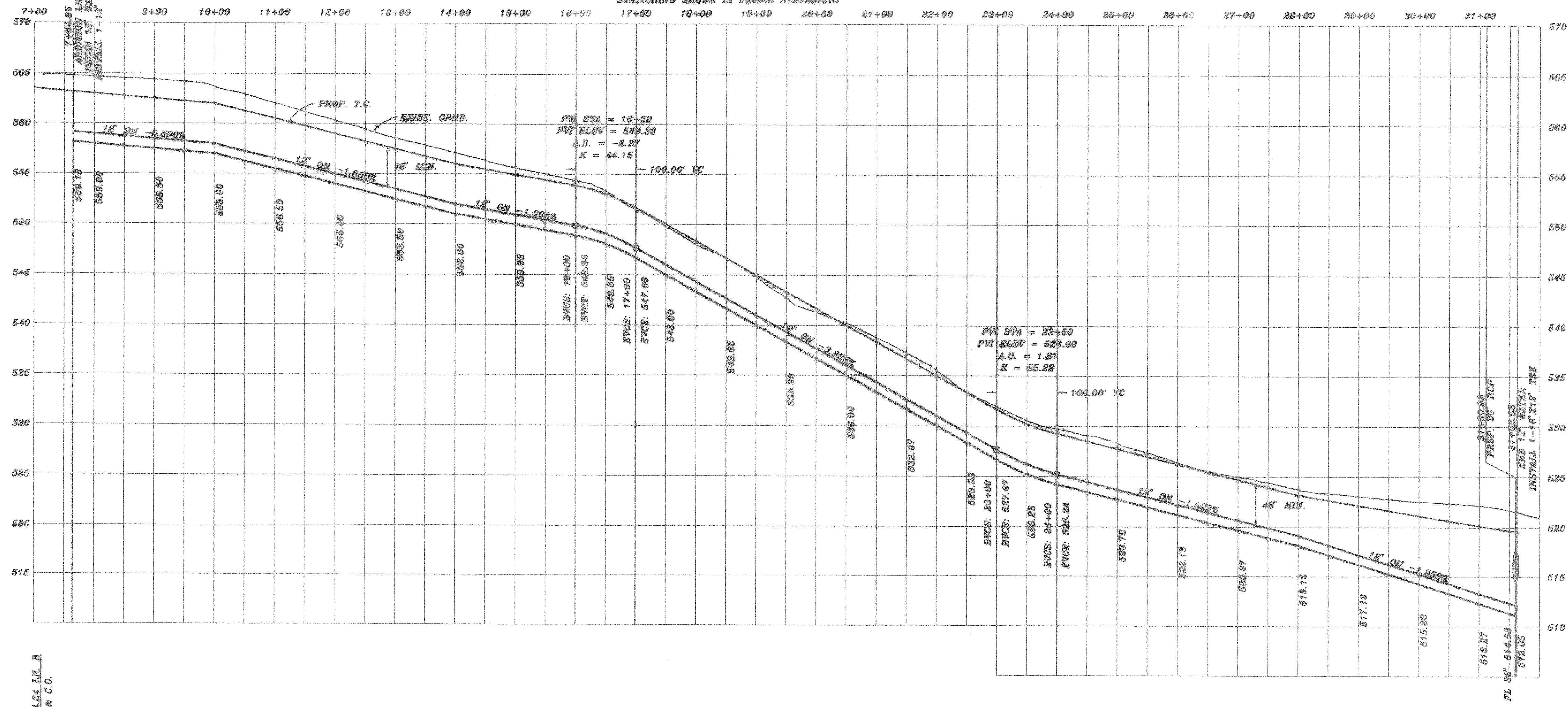
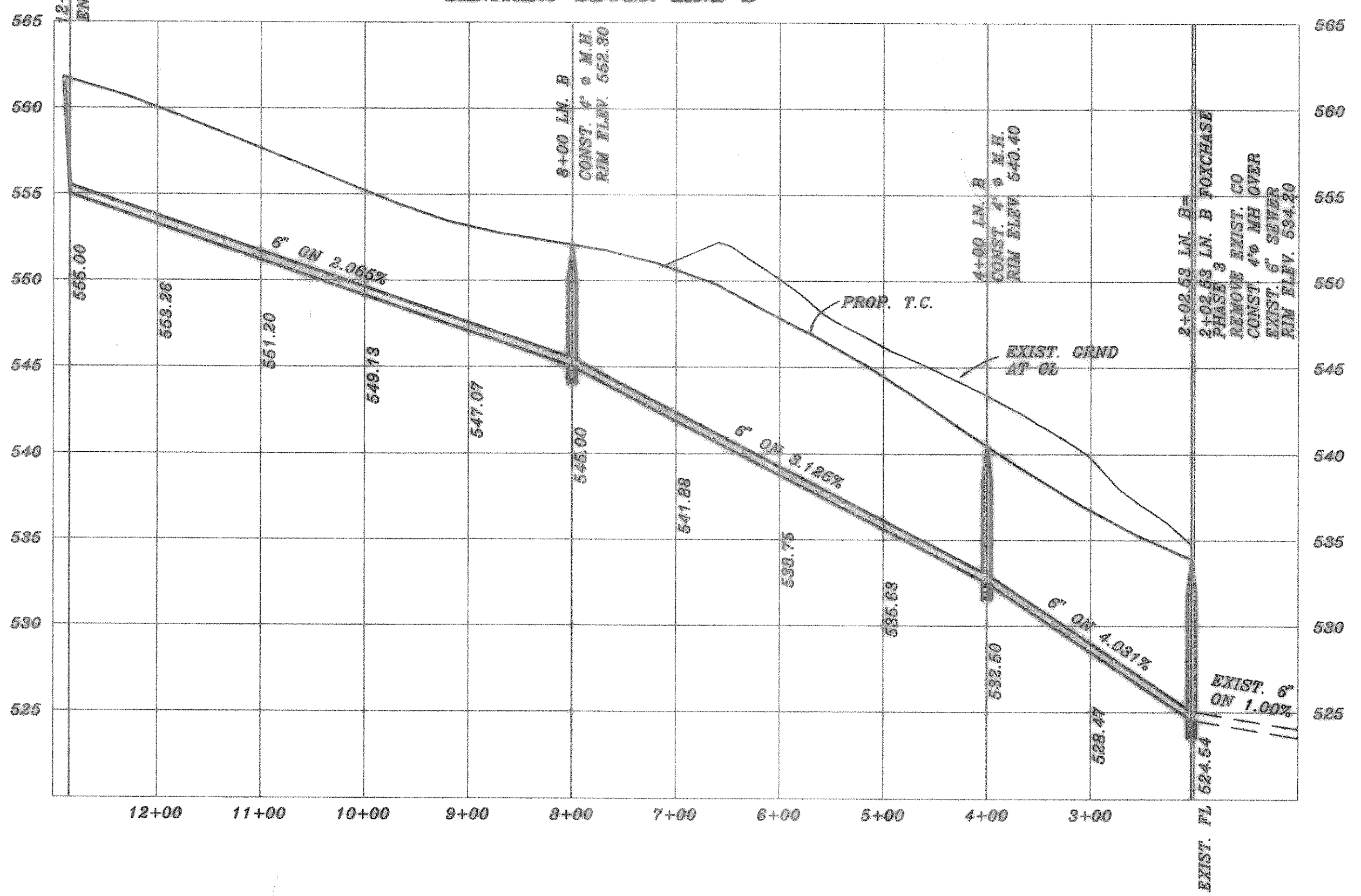


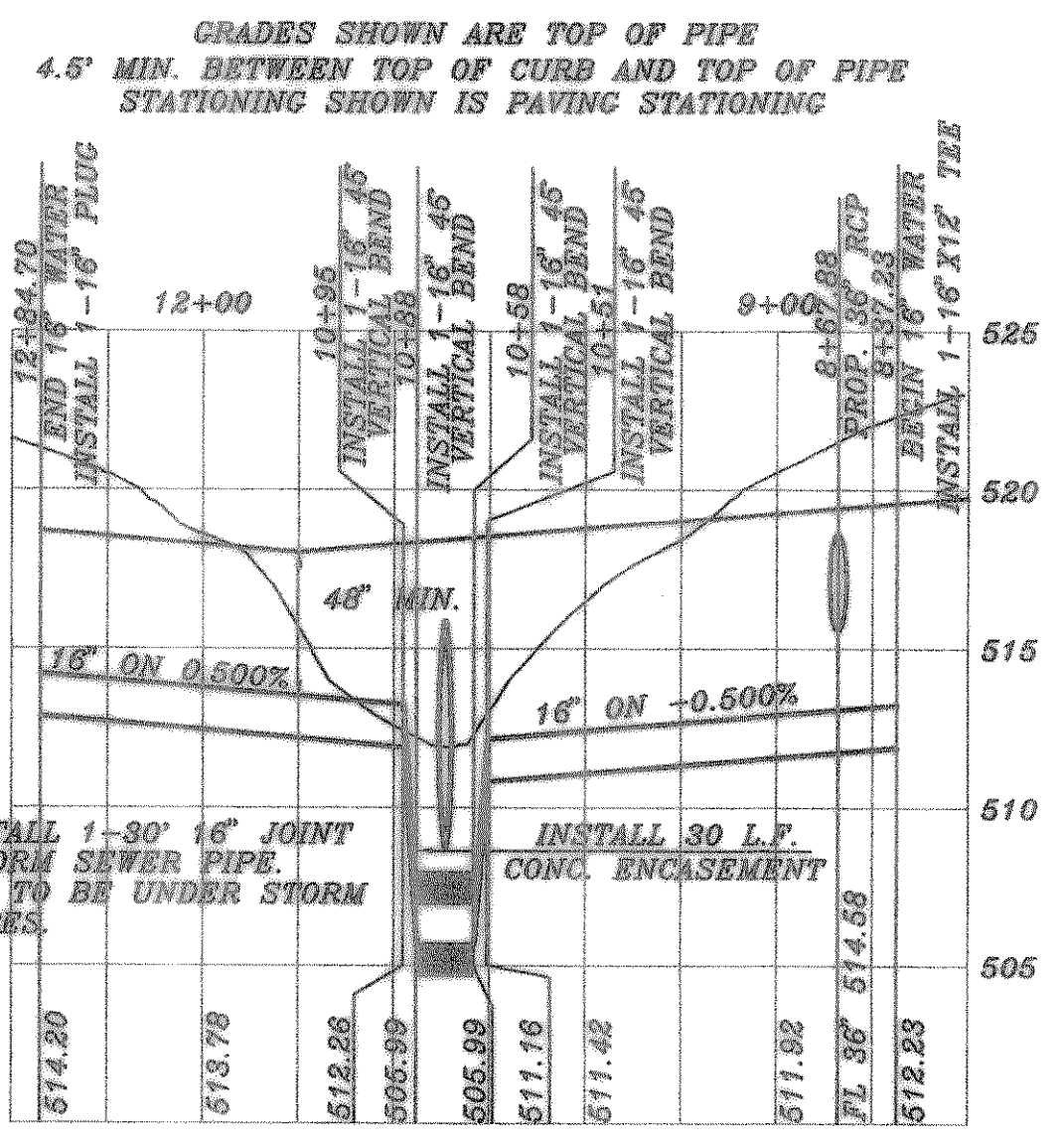
**12" WATER LINE
IN SUMMER LEE DRIVE**
GRADES SHOWN ARE TOP OF PIPE
48" MIN. BETWEEN TOP OF CURB AND TOP OF PIPE
STATIONING SHOWN IS PAVING STATIONING



SANITARY SEWER LINE B



**16" WATER LINE
IN TUBBS ROAD**

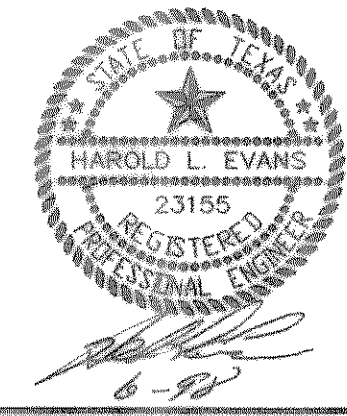


B.M. CITY OF ROCKWALL BRASS DISK ON N.E. CORNER OF 20' INLET ON WEST SIDE STEEPLE CHASE LANE 1.040' +/- SOUTH OF THE INTERSECTION OF STEEPLE CHASE LANE AND OAK DRIVE. ELEV.: 540.50

B.M. CITY OF ROCKWALL BRASS DISK ON N.E. CORNER OF 20' INLET ON WEST SIDE SKYLAR DRIVE 75' +/- NORTH OF THE INTERSECTION OF SKYLAR DRIVE AND HUNTERS GLEN. ELEV.: 532.83

NOTE: INSTALL 1'-90" 16" JOINT UNDER STORM SEWER PIPE. NO JOINTS TO BE UNDER STORM SEWER PIPES.

AS SHOWN



HAROLD L. EVANS CONSULTING ENGINEER 2831 GUS THOMAS ROAD, SUITE 102 DALLAS, TEXAS 75228, (214) 328-8138		PROPOSED UTILITIES PROFILES		SHEET NO. 15
REV. PER 4th. CITY REVIEW REV. PER 2nd. CITY REVIEW CREATED PER CITY REVIEW	6/24/98 3/29/99 1/13/99	FOXCHASE PHASE 5 CITY OF ROCKWALL		JOB NO. 9781
REVISION DESCRIPTION FOXWSS2	DATE 1/18/98	SCALE 1" = 100' 1" = 6'	DESIGN H.L.E.	DRAWN