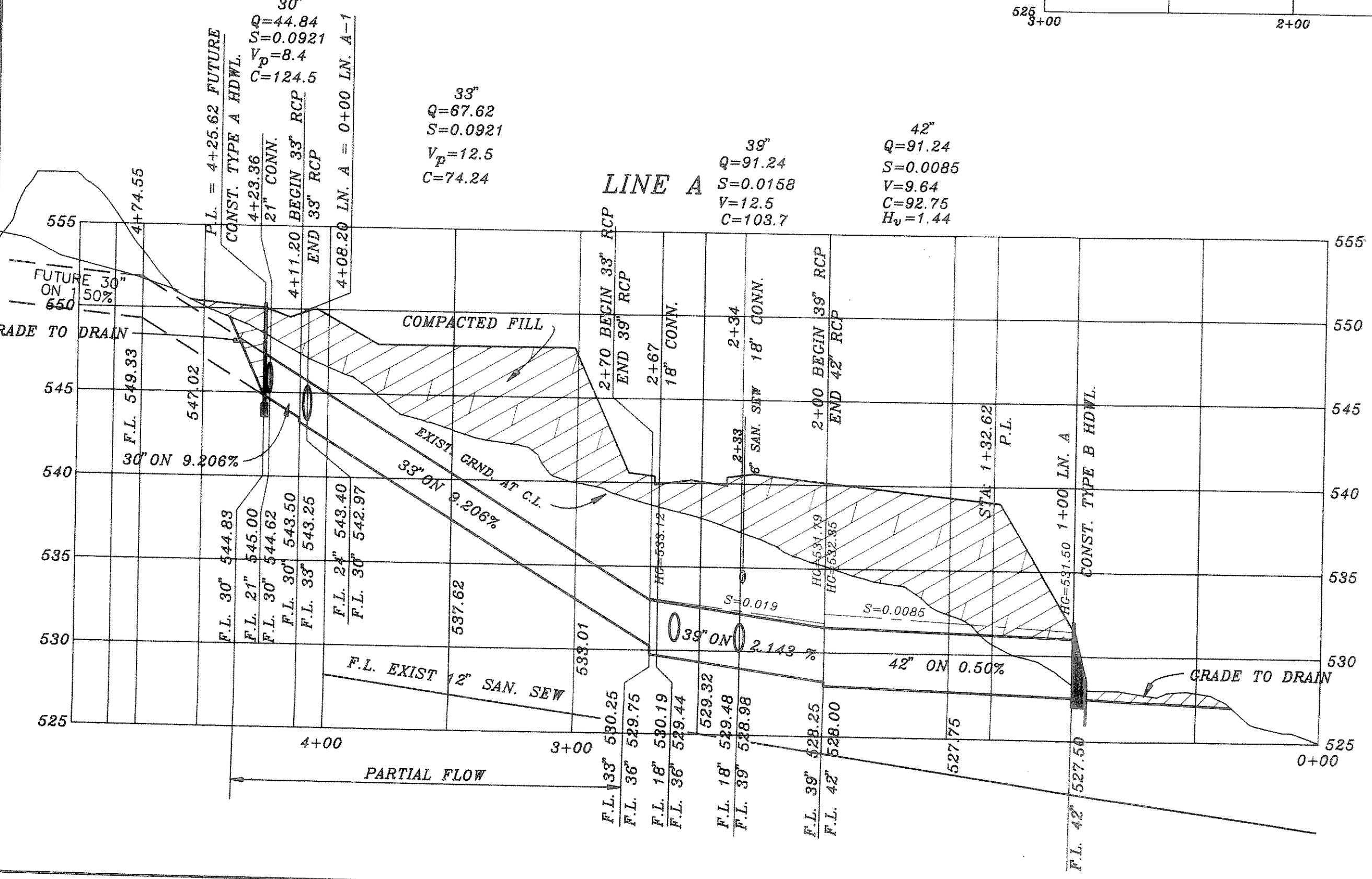
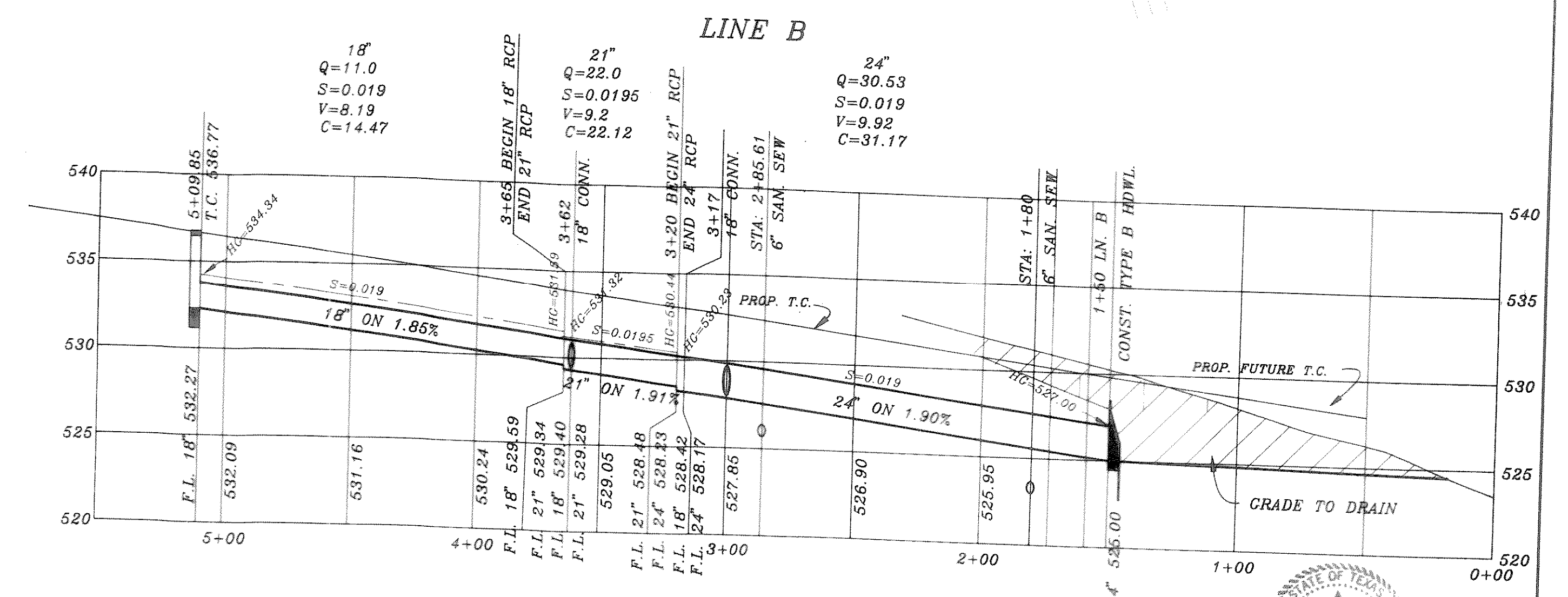
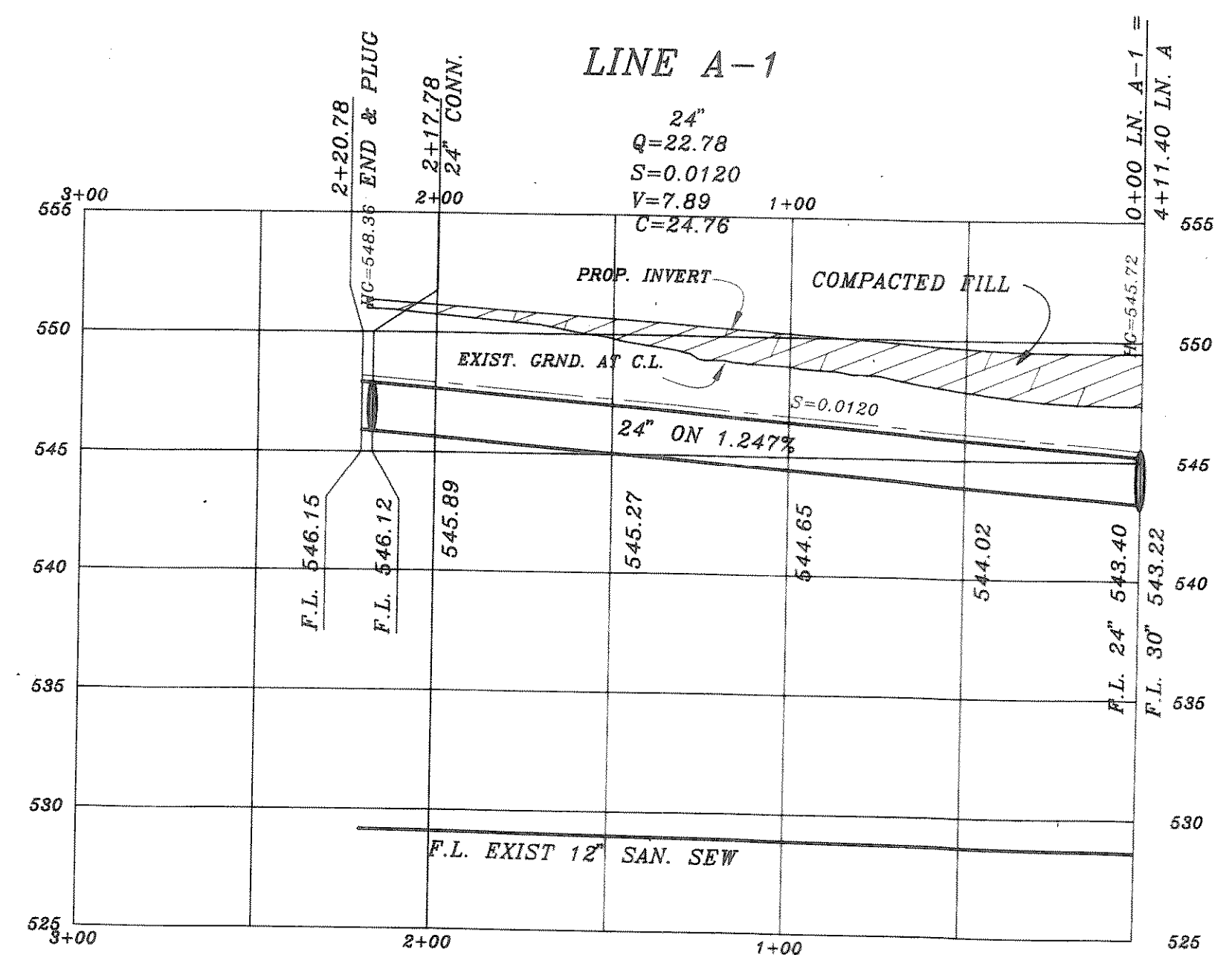
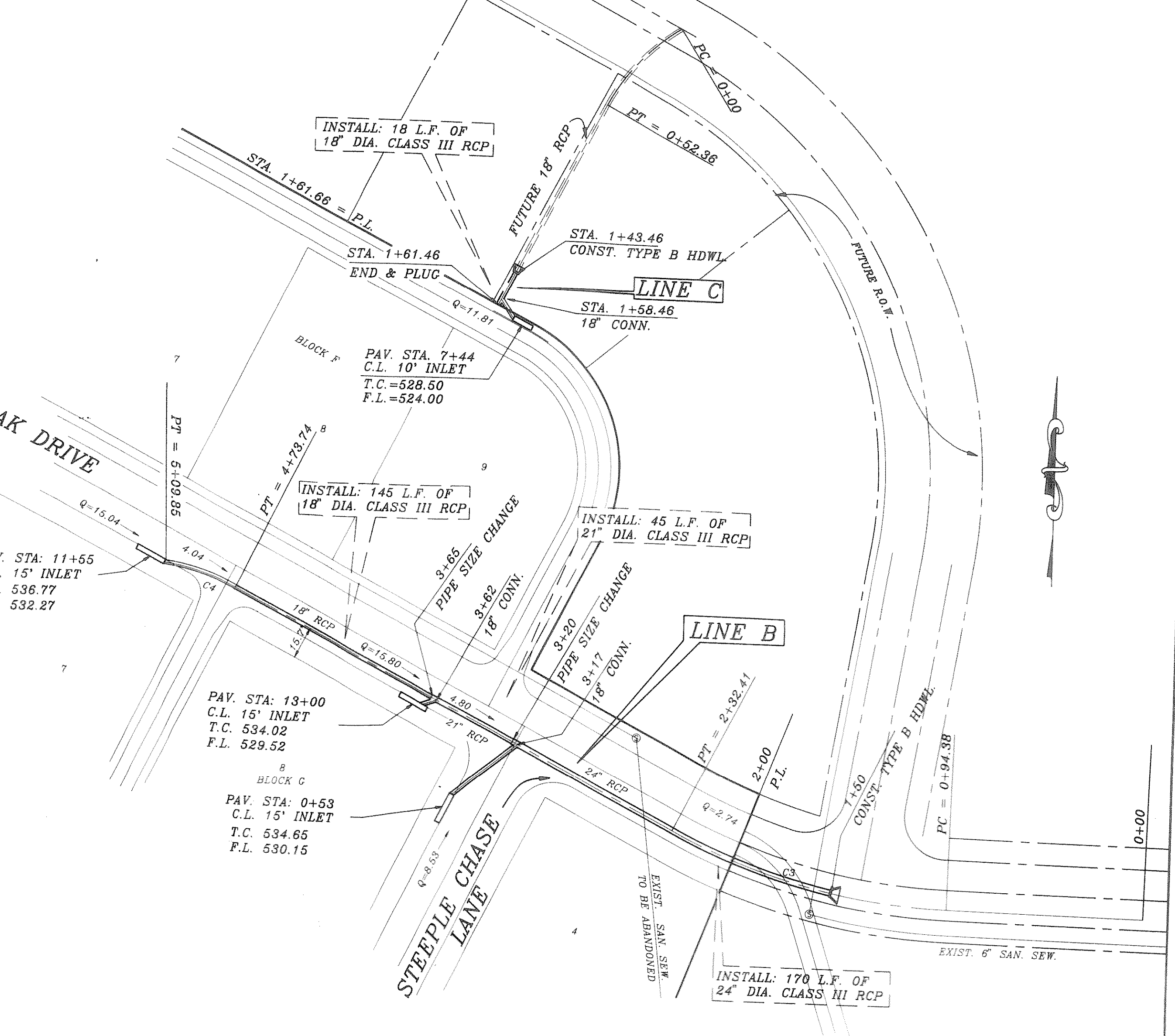
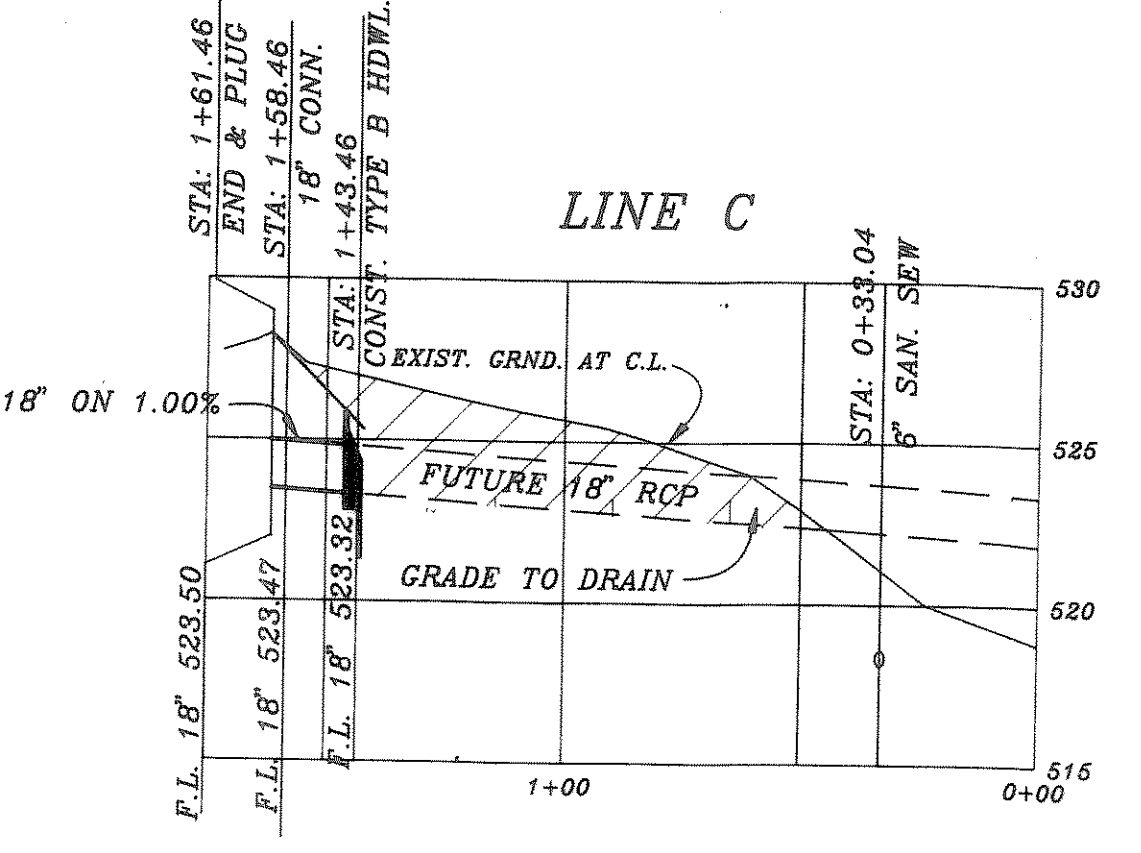
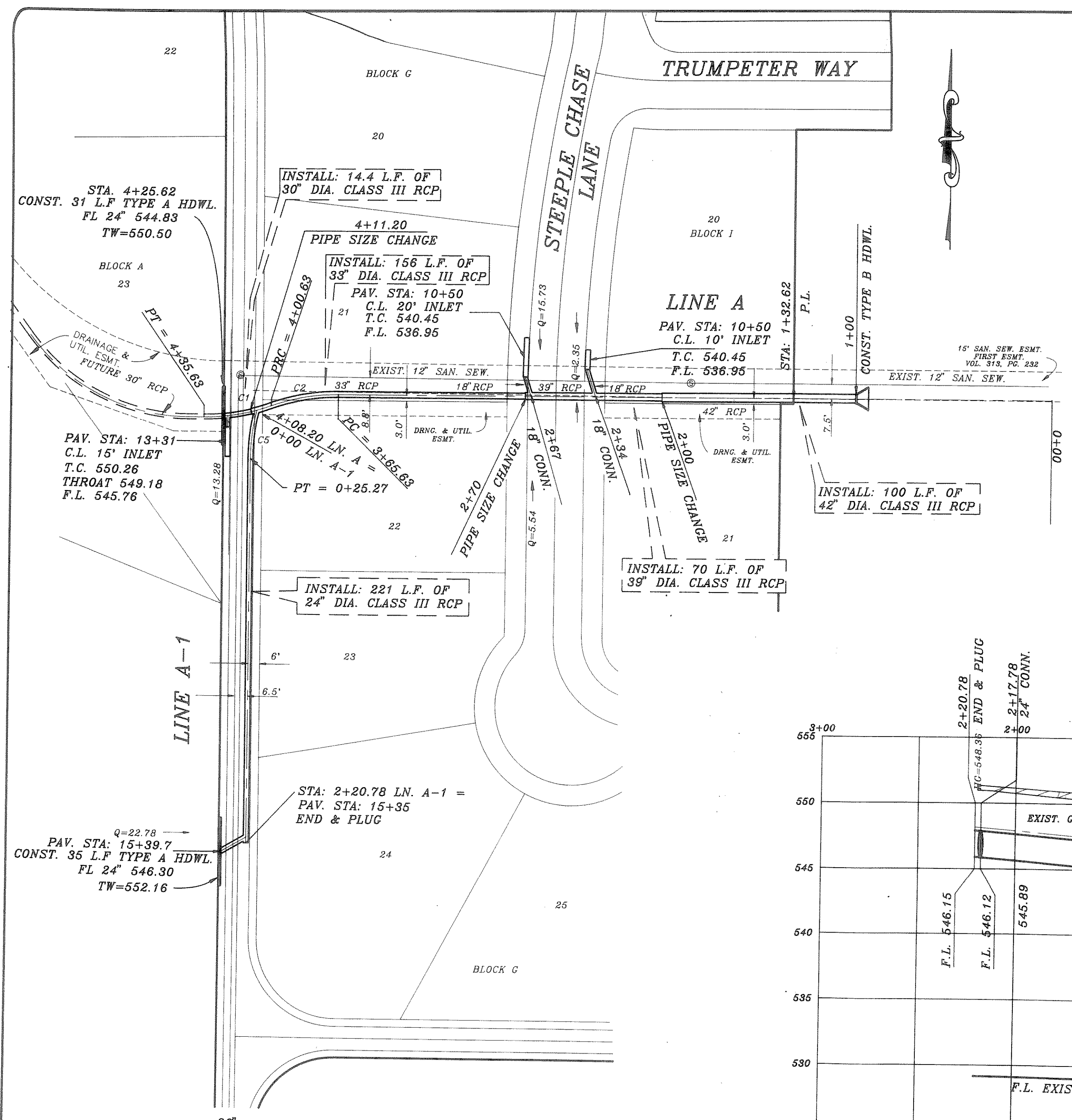


CURVE	RADIUS	LENGTH	TANGENT	CHORD	BEARING	DELTA
C1	100.00'	35.00'	17.68'	34.83'	N79°55'50"E	20°03'21"
C2	100.00'	35.00'	17.68'	34.83'	S79°55'50"W	20°03'20"
C3	309.30'	136.03'	70.18'	136.89'	S75°57'55"E	25°34'07"
C4	100.00'	36.11'	18.26'	35.92'	N73°11'55"W	20°41'27"
C5	100.00'	25.27'	12.70'	25.20'	S06°59'53"W	14°28'45"



B.M.
TOP OF EXIST. M.H. AT STA. 14+03,
21.5' LT. ON OAK DRIVE
ELEVATION = 531.98

B.M.
TOP OF EXIST. M.H. AT STA. 16+05,
40' RT. ON SHADY DALE LANE
ELEVATION = 551.85

HAROLD L. EVANS CONSULTING ENGINEER P.O. BOX 28355 2331 GUS THOMASSON ROAD, SUITE 102 DALLAS, TEXAS 75228, (214) 328-8133		SHEET NO. 10 13 JOB NO. 93121
REV. PER 3RD. CITY REVIEW 4/11/95 REV. PER 2ND. CITY REVIEW 3/15/95 REV. PER CITY REVIEW 2/10/95	DATE 11/13/94	SCALE 1" = 40' 1" = 8'
REVISION DESCRIPTION	DESIGN H.L.E.	DRAWN

PROPOSED STORM SEWER
 LINE A & LINE B
 FOXCHASE PHASE FOUR
 CITY OF ROCKWALL

