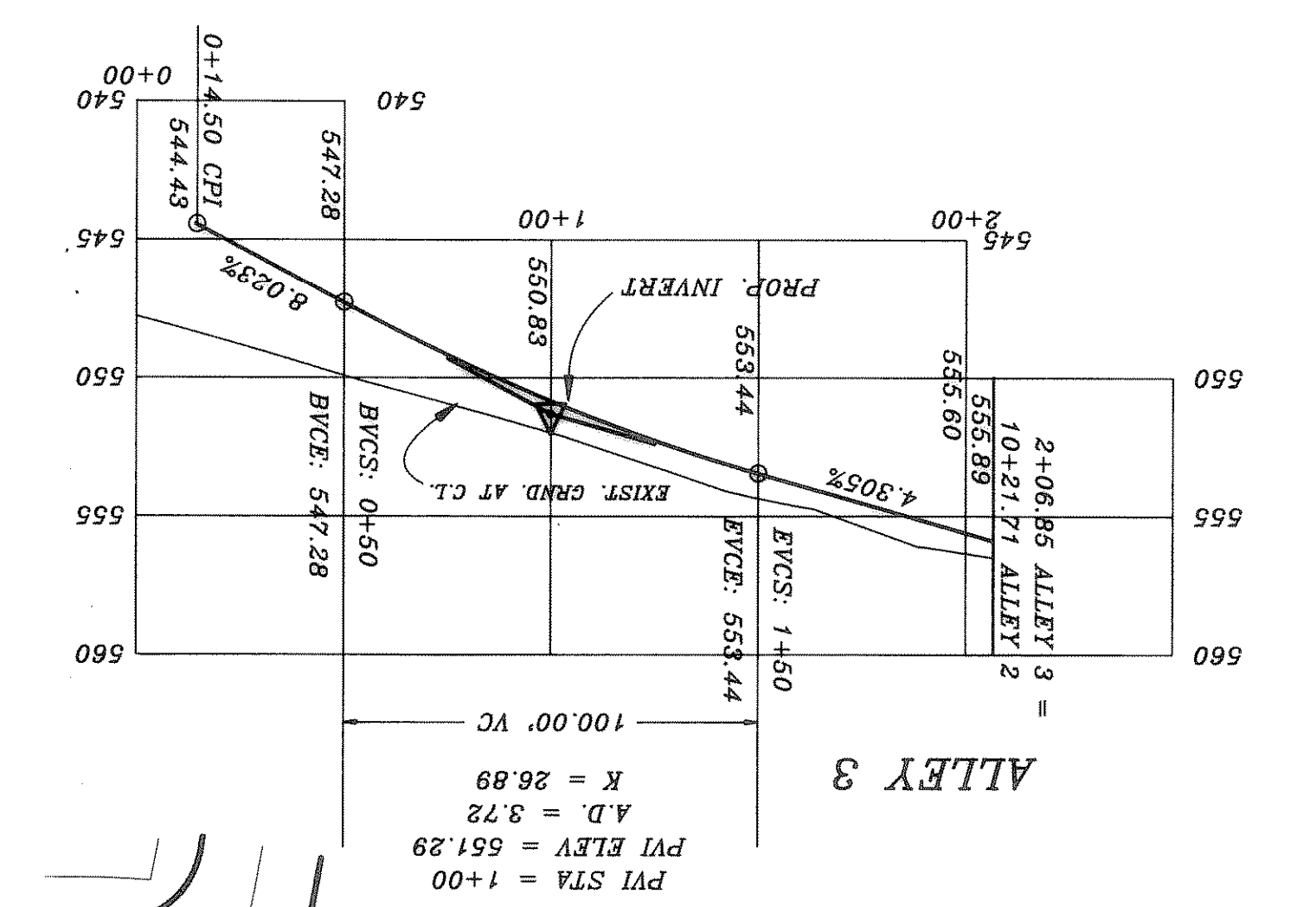
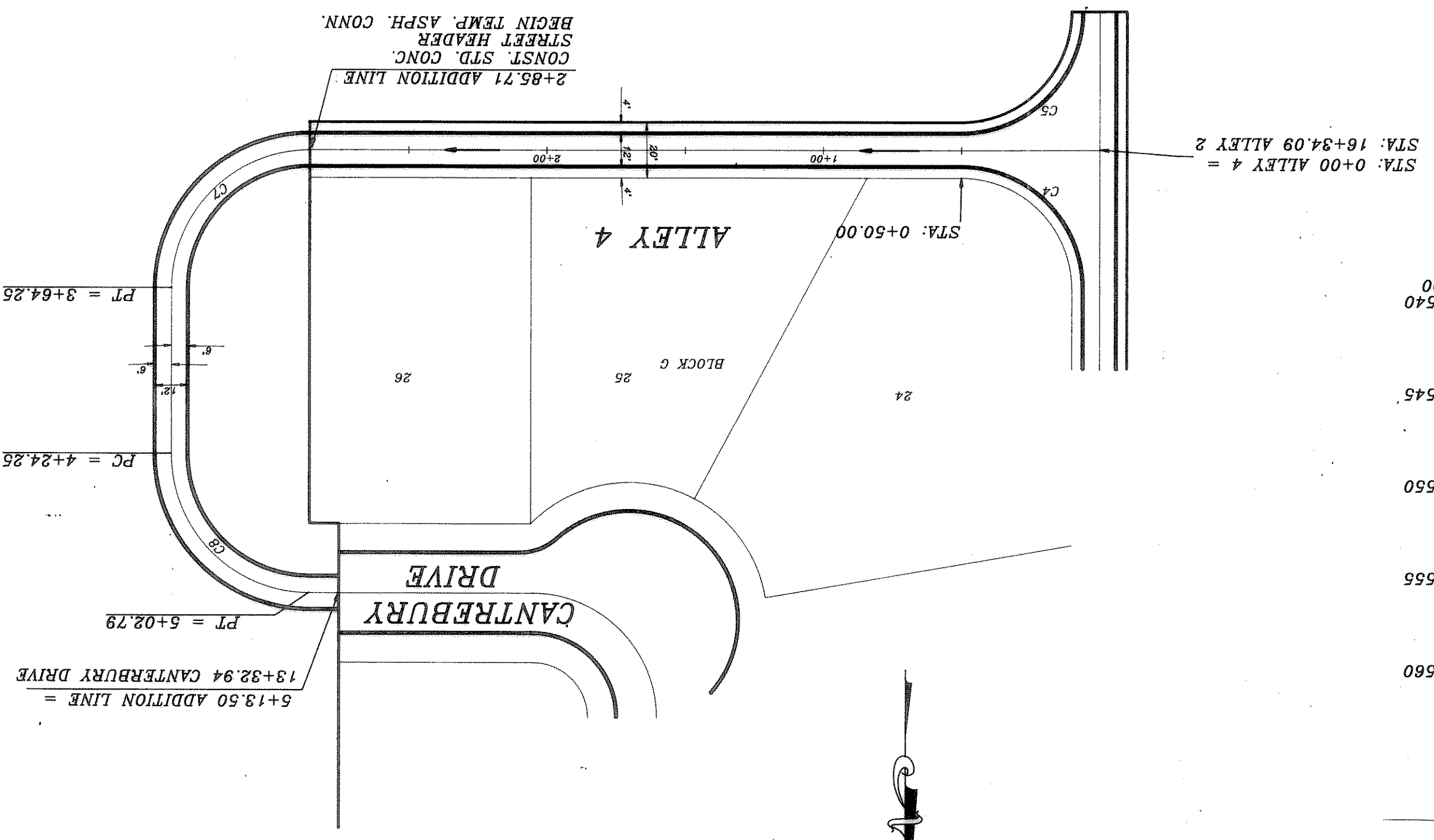
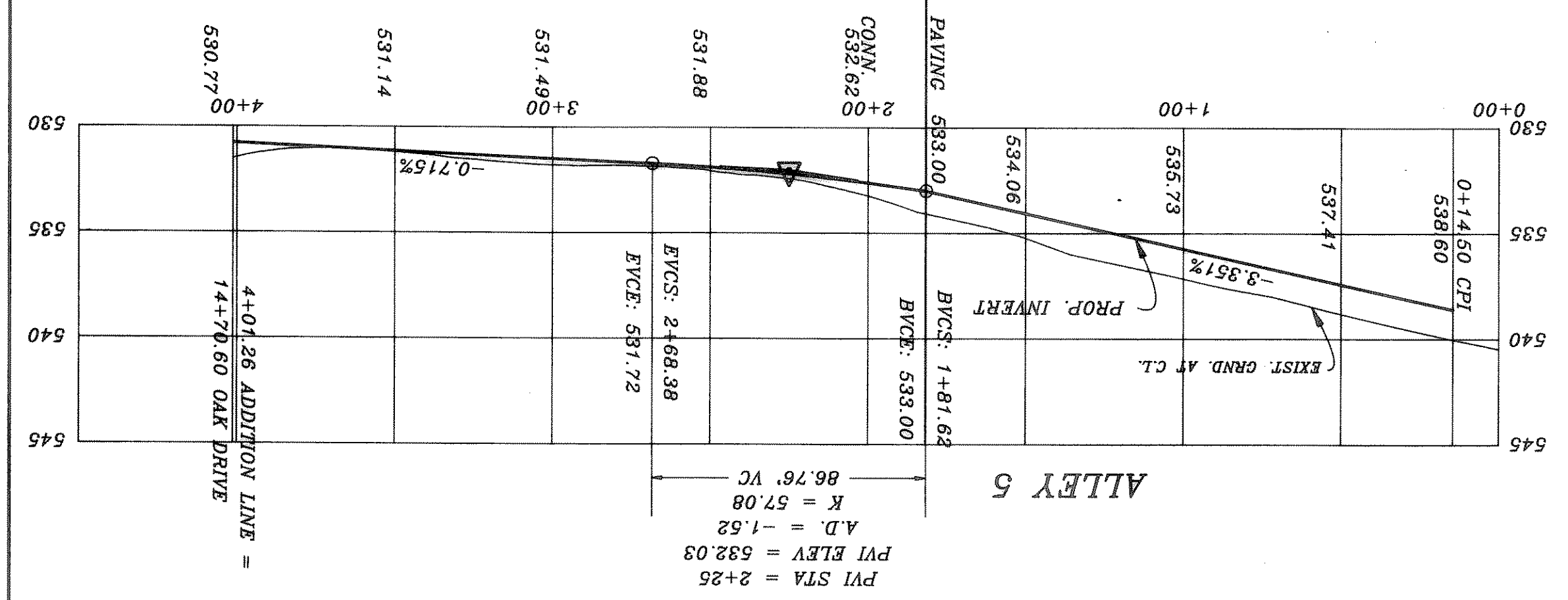
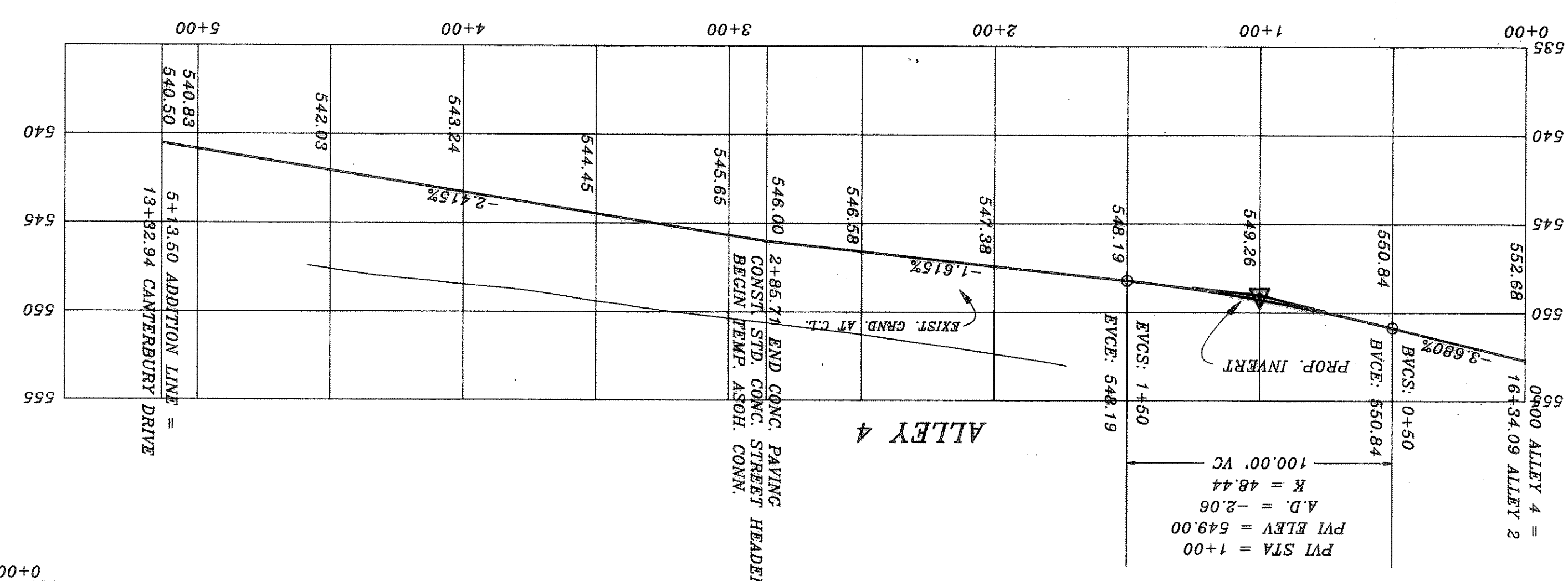


SHEET NO. 8	PROPOSED PAVING	HAROLD L. EVANS CONSULTING ENGINEER P.O. BOX 28282 2331 CUS THOMASSON ROAD, SUITE 102 DALLAS, TEXAS 75228. (214) 328-8133	DATE	11/12/94
			SCALE	1" = 40'
JOB NO. 93121	ALLEY 3, 4, & 5 FOXCHASE PHASE FOUR CITY OF ROCKWALL	DESIGN	REVISION DESCRIPTION	
			REV. PER CITY REVIEW	3/15/95
13			DATE	2/7/95

B.M. TOP OF EXIST. M.H. AT STA. 1+4+03.  
ELEVATION = 531.98  
21.5' LT. ON OAK DRIVE  
B.M. TOP OF EXIST. M.H. AT STA. 18+05.  
ELEVATION = 551.85  
40' RT. ON SHADY DALE LANE



CURVE	RADIUS	LENGTH	TANGENT	CHORD	BEARING	DELTA
C1	18.21	2.18	18.44	18.45	18.45	18.45
C2	44.00	61.20	71.45	55.14	14.22	108.34
C3	44.00	61.20	71.45	55.14	14.22	108.34
C4	44.00	61.20	71.45	55.14	14.22	108.34
C5	44.00	61.20	71.45	55.14	14.22	108.34
C6	44.00	61.20	71.45	55.14	14.22	108.34
C7	44.00	61.20	71.45	55.14	14.22	108.34
C8	44.00	61.20	71.45	55.14	14.22	108.34
C9	44.00	61.20	71.45	55.14	14.22	108.34
C10	44.00	61.20	71.45	55.14	14.22	108.34

