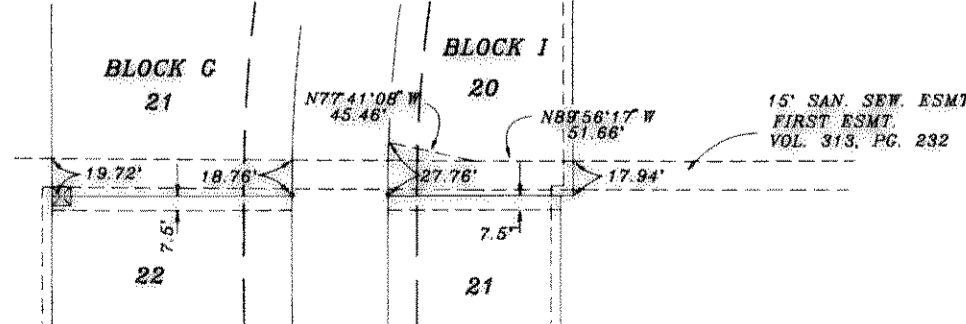
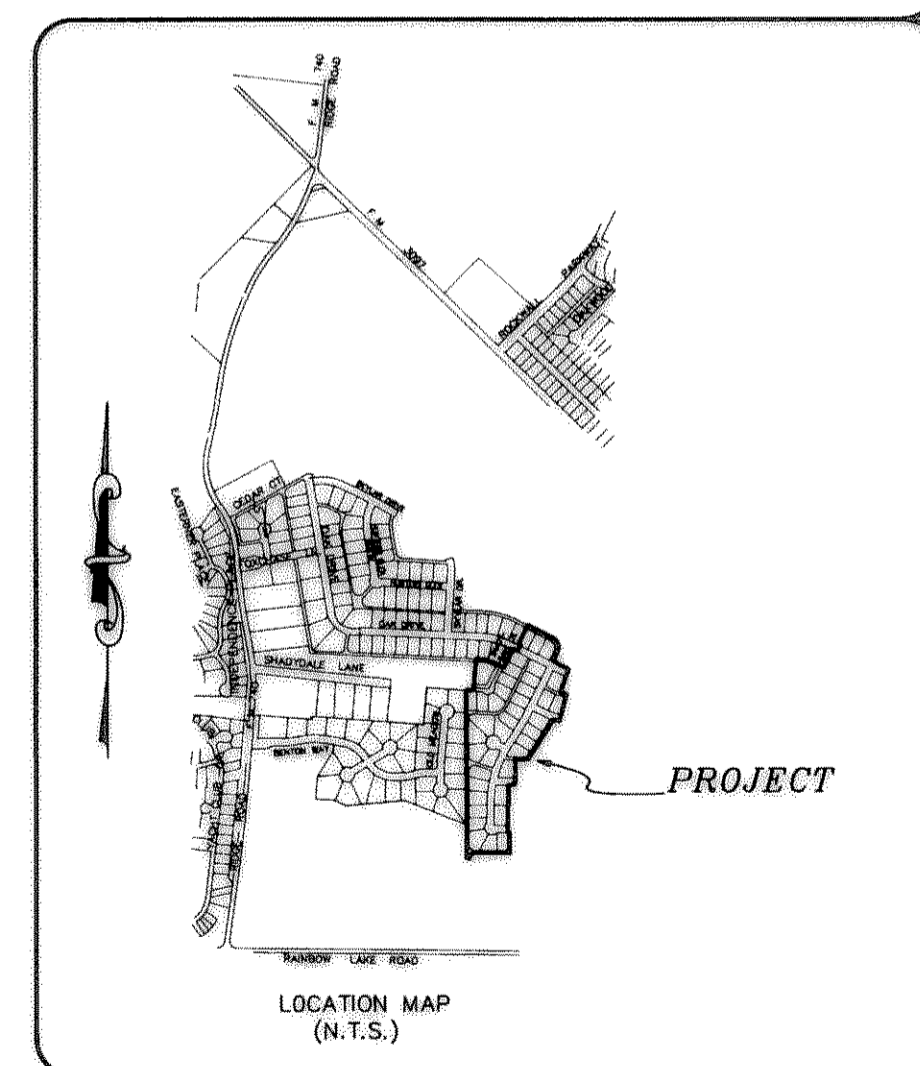
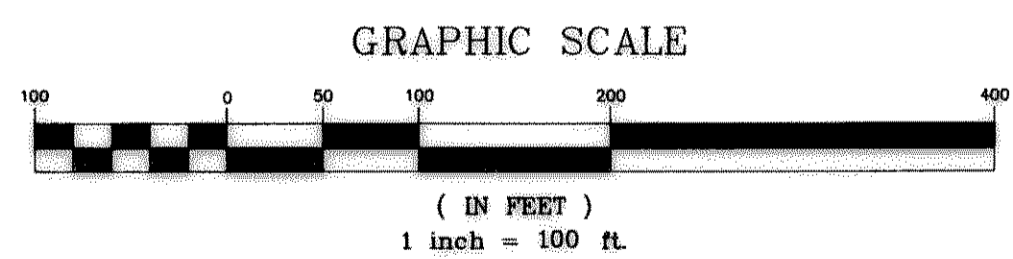
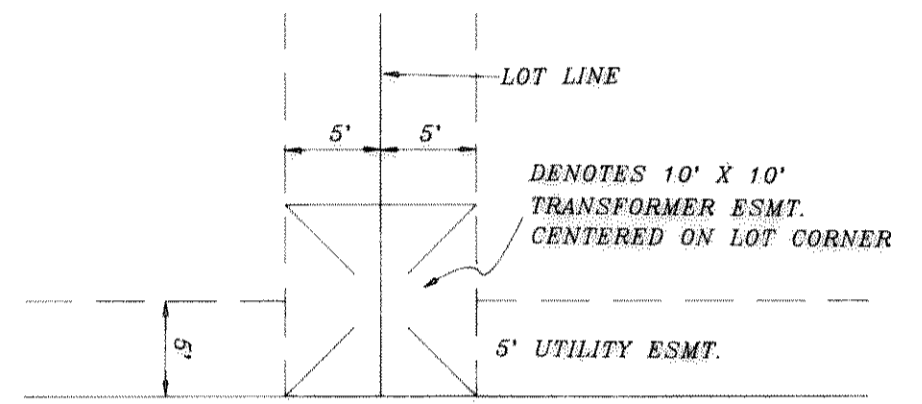


CURVE	RADIUS	LENGTH	TANGENT	CHORD	BEARING	DELTA
C1	75.00'	117.81'	75.00'	106.07'	S18°10'51"E	90°00'00"
C2	275.00'	28.81'	14.42'	28.80'	S66°10'56"E	06°00'10"
C3	445.00'	46.94'	23.49'	46.92'	S72°12'20"E	06°02'38"
C4	640.00'	42.96'	21.49'	42.95'	N73°18'16"W	03°50'45"
C5	60.00'	14.05'	7.05'	14.01'	S25°50'33"W	13°24'44"
C6	40.00'	62.83'	40.00'	56.57'	S44°57'30"W	90°00'00"
C7	180.00'	70.69'	35.80'	70.23'	N74°25'51"W	22°30'00"
C8	300.00'	31.43'	15.73'	31.42'	N66°10'56"W	06°00'10"
C9	350.00'	35.00'	17.51'	34.99'	N29°41'02"E	05°43'46"
C10	753.41'	428.55'	220.24'	422.79'	N16°15'13"E	32°35'26"
C11	615.00'	129.31'	64.89'	129.07'	N69°12'15"W	12°02'48"
C12	175.00'	37.40'	18.77'	37.33'	N83°55'11"W	12°14'37"
C13	50.00'	158.08'	499.50'	99.99'	N45°02'30"E	181°08'46"
C14	50.00'	261.80'	28.87'	50.00'	N30°42'30"E	300°00'00"
C15	50.00'	138.44'	265.21'	98.27'	N60°34'04"E	158°38'49"
C16	55.00'	86.40'	55.00'	77.78'	N18°10'58"W	90°00'14"
C17	80.00'	94.25'	53.45'	88.89'	N60°34'09"E	67°30'00"
C18	100.00'	117.81'	66.82'	111.11'	N60°34'09"E	67°30'00"
C19	40.00'	65.88'	43.17'	58.68'	N47°08'19"E	94°21'39"
C20	40.00'	75.80'	55.64'	64.96'	N54°14'42"E	108°34'25"
C21	40.00'	49.87'	28.76'	46.70'	N35°45'18"W	71°25'35"
C22	40.00'	62.83'	40.00'	56.57'	N45°02'30"E	90°00'00"
C23	465.00'	97.77'	49.06'	97.59'	N69°12'15"W	12°02'48"
C24	445.00'	46.62'	23.33'	46.60'	N66°10'56"W	06°00'10"
C25	40.00'	9.50'	4.77'	9.47'	N25°44'54"E	13°36'03"
C26	40.00'	40.08'	21.90'	38.42'	N61°15'13"E	57°24'34"
C27	40.00'	18.80'	9.58'	18.63'	N76°34'42"W	26°55'37"
C28	60.00'	28.20'	14.36'	27.94'	N76°34'42"W	26°55'37"
C29	45.00'	70.69'	45.00'	63.64'	N45°02'30"E	90°00'00"
C30	45.00'	53.01'	30.07'	50.00'	N60°34'08"E	67°30'01"

SURFACE ADJUSTED COORDINATES

	NORTHING	EASTING
1	7011128.431343	2592967.964305
2	7011040.451766	2593141.989520
3	7010939.680932	2593175.089117
4	7010877.210491	2593143.501580
5	7010833.976743	2593229.018726
6	7010822.347133	2593255.364463
7	7010663.443991	2593194.950958
8	7010649.105405	2593239.625379
9	7010460.550953	2593189.903966
10	7010472.890291	2593148.762992
11	7010460.278424	2593142.654602
12	7010196.055123	2592974.009545
13	7010195.988533	2592882.523610
14	7010020.988580	2592882.650986
15	7010020.952992	2592833.758055
16	7009881.542115	2592833.859527
17	7009881.537317	2592827.267741
18	7009691.537367	2592827.406035
19	7009691.545161	2592838.113175
20	7009546.545199	2592838.218715
21	7009546.373636	2592602.511635
22	7009506.344532	2592562.540761
23	7009506.329975	2592542.540766
24	7010677.536576	2592541.688284
25	7010673.770953	2592591.546284
26	7010893.146150	2592608.115024
27	7010889.479655	2592656.660553
28	7010870.629137	2592724.315985
29	7010831.827968	2592801.065408
30	7010961.231035	2592866.485968
31	7010945.383018	2592897.833635
32	7010990.004761	2592920.392447
33	7010999.028286	2592902.543750



HAROLD L. EVANS
CONSULTING ENGINEER
P.O. BOX 28355
2331 CUS THOMASSON ROAD, SUITE 102
DALLAS, TEXAS 75228. (214) 328-8133

SCALE	DATE	JOB No.
1" = 100'	2/10/95	93121

FOXCHASE PHASE FOUR
E. TEAL SURVEY, ABSTRACT. NO. 207
CITY OF ROCKWALL, ROCKWALL COUNTY, TEXAS
FOXCHASE DEVELOPMENT CORPORATION
P.O. BOX 369 ROCKWALL, TEXAS 75087 (214) 771-5253

STAVE HIMMELREICH