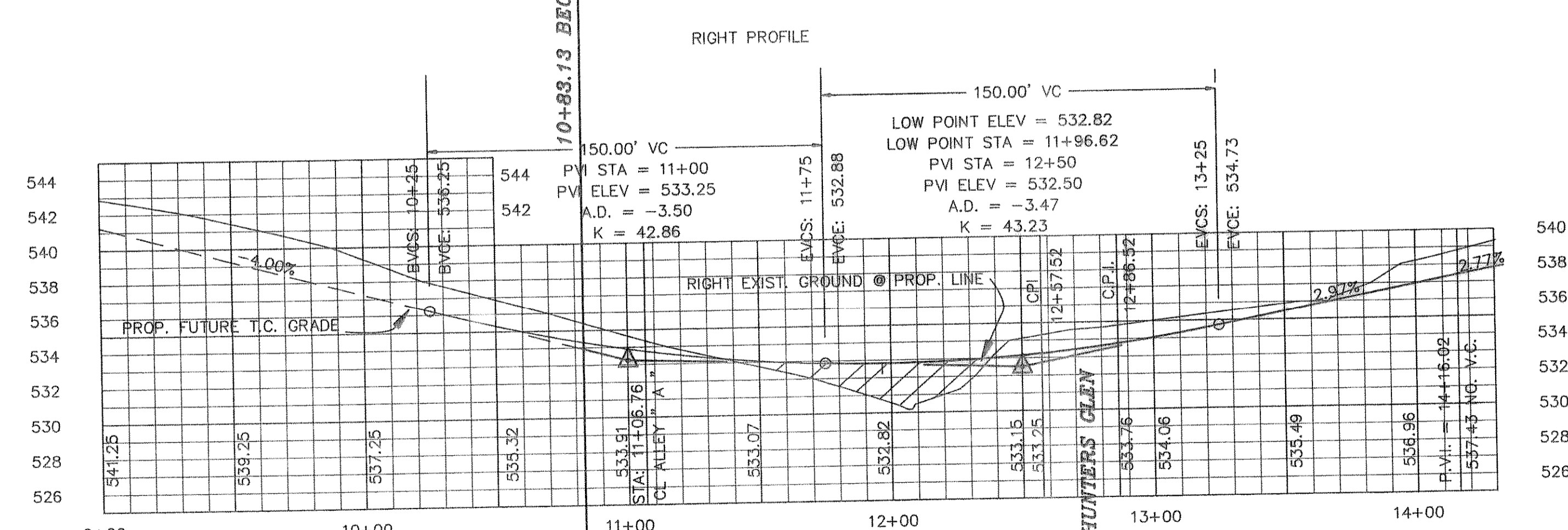
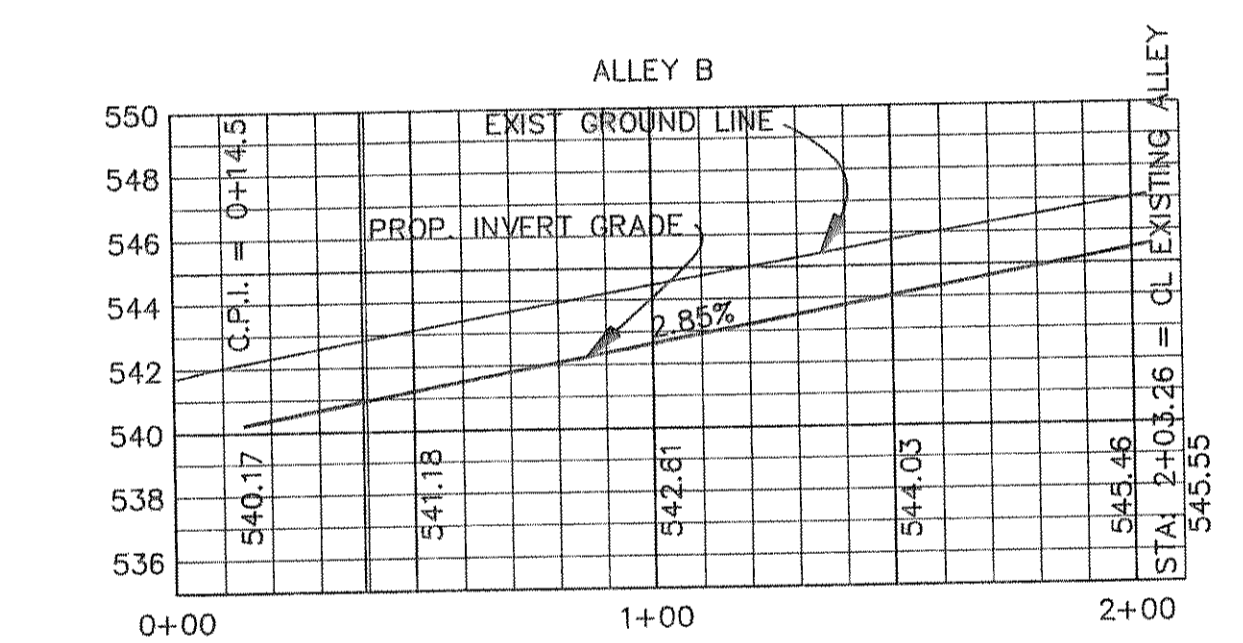
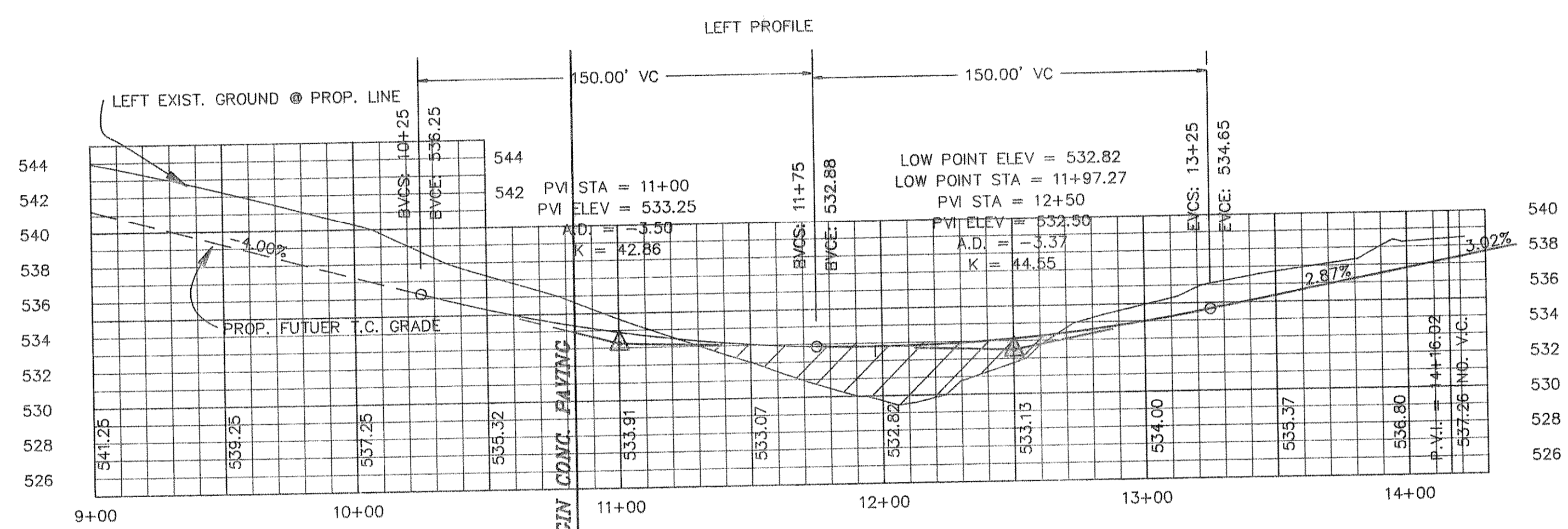
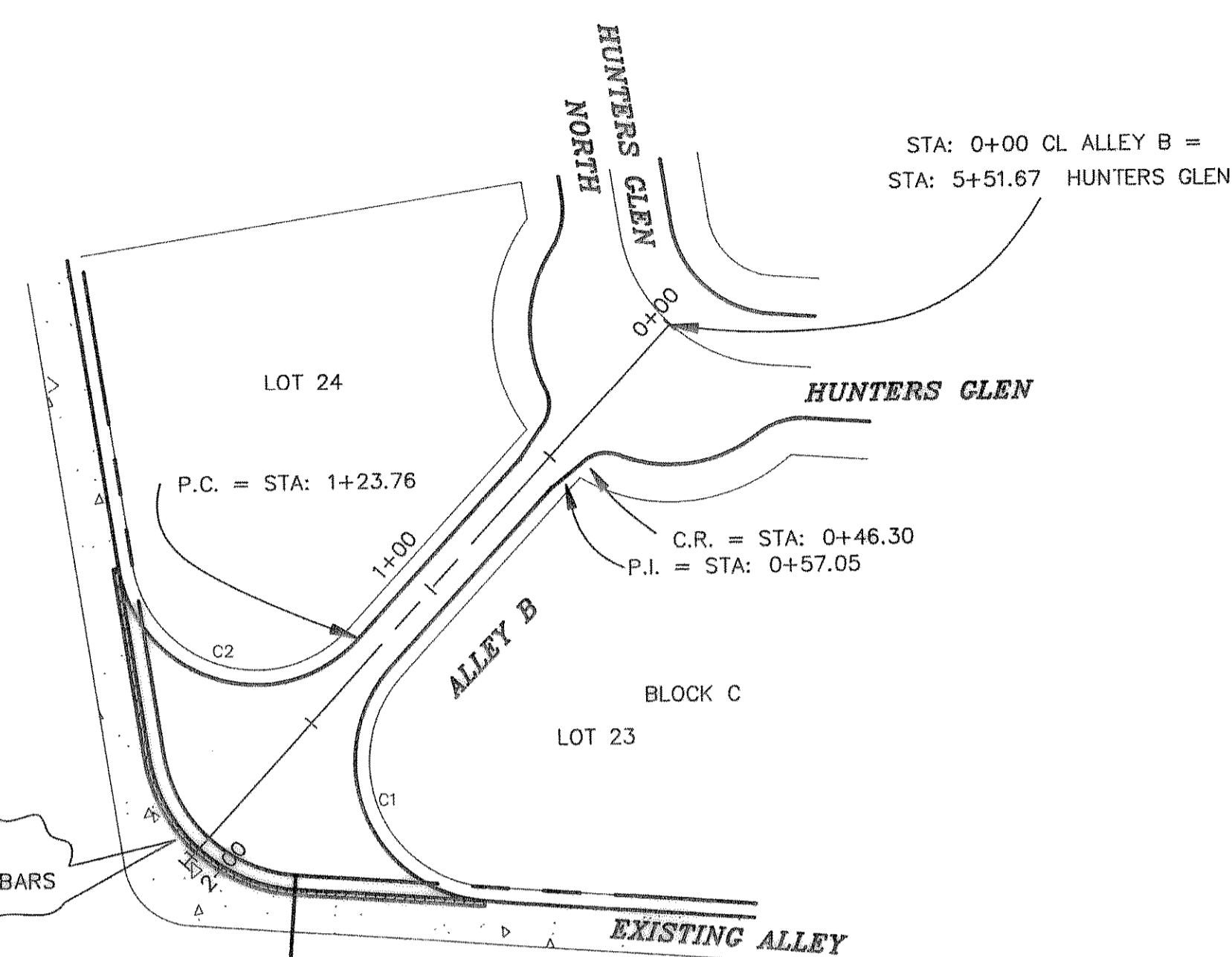


CURVE	RADIUS	LENGTH	TANGENT	CHORD	BEARING	DELTA
C1	35.00'	78.54'	72.68'	63.07'	S21°23'39"E	128°34'24"
C2	35.00'	78.54'	72.68'	63.07'	S72°49'14"E	128°34'25"
C3	250.00'	94.84'	47.99'	94.27'	S79°07'47"W	21°44'05"



B.M.
TOP OF EXISTING SANITARY SEWER MANHOLE AT SANITARY STATION 0+00 LINE "A".
ELEVATION = 523.63

B.M.
TOP OF CURB ON THE SOUTH SIDE OF OAK DRIVE OPPOSITE THE CORNER OF LOT 8 & LOT 9, BLOCK A OF FOXCHASE ADDITION.
ELEVATION = 550.50



AS BUILT

REVISION DESCRIPTION	DATE	SCALE	DESIGN	DRAWN	SHEET NO. 4
	6/30/94	HOR 1" = 40' VERT 1" = 6'	H.L.E.		
HAROLD L. EVANS CONSULTING ENGINEER P.O. BOX 28355 2331 GUS THOMASSON ROAD, SUITE 102 DALLAS, TEXAS 75228. (214) 328-8133				PAVING PLAN SKYLAR DRIVE & ALLEY B FOXCHASE PHASE 3 CITY OF ROCKWALL	
					JOB NO. 93121