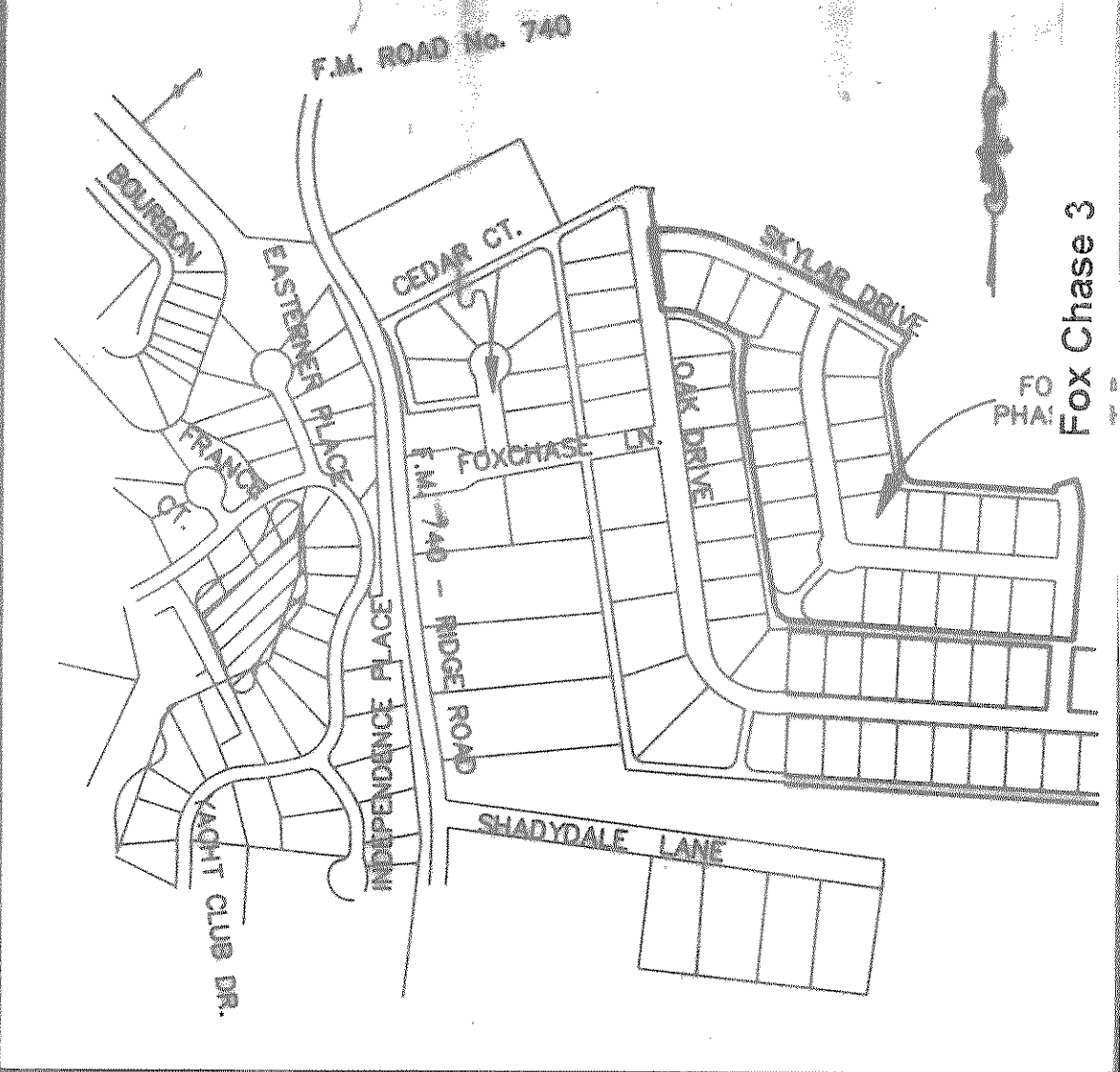
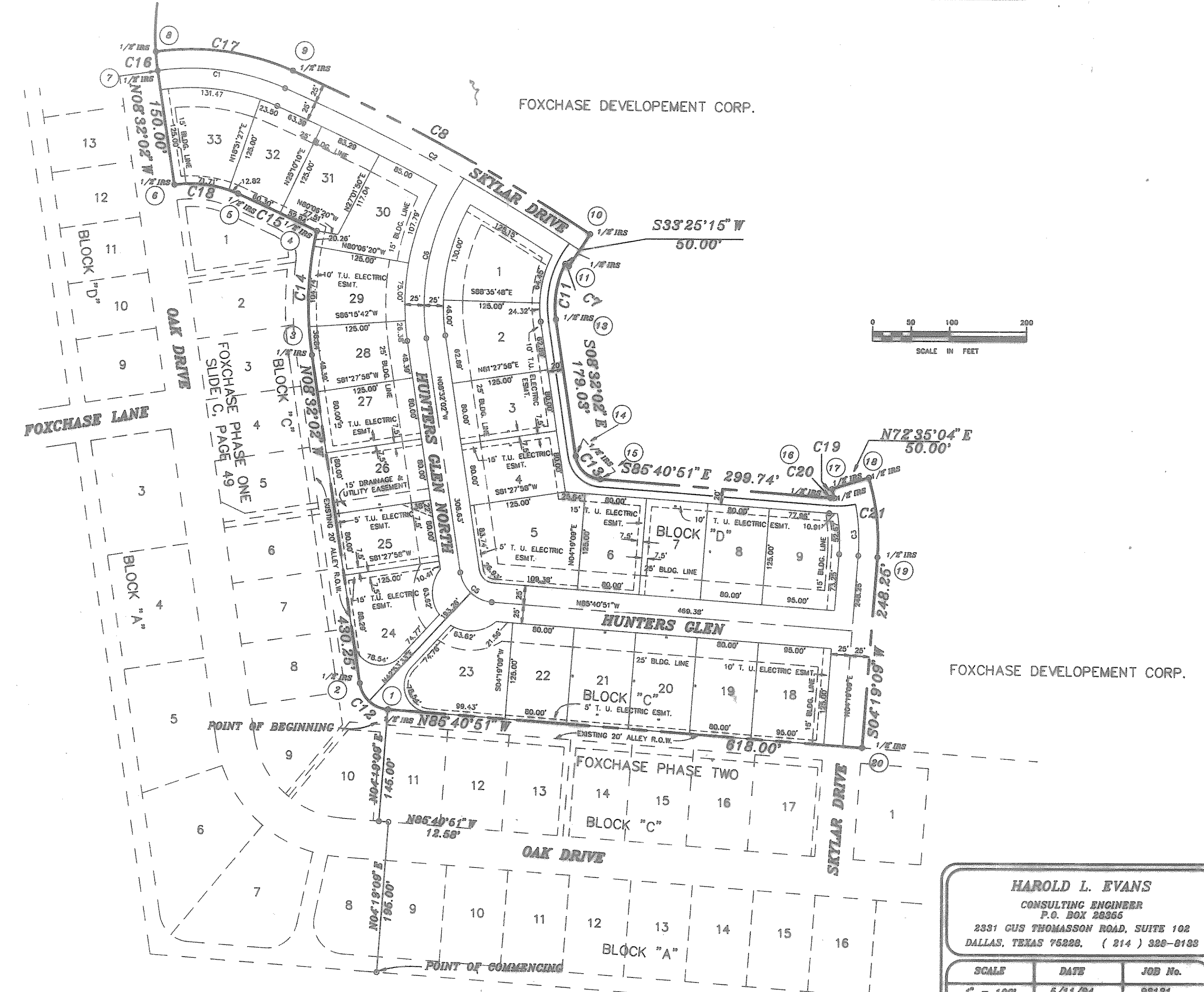


CURVE DATA

CURVE	RADIUS	LENGTH	TANGENT	CHORD	BEARING	DELTA
C1	300.00'	189.05'	88.84'	186.63'	N82°23'25"W	32°17'13"
C2	2589.27'	438.90'	218.97'	438.36'	N83°24'47"W	09°40'04"
C3	250.00'	87.02'	38.71'	86.82'	N83°21'37"W	15°21'33"
C4	45.00'	80.59'	39.88'	80.12'	S47°08'27"E	77°08'40"
C5	289.21'	217.74'	114.28'	212.97'	S23°57'37"E	42°59'17"
C6	289.21'	217.74'	114.28'	212.97'	N58°39'35"W	09°07'42"
C7	289.21'	217.74'	114.28'	212.97'	N81°24'47"W	09°40'04"
C8	2814.27'	441.11'	221.08'	440.59'	S89°09'34"W	35°23'11"
C9	123.21'	74.24'	38.38'	73.07'	S89°09'34"W	35°23'11"
C10	40.00'	53.88'	31.89'	48.88'	S47°08'27"E	77°08'40"
C11	35.00'	47.13'	27.91'	43.85'	S47°08'27"E	77°08'40"
C12	440.21'	181.84'	81.88'	180.93'	S01°59'59"W	21°03'54"
C13	2439.27'	113.24'	56.83'	113.23'	N84°55'01"W	02°39'36"
C14	314.40'	25.02'	12.52'	25.02'	S06°15'13"E	04°33'38"
C15	325.00'	182.15'	93.55'	179.77'	N82°18'10"W	32°08'42"
C16	150.00'	84.53'	43.42'	83.41'	N82°23'25"W	32°17'13"
C17	225.00'	12.20'	6.10'	12.20'	N15°51'45"W	03°08'21"
C18	115.00'	5.25'	2.63'	5.25'	S86°59'19"E	02°36'58"
C19	275.00'	104.32'	52.79'	103.69'	N06°32'53"W	21°44'04"

SURFACE ADJUSTED COORDINATES

	NORTHING	EASTING
1	7011292.33020000	2591837.32820000
2	7011325.28080703	2591800.78154433
3	7011751.78726768	2591736.93464008
4	7011912.60415738	2591742.54717391
5	7011980.60624216	2591639.89491595
6	7011971.65205863	2591557.31816618
7	7012119.89128525	2591535.05893718
8	7012144.88989882	2591632.33168512
9	7012120.78185073	2591710.49433811
10	7011908.86280810	2592087.36327480
11	7011868.23022830	2592069.82405480
12	7011871.39085080	2592069.82281390
13	7011799.25362290	2592053.39166050
14	7011622.20817350	2592079.85843780
15	7011592.50138540	2592111.93501120
16	7011569.92731834	2592410.82524945
17	7011581.38224440	2592412.73393709
18	7011596.34712010	2592480.44192777
19	7011493.32855130	2592472.26703310
20	7011243.78750795	2592453.57110088



LOCATION MAP



FILED FOR RECORD
 ROCKWALL CO., TEXAS
 94 JUN 24 AM 8:53
 PUBLIC CLERK
 BY: [Signature] DEPUTY

HAROLD L. EVANS
 CONSULTING ENGINEER
 P.O. BOX 28966
 2331 GUS THOMASSON ROAD, SUITE 102
 DALLAS, TEXAS 75288. (214) 928-6189

SCALE: 1" = 100'
 DATE: 6/11/04
 JOB No.: 88121

FOXCHASE PHASE 3
 E. TEAL SURVEY, ABSTRACT 207
 CITY OF ROCKWALL, ROCKWALL COUNTY, TEXAS
 FOXCHASE DEVELOPEMENT CORPORATION
 P.O. BOX 989, ROCKWALL, TEXAS 75087 (214) 771-6968