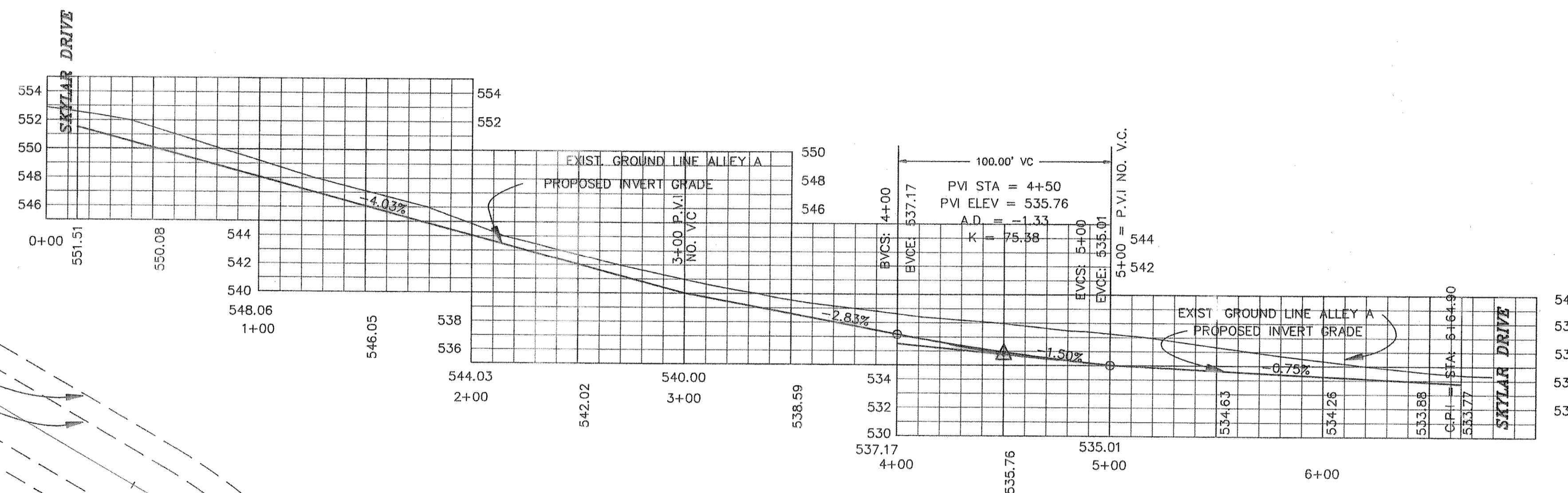
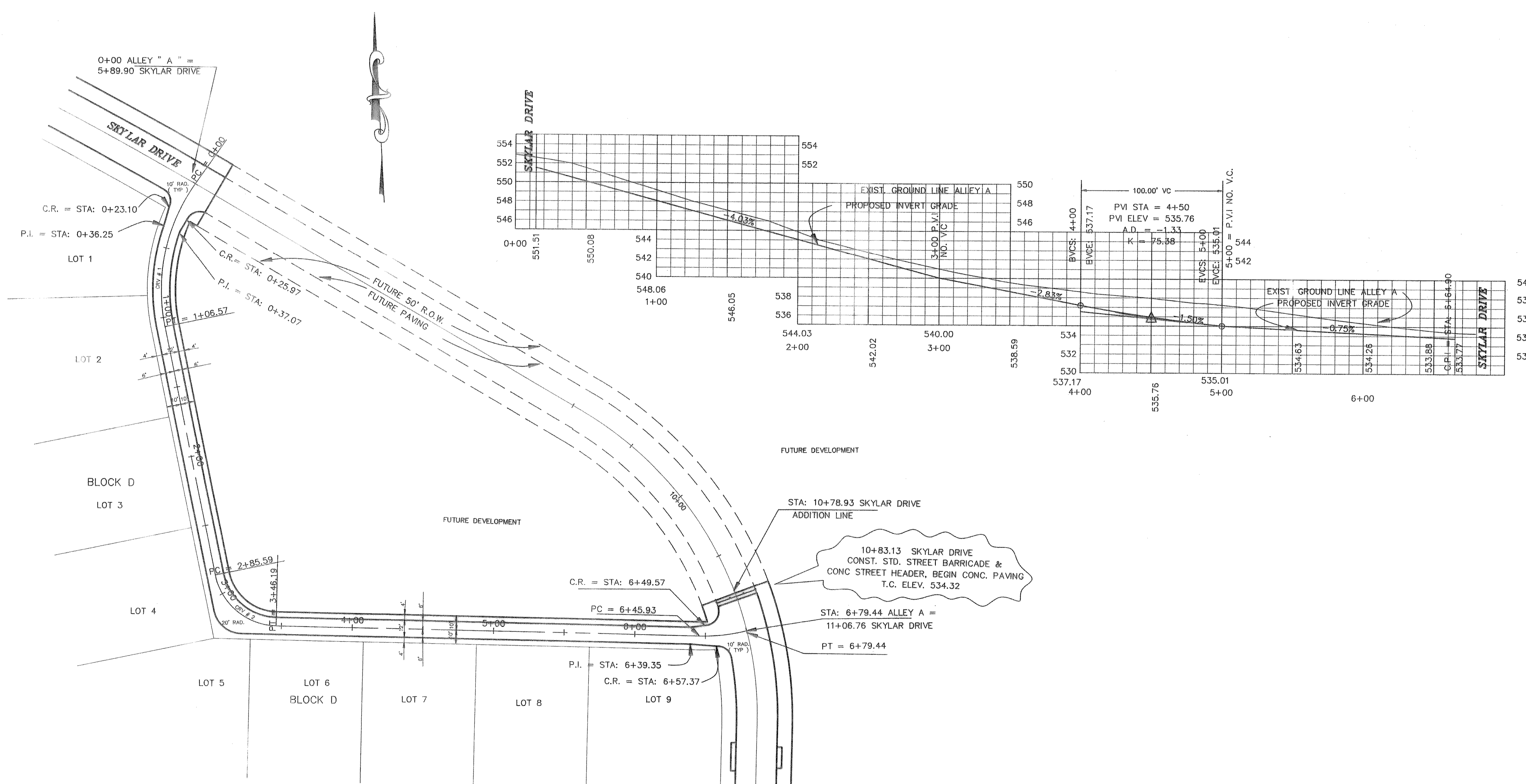
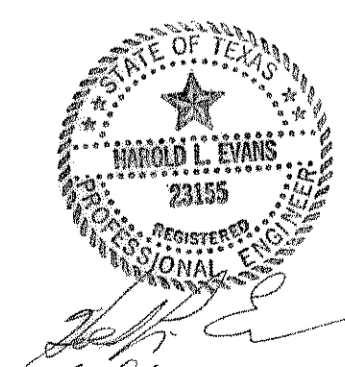


| CURVE | RADIUS | LENGTH | TANGENT | CHORD | BEARING | DELTA |
|---------|---------|---------|---------|---------|-------------|-----------|
| CRV # 1 | 130.21' | 106.57' | 56.47' | 103.62' | S14°54'43"W | 40°53'31" |
| CRV # 2 | 45.00' | 60.59' | 33.89' | 56.12' | S47°06'27"E | 77°08'49" |



B.M.
TOP OF EXISTING SANITARY SEWER MANHOLE AT SANITARY STATION 0+00 LINE "A".
ELEVATION = 523.63

B.M.
TOP OF CURB ON THE SOUTH SIDE OF OAK DRIVE OPPOSITE THE CORNER OF LOT 8 & LOT 9, BLOCK A OF FOXCHASE ADDITION.
ELEVATION = 550.50



AS BUILT

| | | | | | | | |
|---|--|-----------------|---------------------------------------|------------------|-----------------|---|----------------------------|
| REVISION DESCRIPTION _____ _____ _____ | | DATE 6/30/94 | SCALE HOR 1" = 40' VERT 1" = 6' | DESIGN H.L.E. | DRAWN K.E.R. | HAROLD L. EVANS CONSULTING ENGINEER P.O. BOX 28355 2331 CUS THOMASSON ROAD, SUITE 102 DALLAS, TEXAS 75228, (214) 328-8133 | SHEET NO. 6 OF 10 |
| PAVING PLAN ALLEY A FOX CHASE III CITY OF ROCKWALL | | | | | | | |