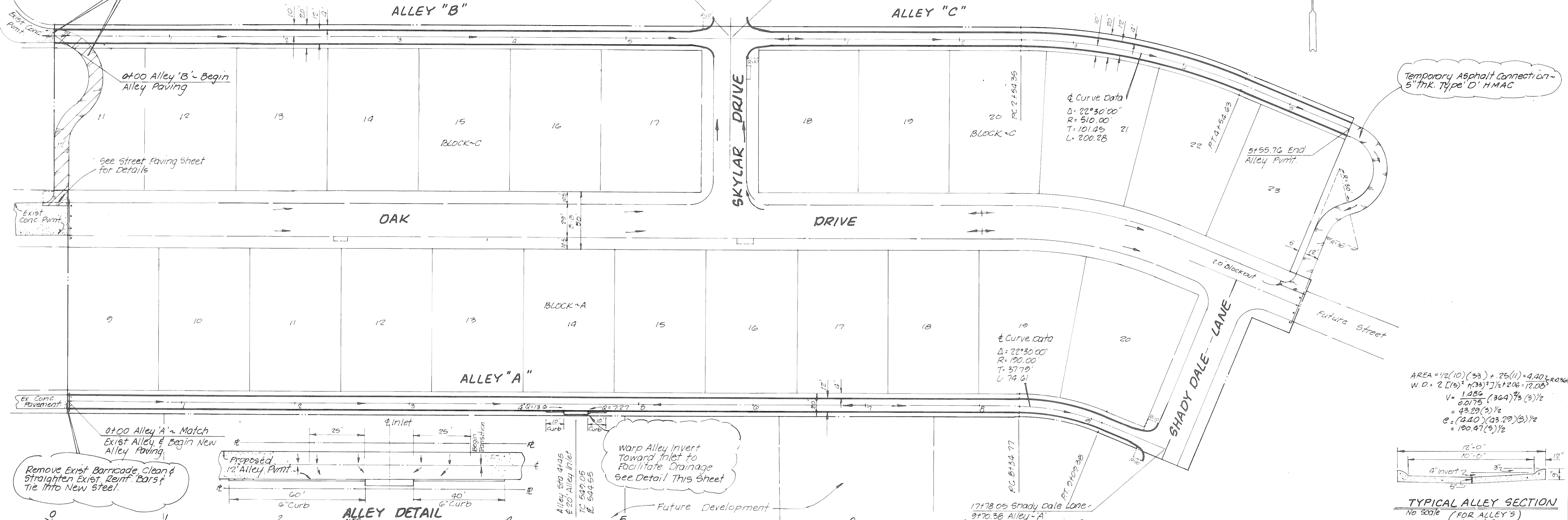
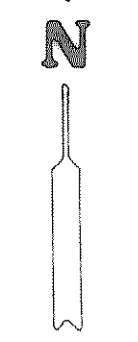


Breakout & Remove Exist. Temp. Asphalt Pmnt. Clean & Straighten Exist. Reinf. Bars & Tie Into New Steel ~ Match Exist. Conc. Alley Pmnt.

Future Development



$$\text{AREA} = \frac{1}{2}(10)(33) + \frac{25(11) - 4.40}{2} \text{R.O.} \times 2$$

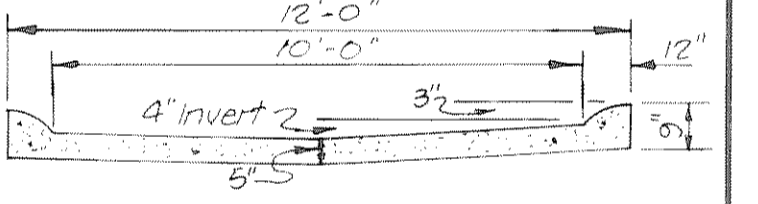
$$\text{W.D.} = 2 \left[\frac{1}{2}(33) + \frac{1}{2}(33) \right] \times \frac{1}{2} + 206 = 12.05'$$

$$V = \frac{1.080}{0.0175} (369) \frac{1}{2} (3) \frac{1}{2}$$

$$= 43.29 (3) \frac{1}{2}$$

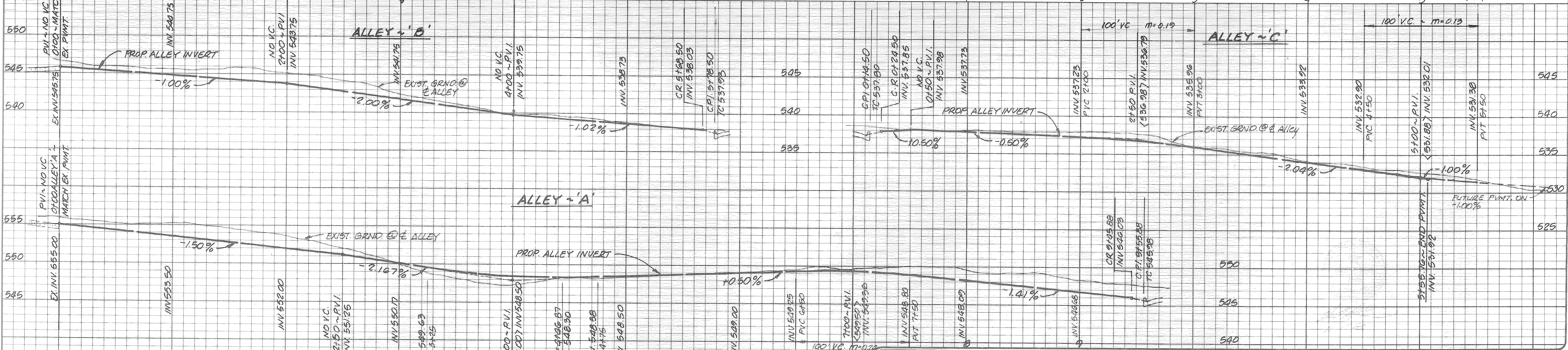
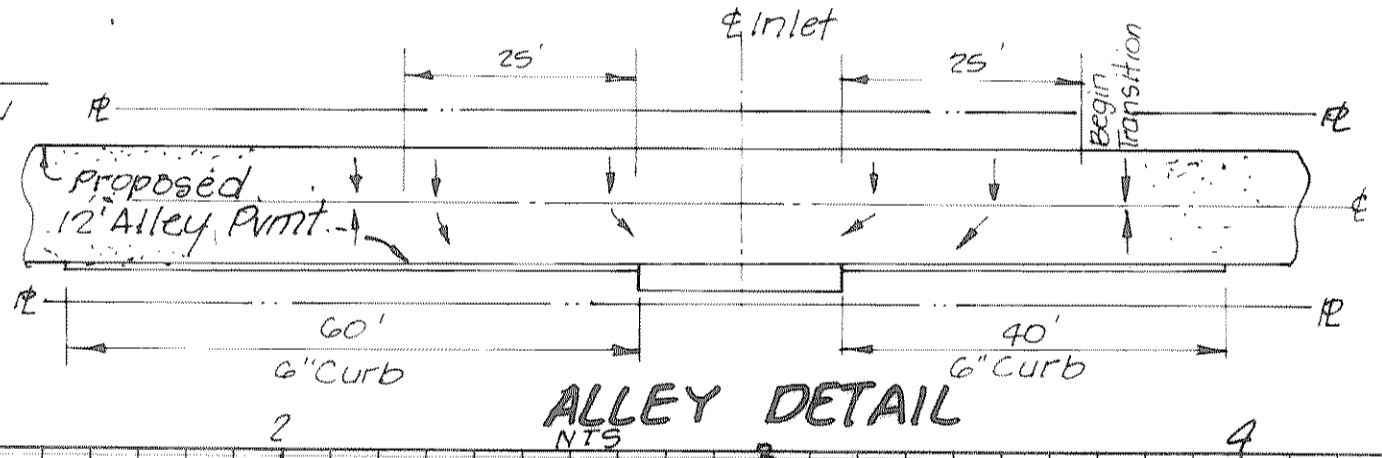
$$C = (4.40)(23.29) \frac{1}{2}$$

$$= 100.47 (3) \frac{1}{2}$$



Remove Exist. Barricade, Clean & Straighten Exist. Reinf. Bars & Tie Into New Steel.

Warp Alley Invert Toward Inlet to Facilitate Drainage See Detail This Sheet



| | | | | |
|--|------------------|--|------------------|---|
| HAROLD L. EVANS & ASSOCIATES Consulting Engineers P. O. Box 28355 2331 Gus Thomasson Road, Suite 102 Dallas, Texas 75228 (214) 328-8133 | | PAVING PLANS ALLEY'S ~A, B & C FOXCHASE PHASE TWO CITY OF ROCKWALL, ROCKWALL COUNTY, TEXAS | | SHEET NO. 4 OF 8 |
| REVISION DESCRIPTION | DATE 11-15-93 | SCALE 1" = 40' Horiz 1" = 6' Vert. | DESIGN H.L.E. | DRAWN G.L.S. |
| JOB NO. 15721 | | | | |