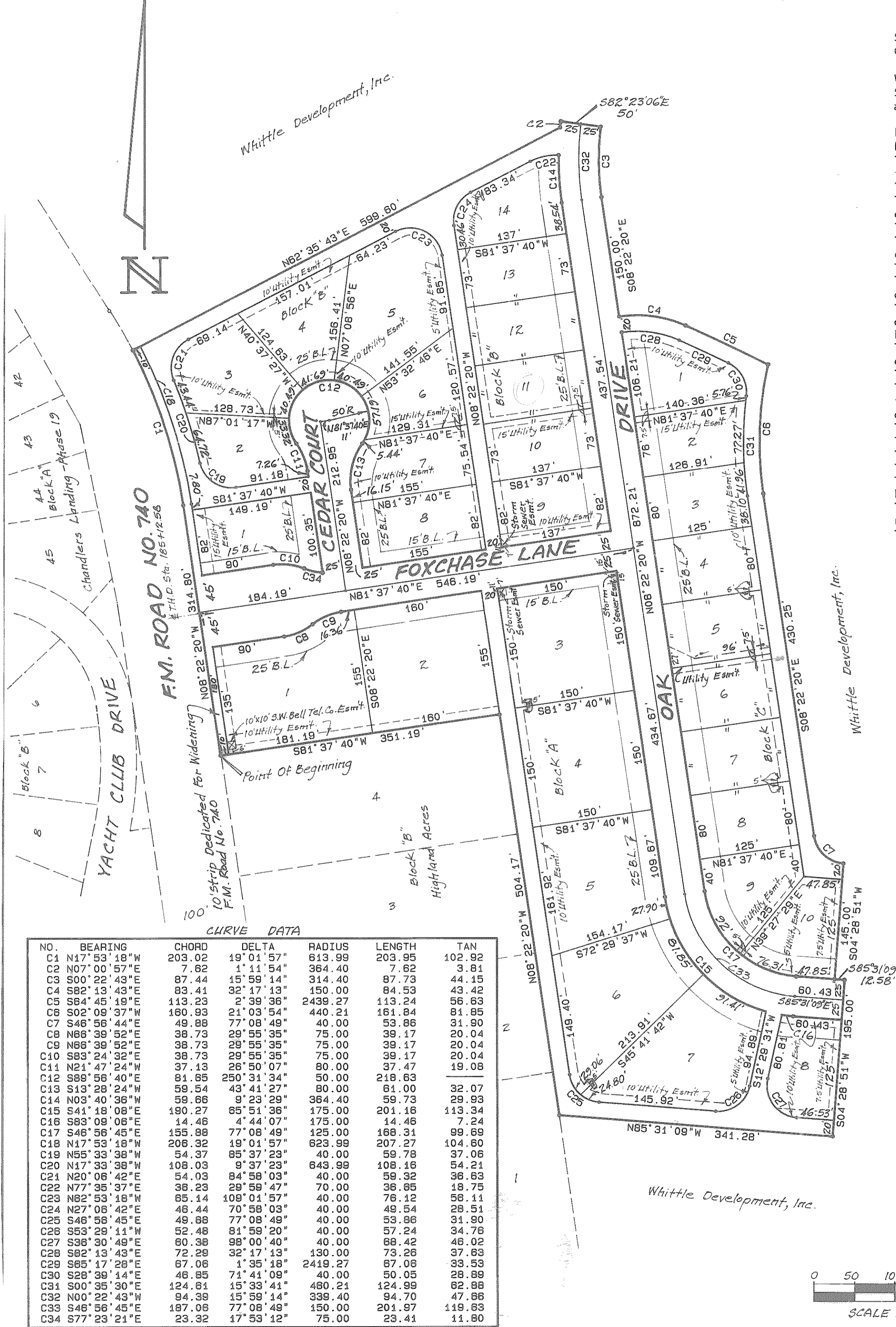


WHEREAS, Whittle Development, Inc., is the owner of a tract of land situated in Rockwall County, Texas, part of the E. Teal Survey, Abstract No. 207, being part of Tract 5, as recorded in Volume 184, Page 490, Deed Records of Rockwall County, Texas, and being more particularly described as follows:

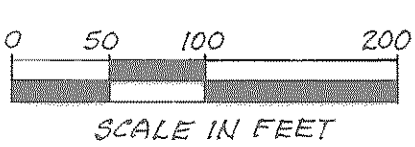
BEGINNING at an iron rod on the Easterly line of F.M. 740 at the most Northerly Southwest corner of said Tract 5 and at the Northwest corner of Lot 4, Block B of Highland Acres as recorded in Slide A, Page 91, Plat Records, Rockwall County, Texas;
 THENCE: North 8° 22' 20" West a distance of 314.80 feet along said Easterly line to the point of curvature of a circular curve to the left having a central angle of 19° 01' 57" and a radius of 613.99 feet;
 THENCE: Along said curve and said Easterly line an arc distance of 203.95 feet to an iron rod for a corner;
 THENCE: North 62° 35' 43" East a distance of 599.60 feet to an iron rod for a corner on a circular curve to the right having a central angle of 1° 11' 54", a radius of 364.40 feet and a chord that bears North 7° 00' 57" East a distance of 7.62 feet;
 THENCE: Along said curve an arc distance of 7.62 feet to an iron rod for a corner;
 THENCE: South 82° 23' 06" East a distance of 50.00 feet to an iron rod for a corner on a circular curve to the left having a central angle of 15° 59' 14", a radius of 314.40 feet, and a chord that bears South 0° 22' 43" East a distance of 87.44 feet;
 THENCE: Along said curve an arc distance of 87.73 feet to an iron rod for a corner;
 THENCE: South 8° 22' 20" East a distance of 150.00 feet to an iron rod for a corner on a circular curve to the right having a central angle of 32° 17' 13", a radius of 150.00 feet, and a chord that bears South 82° 13' 43" East a distance of 83.41 feet;
 THENCE: Along said curve an arc distance of 84.53 feet to an iron rod for a corner at the point of compound curvature of a circular curve to the right having a central angle of 2° 39' 36", a radius of 2439.27 feet, and a chord that bears South 64° 45' 19" East a distance of 113.23 feet;
 THENCE: Along said curve an arc distance of 113.24 feet to an iron rod for a corner on a circular curve to the left having a central angle of 21° 03' 54", a radius of 440.21 feet, and a chord that bears South 2° 09' 37" West a distance of 160.93 feet;
 THENCE: Along said curve an arc distance of 161.84 feet to an iron rod for a corner;
 THENCE: South 8° 22' 20" East a distance of 430.25 feet to an iron rod for a corner at the point of curvature of a circular curve to the left having a central angle of 77° 08' 49", a radius of 40.00 feet, and a chord that bears South 46° 56' 44" East a distance of 49.88 feet;
 THENCE: Along said curve an arc distance of 53.86 feet to an iron rod for a corner;
 THENCE: South 4° 28' 51" West a distance of 145.00 feet to an iron rod for a corner;
 THENCE: South 85° 31' 09" East a distance of 12.58 feet to an iron rod for a corner;
 THENCE: South 4° 28' 51" West a distance of 195.00 feet to an iron rod for a corner;
 THENCE: North 85° 31' 09" West a distance of 311.28 feet to an iron rod for a corner on the West line of said Tract 5 and on the East line of Block B of the previously mentioned Highland Acres;
 THENCE: North 8° 22' 20" West a distance of 504.17 feet with the West line of Tract 5 and the East line of Block B to an iron rod for a corner at the Northeast corner of Lot 4 of said Block B;
 THENCE: South 81° 37' 40" West a distance of 351.19 feet to the Point of Beginning and Containing 14.356 Acres of Land.

Fox Chase 1



NO.	BEARING	CHORD	DELTA	RADIUS	LENGTH	TAN
C1	N17° 53' 18" W	203.02	19° 01' 57"	613.99	203.95	102.92
C2	N07° 00' 57" E	7.62	1° 11' 54"	364.40	7.62	3.81
C3	S01° 22' 43" E	87.44	15° 59' 14"	314.40	87.73	44.15
C4	S82° 23' 06" E	89.41	32° 17' 13"	150.00	84.53	43.42
C5	S84° 45' 19" E	113.23	2° 39' 36"	2439.27	113.24	56.63
C6	S02° 09' 37" W	160.93	21° 03' 54"	440.21	161.84	81.85
C7	S46° 56' 44" E	49.88	77° 08' 49"	40.00	53.86	31.90
C8	N86° 39' 52" E	38.73	29° 55' 35"	75.00	39.17	20.04
C9	N86° 39' 52" E	38.73	29° 55' 35"	75.00	39.17	20.04
C10	S89° 24' 32" E	39.78	25° 55' 35"	75.00	39.17	20.04
C11	N21° 47' 24" W	37.15	28° 50' 07"	80.00	37.47	18.08
C12	S88° 56' 40" E	81.85	25° 31' 34"	50.00	218.63	
C13	S13° 28' 24" W	59.54	43° 41' 27"	80.00	61.00	32.07
C14	N03° 40' 36" W	59.66	9° 23' 29"	364.40	59.73	29.93
C15	S41° 18' 08" E	190.27	85° 51' 36"	175.00	201.16	113.34
C16	S83° 09' 08" E	14.46	4° 44' 07"	175.00	14.46	7.24
C17	S46° 56' 45" E	155.88	77° 08' 49"	125.00	168.31	99.68
C18	N17° 53' 18" W	203.92	19° 01' 57"	623.99	207.97	104.80
C19	N55° 33' 38" W	54.37	85° 37' 23"	40.00	59.78	37.06
C20	N17° 33' 38" W	108.03	9° 37' 23"	643.99	108.16	54.21
C21	N20° 08' 42" E	54.03	84° 58' 03"	40.00	59.32	36.63
C22	N77° 35' 37" E	38.23	29° 59' 47"	70.00	38.85	18.75
C23	N82° 53' 18" W	65.14	109° 01' 57"	40.00	76.12	58.11
C24	N27° 08' 42" E	48.44	7° 05' 03"	40.00	48.54	28.54
C25	S48° 58' 45" E	49.88	77° 08' 49"	40.00	53.86	31.90
C26	S53° 29' 11" W	52.48	81° 58' 20"	40.00	57.24	34.76
C27	S38° 30' 49" E	60.38	98° 00' 40"	40.00	68.42	48.02
C28	S82° 13' 43" E	72.29	32° 17' 13"	130.00	73.26	37.63
C29	S85° 17' 28" E	67.06	1° 35' 18"	2419.27	67.06	33.53
C30	S28° 39' 14" E	48.85	71° 41' 09"	40.00	50.05	28.89
C31	S00° 35' 30" E	124.81	15° 33' 41"	480.21	124.99	62.88
C32	N09° 22' 43" W	94.38	15° 59' 14"	339.40	94.79	47.88
C33	S46° 56' 45" E	187.05	77° 08' 49"	150.00	201.97	119.83
C34	S77° 23' 21" E	23.32	17° 53' 12"	75.00	23.41	11.80

BLOCK A		BLOCK B		BLOCK C	
Lot	Sq. Ft.	Lot	Sq. Ft.	Lot	Sq. Ft.
1	25,536	1	12,678	7	11,228
2	24,800	2	10,701	8	12,710
3-5	22,500	3	14,182	9	11,234
6	22,501	4	12,303	10-13	10,001
7	22,594	5	20,998	14	11,187
8	10,000	6	10,725		
				10	10,751



HAROLD L. EVANS
CONSULTING ENGINEER
2331 GUS THOMASSON RD. SUITE 102
DALLAS, TEXAS 75228
PHONE (214) 328-8133

FOXCHASE - PHASE ONE
EDWARD TEAL SURVEY, ABSTRACT NO. 207
CITY OF ROCKWALL, ROCKWALL COUNTY, TEXAS
WHITTLE DEVELOPMENT, INC. ~ OWNER
100 COUNTRY CLUB DRIVE, HEATH, TEXAS 75087 TEL. 771-5238

SCALE	DATE	JOB NO.
1"=100'	7-6-88	87201

1/9