

SANITARY SEWER SYSTEM SUMMARY

MANHOLE	FROM	TO	RESIDENTIAL FLOW		Commercial or Industrial Point Source Flow		Peak Infiltration/Inflow (gpm)	Total Design Flow Maximum Wet-Weather Day (gpm)	Accum. in Pipe	
			CUMULATIVE POPULATION	AVERAGE DRY-DAY FLOW (gpm)	MAXIMUM DRY-DAY FLOW (gpm)	Units*				Average Flow (gpm)
LINE B	2+13.47	0+98.70	-----	-----	-----	6.4 Ac.	22.4	0.06	22.46	22.46
LINE C	6+41.75	3+62.00	9 Lots	25.2	1.75	4.38	-----	0.03	4.41	4.41
LINE A	3+62.00	0+00	1 Lot	2.8	0.19	0.49	-----	0.04	0.53	4.94
	28+71.69	23+28.95	9 Lots	25.2	1.75	4.38	-----	0.06	4.44	26.9
	23+28.95	18+29.78	10 Lots	28.0	1.94	4.86	-----	0.06	4.92	36.76
	18+29.78	14+01.58	10 Lots	28.0	1.94	4.86	-----	0.05	4.91	41.67
	14+01.58	10+66.58	8 Lots	22.4	1.56	3.89	-----	0.04	3.93	45.60
	10+66.58	5+09.58	26 Lots	72.8	5.06	12.64	-----	0.07	12.71	58.31
	5+09.58	2+70.58	12 Lots	33.6	2.33	5.83	-----	0.03	5.86	64.17
	2+70.58	0+13.84	0 Lots	0	0	0	-----	0.03	0.03	64.20
END										

LEGEND - P.V.C. CONDUITS

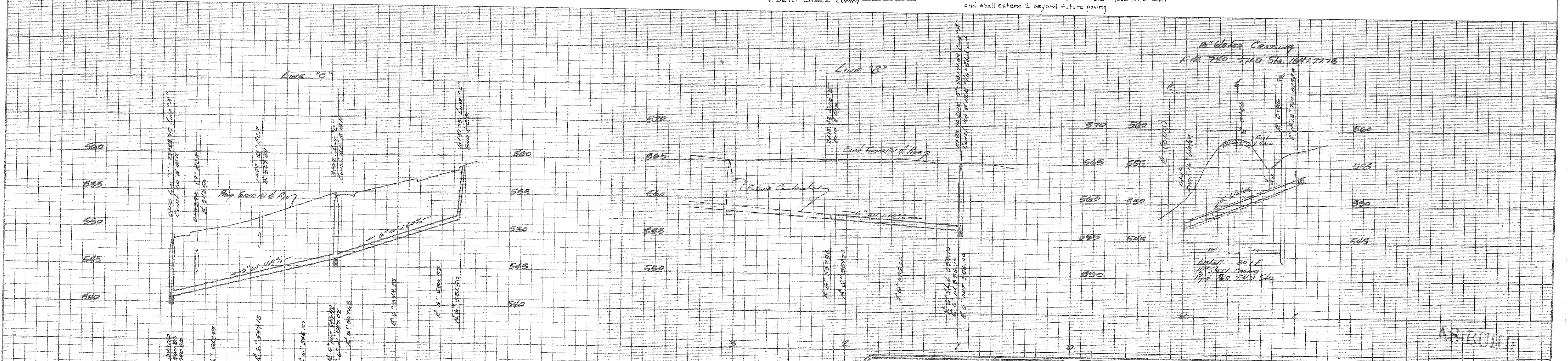
- 1. T.U. ELECTRIC
- 2. LONE STAR GAS
- 3. S.W. BELL TELEPHONE
- 4. BETA CABLE COMM

General Notes:

1. Where water pipelines either cross or otherwise come within 9 feet of a Sanitary Sewer Pipeline the sewer pipeline shall be either cast iron or PVC pipe with a minimum working pressure Class of 150 PSI.
2. It shall be the responsibility of the contractor to locate and verify all existing utilities prior to the beginning of construction to insure no conflicts between all utility lines.
3. Conduits for S.W. Bell & Beta Cable T.V. shall have 30" of cover and shall extend 2' beyond future paving.

T.U. ELECTRIC COMPANY GENERAL NOTES

1. DEVELOPER TO FURNISH AND INSTALL ALL CONDUIT AS SHOWN ON PRINT.
2. T.U. ELECTRIC CO. TO FURNISH CABLE MARKERS.
3. DEVELOPER TO INSTALL 1 (ONE) CABLE MARKER AT EACH END OF CONDUIT.
4. ALL CONDUIT TO BE SCHEDULE 40 AND MINIMUM OF 3" IN DIAMETER.
5. EACH CONDUIT MUST BE BURIED A MINIMUM OF 40" DEEP (AFTER LAND IS BROUGHT TO FINAL GRADE & EXTEND 2' BEYOND FUTURE PAVING).
6. EACH CONDUIT MUST BE INSPECTED BY THE DISTRIBUTION DEPT. BEFORE BACK FILLING IN TRENCH. ROBERT GAYLOR 487-2351
7. EACH CONDUIT MUST HAVE A PULL WIRE INSTALLED AND BE CAPPED AT BOTH ENDS.



HAROLD L. EVANS & ASSOCIATES Consulting Engineers P. O. Box 28355 2331 Gus Thomason Road, Suite 102 Dallas, Texas 75228 (214) 328-8133				UTILITY PLANS FORCHASE - PHASE ONE City of Rockwall Rockwall County, Texas		SHEET NO. 7 9
REVISION DESCRIPTION	DATE 7-7-88	SCALE 1"=00'	DESIGN H.L.E.	DRAWN L.P.	JOB NO. 87201	