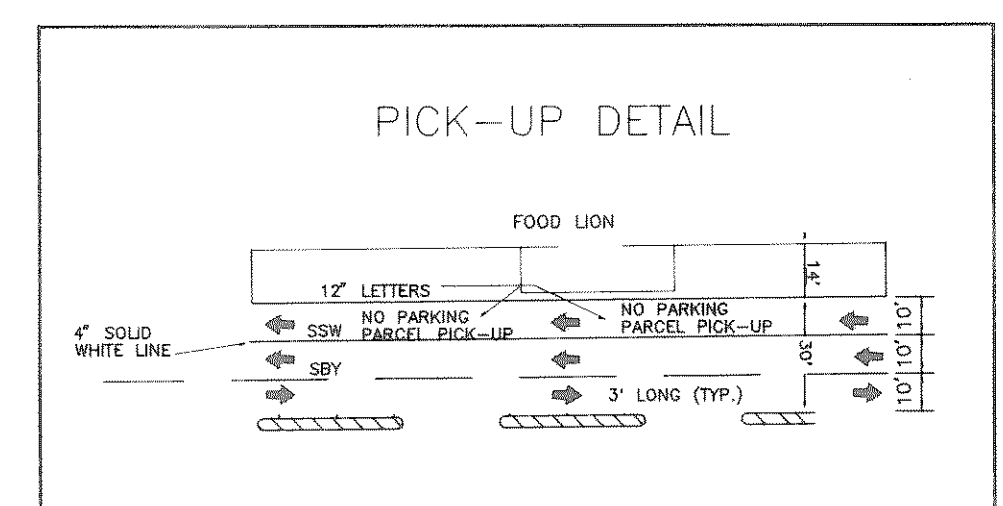
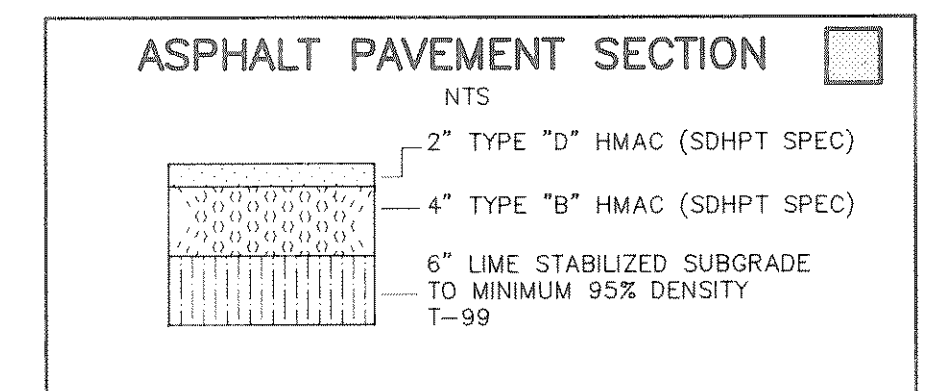
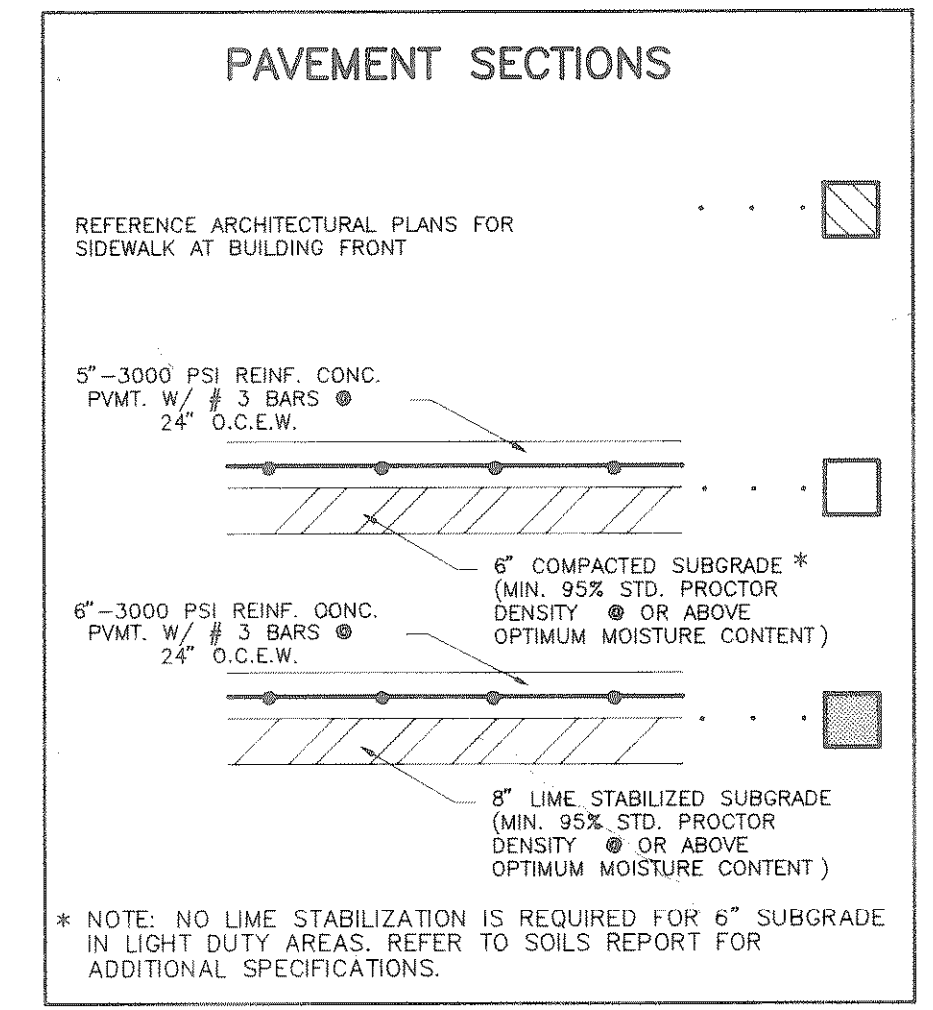
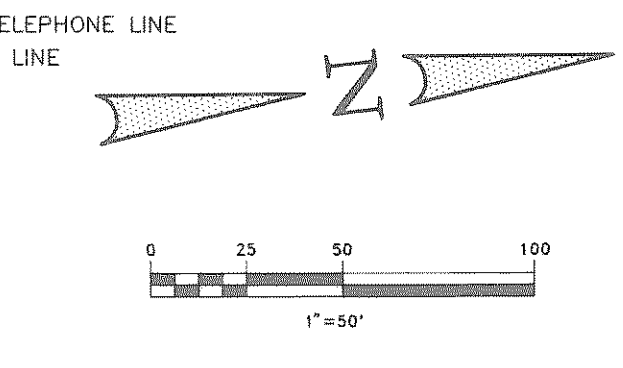
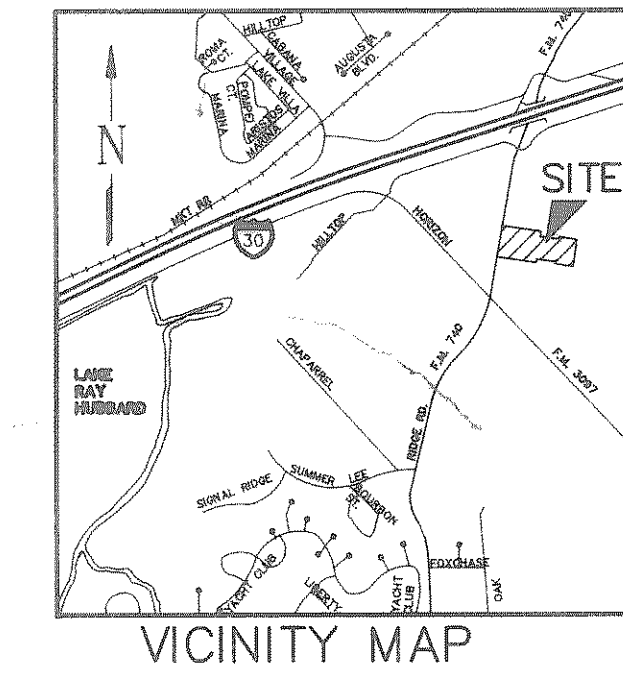
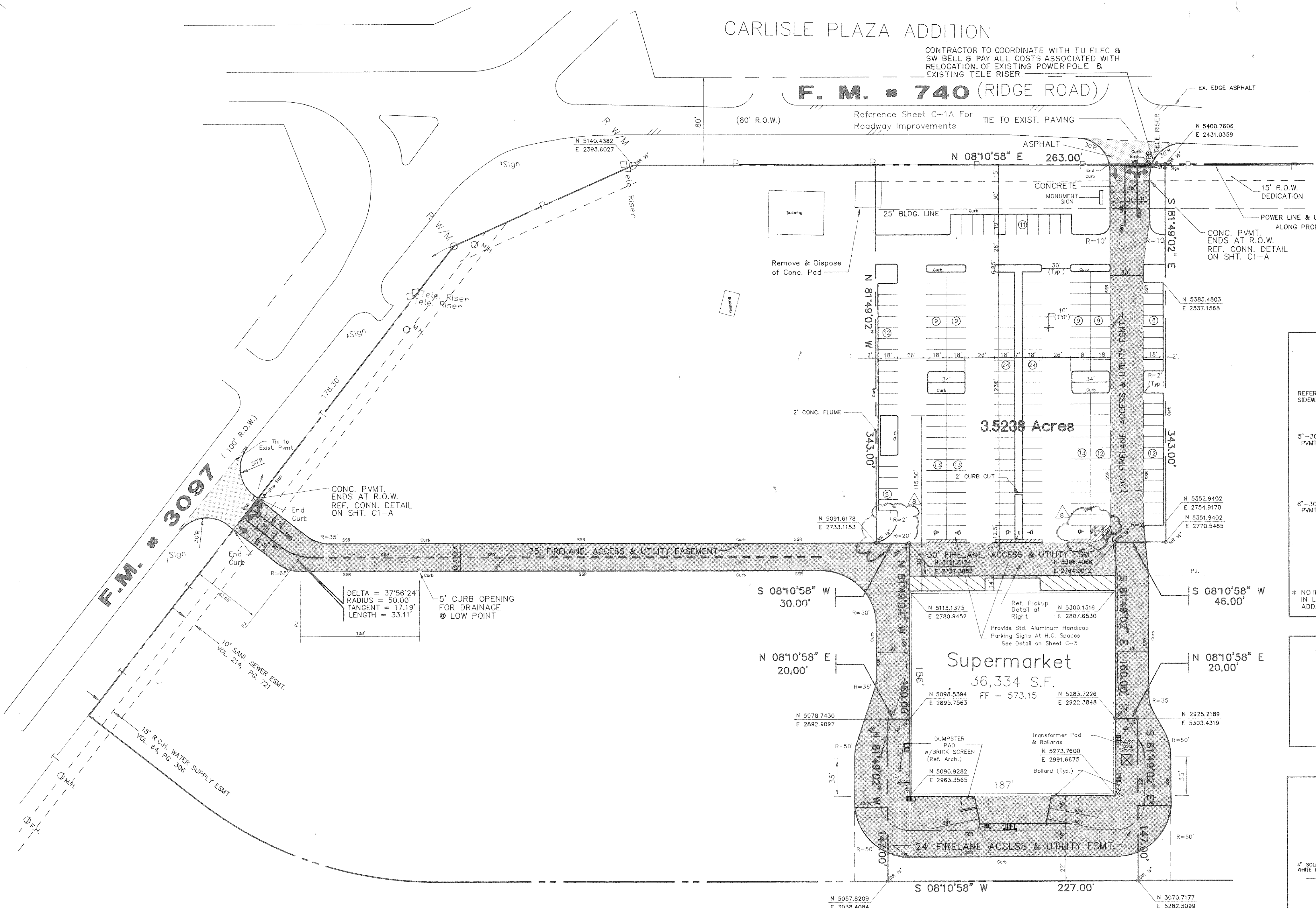


CARLISLE PLAZA ADDITION

CONTRACTOR TO COORDINATE WITH TU ELEC. & SW BELL & PAY ALL COSTS ASSOCIATED WITH RELOCATION OF EXISTING POWER POLE & EXISTING TELE RISER

F. M. # 740 (RIDGE ROAD)

Reference Sheet C-1A For Roadway Improvements



PAVING & STRIPING LEGEND

PROPERTY LINE	
CONCRETE CURB	
STORM SEWER PIPE, CATCH BASIN & MANHOLE	
6" DIA. GUARD POST (BOLLARD)	
DIRECTIONAL ARROW, PAINTED WHITE	
TRAFFIC SIGN & DESIGNATION	
CONCRETE	SEE PVM'T SECT.
PAINTED LINE (SEE STRIPING BELOW)	
STRIPING	
* SINGLE SOLID RED (SSR)	
DOUBLE SOLID YELLOW (DSY)	
SINGLE SOLID YELLOW (SSY)	
SINGLE SOLID WHITE (SSW)	
SINGLE BROKEN YELLOW (SBY)	
SINGLE BROKEN WHITE (SBW)	
WHITE STOP LINE (WSL) (24" WIDE)	
AREAS TO BE SEEDED	REF. SHT. C-8
HEAVY DUTY PAVEMENT	SEE PVM'T SECT.
LIGHT DUTY PAVEMENT	SEE PVM'T SECT.

* 6" RED BACKGROUND WITH 4" HIGH LETTERS STATING "FIRELANE, NO PARKING" TO BE PAINTED EVERY 15' ALONG STRIPE, PAINT VERTICALLY ON CURB FACE WHERE APPLICABLE.

SITE DATA

LAND AREA	3.5238 Ac (3.4358 NET)
BLDG AREA	36,344 SF
PARKING	
REQ'D	182
PROV'D	183
LANDSCAPE	
REQ'D	*18,700 SF (12.5%)
PROV'D	19,940 SF (13.3%)
BUILDING HEIGHT	27'-1"
* BASED ON 2.5% REDUCTION FOR FRONTAGE SCREENING	

BENCHMARK:
 "□" CUT ON NORTH END OF 3x2 BOX CULVERT
 @ N. E. CORNER OF F.M. 740 & F.M. 3097
 ELEV. = 568.07

- GENERAL NOTES
PARKING AND PAVING**
- ALL SIGNS, PAVEMENT MARKINGS, AND OTHER TRAFFIC CONTROL DEVICES SHALL CONFORM TO THE MANUAL ON UNIFORM TRAFFIC CONTROL DEVICES.
 - ALL PAVEMENT MARKINGS SHALL BE FOUR (4) INCHES WIDE UNLESS INDICATED OTHERWISE ON THE DRAWINGS.
 - A MINIMUM CLEARANCE OF TWO (2) FEET SHALL BE MAINTAINED BETWEEN THE FACE OF CURB AND ANY PART OF A TRAFFIC SIGN.
 - ALL DIMENSIONS ARE TO FACE OF CURB UNLESS INDICATED OTHERWISE.
 - CONTRACTOR SHALL FURNISH AND INSTALL ALL PAVEMENT MARKINGS AS SHOWN ON THE PLANS.
 - CONTRACTOR SHALL COORDINATE INSTALLATION OF ALL SIGNS, PAVEMENT MARKINGS, AND OTHER TRAFFIC CONTROL DEVICES WITH OTHER CONTRACTORS ON THE SITE.
 - NOTIFY CITY INSPECTOR 24 HOURS BEFORE WORK BEGINS WITHIN CITY RIGHT-OF-WAY.
 - JOINTS OR SCORE MARKS ARE TO BE SHARP AND CLEAN WITHOUT SHOWING EDGES OF JOINTING TOOL.
 - ALL CONCRETE SHALL BE CLASS A 3000 P.S.I.
 - ALL CURB SHALL BE INTEGRAL WITH CONCRETE PAVEMENT.
 - INTEGRAL CONCRETE CURB SHALL BE OF THE SAME COMPRESSIVE STRENGTH AS THE CONCRETE PAVEMENT.
 - ALL CONCRETE PAVING IS TO BE REINFORCED WITH #3 BARS AT 24" CENTERS EACH WAY. CHAIRS OR BOLSTERS WILL BE REQUIRED TO PLACE REINFORCEMENT IN THE PROPER LOCATION AT THE CENTER SLAB.

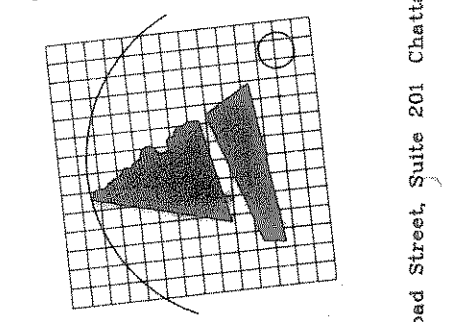
- CONTRACTOR SHALL SAW-CUT TIE-INS AT EXISTING CURBS AS NECESSARY TO INSURE SMOOTH TRANSITIONS. CONTRACTOR SHALL SAW-CUT AND TRANSITION TO MEET EXISTING PAVEMENT AS NECESSARY AND AS DIRECTED BY CITY INSPECTOR TO INSURE POSITIVE DRAINAGE. (TYP. ALL INTERSECTIONS)
- PROVIDE LONGITUDINAL AND TRANSVERSE CONTRACTION JOINTS AT 12' MAXIMUM EACH WAY. CONTRACTION JOINTS SHALL BE 1/4" X 1/3 DEPTH OF PAVEMENT AND MAY BE SAWED OR FORMED. REINFORCEMENT SHALL BE CONTINUOUS THROUGH CONTRACTION JOINTS. JOINTS SHALL BE CONTINUOUS THROUGH CURBS. SAWCUTTING, IF USED, SHALL BE COMPLETED BEFORE 8 HOURS HAVE ELAPSED SINCE CONCRETE PLACEMENT. JOINTS SHALL BE SEALED FOLLOWING SAWCUTTING.
- PROVIDE 3/4" EXPANSION JOINTS TO ISOLATE ALL FIXED OBJECTS ABUTTING OR WITHIN THE PAVING SUCH AS BUILDINGS, EXISTING PAVEMENT, UTILITY APPURTENANCES, POLE BASES, AND SIDEWALKS. DO NOT PERMIT REINFORCEMENT TO EXTEND CONTINUOUSLY THROUGH ANY EXPANSION JOINT. FILL JOINTS TO FULL DEPTH WITH EXPANSION JOINT MATERIAL (REDWOOD OR BITUMINOUS MATERIAL). IN CURBS, LOCATE JOINTS AT THE BEGINNING AND END OF CURVES. IN CURBS AND PAVING, DEPRESS 3/4" JOINT MATERIAL BELOW FINISHED GRADE AND SEAL EXPOSED JOINTS WITH JOINT SEALER.
- PAVING EXPANSION JOINTS ARE TO BE LOCATED AT A MAXIMUM OF 100 FEET ON CENTERS EACH WAY AND AT ALL CONSTRUCTION JOINT LOCATIONS. NO KEYWAYS ARE PERMITTED.
- HANDICAP RAMPS ARE TO BE CONSTRUCTED AT ALL DRIVEWAY INTERSECTIONS IN ACCORDANCE WITH CITY OF ROCKWALL CRITERIA CONSTRUCTION DETAILS
- CONTRACTOR SHALL BEAR ALL RESPONSIBILITY FOR OBTAINING ALL PERMITS REQUIRED BY THE CITY OF ROCKWALL, & PAYING ALL FEES ASSOCIATED WITH SAID PERMITS

Winkelmann & Associates, Inc. hereby certifies that this plan, to the best of our knowledge is "AS BUILT". All modifications from the originally approved construction documents have been made as per information provided by the contractor. Winkelmann & Associates, Inc. does not certify as to the correctness or quality of construction as no field inspection was performed.

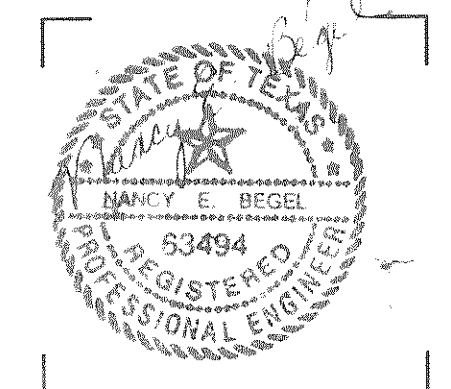
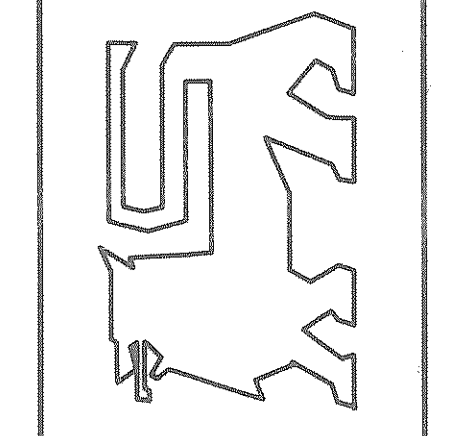
[Signature] 1-9-92
 WINKELMANN & ASSOCIATES, INC. DATE

Winkelmann & Associates, Inc.
 CONSULTING CIVIL ENGINEERS & SURVEYORS
 12800 Hillview Road, Suite 200
 Dallas, Texas 75250
 (214) 486-7999
 (214) 486-1025 FAX

ARTECH DESIGN GROUP INC.



FOOD LION, INC. SITE #50a
 F.M. 740 @ F.M. 3097
 Rockwall County
 Rockwall, Texas



JOB NO.	06416.01
DATE	4-1-91
DRAWN	A.J.L./A.L.C.
CHK.	N.E.B.
DISC.	6416C-1.DWG
SHEET	C-1
OF	
PARKING & PAVING PLAN	

2825 Broad Street, Suite 201, Chattanooga, TN 37409 615/266-4313 Fax 615/266-5413