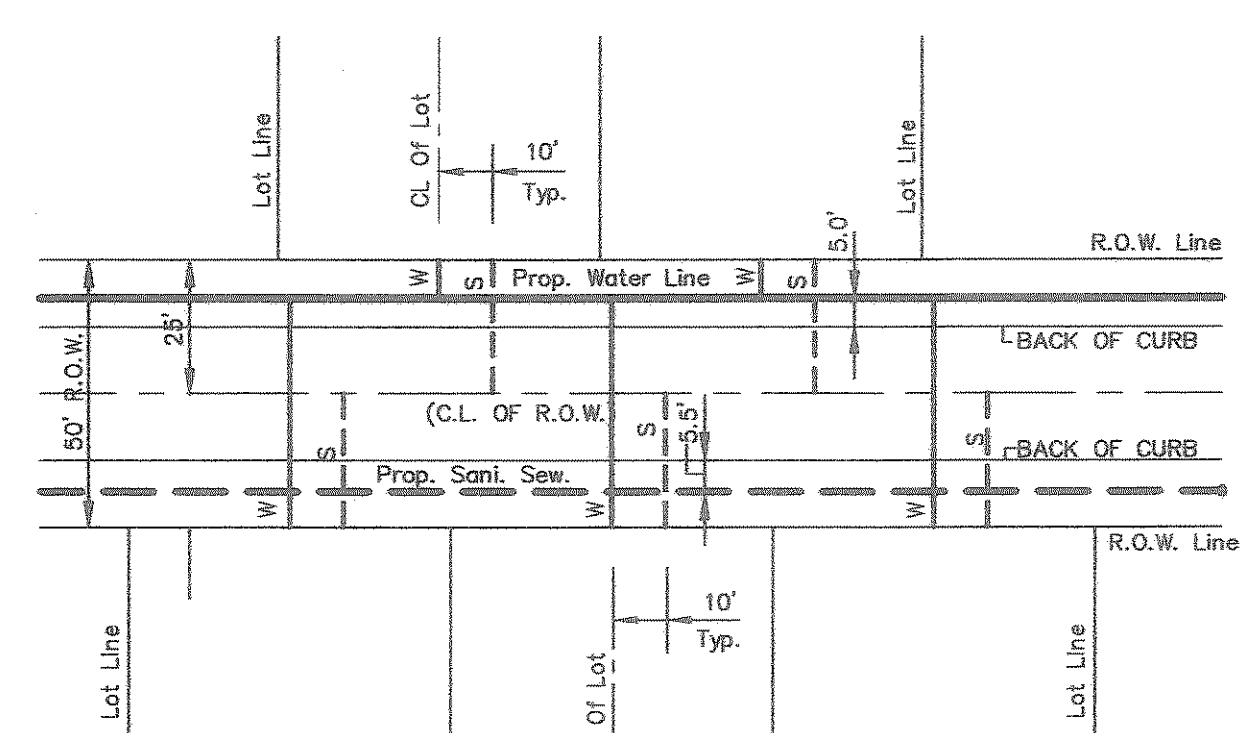


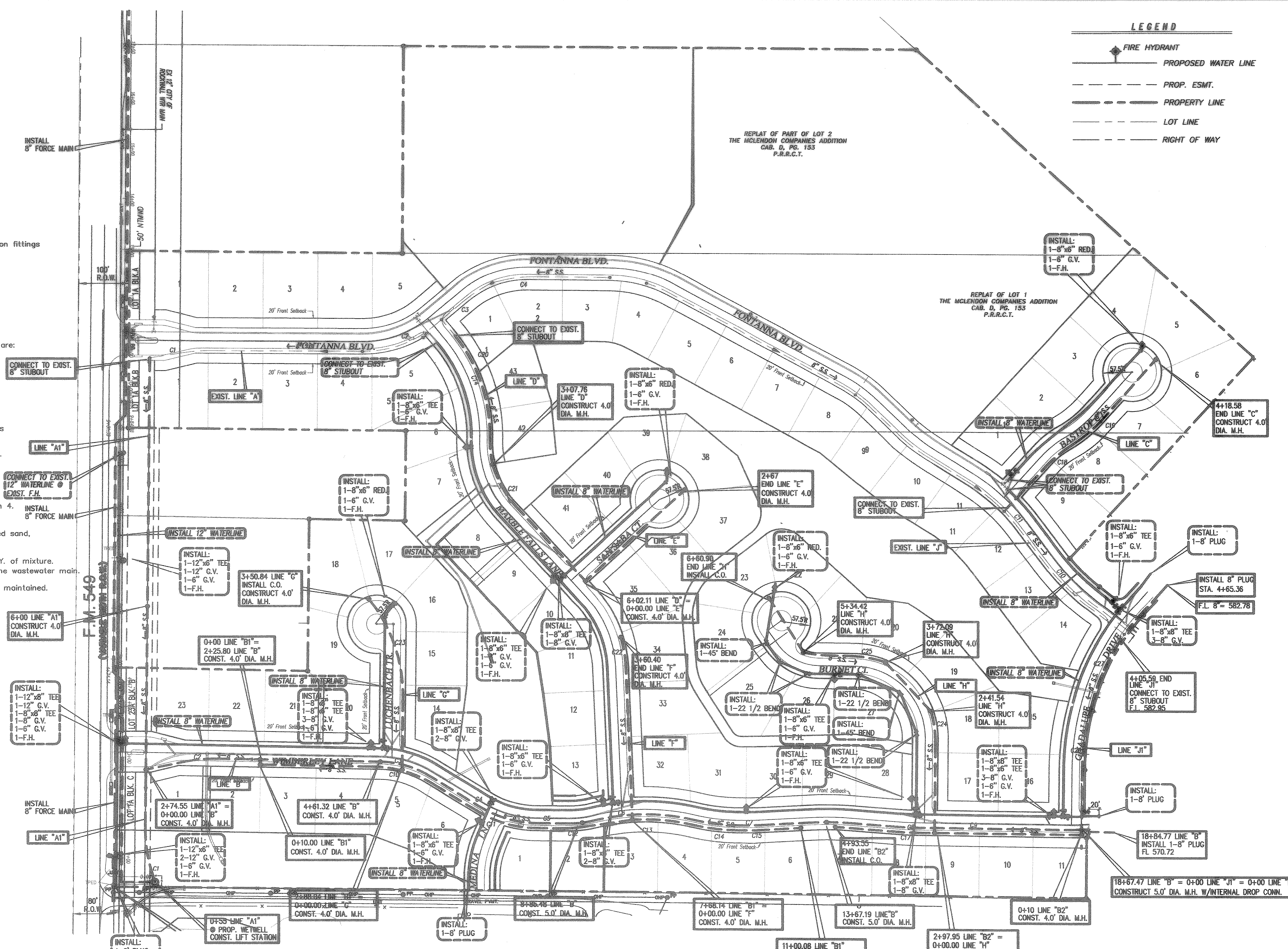
Water and Sanitary Sewer General Notes:

- Water mains shall be AWWA C-900 PVC Class 200 unless otherwise noted. Minimum cover for waterlines is 48" or as required to clear existing utilities, whichever is greater.
- Marking tape shall be installed over PVC water lines and above sanitary sewer lines and locator discs above the termination of the service connection.
- Fittings for PVC water lines shall be fully body fittings and mega lugs on all MJ ductile iron fittings and be encased in a polyethylene sheath.
- Valves shall be resilient seat gate valves.
- All direct burial valves shall be provided with cast iron valve boxes with PVC stacks. Valve stacks shall be vertical and concentric with the valve stem. Stainless steel valve extensions are required on all valves where the operating nut is greater than 4 feet below finished grade.
- Fire hydrants shall be field painted per City of Rockwall specifications.
- All exposed bolting on any buried equipment or material shall be stainless steel. Included are:
 - Bonnet and stuffing box bolts on valves.
 - Shoe bolts on fire hydrants.
 - Flange bolts.
- Meter boxes shall be as approved by the City of Rockwall.
- Sanitary sewer mains shall be SDR 35 PVC.
- The contractor shall install and maintain water tight plugs in all connections to the City's sanitary sewer system until the project is accepted by the City.
- All sanitary sewer lines and manholes shall be leak tested before the project is accepted. Deflection testing of PVC sewer lines is required.
- All embedment will be in accordance with the City of Rockwall standards.
- All water main & sewer crossings shall be made in accordance with TCEQ regulation Chapter 290 Subchapter D Rule 290.44 (e) 1 through 4.
- Where water main & sewer cross, contractor shall center sanitary sewer pipe joint at the centerline of the proposed waterline, and install 20 linear feet of cement stabilized sand, 10' feet each side of centerline.
- Cement stabilized sand embedment shall have a minimum of 2.5 bags of cement per C.Y. of mixture. Cement stabilized sand shall be a minimum of six inches above and four inches below the wastewater main.
- Minimum radius for 8" water line shall be 300'. Use bends as required if radius can't be maintained.
- Minimum radius for 8" sanitary sewer shall be 300'.



- All water services to be installed in the center of each lot.
- All sanitary sewer laterals will be 4" and installed 10' downstream of each water service.

Typical Water & Sewer Detail
N.T.S.



Sanitary Sewer Curve Table - Line "A1"

Curve No.	P.C.	P.T.	Δ	Radius	Tangent	Length
C1	0+65.48	1+65.19	19'02"38"	300	50.32'	99.71'

Sanitary Sewer Curve Table - Line "B"

Curve No.	P.C.	P.T.	Δ	Radius	Tangent	Length
C2	0+76.64	1+43.21	12'42"50"	300.00'	33.42'	66.57'
C3	3+61.32	4+62.55	30'31"35"	190.00'	51.85'	101.23'
C4	6+81.48	7+95.23	31'02"11"	210.00'	58.31'	113.75'
C5	8+80.53	9+07.98	14'41"41"	185.00'	23.85'	47.45'
C6	9+07.98	11+06.53	27'24"43"	415.00'	101.21'	198.55'
C7	11+06.53	11+91.98	12'43"02"	385.00'	42.90'	85.45'
C8	13+36.65	14+15.01	07'36"34"	590.00'	39.24'	78.36'
C9	15+05.58	15+46.69	03'51"41"	610.00'	20.56'	41.11'

Sanitary Sewer Curve Table - Line "B1"

Curve No.	P.C.	P.T.	Δ	Radius	Tangent	Length
C10	2+22.82	3+42.70	30'31"35"	225.00'	61.40'	119.88'
C11	4+48.34	5+68.51	31'02"11"	220.00'	61.09'	119.17'
C12	6+22.72	6+58.38	09'04"51"	225.00'	17.87'	35.66'
C13	7+58.14	8+77.34	16'51"44"	405.00'	60.03'	119.19'
C14	8+77.34	9+65.01	12'43"02"	395.00'	44.02'	87.67'
C15	9+65.01	10+14.62	04'19"35"	656.97'	24.82'	49.61'

Sanitary Sewer Curve Table - Line "B2"

Curve No.	P.C.	P.T.	Δ	Radius	Tangent	Length
C17	3+20.73	3+62.52	03'51"41"	620.00'	20.90'	41.76'

Sanitary Sewer Curve Table - Line "C"

Curve No.	P.C.	P.T.	Δ	Radius	Tangent	Length
C18	1+21.04	1+79.61	13'25"22"	250.00'	29.42'	58.57'
C19	2+02.17	2+66.39	14'43'01"	250.00'	32.29'	64.22'

Sanitary Sewer Curve Table - Line "D"

Curve No.	P.C.	P.T.	Δ	Radius	Tangent	Length
C20	0+00	2+18.23	33'24"35"	318.00'	95.43'	218.23'
C21	2+18.23	3+70.15	38'40'23"	225.00'	78.96'	151.87'

Sanitary Sewer Curve Table - Line "G"

Curve No.	P.C.	P.T.	Δ	Radius	Tangent	Length
C23	1+43.84	3+35.02	36'30'47"	300.00'	98.96'	191.18'

Sanitary Sewer Curve Table - Line "H"

Curve No.	P.C.	P.T.	Δ	Radius	Tangent	Length
C24	1+75.92	2+41.54	16'31'14"	227.56'	33.04'	65.62'
C25	3+71.92	4+33.79	15'45'18"	225.00'	31.13'	61.87'

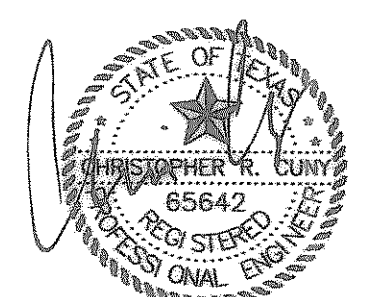
Sanitary Sewer Curve Table - Line "I"

Curve No.	P.C.	P.T.	Δ	Radius	Tangent	Length
C26	1+28.05	2+50.02	14'23'31"	480.00'	60.60'	120.57'
C27	2+50.02	4+11.32	21'29'32"	430.00'	81.61'	161.30'

Sanitary Sewer Curve Table - Line "J"

Curve No.	P.C.	P.T.	Δ	Radius	Tangent	Length
C28	1+28.05	2+50.02	14'23'31"	480.00'	60.60'	120.57'
C29	2+50.02	4+11.32	21'29'32"	430.00'	81.61'	161.30'

THE SEAL APPEARING ON THIS DOCUMENT WAS AUTHORIZED BY CHRISTOPHER R. CUNY, P.E. 65642



Construction Record Drawing
8-22-2007

Water & Sanitary Sewer
Fontanna Ranch
City of Rockwall, Rockwall County, Texas
Spring Haven Investments, Inc.
6750 Hillcrest Plaza Dr. • Suite 305 • Dallas, Texas 75230 • 972.386.3333

F.C. CUNY CORPORATION
#2 Horizon Court • Heath, Texas 75032 • 469-402-7700

Drawn By:	Checked By:	Date:	Scale:	Project No.:	Sheet No.:
MSC	DJM	10/16/06	1" = 100'	05-013	30 of 45

Z:\Projects\Resident\Fontanna\Record Drawings\Font-wsrev1500.dwg Fr1 Aug 24 13:20:46 2007