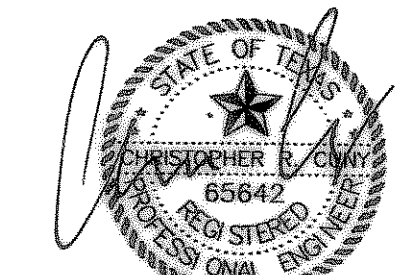
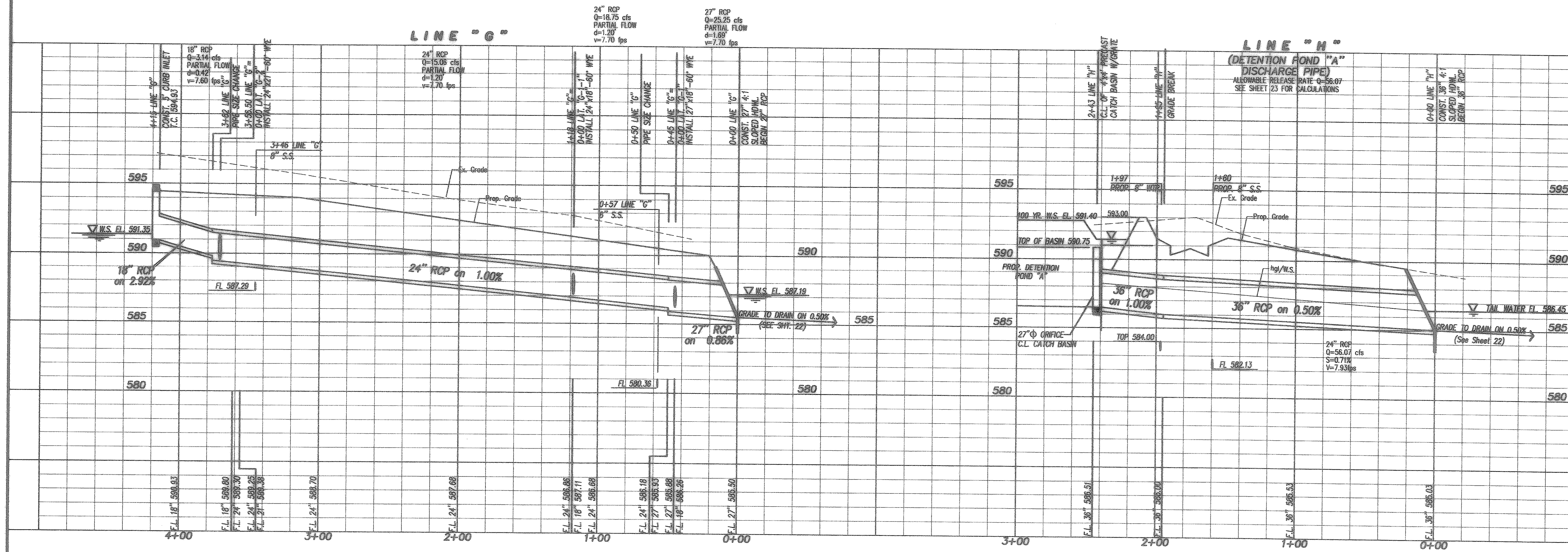


THE SEAL APPEARING ON THIS DOCUMENT WAS AUTHORIZED BY CHRISTOPHER R. CUNY, P.E. 65642



6-22-2007



Construction Record Drawing
8-22-2007

Storm Sewer Plan & Profile - Lines "G" & "H"

Fontanna Ranch
City of Rockwall, Rockwall County, Texas
Spring Haven Investments, Inc.
6750 Hillcrest Plaza Dr. • Suite 305 • Dallas, Texas 75220 • 972.386.3333

F.C. CUNY CORPORATION
#2 Horizon Court • Heath, Texas 75032 • 469-402-7700

Drawn By:	Checked By:	Date:	Scale:	Project No.:	Sheet No.:
MSC	DW	10/18/06	H:1"=40' V:1"=4'	05-013	28 of 45